

*If you are a professional . . .*

*then you have been thinking of expanding your business  
in the custom lawn and grounds spraying service.*

See for yourself how you can obtain unequalled results professionally. Sell and service with confidence using proven, simple techniques along with completely new, non-competitive products that really bring in extremely high profits. To top it off the results bring repeated orders and referrals. These services are required for beauty and healthy plant growth bringing top dollar and highest return on your investment.

These new techniques and products are available to dealers and distributors now, for the next season. Because of the tremendous success of dealers and distributors already engaged in these new techniques and products, a terrific demand has resulted from others throughout the U.S.A. Therefore, dealerships and distributorships will be offered on a first-come, first-served basis.

### SNEAK Preview

You must see for yourself these new processes and products in action. Don't buy anything until you see first hand this complete professional approach.

You are invited to attend FREE of charge, a SNEAK Preview of this totally new selling concept that out-performs all other techniques and products.

**The Place — Skokie, Illinois — North Shore Hilton**

**The Time — November 27, 1973, 9:00 a.m. - 3:30 p.m.  
and December 11, 1973, 9:00 a.m. - 3:30 p.m.**

The last time we made this offer, we could not accommodate all interested parties. Therefore, we hope that we will hear from you before October 30, 1973.

By that time, we will know the number of people to be attending and will try to accommodate all. Please send in your reservation now. No Charge for the SNEAK Preview Course or for the meals.

**NOTE:** Due to the high demand for these clinics, you are urged to reserve your seat early. Seats will be reserved on a first come-first serve basis.

#### I AM INTERESTED IN ATTENDING

— Please send me more information and exact dates and places that these Clinics will be conducted.

— Please reserve \_\_\_\_\_ seats for me.

NAME/FIRM NAME \_\_\_\_\_

ADDRESS \_\_\_\_\_

CITY \_\_\_\_\_ STATE \_\_\_\_\_

PHONE \_\_\_\_\_ AREA CODE \_\_\_\_\_

#### CONSULTING AGRONOMISTS

6677 N. Lincoln Ave.

Lincolnwood, Ill. 60645

312/673-7500

#### Technical Preview Training:

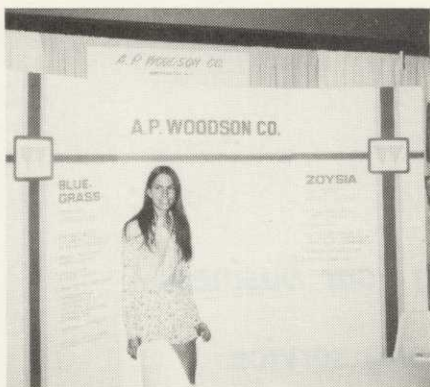
- a. soil problems and solutions
- b. maintenance problems (products and labor)
- c. weed control (lawn, grounds, lakes and streams, ornamentals, hedges and shrubs, soil sterilization).
- d. sales techniques
- e. demonstration and application techniques
- f. selling products
- g. selling services



#### CONSULTING AGRONOMISTS

6677 N. Lincoln Ave.  
Lincolnwood, Ill. 60645  
312/673-7500





**WEEDS:** Cathy Stadelhofer, A. P. Woodson, Co. helps people with turfgrass weed problems.



**TREES:** Chuck Cissel (l) and Walt Money (c) discuss tree care with Elwin Deale, U. of Md. and Francis Lay, Arlington county, Va.



**AND TURF:** Bill Robinson (l) extension entomologist, VPI, and Ashton Ritchie, agronomist, National Turf Service, Inc. were ready with the answers to turf-grass questions.

## Tyson's Corner "Happening" Draws 120,000 Visitors

About 120,000 people passed by 34 displays of the Metropolitan Horticultural Happening at Tyson's Corner international shopping center in McLean, Va. during one day in early August.

What they viewed were commercial exhibits from any segments of the "Green Industry." Tree care firms, nurseries, lawn care businesses and general horticultural displays attracted and kept the attention of passerbys throughout the

day. Of particular interest were the educational booths set up by various groups including the United States Department of Agriculture (USDA), the University of Maryland, Potomac Rose Society and others.

One favorite was the "sick plant clinic" manned by the county agricultural extension agents of the Maryland and Virginia counties surrounding and including Washington, D. C.

The Metropolitan Horticulture Happening was the result of a team effort spearheaded by Francis Lay,

Arlington county extension agent. The event was designed to bring a great variety of garden oriented information to a public that has been keenly aware of their role in improving their home environments.

Among the exhibitors for the day was Guardian Tree Experts, Inc., of Rockville, Md. "The interest expressed by the people who came past the exhibits was phenomenal," said Walt Money, president of Guardian Tree Experts. "We selected an enclosed all-weather shopping mall for the 'happening' most of the people came from northern Virginia.

## An Asplundh Chipper makes you more money than you bargained for.

Drop us a note for more detailed literature and specifications. Asplundh Chipper Company  
50 E. Hamilton Street, Chalfont, Pa. 18914

**ASPLUNDH**





# the Hahn Tournament "greensmower." (a great understatement)

Since Hahn revolutionized greens maintenance with the Tournament Triplex System, so much has been written and said about its versatility—fast interchangeable Verti-Cut heads, spikers and utility mowers—we've been guilty of understating the beautiful way it cuts greens.

What makes the Tournament Triplex so beautiful a greensmower are features like: Individual lifts for each of the heads to make perimeter tracking a problem of the past • Reel speeds independent of ground speed to insure a higher rate of clip • Cable driven heads that

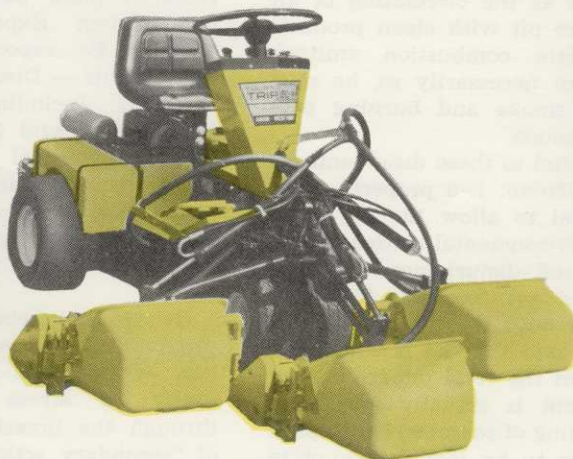
eliminate high-pressure hydraulic leak dangers • Proper weight distribution to give traction up and down the steepest slopes, even while pulling a dump cart • Good visibility of up-front reels to eliminate "guessing mistakes." And much, much more.

Contact your Hahn distributor for a demonstration. There are two models: the Tournament Deluxe with speedometer and tachometer . . . and the economical Tournament II. Both use the same interchangeable heads; both pay for themselves in time and labor within a year.

## Hahn

TURF PRODUCTS

Turf Products • Outdoor Products  
Agricultural Products  
The 3 growing divisions of HAHN, INC.  
1625 N. Garvin St., Evansville, Indiana 47717  
*world-wide distribution*







ISTC officers for 1973-74 are: (l-r standing) L. C. Chadwick, exec. director emeritus; E. B. Himelick, exec. director; Dan Neely, editor; Cal Bundy, exec. secretary; (l-r seated) John Z. Duling, president-elect; F. L. Dinsmore, president; ohn Weidhaas, Jr. past president; and Jack R. Rogers, vice president.

## ISTC REPORT

(from page 27)

transmission lines will be constructed on 1½ million acres of right-of-way each decade for the balance of this century," he said.

He appealed for proper route selection and accepted procedures on rights-of-way clearing to make transmission lines more compatible with the environment. He also suggested that general practices such as vegetation screens and utility access roads be adapted nationwide.

Panel moderator, Richard E. Abbott, supervisor right-of-way maintenance, Ohio Power, Canton, Ohio then called on Robert D. Palmer, Dayton Power & Light, Dayton, Ohio to discuss the air curtain destructor. Palmer described the brush destructor as the circulating of air over a fire pit with clean products of complete combustion emitted. This is not necessarily so, he said. There is smoke and burning particle emissions.

He pointed to these disadvantages of the machine: 1. a property owner's refusal to allow the pit to be dug; 2. environmental consequences, meaning soil disturbance, soil condition and pit location; 3. safety hazards, should the pit cave in.

Palmer said that he is convinced that "when the total impact on the environment is actually measured, open burning of seasoned brush piles will prove to be less damaging to the environment and future ecology of the immediate area than the operation of an air curtain incinerator."

During the morning session of the municipal arboriculturists, Jack Rogers, superintendent of street trees, City of Los Angeles, discussed the topic "Should We Plant Trees Along Our City Streets?" Rogers said no. Trees planted along standard streets are a hold-over from the days of the horse. With today's number of vehicles, people and services all competing for the street and the adjacent tree lawn, the tree is at a decided disadvantage. It has little chance of survival.

Rogers proposed that tree planting easements be secured, the same as those used by utility and sewer companies. "This will place the tree outside the roadway and some distance from the conflicting elements," he said.

In the session of commercial arboriculture, Dr. David R. Houston, research plant pathologist, Northeast Forest Experiment Station, Hamden, Pa., reported on "Dieback and Decline — Diseases Initiated By Stresses, Including Defoliation." Dr. Houston said that stress refers to environmental pressure which brings about changes in a tree's physiology, form, or structure and predispose it to invasion by organisms which a tree normally can resist.

He said that dieback-decline was a progressive disease condition begun when trees are altered initially by stress and continued through the invasion of organisms of "secondary action." Examples of dieback were reported in ash, beech bark, and defoliation initiating decline in sugar maple and oak.

Dr. Houston said that ecological relationships are playing a bigger role in tree decline. Where areas have been defoliated by gypsy moth year after year, the incidence of decline is greater than elsewhere, he said.

He concluded his remarks by saying that "the incidence and severity of the dieback-decline disease will continue to increase as the number and diversity of stress factors increase with our expanding urbanizing society."

New officers for 1973-74 year are: F. Lewis Dinsmore, Dinsmore Tree Service, St. Louis, Mo., president; John Z. Duling, Duling Tree Expert Company, Muncie, Ind., president-elect; Jack R. Rogers, superintendent of Street Trees, City of Los Angeles, Pasadena, Calif., vice-president.

Awards presented at the annual banquet on the last evening of the convention included: Award of Merit, Keith L. Davey, Belmont, Calif.; H. N. Engledow, Indianapolis, Ind.; and Albert W. Meserve, Danbury, Conn. Honorary Membership, Dr. Samuel Ayres Jr. M. D., Los Angeles, Calif. Honorary Life Membership, Henry Vaughn-Eames, Stockton, New Jersey; C. Elmer Lee, Rosemead, Calif.; and Philip L. Rusden, Greenwich, Conn.

Next year's convention dates are Aug. 18-22. This will be the golden anniversary of ISTC. The 50 year celebration will be held at the Marriott Motor Inn, Atlanta, Ga.

## Oregon Seed Trade Assn. Grants \$3500 In Scholarships

The Oregon Seed Trade Association made scholarship grants to Oregon State University and Linn Benton Community College totalling \$3,500.

Firms assisting in the grants are Berger Plate, Derry Warehouse, Western Seed, International Seeds, Jenks-White Seed Co., Mid-Valley Agricultural Products, Normarc, Northrup-King, Lee Olsen, Pacific Supply Coop, Pickseed West, and Wm. K. Wiley Co.

Chairman Lee Olsen announced the grants. Serving on his committee were Russell Stark, Richard Bailey, and James Carnes. Recipients were Ronald Cook, Canby; Cathy Arms, Rickreall; James Van Leeuwen, Halsey; Mark Dickman, Silverton; John Flanagan, Junction City; Lyman Lacy, Tangent, and Charles Gregory, Lebanon.



# HELP AVAILABLE

**to plan and budget your 1974  
grounds maintenance improvements.**

As you prepare your budget for next year's grounds maintenance—seeking better results without inflationary labor cost—possibly we can help.

Berkeley has great capability in this area. First, as a full-line manufacturer of every type of pump used in water systems and sprinkler irrigation, and with experience gained over nearly four decades. Also with a dealer organization in most urban, suburban and rural areas of North America. Plus a factory branch and warehouse system geared to urgent demands both for original equipment and spare parts.

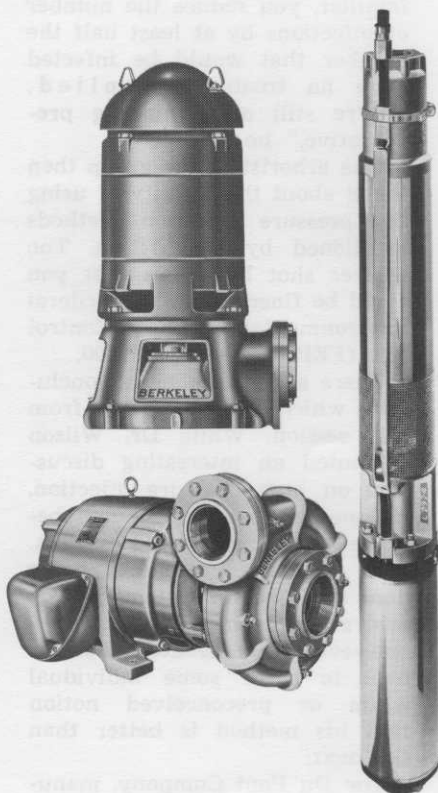
But most of all, because basically we are hydraulic engineers. Thus we tend to load our dealers with all the information they need to advise people in your position on designing a system adequate for present and projected requirements. Sound information so a system is never overbuilt or underbuilt.

As a convenience, the names of our dealers are listed in the Yellow Pages of hundreds of telephone directories. If you don't find one locally, please call us. We will help you with your plans and budget one way or another.

## **BERKELEY PUMP COMPANY**

P.O. Box 2007, Berkeley, California 94702 • 415/843-9400  
556 Tift Avenue, S.W., Atlanta, Georgia 30310 • 404/522-5387

*BRANCHES IN Amarillo, Tex.; Grand Island, Neb.; Dallas, Tex.; Portland, Ore.; Phoenix, Ariz.; Commerce City, Colo.; Cherry Hill, N.J.; Tampa, Fla.; Joplin, Mo.; St. Louis, Mo.; Minneapolis, Minn.; Ajax, Ontario, Canada.*





## NEWS AND OPINION

(from page 25)

said. "We haven't had good solid data to show how it works."

It would seem that his conclusions on high pressure injection are not founded on a broad base of data, but rather on limited research as conducted with available research grants.

Dr. Wilson then named several systems which have been experimentally tried in the U.S. and Canada. They are:

**Davey System:** He pointed out that it has a flow meter which is good from the point that the applicator doesn't have to measure the amount of material actually taken up by the tree.

**The Stoneville, Miss. system.** It uses old freon bottles.

**SIReservoir system.**

The plant pathologist mentioned the Mauget injector as another system and said that "this is the only one that is labelled and can be used." He said it makes use of Benlate fungicide as a wettable powder (the only formulation available from the manufacturer) which settles out. He then showed a slide taken at close range of the Mauget cup which showed Benlate residue in the bottom. He inferred that this was a negative attribute to this gravity flow system. However, as most plant pathologists know, only a very small amount of the material (less than 3 parts per million) is needed to control the disease. Residue in the bottom of the cup may be more a visual problem than one of no chemical uptake.

At the conclusion of his talk, delegates asked many questions. One was, what research has been done on tree wounds caused by high pressure injection. Wilson said that there is a lot of callus growth around the holes. There have been some reports of burning around the point of injection, he said, particularly when Benlate was solubilized with lactic acid. Wilson reasoned that the fact that you are using a fungicide should give some disease control of other diseases that would cause rot in the area near the hole. This would probably be true if Benlate had activity against these diseases. Wilson gave no answer about those diseases not controlled by the systemic fungicide.

Another question asked was about the solubility of the benomyl molecule. Eugene B. Himelick, ISTC executive director, answered it saying that it was 10 ppm soluble. He was immediately corrected by Dr. T. C. Ryker who pointed out that Benlate is soluble at one-to-two parts per million.

One delegate then asked for a show of hands of arborists in the room who had used Benlate and were satisfied with the results. Roughly 80 people raised their hands indicating satisfaction with the product.

Dr. Wilson was asked by an ISTC member whether anyone had compiled the results of research conducted by various institutions into a central file. Wilson stated that research will continue to be done at various locations. The gentleman then said that shouldn't it be the responsibility of the government to collect the information? Wilson said that research was continuing at various locations to find out what could best be done to make a definite recommendation.

Dr. Arthur Costonas of Lowden, Inc. then discussed the antibiotic Nyastatin which Lowden has been developing for the control of DED. He said it offered interesting possibilities into the control of the disease, but hesitated to comment much further than that. It would seem that the audience was left somewhat in the dark about exactly what the product was and exactly how it controlled the disease.

Dr. T. C. Ryker, who recently retired from the Du Pont Company, next discussed foliar applications of benomyl for DED control. He said that the basis for the label of Benlate benomyl (foliar application) was due to data submitted. This data came from Wisconsin. "You get registration where you have data," he said. Dr. Ryker said that in the tests with which he was familiar, you reduce the number of infections by at least half the number that would be infected were no treatment applied. "We're still only thinking preventative," he said.

One arborist in the group then asked about the legality of using the pressure injection methods mentioned by Dr. Wilson. The answer shot back was that you could be fined under the Federal Environmental Pesticide Control Act (FEPCA) up to \$25,000.

There are a number of conclusions which could be drawn from this session. While Dr. Wilson presented an interesting discussion on high pressure injection, no one can use this method because it is not registered by EPA.

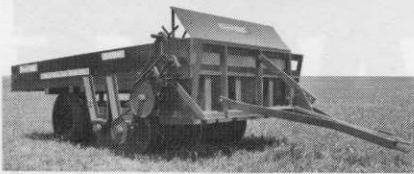
In addition, research being done on injection systems has no central gathering point. Everyone seems to be headed off on his own to solve some individual whim or preconceived notion that his method is better than the next.

The Du Pont Company, manufacturer of the chemical Benlate,

### The Big Red Line

## bermuda king

The World's First Completely Automatic Sprig Planters And Harvesters All One-Man Operation



### New "Fairway Special" SPRIG PLANTER

With 2" Row Spacing

Designed Especially for Golf Course Fairway Planting

The Fairway Special lays down a carpet of Bermuda sprigs, up to 100 bu. per acre. 36 large planter wheels insert sprigs to desired depth on 2" row spacing. Available in 2-4-6-8 and 10-ft. widths.

### The Big Red Line of Harvesters

#### New 42" Sprig Harvester with Elevator

6 Models to Choose From: 42", 28", 20"



Designed especially for Custom operators. Digs, loads and cuts to planting length 1000-1200 bu. of clean sprigs per hr. . . up to 2000 bu. when equipped with Side-Loading Elevator. Floating PTO Shaft and Shear-Pin protection. Heavy-duty construction.

Side loading elevator optional.

Inquire Now for Delivery This Season  
Manufactured, distributed, serviced by

Willard Duffy  
**BERMUDA KING CO.**

Okarche, Okla. 73762 • 405 263-7389



has not indicated sufficient interest in Benlate for DED control or in the process of solublizing the product. Few, if any, research dollars are being invested by the company to investigate the problem and find the answer to the many, many questions.

Moreover, most firms appear to be totally in the dark about what they are doing. Many are operating first on a blind hunch that their method will work, and second on finding data to substantiate their claim.

Perhaps the only firm to actively investigate the potential of Benlate for DED control has been the J. J. Mauget Company, Burbank Calif. It has a vested interest in sales of the Mauget injection process and thus has invested many dollars to prove or substantiate what it says.

### Four Part Course Features Lawn And Grounds Care

A training course on all phases of lawn care and grounds maintenance will be offered in several major cities nationwide soon.

Course instructor is Donald J. Arenberg, Consulting Agronomists, Lincolnwood, Ill. He has been engaged in the contract application business and is currently a consultant to several firms in the Green Industry. His course of instruction is directed to successful management techniques as they apply to those directly concerned with the lawn care, contract application and grounds maintenance business.

According to Arenberg, the course is designed to teach the latest methods, techniques and concepts, along

with the uniquely new and proven products and equipment to give professional results in the least amount of expense, effort and time.

Training is designed for anyone engaged as purchasing agents, superintendents, foreman and others working in the maintenance of grounds areas. The course is in four parts: lawn care; tree and ornamental care; weed control; and professional techniques that get results.

Course duration is three days. All material presented is on an "eye to eye" basis, said Arenberg. "There are no complex technical terms. And the participant does not need to

know chemistry, physics, botany, math or any other technical background. Training manuals will be given to the student along with special purpose diagnosing equipment and measuring devices. In addition, samples of products will be given to students."

Registration for the course is \$310. This includes manuals, equipment, lunches, coffee breaks, refreshments, and course instruction. Overnight accommodations are not included. Those registering early are permitted a \$60 discount. For more information and details, circle (720) on the reply card.



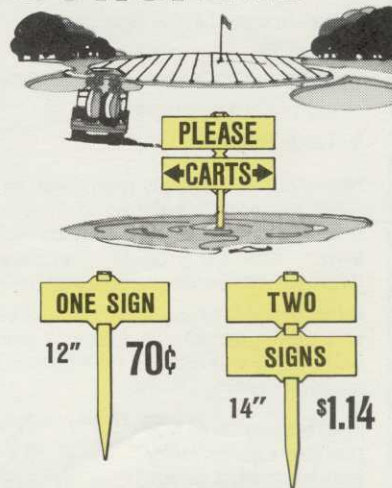
# Cart damage?

## Check it with COURSIGNS

High visibility, high density, rugged plastic signs... that won't rust and won't ruin your mowers. Direct your golfers through trouble spots with a variety of 24 "quick messages." The signs mount on tough plastic stakes, equipped with rope notches for marking off wet, newly seeded or sodded areas.

It's the easy, no maintenance way of keeping your course in top shape... at reasonable cost:

- SIGNS:** \$40.00 per hundred (your choice of 24 "quick messages")
- STAKES:** 12" - \$30.00 per hundred  
14" - \$34.00 per hundred (holds 2 signs)
- ROPE:** \$25.00 per thousand feet



Write for  
**FREE Samples:**

FOB 6500 N. Clark Street, Chicago, Ill.

**COURSIGNS, Inc.**

"an aid to cart management"



Donald J. Arenberg, Consulting Agronomists, Lincolnwood, Ill.



## Groundwater Pollution Course Slated For Early November

An intensive three-day course in "Groundwater Pollution," directed toward professionals working in the water resources field, will be given at the Commodore Hotel in New York City, November 6-8, 1973.

The course is being offered as a continuation of the successful Water Resources Engineering Educational Series presented by University of California Extension and the Uni-

versity of California College of Engineering at Berkeley. Attendance at the course will be limited to 250 individuals.

Arrangements for the presentation have been made by the university in cooperation with Geraghty & Miller, Inc., consulting groundwater geologists and hydrologists, Port Washington, New York. The program is designed with special emphasis on pollution of groundwater in the northeastern states, where public agencies are becoming increasingly concerned about the deterioration of

this vital resource.

Speakers and panel discussions will cover the fundamentals of groundwater pollution as well as methods for abatement and control. Specific instruction will be given in the causes and types of groundwater pollution resulting from man's activities, including chemical, radioactive, biological, and agricultural pollution.

David K. Todd, Professor of Civil Engineering and Chairman of the Division of Hydraulic and Sanitary Engineering on the Berkeley campus, is the course director. Professor Todd is the author of "Ground Water Hydrology," "The Water Encyclopedia," and many other publications in the water field.

Advance enrollment is required, and early application is advisable because of the strict limitation on the number of attendees. Applications may be made by individuals or organizations, and each enrollee may assign one substitute to cover any session he may miss. The fee of \$185 per person covers all sessions, luncheons on the three days, and special course notebook containing reference materials and expanded outlines of the lectures.

Requests for additional information, registration and special hotel accommodation rates, should be addressed to: Continuing Education in Engineering, University Extension, University of California, 2223 Fulton Street, Berkeley, California 94720. Telephone: (415) 642-4151.

# Why let algae and water weeds limit your pond use?

OPEN THE WAY TO A PROPER WEED-FREE  
POND ENVIRONMENT WITH

## HYDROTHOL 47<sup>®</sup>

Without proper control,  
waterweeds and algae can:

1. Restrict or clog irrigation equipment.
2. Reduce water holding capacity of the pond.
3. Create an imbalance in fish population.
4. Limit swimming enjoyment.
5. Tangle fishing lines.

Hydrothol 47 controls many weeds and algae. It provides the proper balance to assure maximum use of this important resource. It helps reduce maintenance, lowers operating costs, increases efficiency and improves the aesthetic value of the pond.

Hydrothol 47 is easy to apply. It is effective, fast acting and biodegradable. It does not accumulate in fish or build up in water or on lake bottoms. It controls most algae, including Chara.

Specify Hydrothol 47 from  
your farm supplier, or, for  
more information, write:

Be sure to ask for the *AGRI-FELDMAN Sponsored Research Bulletin on Aquatics* which appeared in the March issue.



## PENNWALT

AGCHEM-DECCO DIVISION  
1713 SOUTH CALIFORNIA AVENUE  
MONROVIA, CA. 91016 • (213) 358-1838  
111 Windsor Dr., Oakbrook, Ill. 60521 • (312) 325-6120

THIS  
DOESN'T  
BELONG!



## SOUTHERN WEED SCIENCE SOCIETY

Come to Atlanta in January to participate in the 27th annual meeting of the Southern Weed Science Society. Speakers will discuss all aspects of weed science. Interpretation of the Federal Environmental Pesticide Control Act as it affects applicators will be a highlight of the meeting. In addition, sections will be devoted to agronomic crops, aquatic weeds and special weed problems, new developments in the industry and weed control in horticultural crops.

You are invited to attend . . .  
Southern Weed Science Society

**Sheraton Biltmore Hotel**  
Atlanta, Ga.

January 22-24, 1974



# TELL ME MORE

This page is provided for your convenience. To obtain additional information on new products, trade literature and advertised products in this issue, simply circle the corresponding number on the perforated card below, fill in your name, business address and mail the card. No postage is required.

## FOR MORE INFORMATION FILL OUT AND MAIL TODAY!

### ADVERTISED PRODUCTS

101 102 103 104 105 106 107 108 109  
110 111 112 113 114 115 116 117 118  
119 120 121 122 123 124 125 126 127  
128 129 130 131 132 133 134 135 136  
137 138 139 140 141 142 143 144 145  
146 147 148 149 150 151 152 153 154  
155 156 157 158 159 160 161 162 163  
164 165 166 167 168 169 170 171 172  
173 174 175 176 177 178 179 180 181  
182 183 184 185 186 187 188 189 190  
191 192 193 194 195 196 197 198 199

### NEW PRODUCTS

700 701 702 703 704 705 706 707 708  
709 710 711 712 713 714 715 716 717  
718 719 720 721 722 723 724 725 726  
727 728 729 730 731 732 733 734 735  
736 737 738 739 740 741 742 743 744

Please send more information on items circled

(Please type or print)

10/73

Name .....

Position .....

Company .....

Street .....

City .....

State ..... Zip Code .....

Signature .....

Please describe your type of business .....

Note Inquiries serviced until December 20, 1973



Use this convenient card if  
you wish to receive further  
information on products and  
services advertised or de-  
scribed in this issue.

**BUSINESS REPLY MAIL**

NO POSTAGE STAMP NECESSARY IF MAILED IN THE UNITED STATES

postage will be paid by

**WEEDS  
TREES  
and TURF**

POST OFFICE BOX 6049  
DULUTH, MINNESOTA 55806

FIRST CLASS

PERMIT NO. 665

DULUTH, MINNESOTA





# — classifieds —

When answering ads where box number only is given, please address as follows: Box number, c/o Weeds Trees and Turf, 9800 Detroit Ave., Cleveland, Ohio 44102.

Rates: "Position Wanted" 10¢ per word, minimum \$3.00. All other classifications 20¢ per word, minimum \$4.00. All classified ads must be received by Publisher the 10th of the month preceding publication date and be accompanied by cash or money order covering full payment. Bold-face rule box: \$25.00 per column inch.

## POSITIONS WANTED

**SALES REPRESENTATION:** Washington, D.C. (Government), Virginia, Maryland, and Delaware. Seasoned sales organization can handle equipment, turf related chemicals, or specialties. We can tailor our marketing capabilities to meet your needs. W. H. Chadbourne, Agronic's, Inc., 10818 Fairchester Drive, Fairfax, Virginia 22030. Phone 703 471-9660.

## HELP WANTED

### AGRICULTURAL CHEMICALS SALES SPECIALIST

We are seeking an energetic and personable sales professional with 3-4 years proven experience in selling agricultural chemicals, for an opening in the Northeastern States.

Position requires a B.S. degree in general agriculture, agronomy, plant pathology or entomology. Individual should be marketing and sales oriented to assist distributors in developing sales programs, advertising and manufacturing.

Send resume and salary requirements to:

J. K. Leichhardt,  
Employment Representative

**DIAMOND SHAMROCK CORPORATION**  
1100 Superior Ave., Cleve. OH 44114  
An Equal Opportunity Employer

**WASHINGTON TREE SERVICE, Inc.** in Seattle has openings for 2 experienced climbers-trimmers. If you have background and experience to do quality work and are a sober, responsible person, this could be the opportunity you have been seeking. Year 'round job, excellent benefits including profit sharing plan. Relocation allowance to qualified persons. Write or phone: Lou Vaughn, Washington Tree Service, Inc., 20057 Ballinger Road, N.E., Seattle, Washington 98155. Phone 206 362-9100.

**MANAGER WANTED. Line Clearance Operation.** 10 to 15 crews. Candidate must be experienced as Manager for recognized line clearance company. Must be willing to move to southeastern state. All inquiries kept in strictest confidence. Send resume c/o Vern Milhoan, Nelson Tree Service, Inc., 810 N. Avenue, Dayton, Ohio 45406.

**DISTRIBUTORS for D. J. Andrews, Inc.** stump cutter teeth, pockets and bolts. Best wholesale and retail price in U.S.A. Add to this exclusive area, local advertising at our expense, etc., and you have our story. D. J. Andrews, Inc., 17 Silver St., Rochester, N.Y. 14611. Call 716 235-1230, or 716 436-1515.

**INSTRUCTOR for established Turfgrass Management Program** to join three other individuals in department. Applicant should possess desire to teach and willingness to maintain field plots and laboratory equipment. Desired background includes an Associate Degree or higher with minimum of two years practical experience. Send resume to: B. E. Littlefield, Catawba Valley Technical Institute, Highway 64-70, Hickory, North Carolina 28601.

**LANDSCAPE FOREMAN — experienced** in landscaping, horticulture and hydroseeding — mulching. All replies in strict confidence. Full handwritten resume with first reply. Salary open. Papp Landscaping, Box 20284, Billings, Montana 59102. Phone Area Code 406 656-5610.

## SEEDS

**SOD QUALITY MERION SEED for discriminating growers.** Also Fyking, Delta, Park, Newport, Nugget and Pennstar bluegrasses as well as fine fescues. We will custom mix to your specifications. Michigan State Seed Company, Grand Ledge, Michigan 48837. Phone 517 627-2164.

**CROWN VETCH SEED: Penngift and Chemung varieties.** Direct all inquiries to: Walter C. Mehlenbacher, Castile, New York 14427. Phone 716 493-2553.

**ALL VARIETIES, straight or mixed** to specifications, bluegrasses, fescues, bents, others. Markell Seeds, P.O. Box 3397, Green Bay, Wisconsin 54303. Phone 414 437-0851.

## FOR SALE

**CHAIN SAW CHAIN, bars, sprockets,** sharpening equipment, saw parts and accessories. Save to 40%. Professional quality, fully guaranteed. World's largest mail order supplier of this equipment. Free catalog. Write Zip-Penn, Box 43073-A68, Middletown, Ky. 40243.

**DOUBLE EDGE sod cutter blades.** Will fit any Ryan sod cutter. Works like double edge razor blade. Cuts much more sod per blade. Made to bolt on both ways. \$24.00 plus postage. New automatic sod loaders for direct loading to pallets, trucks or trailers. No workers needed on ground. Both products developed and designed by Hadfield. Write or call Glen Hadfield, 4643 Sherwood, Oxford, Michigan 48051. Phone 313 628-2000.

**GOLD COURSE GREEN DESIGNS** including specifications, irrigation and drain tile layout, \$35.00 each. For more information, write Golf Course Specialty, 330 Cicero Ave., San Antonio, Texas 78218.

**ARPS stump cutter teeth, top quality** and best price in U.S.A., D. J. Andrews, Inc., 17 Silver St., Rochester, New York 14611. Call 716 235-1230.

## MISCELLANEOUS

**TREE APPRAISALS, SURVEYS,** loss evaluations and expert consultation services. For names of members of the American Society of Consulting Arborists, Inc., throughout the country, contact: Executive Director ASCA, 12 Lakeview Ave., Milltown, New Jersey 08850.

## USED EQUIPMENT

**RECONDITIONED brush chippers,** sprayers, log splitters, stump routers, bucket trucks. Let us know your needs. Equipment Sales Company, 5620 Old Sunrise Highway, Massapequa, New York 11758. Phone 516 799-7619.

## —Advertiser's Index—

Agro-Chem .....	11
Applied Biochemist, Inc. ....	38
Asplundh Chipper Co. ....	42
Hayden Beatty Rambler, Inc. ....	34
Berkeley Pump .....	45
Bermuda King Co. ....	46
CarTree Systems .....	40
Certain-Teed Products Corp. ....	37
Consulting Agronomists .....	41
Coursigns, Inc. ....	47
Deere & Co. ....	13
Dow Chemical Co. ....	21
Edwards Mfg. Co. ....	5
FMC Corp., Agri. Chemical Div. ....	7
Austin M. Frishman .....	33
Hahn, Inc. ....	43
Clifford B. Hannay & Son, Inc. ....	33
Hypro, Inc. ....	26
International Spike, Inc. ....	35
Jacklin Seed Co. ....	9
Jacobsen Mfg. ....	2nd cover
Jenkins Equipment Co. ....	35
Lifetime Career Schools, Inc. ....	38
Lindig Mfg. Corp. ....	31
Mobile Aerial Towers, Inc. ....	27
Moody Sprinkler .....	32
F. E. Myers & Bros. Co. ....	6
Ohio Turfgrass Foundation .....	4th cover
Pennfine Perennial Ryegrass ..	3
Product Development International .....	35
Rain Bird Sprinkler Mfg. Corp. ....	3rd cover
The Toro Company .....	15-16
Vermeer Mfg. Co. ....	36



## trimmings

**GYPSY MOTH** is holding true to its roving ancestry. The pest has now been found for the first time in Georgia, says USDA officials. They also report increasing numbers of the beast in Michigan and Virginia. Seems as if the American tourist has helped the gypsy moth in its travels. The Georgia find was located in a campground near Atlanta.

**SOY BEVERAGES** may be coming on strong in the future. Soybeans as a source of protein and fat for beverages holds real possibilities. In a process developed by Gus C. Mustakas of the agricultural research service, concentrated soybeans retained 94 percent of the protein and 85 percent of the oil. The fat-protein concentrate produced by the process reconstitutes in water to a smooth, light-colored bland base. A wide variety of high-quality beverages or formulated foods can be produced by adding minerals, vitamins and flavor ingredients. The liquid product can be spray-dried to a reconstitutable powder, if desired, for convenience or for reducing shipping costs.

**OWNER - MANAGER - EMPLOYERS** of firms are also considered "employees" by the Occupational Safety and Health Act. In a ruling coming from the Occupational Safety & Health Review Commission, owners who also work as employees are subject to the same restrictions of the law as employees with no ownership. This means, for example, that if you own and operate a one man tree care service you must comply with OSHA the same as if you had 20 employees.

**EPA TRAINING PROGRAMS** have been funded to the tune of \$1.85 million. The programs will be run by the Department of Labor and the Environmental Protection Agency and will be operated in 39 states and Puerto Rico. Areas of training include solid waste, air pollution and pesticides. EPA has identified 2,200 people to be trained, primarily in state and municipal agencies.

**LOOKING FOR A PROGRAM** on pesticide safety? "Handle Pesticides Safely—Like a Pro!" is a canned program which consists of 38 slides, recorded cassette and script. The slides depict proper handling and

safety practices for pesticide applicators. The cost is \$14.95 complete from the Department of Communications, National Agricultural Chemicals Association, 1155 — 15th Street, N.W., Washington, D. C. 20005.

**TAKE TIME TO MAKE A NOTE** is the advice from top managers in the Green Industry. "It's impossible to keep all the details of every job plus the hoard of other important information in your head all the time," says one tree care firm official. "I have a tablet or 3 x 5 inch card ever present to record my thought at the time. It's saved many embarrassing situations later on."

**NATIONAL ARBORIST ASSOCIATION** officials have a big grin on their faces. If everything goes as planned, the true meaning of Christmas will have greater value in Washington D. C. and the rest of the nation this year. NAA has secured a live Christmas tree for permanent use by the country as the national Christmas tree. It will replace the traditional cut tree donated by states and decorated during the yuletide season. The tree — it's a Blue Spruce located in Pennsylvania by Ray Gustin, Jr. It will be relocated to the Washington ellipse, just behind the White House.

**B.G. DAY**, owner Sterling Turf Farms, Johnson, Vt. tells us this story about one of his customers: "He was a professional man who had had our sod installed at his home in 1972," says Day. "He came to us and said, 'We wish to add several new rooms to our house. Before we excavate please come and roll up our lawn and store it until we are ready to put it down again.' We solved this one quickly by

agreeing to lift the customer's lawn if in satisfactory condition and selling it to another nearby customer. Then we furnished him with a new lawn at the proper time."

**RESERVE-A-ROW** is one of the cleverest ideas in the business. Wandell's of Urbana, Ill. uses it to merchandise shade trees. Under the purchase arrangements the customer, upon selecting his row of trees, makes a deposit and an annual payment. After selection the row is completely under his control as to time and size at harvest. Wandell's carry on all cultural practices including trimming and pruning to the customer's specifications and harvests when he wishes. What does it cost? The company charges the current price list at the time of purchase plus or minus a price adjustment based on the Cost of Living Index.

fic Instruments Division, Beckman Instruments, Inc., 2500 Harbor Blvd., Fullerton, CA 92634.

### Beckman Offers pH Catalogue

A new 28-page catalog describing Beckman Instruments' complete line of eight laboratory pH meters is now available from the company. Detailed specifications, features, applications and ordering information are included.

The fully-illustrated publication also covers a wide range of Beckman pH, reference and Selection® electrodes, as well as accessories for Beckman and other pH meters.

For a copy of Bulletin 7147, "The Beckman pH Catalog," write Technical Information Section, Scienti-

### Handy Acreage Calculator

Looking for a quick and easy way to accurately calculate the acreage of weed infestations? A service publication, "Calibration of Herbicide Sprayers," produced by the University of California, Davis, has just the ticket. Robert W. Brazelton, extension agricultural engineer shows how:

1. Multiply the length by the width

Example:  $110 \times 85 = 9,350$  (in square feet)

2. Multiply this figure by 23

Example:  $9,350 \times 23 = 215,050$

3. Point off six decimal places and you've got it — .215 acre. Try it for yourself. It will work every time.