

Table Top Surfaces

Leading sod farmers are using Eversman Automatic Land Levelers to make smooth, uniform seedbeds.

Also for golf courses, cemeteries, landscape architects.

Eversman Smoothers combine in one machine a field plane, open bottom scraper and a complete tillage tool for superior seedbed preparation. Smooth, level fields make possible even seeding, uniform germination with uniform turf maturity and faster, precision harvesting on fields that are easy on equipment.

The exclusive EVERSMAN Crank Axle.

The secret of the success of Eversman Land Levelers is the exclusive crank axle design. This principle is as simple as a child's teeter-totter. When one end goes up—the other goes down.

The leveler's main wheels are placed outside the cutting blade for a specific reason. These wheels serve as *feeler gauges*. They follow the contour of the

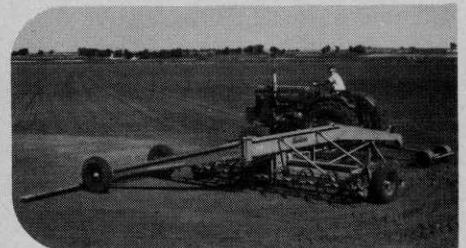
field and automatically adjust the cutting blade to the correct depth—independently of the tractor driver.

When these gauge wheels come to a high spot or ridge, they ride up on top of the ridge and this forces the blade to lower and cut through the ridge. The soil is then carried along by the blade until the gauge wheels go into a hole or depression in the field, which forces the blade to raise and fill the depression.

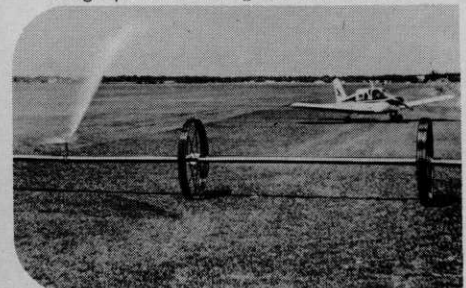
Eversman offers land smoothers in sizes and price ranges to accommodate your size operation and your regular wheel tractors, from 3-plow to 5-plow models. (Blade widths 9' or 12'; lengths of 32' or 45'.) Write for folder which gives complete information.

Eversman Manufacturing Company, Dept. S21, Curtis & Fifth Streets, Denver, Colorado 80204

Eversman



The exclusive Eversman "Hinged Frame" design permits working the field corners.



Users Tell The Story

"We have been using Eversman levelers for over fifteen years," writes Dale Habenicht of H & E Sod Nursery, Inc., Tinley Park, Illinois. "Several other types were tried, but we've always found the Eversman to be the most satisfactory. They give us the smooth surface we are looking for—with easy maneuverability.

"The H & E Sod Nursery operates three farms consisting of 1300 acres. I commute between farms with my Cherokee 180 and use the sod fields that have been leveled by the Eversman for landing strips."

"We could not properly prepare our seedbeds without the Eversman Leveler," writes Parker Sherling, Manager of Princeton Turf Farms, Inc., Centerville, Maryland.

"In preparing our fields" Parker Sherling continues, "we instruct our operators that a field is not ready until a car can be driven in any direction at 40 miles per hour over the field. It's a joke, but we actually bring our fields to this condition.

"Our operators have also developed the skill where we can shape our drainage ditches with the same machines, thus saving the rental of additional equipment."

WEED CHALLENGE

(from page 40)

in 13 locations in Floriad last August. He said that the insects have successfully completed their life cycle on water hyacinth and careful examination of the leaves has revealed eggs and developing larvae produced by this generation.

Dr. Robert W. Geiger, 3M Company spoke on a new algicide for filamentous algae and chara. He said that promising results from early tests indicate effective control of these problem weeds.

New officers of SWSS for 1973 are: Dr. Allen F. Wiese, Texas A&M University, USDA Southwestern Great Plains Research Center, Bushland, Texas, president; Dr. William G. Westmoreland, Ciba-Geigy Corporation, president-elect.

Turfgrass Weed Control Studied In NE Universities

New compounds and techniques of weed control in turfgrass continue to be major areas of study in many

northeastern universities.

The evaluation of pre-emergence crabgrass herbicides goes on in an effort to discover effective materials which may be used more safely on a wider range of turfgrass species. The flexibility in time of application is also an important consideration.

In post-emergence applications made by John A. Jagschitz, assistant professor plant and soil science dept., University of Rhode Island, new compounds which can control the grass-like weed nutsedge are also being evaluated.

Chemicals which prevent seed head formation are also under test. This work is being done by T. L. Watschke, J. M. Duich and D. V. Waddington of the department of agronomy, Pennsylvania State University, University Park, Pa. These chemicals will prevent the spread of weeds which must reproduce by seed. Lawn grasses are perennial in nature and reproduce by the formation of underground or above-ground stems which produce new plants. Lawn grasses need not ever go to seed as must annual broad-leaf and grassy weeds.

This is another method of plant population control without the immediate elimination of the weedy plant pest. It is a program approach and may someday supply another useful tool to the turf grower.

Hale Pump Line Expanded

To meet the growing demand for increased volume and pressure ranges in irrigation pump requirements, Hale Pumps, Conshohocken, Pa., has recently broadened its lines of irrigation pumps. This expansion includes important additions to its PTO and skid and trailer lines.

In the PTO group, Hale now has a full range of pumps to match the power of every tractor size — from 15 hp to 150 hp. These pumps are designed to meet any irrigation volume requirement — from 200 gpm to 2000 gpm at operating pressures from 150 psi through 200 psi.

Where large irrigation demands are a factor, the manufacturer now provides a complete line of skid and trailer mounted pumps capable of supplying volume needs from 550 gpm to 2700 gpm at pressures from 140 psi to 160 psi.

Our sprayers go un-noticed.

You'd never know they've been there. 'Til you see the spray results. Then you realize the performance capabilities of Myers TL10E2 Turf Sprayers. Plus their gentle nature. Standard equipped with dual "Pillows of Air" Terra Tires. For minimum ground compaction. Only 14.1 PSI. Standard 21' boom also. For turf maintenance in parks, golf courses, etc. Engine powered. Du-All 10 GPM, 20 to 500 PSI spray pump for full range chemical applications. Also available — skid model with live hose reel for insect, weed and sanitary operations.

Myers

The name that works for you.

THE F. E. MYERS & BRO. CO. DIVISION OF McNEIL CORPORATION
400 ORANGE STREET * ASHLAND, OHIO 44805





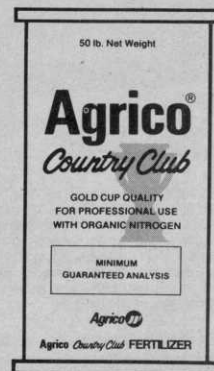
Agrico
puts you
eighteen
up on the
competition,
before the
competition
even
begins

Agrico Country Club fertilizers will help you get the most out of your golf course . . . the most people, the most wear, the most green. We've spent a lot of time developing a custom-tailored program for your golf course. We sincerely believe that it's the best there is. If you want a greener, thicker golf course, use Agrico.

And you can stay
eighteen up all year long.



One of the Williams Companies
Agrico Chemical Company
Tulsa, Oklahoma 74103



THE NEW LOOK IN HEAVY DUTY COMMERCIAL MOWERS

GOODALL FOR THE '70'S



GOODALL SELF-PROPELLED

Easy handling, professional design, finger tip power steering and turning, comes in 21", 24", 28", 32", 36" and big 52" cuts ups to 8 h.p. engine.

GOODALL PUSH MOWER

Rugged, unbreakable steel handles, available in 18", 19", 20", 22" cuts, engine comes in 3.5 or 5.0 h.p.

GOODALL EDGER-TRIMMER

Unbreakable steel handles, 3 h.p. engine, steel wheels on ball bearings, 10" cut.



THE TRUE PROFESSIONAL LINE
GOODALL

Manufactured by BUNTON CO. WT-373

For information, write GOODALL DIVISION
1405 Bunton Rd., Louisville, Kentucky 40213. Phone (502) 459-3811
For More Details Circle (180) on Reply Card

GREATEST SPECTACLE

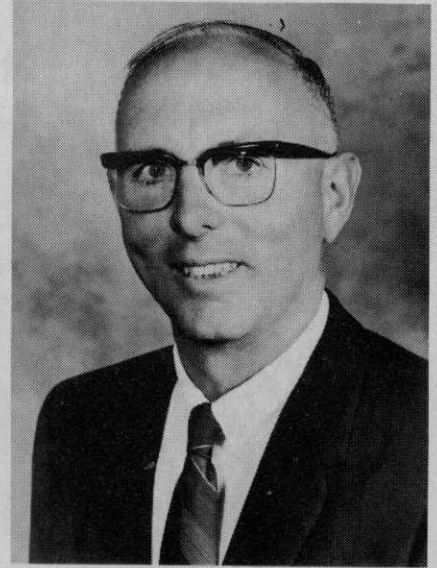
(from page 38)

He also suggested strongly that employees be subjected to hearing tests.

In the area of administrative control of noise, he offered these suggestions: 1. Don't operate equipment too near the edge of a course too early in the morning. It distracts adjacent landowners. 2. Don't use two pieces of high noise emitting equipment together. 3. Trees, bushes and other vegetation act as a noise barrier. 4. Keep equipment in good repair.

James L. Holmes, the Green Makers, Bryan, Texas expressed his views as a builder in changes affecting green construction. Noting that greens have been built quite far into the south which support excellent bentgrass turf, he said the key to a properly constructed green is in adequate infiltration, percolation, water retention and drainage.

Dr. R. E. Engel, professor, soils and crops department, Rutgers University spoke on "the effect of nitrogen fertilization on annual bluegrass encroachment in bentgrass. He feels the management practices of superintendents in relation to nitrogen use are in part responsible for the en-



Clifford A. Wagoner, superintendent of Del Rio Golf and Country Club, Modesto, Calif. is the new GCSAA president.

croachment of annual bluegrass. He said that it has been shown that high rates of N often result in more annual bluegrass.

"Experience gained from research trials has taught us one lesson on N fertilization of bentgrass turf," he remarked. "Namely, avoid any type of high N treatment that is likely to cause massive turf failure and open the turf to increased encroachment of annual bluegrass.

He offered these suggestions to superintendents: 1. Use no more N than necessary for satisfactory growth. 2. Slow, steady growth is best. This is best done with small and more frequent applications. Amount of clippings in optimum cool weather and color are good indicators of N need. 3. Establishment or re-establishment are the only place for more generous N programs on bentgrass.

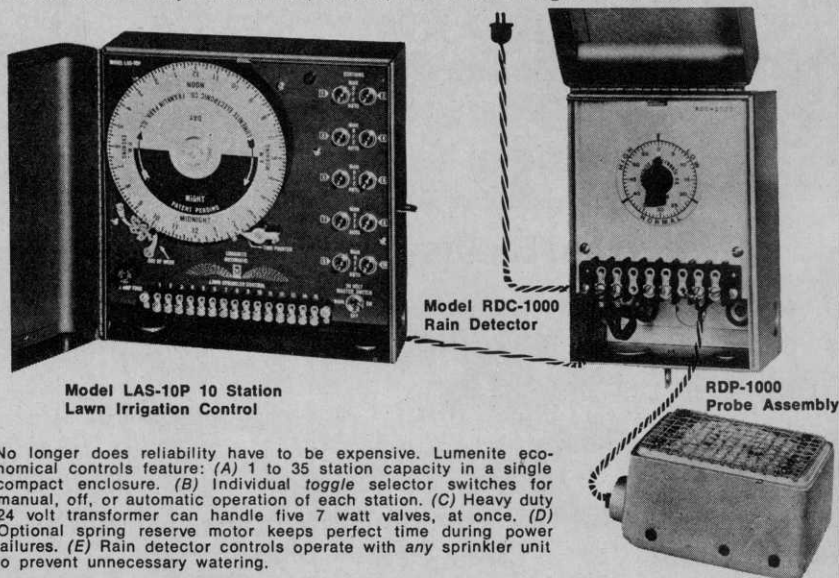
Changes in automatic irrigation concepts from the manufacturer's point of view was the title of the presentation by Ed Shoemaker, national sales manager, Rain Bird Manufacturing Corporation.

"As a marketing organization," he said, "We see ourselves helping you stay out of the traps and pitfalls in a major undertaking such as the construction of an automatic irrigation system." He said these traps can be avoided with the system has the proper planning: 1. Inadequate budget; 2. The free plan; 3. Custom designed equipment; 4. Do it yourself; 5. The low bid; 6. Cut now — pay later; 7. Push button operation.

Speaking about the changes in the demand for superintendents, Gregory W. Graham, turfgrass management (continued on page 76)

FINALLY! AT LAST! IT'S HAPPENED!

Lumenite, with 35 years experience in the timing control and liquid sensing fields, offers a truly economical, deluxe, line of lawn irrigation controls.



Model LAS-10P 10 Station
Lawn Irrigation Control

Model RDC-1000
Rain Detector

RDP-1000
Probe Assembly

No longer does reliability have to be expensive. Lumenite economical controls feature: (A) 1 to 35 station capacity in a single compact enclosure. (B) Individual toggle selector switches for manual, off, or automatic operation of each station. (C) Heavy duty 24 volt transformer can handle five 7 watt valves, at once. (D) Optional spring reserve motor keeps perfect time during power failures. (E) Rain detector controls operate with any sprinkler unit to prevent unnecessary watering.

Write today for further information and the name of the nearest Lumenite distributor.*



LUMENITE

ELECTRONIC COMPANY
DEPT. I.C.

2331 NORTH 17TH AVE., FRANKLIN PARK, ILL. 60131
PHONE (312) 455-1450

*Protected areas are still open for qualified distributors.

It Blows...It Dusts...and It Sprays...Better! Because It's a STIHL!



This is the STIHL SG-17 Mist-Blower that Everyone is Talking About!

It blows, dusts and sprays dry and liquid chemicals, etc. to kill weeds and insects; to fight plant and tree diseases and to perform many related jobs in the garden, on the farm and in nurseries.

It has also proven very versatile for spraying at construction jobs, blowing leaves and debris in sport stadiums, parks and recreation

areas, in spraying cattle and dairy buildings and many new uses are being discovered every day.

You'll be amazed at its perfect balance and ease of handling and also at its very, very easy price. See for yourself. It's a STIHL!

**»Newest from the Makers of the World's
Finest Chain Saws«**



STIHL American, Inc.

194 Greenwood Avenue,
Midland Park, N.J. 07432,
Code 201-445-0890 ·

7364 Lee Industrial Boulevard,
Mableton (Atlanta), Georgia 30059,
Code 404-941-1730 ·

23962 Clawiter Road,
Hayward California 94541,
Code 415-785-9100

For More Details Circle (142) on Reply Card

WALK AND THATCH

WALKING THATCHER



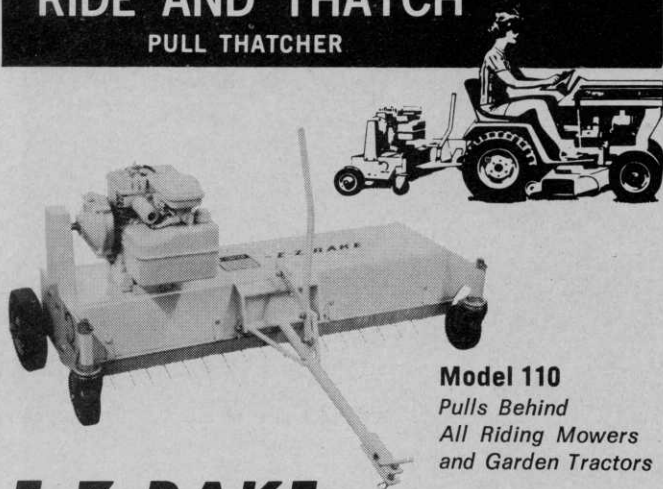
Lightweight!
E-Z To
Load!
E-Z To
Handle!

Model 48
18"
Thatching
Width

Model 64
24" Width Also Available

RIDE AND THATCH

PULL THATCHER



Model 110
Pulls Behind
All Riding Mowers
and Garden Tractors

E-Z RAKE GIVES YOU A CHOICE!

VERSATILE WALKING THATCHER propels itself. Features positive gear-and-chain tine drive. Lightweight, folding handles, make storage and transport easy. Counterbalanced leg rests, 4 wheels, make handling easy. Lifts thatch efficiently, and thoroughly. 100% steel construction for long life—simple, minimum maintenance!

PULL THATCHER has 38" thatching width. Attaches quickly, easily behind all riding mowers and garden tractors. Powered by 3 h.p. gear reduction engine.

All E-Z RAKE Thatchers feature tough sleeved spring tines with positive raking action. Bolt-on tines deflect—minimize breakage—are easily and quickly replaced when necessary.

WRITE FOR DETAILS!

E-Z RAKE, INC. LEBANON, INDIANA 46052



Manufacturers of—

E-Z Walking Thatchers • E-Z Front End Thatchers
E-Z Pull Thatchers • Carts and Accessories
E-Z Vac Vacuum Sweepers and Attachments

— meeting dates —

Iowa Golf Course Superintendents Association, 39th annual turf conference, Ramada Inn, Waterloo, Ia., March 12-14.

Turfgrass Conference, North Carolina State University, Faculty Club, March 13-14.

Western Society of Weed Science, annual meeting, Ridpath Hotel, Spokane, Wash., Mar. 13-15.

National Conservation Tillage Conference, sponsored by the Soil Conservation Society of America, the American Society of Agronomy, the American Society of Agricultural Engineers and the National Association of Conservation Districts, Hotel Fort Des Moines, Des Moines, Ia., March 28-30.

Arizona Turfgrass Conference, Plaza International Hotel, Tucson, Ariz., April 4-5.

Atlantic Provinces Turfgrass Conference and Exposition, Halifax, N.S., Canada, April 9-10.

Annual Spring Institute (Horticulture), sponsored by the University of California agricultural extension and the Southern California Turfgrass Council, Quality Inn, 616 Convention Way, Anaheim, Calif., April 18-19.

Florida Turf-Grass Trade Show and Turf Management Clinics, Curtis Hixon Convention Hall and Manger Motor Inn, Tampa, Fla., April 29-May 2.

Pacific Seedsmen's Association, annual meeting, SS Queen Mary, Long Beach, Calif., April 29-May 2.

Central Plains Turfgrass Field Day, Minor Park, Kansas City, Mo., May 8.

Florida Nurserymen and Growers Association, The Breakers Hotel, Palm Beach, Fla., May 17-19.

Western Chapter, International Shade Tree Conference, annual meeting, Hotel Utah, Salt Lake City, Utah, June 17-20.

International Turfgrass Conference, 2nd annual, Virginia Polytechnic Institute and State University, Blacksburg, Va. June 19-21.

American Association of Nurserymen, Radisson Hotel, Minneapolis, Minn., July 14-18.

Hyacinth Control Society, Hotel Monteleon, New Orleans, July 15-18.

American Sod Producers Association, annual meeting, Denver, Colo., July 16-19.

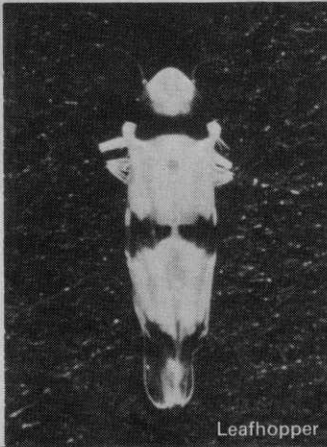
International Shade Tree Conference, 49th annual meeting, Sheraton-Boston Hotel, Boston, Mass., Aug. 12-16.

Industrial Weed Control Conference, 8th annual, Texas A&M University, College Station, Tex., Oct. 15-17.

Central Plains Turfgrass Conference, Manhattan, Kans., Oct. 17-19.

California Weed Conference, Woodlake Inn, Sacramento, Calif., Jan. 21-23.

Southern Weed Science Society, Sheraton Biltmore Hotel, Atlanta, Ga., Jan. 22-24.



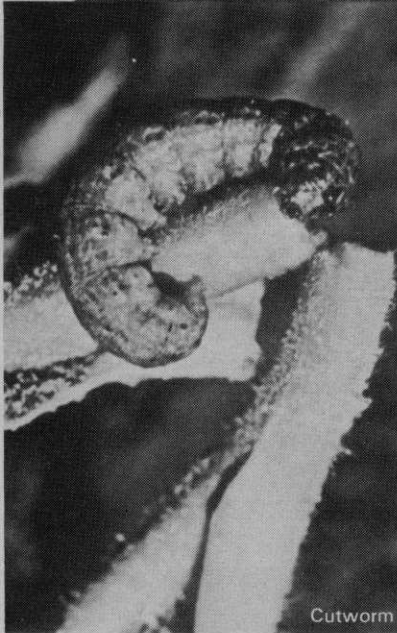
Leafhopper



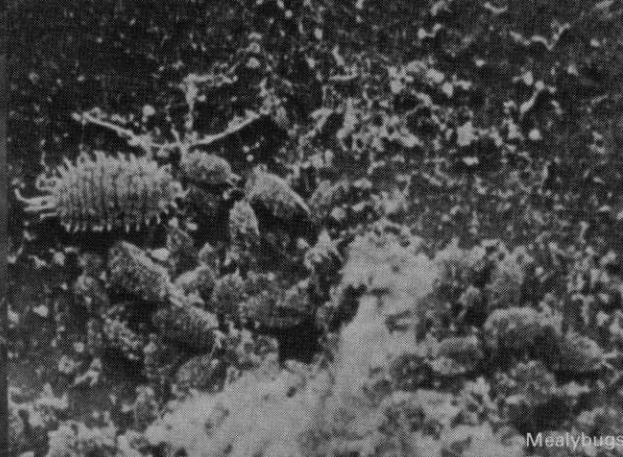
Grasshopper



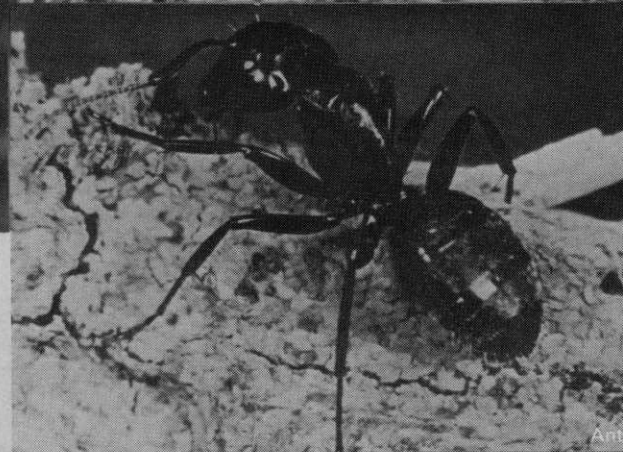
Hairy chinch bug



Cutworm



Mealybugs



Ant



Bagworms

Ag-Organics Department, Midland, Michigan 48640

These are only seven of the turf and ornamental pests Dursban controls.

If we had more space, we could show you another seven. Like sod webworms, brown dog ticks, earwigs and *Hyperodes* weevils in turf. Or ornamental plant pests like mites, spittlebugs, exposed thrips, white flies and many more. But our point is, DURSBAN* insecticide is the choice of professional lawn spraymen when they need to get the job done. DURSBAN insecticide is effective on a wide variety of insects—including resistant strains. And it's effective in a wide variety of applications. It's economical because a little goes a long way. It's non-phytotoxic, and it is biodegradable. So, if you haven't tried it yet, it's about time you did. Just remember to read the directions for use and follow the precautions for safe handling on the product label.

*Trademark of The Dow Chemical Company



DOW CHEMICAL U.S.A.

For More Details Circle (168) on Reply Card



Clean ground under ball park bleachers is treated with Hyvar X. Area is easier to keep clean and tidy when weeds and grass are eliminated. A single treatment lasts a season.



Manicured lawns and ornamentals greet visitors at Ft. Dix, one of the largest military installations in the northeast.

HALT WEED ASSAULT (from page 14)

had been eliminated entirely at Fort Dix.

"Now we're able to maintain vegetation control under fences and around other obstacles such as sign

posts and fire hydrants. So we can use tractor-driven gang mowers exclusively," says Haug. "Without these herbicides we would need at least two more men for mowing

fence lines alone."

Haug relies on two basic chemical recipes to keep weeds in check. Areas near trees or high-value ornamental plantings are treated with a mixture of Simazine weed killer plus a con-

(continued on page 62)

**TREES
'IRON-SICK'?**

TREE SYSTEMS*

MEDICAPS

Worth Over 400
Times Their
Weight in Iron

New!!

**Medicaps Trunk Injection
For Fast Easy
Charolais Remedy**

ACCURATE
Premeasured, self-contained MEDICAPS "cartridges."

EFFECTIVE
Trees respond to MEDICAPS treatment in as little as 14 days. Tested by leading Universities.

ECONOMICAL
More efficient than soil or foliage applications. MEDICAPS efficiency means low cost with lasting results.

*U.S. Patent Pending

Write today for additional information on MEDICAPS, and the name of your nearby MEDICAPS distributor.

Creative Sales, Inc.

200 South Main
Fremont, Nebraska 68025

RED RIDER

**THE THREE SEATER
WITH TWENTY-THREE FEET!**

- Seats Three Men Up Front
- Carries 23 cubic feet Out Back
- Also available in 8 and 10 H.P. models
- Simple Maintenance
- Completely Dependable

SMITHCO inc.

WAYNE, PA. 19087

● Ask for Demonstration. Write for Information.



Dacthal[®] drives 20 annual weeds off the course with one easy swing.

One application early in the spring. That's all it takes. Dacthal preemergence herbicide prevents 20 annual weeds from sprouting all season long. Problem weeds like carpetweed, chickweed, purslane and others. So you can devote time and manpower to more important work.

Dacthal doesn't stop there. It also drives out troublesome crabgrass and *Poa annua*. Hit'em in the spring. And follow through with Dacthal in late summer for control of *Poa annua* and other late-germinating weeds.

Over the years, Dacthal has proven to be the closest thing to worry-free weed control. It won't harm new grass when used as directed. Won't leach out with frequent waterings. And there's no problem of residue buildup in the soil.

Dacthal degrades, naturally, in one season. Just read and follow label directions.

You can even use Dacthal to keep the weeds out of flowers and shrubs. It's cleared for use on over 120 ornamentals. That's one more beauty of it.

This year, drive out weeds with Dacthal... the all-around favorite preemergence herbicide. Available in wettable powder or granules. Ask your supplier for more information or write: Agricultural Chemicals Division, Diamond Shamrock Chemical Company, 1100 Superior Avenue, Cleveland OH 44114.

**TOTAL
TURF
CARE**



**Diamond Shamrock
Chemical Company**

A UNIT OF DIAMOND SHAMROCK CORPORATION

For More Details Circle (113) on Reply Card

International

Our 2400A Lo-Boy:

Built for mowing— from the grass up.

And just what is a *mowing* tractor?

A good one is squat and compact, clings to slopes without slipping. It's nimble. Brakes, turns on its own axis and steers like a sports car.

It's geared for every speed from creep-mowing next to fences and obstacles up to nearly 20 mph highway transport. It's versatile — works with a rotary mower, ganged reels, or flail in the rear, and at the same time can handle a cutterbar with its side PTO.

And because grass just won't wait, it's built with the power and strength to get big mowing done in a hurry. Without breakdowns. With a minimum of maintenance.

That's a *mowing* tractor.
That's our 46 hp 2400A Lo-Boy.

Your International dealer has all the exact specs, including 9 ft. turning radius; hydrostatic power steering; 8-4 synchromesh shift-on-the-go transmission with Hi-Lo range and straight-line shifting; independent rear PTO, side shaft optional; big 11-inch Dyna-Life® clutch; wet disc hydraulic brakes — a package no other mowing tractor on the market can match.

Phone your dealer soon and let him prove it on your own turf.

**We keep getting better at
our business to get more of
your business.**

And keep it.



INTERNATIONAL HARVESTER