

## DEVELOPING A GOLF COURSE?



**The easiest way to  
wreck a golf club is  
leave too many stones unturned**



Greens are meticulously shaped to specifications and groomed before seeding.



An array of our modern mobile equipment, ready to move to another site.

Nothing costs a golf course more grief than having equipment damaged by stones and rocks. And, golfers, too, are unhappy when woods and irons are damaged by stones.

Our stone picking method prevents down time on equipment — and — unhappy golfers.

The fast and efficient **Bergman Method** of golf course preparation plows deep; turns and returns the soil to bring rocks and debris to the surface; rakes and picks the stones before leveling, contouring, fertilizing and seeding, including tees and greens.

We can install your irrigation system at the same time. We also specialize in irrigation consultation and supervision.

These are the reasons why **Bergman Method** golf courses are played by more enthusiastic golfers sooner . . . why "stony" is the description of a beautiful approach shot and not a criticism of the condition of the course. And because we are a "family" company, your golf course is assured of tender, loving care.

**We go anywhere**

**Wm. Bergman, Jr.**

Over 26 Years Experience

1335 M-15 — REESE, MICH. 48757

PHONE: CODE 517 VO 8-9812

**STONE PICKING—SEEDING—FERTILIZING—IRRIGATION—CONSULTATION**

For More Details Circle (101) on Reply Card

## WORMS, WORDS AND WILLINGNESS

(from page 23)

has three primary advantages. "The first," he said, "is timeliness. The oil formulation can be applied one quart undiluted per acre. That contains one pound of the active ingredient. Compared to diluted or water formulations, we could thus treat four times more acreage per load. This enabled us to treat 10,000 acres in two weeks using only two helicopters. Since we had to contract for extra helicopters and pilots, we were able to reduce our costs and pass along the savings to the towns."

"Secondly," Canning continued, "the material saves handling. We got bulk delivery of the product in tank trucks direct from the point of manufacture. The tank truck went right into our warehouse and pumped into our nurse tanks."

The third advantage cited by Canning was good control. "From the customers point of view," he said, "this is the most important benefit of all. Sevin-4 Oil remains on leaf surfaces despite heavy rains in the spring. It provides consistent performance — and that's what gets you repeat business year after year."

Keeping the spray material on the trees is also important from an ecological standpoint, according to Emile Ollivier. "Even with all the rain we had during the spraying period, we had no complaints where we sprayed. There were no fish kills and no apparent effect on wildlife," he said.

About the only complaint Ollivier did hear during the successful spray program was a far cry from complaints he had heard earlier from environmentalists. Some residents were unhappy that their property could not be sprayed. Because state regulations prohibited spraying the heavily wooded, sparsely populated areas, many individual property owners within these areas were missed in the spray program. Ollivier received, in fact, over 400 requests for spraying from residents within the out-of-bounds areas.

"That's one of every eight people in Orleans," he noted. "Last year during the big anti-spraying debate, people signed petitions against spraying. This year, after the big infestation, the same people were begging us to spray." □

## Fungo Turf Fungicide Introduced by Mallinckrodt

Mallinckrodt Chemical Works is introducing Fungo—50 brand turf fungicide, a broad spectrum, systemic agent for control of a wide variety of turf diseases.

According to an announcement by Stan Frederiksen, manager of specialty agricultural products, Fungo controls most of the important diseases which attack turf. At modest treatment rates, it controls Brown Patch, dollar spot, Fusarium patch (pink snow mold), and copper spot. At somewhat higher rates, carefully drenched in, Fungo—50 readily controls Fusarium blight (*Fusarium roseum*), stripe smut, and powdery mildew.

Fungo may be tank-mixed with Koban fungicide to achieve a even broader spectrum of control, including pythium, or with Thiramad, maneb, or zineb for control of leaf spot and/or melting out diseases during spring and fall.

Highly effective, and quite economical in use, FUNGO is safe on the finest turf. Rates as high as eight times the minimums have thus far produced no turf damage or discoloration.

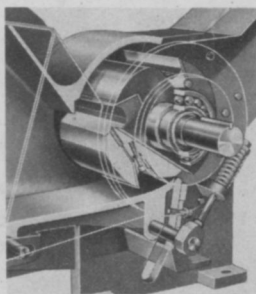


## COMPARE CHIPPERS

See why M-B FITCHBURG is the  
INDUSTRY'S STANDARD

### EXCLUSIVE SPRING-SUPPORTED FEED PLATE

Feed pressure is continuously adjusted to size and hardness of wood. NO FLYWHEEL NEEDED, faster chipping at lower RPM, less stress on component parts.



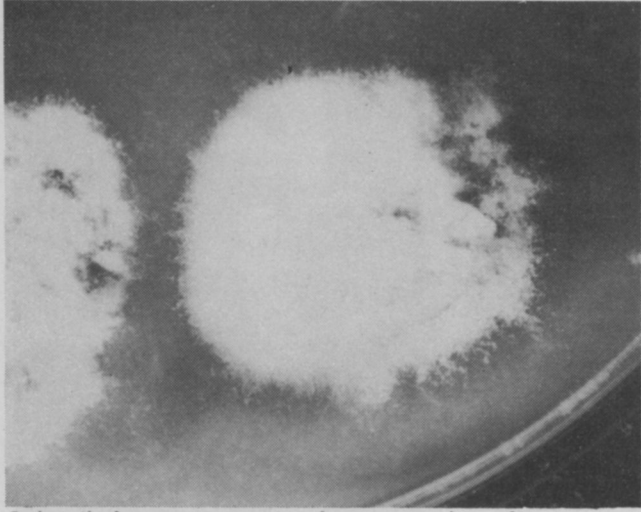
- Spring-supported feed plate *eliminates flywheel.*
  - Choice of FORD 6-cylinder or V-8 Industrial Engines.
  - Two models provide material capacity up to 9" dia. round stock, and 14" wide slabs.
  - Easily adjustable chip discharge chute with full 180° rotation.
  - Safety stop switches; optional safety brake.
- Send for literature and name of your nearest dealer.

C-73

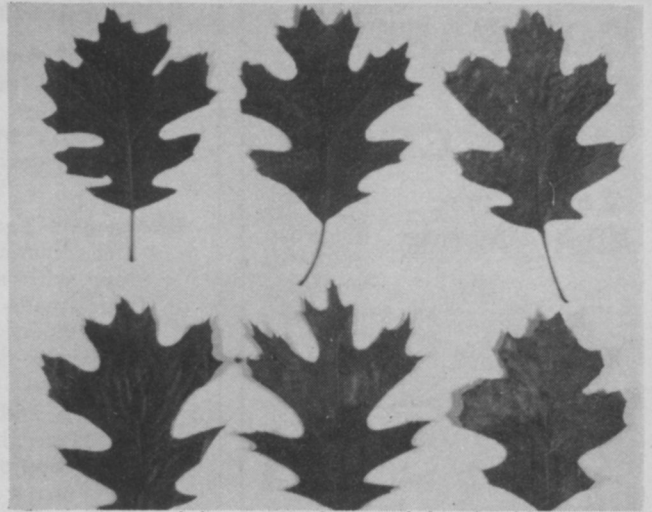
## M-B COMPANY

Division of Evans Industries, Inc.

New Holstein, Wis. 53061  
Phone: (414) 898-4261



Oak wilt fungus is growing here on a chip of a tree previously infected. This is one of the cultural techniques used to identify the disease.



Symptoms in oak leaves. Leaf at top left is healthy. Disease progresses (l-r) until leaves become brown and lifeless as in the lower right.

### TREE DESTROYER (from page 20)

Close observation and removal of the infected areas or the entire diseased tree must be accomplished to prevent infection of healthy trees.

One of the best guards against disease is a rapidly growing tree. This can normally best be accomplished in the forest stand by removing the poor trees and allowing the remaining trees to maintain a high degree of vigor. Valuable shade trees and ornamentals should be planted on the proper site, be relatively free of competition and be given adequate fertilization and water.

To further clarify the host/disease relationship that may occur let's look at oak wilt disease in detail. As an illustrative disease, it will enable us to understand the concept of a tree disease more thoroughly. It will also help in initiating programs to reduce the loss of valuable plantings.

Oak wilt is thought to be native to the United States. It is not known

to occur in any other country.<sup>1</sup> It was first reported in 1942. The fungus now has spread from Wisconsin to as far south as Texas, east to Pennsylvania, and west to the Great Plains.<sup>27</sup>

Oak wilt disease is caused by a fungus, *Ceratocystis fagacearum* which invades the water-conducting vessels of the sapwood through fresh wounds or by root grafts connecting healthy and diseased trees. The fungus has been found affecting and causing the death of all our native oaks as well as chinkapin,<sup>9</sup> Spanish and Chinese chestnut,<sup>8</sup> ash,<sup>12</sup> beech,<sup>2</sup> dogwood,<sup>2</sup> hophornbeam,<sup>2</sup> hickory,<sup>2</sup> sassafras,<sup>2</sup> sourwood,<sup>2</sup> and wild cherry.<sup>12</sup>

The symptoms or plant expression to the disease organism tend to vary little throughout the United States. The first symptom observed is a crinkling of the leaves with the leaf stem turning black. Leaves at the top of the tree or towards the tip of lateral branches nearly always wilt first. The affected leaves become dull and somewhat lighter in color

as compared to healthy ones. Upper leaves turn brown at the tips and margins. This produces a sharp line between the healthy tissues and the infected, killed reddish-brown tissue.

This reddish-brown or bronze color progresses downward in the leaf toward the petiole. The affected leaves curl inward with the petiole drooping and turning black. Young leaves may not show the reddish-brown color but may just turn black and drop from the tree. Infected trees may defoliate any time after infection occurs, but usually they defoliate four to five weeks after the first symptoms are observed.

Trees in the red oak group usually die in the first year<sup>23</sup> while white oaks may take years to die.<sup>5</sup>

(Editor's Note: Research conducted by the University of Wisconsin on oak wilt indicates that in some cases white oaks recover after one season of infection. Microscopic examination shows that new wood has been laid down over the infected

(continued on page 47)

## ARBORISTS—NURSERYMEN—LINEMEN—PARK SUPERINTENDENTS—GOLF SUPERINTENDENTS—CUSTOM OPERATORS

### Professional Line of Tools, Clothing, Suppliers (Note samples of popular lines):



#### SAFETY CAPS

Sticks to head, meets impact and penetration Federal Spec. O.S.H.A. approved.



#### FIRST AID KITS

Sturdy steel case, mounting bracket, extensive contents. O.S.H.A. approved.



#### EAR PROTECTORS

Manufactured to Fed. Spec. Engineered for comfort. O.S.H.A. approved.



#### SAFETY LINES

6-ft. (1/2 in.) nylon with two forged steel safety snaps. O.S.H.A. approved.



#### SAFETY SADDLES

Seat type saddle, 3" cotton web belting, double thick, 2" nylon backing. O.S.H.A. approved.

Write for Catalog No. 501

"We can help you meet O.S.H.A. requirements"

EVERY PROFESSIONAL TOOL OR SUPPLY ON HAND FOR PROMPT SHIPMENT

# Karl Kuemmerling INC.

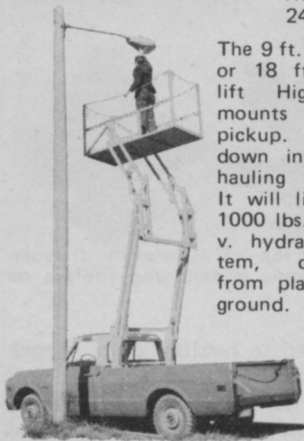
4536 Lincoln Way East, Massillon, Ohio 44646

Tel. (216) 477-3457

# COMPARE QUALITY WITH COST!

9 ft. 18 ft.  
**High Worker**

DOUBLE LIFT WORKING HEIGHT 24 FT.



The 9 ft. single lift or 18 ft. double lift High-Worker mounts in any pickup. Folds down in bed for hauling materials. It will lift up to 1000 lbs. with 12 v. hydraulic system, controlled from platform or ground.

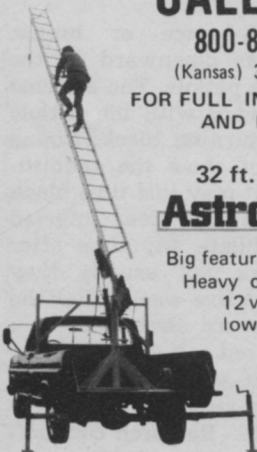
**CALL FREE**

800-835-0563

(Kansas) 316-421-3400

FOR FULL INFORMATION AND PRICES.

32 ft. 45 ft.  
**Astro Hook**



Big features at low cost! Heavy duty hydraulic 12 v. system raises, lowers telescoping boom. 360° radius rotation. Ideal for pickup truck installation. Ladders, stabilizers optional.

**Power Tailgates**



1000 lb. capacity

Low cost 12 v. hydraulic powered tailgate matches truck bed when closed. Heavy duty, 28" x 65" non skid steel. Mounts under truck frame for greater clearance.

"Manufacturers of Quality Truck Equipment since 1959"

Buy direct or through factory authorized representatives

CALL or WRITE

**Adventure Line Mfg. Co.**

3333 Main Dept. WT Parsons, Kansas 67357

## ROPE SAFETY (from page 36)

**WTT:** Let's look at some of the advantages of modern synthetic rope. How does it compare in strength, wearability, temperature, water absorption and use life?

**Liebenauer:** Let's compare a one-inch diameter standard manila rope with a one-inch diameter rope made of polyester filament fibers. Dry tensile strength of manila is 9,000 pounds compared to 22,000 pounds for Dacron and 20,000 pounds for Esterlon. This makes the polyester rope over twice as strong.

In terms of wear, manila is good, but polyester is excellent. It can absorb shock loads far better than manila and the repeat loading characteristics of polyester make it ideal for use in lowering limbs.

Temperature properties of polyester are far superior to manila. A manila rope running quickly through the crotch of a tree will rapidly heat up. It loses strength in the rope as it heats, but you don't see this and think that nothing has happened. Polyester fibers resist high temperatures. The tendency to glaze a tree with a polyester rope will be less because there is less heat generated.

Manila rope is poor in terms of water absorption. It will take up to 100 percent of its weight in water where polyester rope will absorb less than one percent.

Use life of manila rope is generally poor. It's affected by

Even new Esterlon rope makes a knot that holds. Polyester fibers can be flexed many times without damaging the rope.



Manila rope has been the standard among arborists for years. Newer fibers such as Dacron and Esterlon are beginning to replace manila rope.

rot, mildew and other organisms. Polyester rope is essentially 100 percent resistant. Its use life is practically indefinite.

**WTT:** What about color? Does that make a difference?

**Liebenauer:** Synthetic ropes are mostly white, whereas manila ropes have a golden color. The dark brown manila rope has been treated with more oil than a natural manila rope.

I think it is fair to mention at this time that management should insist that the worker give synthetics a fair trial. The men who use this rope should be educated to the fact that synthetic is so superior to manila that they shouldn't consider anything but changing over.

OSHA laws are going to require that a man use this type of rope. I am quite certain that this ruling is coming very soon.

**WTT:** What other advantages are in store for the user of a synthetic rope?

**Liebenauer:** A climber who uses a three-fourths inch manila lowering line will find that a one-half inch synthetic rope will hold the same load. In other words, a man can work with a smaller rope and have greater strength plus the fact that synthetic rope will take repeated loading shock.

A polyester rope used for climbing has a sort of tacky feel on the outside surface. Actually

(continued on page 46)

# NEW FOR SUPERINTENDENTS

## CLEARY'S 3336™ SYSTEMIC TURF FUNGICIDE

Use 3336 for 6 major turf diseases that attack tees, fairways and greens. Prevent recurrence for up to 4 weeks. .3336 controls and prevents such diseases as Fusarium Roseum, Dollar Spot (all types), Red Thread, Copper Spot, Helminthosporium (leaf spot), and Brown Patch. There's no longer a need to wait for the first signs of a disease to appear. Plan your program and prevent diseases by spraying early in the Spring on a systematic schedule.



**PREVENTION  
+ CONTROL**  
**3336™**  
TURF FUNGICIDE

Best results have been obtained with CLEARY'S 3336 when it has been applied as a fungistat - before disease occurs. Weekly sprays on greens through the disease incidence season has resulted in disease-free greens with superior color. Many golf course superintendents have reported excellent disease control on fairways with applications at 3 to 4 week intervals with as little as one ounce per 1,000 sq. feet.

Check with your distributor or write for the nearest available source from W. A. CLEARY CORPORATION, 1049 Somerset St., P.O. Box 10, Somerset, New Jersey 08873 or Telephone 201-247-8000.

Cleary's 3336 turf fungicide is a non-toxic, non-mercurial product.

Note: Presently registered for experimental purposes only.

**W·A·CLEARY**  
CORPORATION  
*"The Company that's going places"*  
SOMERSET, NEW JERSEY

**Help for Iron-Sick Trees**

Easy To Use Trunk Injection

TREE SYSTEMS T.M.  
MEDICAPS  
©Copyright 1972, Creative Sales, Inc.

**SYSTEMIC IRON MEDICAPS**  
correct iron chlorosis fast!!

ECONOMICAL UNIVERSITY TESTED

*Creative Sales, Inc.*  
200 S. MAIN FREMONT, NEBR. 68025

SEE US AT BOSTON • BOOTH #43  
For More Details Circle (134) on Reply Card

## The great dwarf Bluegrass that stands below the rest.

- DEVELOPED IN ALASKA
- LOW CUTTING HEIGHT
- SHADE TOLERANT
- DEEP GREEN COLOR
- HIGHEST ROOT STRENGTH (A HARVESTER MUST)
- HIGHLY WINTER HARDY
- RESISTANCE TO ALL MAJOR TURF DISEASES

DEMAND CERTIFIED NUGGET  
—DIRECT PROGENY OF ALASKAN SEED

**Nugget**

Kentucky Bluegrass

PICKSEED WEST, INC.  
Box 217, Albany, Ore. 97321

For More Details Circle (112) on Reply Card  
46

it is a wax used to lubricate the rope, but this wax gives this tacky feeling and allows a man to hang on to the rope more easily. After the rope has been used a bit it gets a slightly fuzzy surface which makes it excellent to handle. A manila rope after the same amount of use develops little slivers of fiber which can get into a climber's hands.

**WTT: Can you use synthetic ropes in the construction of saddles?**

**Liebenaueer:** This gets back to one of the accidents which I mentioned earlier in our discussion. You recall that a man fell from a tree because his manila rope broke at a knot. Actually this knot was located on the man's saddle where it had been continuously tied since the saddle was constructed. When the knot broke the saddle failed and the man fell. Saddles are made out of leather with a rope reinforcement. In our business we haven't sold a saddle or let our own men use one that had any manila rope in it for over three years. We insist on saddles with synthetic rope reinforcement. Nobody can afford to have an accident.

**WTT: Does synthetic lend itself to leather better than manila?**

**Liebenaueer:** Not necessarily. We have found no difference between the two. The single factor against using synthetics is in braiding the eyes or the temples at the end of the rope. You can't braid synthetic ropes, quite as readily as you can manila. When you finish a braid, you must hold it together with a wire clip and fiberglass tape to keep it from unraveling.

Synthetic rope has a memory. It does not want to have to change in lay other than when it was made. This is the nature of most plastics — they revert back to the original form or twist. We have never had any trouble, however, with a failure where any eye was braided into a synthetic rope.

**WTT: What is the maximum length of life of synthetic rope when used in normal day-to-day operations?**

**Liebenaueer:** We don't know how long they will last. Some of the early users of nylon ropes are still using these ropes. The big-

gest factor affecting the use of synthetic rope is cost. This rope is more expensive. (In the case of accidental cutting with a saw or axe, a climber quickly finds that synthetic rope cuts just as easily as manila.) Synthetic ropes cost between 2½ to 3 times as much as manila rope initially. But at the same time they have 2½ times as much initial strength which remains constant. And the life expectancy is indefinite. So actually it is a better investment.

**WTT: We take it that you are an advocate for synthetic rope. Does this mean that more arborists should be considering this type of rope?**

**Liebenaueer:** More arborists are definitely moving to synthetics. The only resistance is change itself and the fact that some arborists are working on a limited budget and cannot afford the added initial investment. However, the added investment in a period of two years will more than pay for itself. At the end of two years, unless you have physically damaged synthetic rope, it will still be good. Anyone who has used a manila rope over a year is out of their mind. I wouldn't trust it longer than that.

**WTT: You have given us a convincing argument for using synthetic rope. Thank you for your interest and your concern for safety in the tree care industry.** □

## Is Parker Sweeper Booklet "Lawn Grooming Made Easy"

Parker Sweeper Company has prepared an eight-page booklet entitled "Lawn Grooming Made Easy."

The booklet was written for Parker Sweeper by Dr. Robert W. Schery, director of the Lawn Institute.

The booklet contains information on new varieties of grasses and how to cope with common maintenance problems. Reviewed are such areas as fertilization, watering and pest control.

The booklet also gives instructions on how to best use mechanical aids in lawn care, particularly in controlling thatch.

"Lawn Grooming Made Easy" is available without charge by writing Parker Sweeper Company, P. O. Box 720, Springfield, Ohio 45501.

WEEDS TREES and TURF

## TREE DESTROYER (from page 43)

annual ring. The fungus is thus walled off, or "buried" and the tree recovers.)

Little is known about the penetration of the oak wilt fungus into the tree. It has been reported that the fungus probably needs a wound caused by man, insects, animals, weather, or any number of ways to gain entrance into the tree,<sup>10</sup> and that infection can occur through the roots, stems, twigs, buds, leaves or flowers if a wound is present.

The fungus survives the winter by living in the bole of trees infected late in the summer. It later spreads throughout the plant and causes death the next spring; thus, serving as a source of inoculum for reinfection of other trees.<sup>28</sup>

The local spreading of the oak wilt fungus from one infected tree to another is thought to be caused in a great part by root grafts between the oak trees.<sup>4,24</sup> The fungus is also thought to be spread long distances as well as in the localized area by different species of beetles in the Nitidulidae family.<sup>14,20,21,26</sup> It has also been confirmed that the fungus can be spread by mites,<sup>19</sup> wind,<sup>12</sup> squirrels,<sup>15</sup> pomace fly,<sup>3</sup> tools,<sup>17,22</sup> and the fruit fly.

(It should be pointed out that oak wilt can often be confused with anthracnose. Early symptoms of each disease are quite similar. Anthracnose turns lower leaves brown and they curl badly in early June, but the trees are seldom killed. New foliage usually replaces the infected leaves by midsummer. The big difference is that oak wilt usually affects the upper part of the tree first while anthracnose attacks the lower leaves. Additionally, oaks are sensitive to changes in soil levels about their roots. Thus, in areas where new housing exists, trees may appear to have wilt symptoms but may actually be suffering from excavation, soil compaction or soil smothering. Cir. G1693, Oak Wilt In Wisconsin, G. L. Worf and J. E. Kuntz)

An effective control for the oak wilt disease has not been established to date. Local spread of the fungus by root grafts may be controlled to a limited extent by removing all the trees 100 feet on all sides of the diseased tree.<sup>24,25</sup> Killing all trees around an infected tree or trenching around infected trees to a depth that all root grafts between the trees are severed will normally control the local spread of the fungus.<sup>24</sup> A vigorous pruning of infected white oaks has been effective in saving individual trees.<sup>13</sup>

(Editor's Note: Investigative studies are underway to determine whether Benlate benomyl fungicide has activity on oak wilt. Because it is a vascular wilt like Dutch Elm Disease, it is believed that Benlate holds promise in the control of the fungus.)

Due to the slow rate of spread of the oak wilt disease, it does not appear to be of great economic importance. However, given an effective agent to spread the fungus, it has the potential to be of great economic importance. A forest in Illinois of 1800 acres was estimated over a pe-

riod of eight years to have lost a total volume of timber equal to 50 acres of prime red oak.<sup>11</sup> Young,<sup>24</sup> in 1945, reported that at Pilot Knob State Park in Iowa 4,895 oak trees were killed by oak wilt with a resulting 38 percent mortality. Perhaps even more dramatic is the possibility of entire oak populations within a predominantly oak planted community being infected. The result could be more devastating than that created by Dutch Elm Disease.

Therefore, it can be concluded that on the national scale the disease  
(continued on page 49)

## Litterbug Larry

We can't help you with Litterbug Larry.

But if you've got dollar spot, large brown patch, Fusarium blight, Pythium blight, stripe smut and powdery willow mildew, we can help you there.

With Chipco Spot Kleen. A new systemic fungicide that can effectively control these turf enemies. And it does it so well, it controls a lot of turf diseases as well.

Chipco Spot Kleen helps keep your greens (and fairways) in the pink.

Sold for experimental use only in: Ariz., Calif., Conn., Ill., Ind., Kan., Ky., Md., Mass., Mich., Mo., N.J., N.Y., Ohio, Pa., R.I., Va., W. Va., Wisc.

## Chipco® Spot Kleen.

From Rhodia Chipco Products.



"When they shoot, dummy. When they shoot!"



# QUALITY, Performance, Dependability...



**COLT.**  
One word.  
You know it.  
Quality, performance,  
dependability  
are all there.

**JACKLIN.**  
One word.  
Same story.  
Jacklin Seed  
Company  
is one of the world's largest  
producers of bluegrass and  
other grasses, a name synony-  
mous with quality, perfor-  
mance and dependability.  
When ordering seeds, specify  
**JACKLIN SEED.**

**JACKLIN PRODUCES:**  
Merion Kentucky bluegrass  
0217® Brand Fylking  
Kentucky bluegrass  
Nugget Kentucky bluegrass  
S-21 Kentucky bluegrass  
Newport Kentucky bluegrass  
Delta Kentucky bluegrass  
Geary Kentucky bluegrass  
Park Kentucky bluegrass  
Six Kentucky bluegrass  
Troy Kentucky bluegrass  
Norlea Perennial ryegrass  
Public and private varieties of  
Creeping Red, Chewings & Hard fescues.  
And has produced on a contract basis:

Pennfine Perennial ryegrass  
N.K. 100 Perennial ryegrass  
N.K. 200 Perennial ryegrass  
Pelo Perennial ryegrass  
For these quality Jacklin seeds see your  
local wholesale seed distributor. Jacklin is  
also a prime\* contract producer of:  
Warren's A-34 Kentucky bluegrass  
O.M. Scott's Windsor Kentucky bluegrass  
Adelphi Kentucky bluegrass

Jacklin has built a reputation for fine  
quality and service over 30 years. You  
can count on purity of content, high  
quality and sure germination.

\*Available only through breeder and owner outlets.

## Jacklin Seed Company

Division of the Vaughan-Jacklin Corporation

## industry people on the move



**JAMES L. LEVENTHAL**, becomes product manager for Cushman golf cars, turfcare vehicles and Ryan turf equipment for Outboard Marine Corporation. He succeeds **JAMES B. DAHLBERG** who becomes regional manager-Cushman distributor sales in the southeastern United States.

**RICHARD O. GRUNEWALD**, elected marketing services manager for White Farm Equipment Company, a subsidiary of White Motor Corp. He will be responsible for advertising, sales promotion, public relations and product development activities for the company.

**T. G. MORGAN**, appointed product manager in the pesticide department of American Cyanamid Company.

**DR. JAMES C. CAMPBELL** becomes manager of the western research branch laboratory for the agricultural chemical division of FMC Corporation. **DR. IRWYN A. RAMMER** becomes senior research biologist for the company.

**GERALD WEED**, appointed west coast sales manager of Par Ex brand products for Swift Chemical Company.

**ANTHONY J. ADOLFI**, promoted from manager of public relations to director of communications for the agricultural division of Ciba-Geigy Corporation. He will be responsible for advertising and promotion, public relations and merchandising. He succeeds **N. B. DEMANCZUK** who has retired. **RICH G. HANSEN** replaces Adolfi as public relations manager.

**MICHAEL H. SMALL** becomes an irrigation specialist for residential and commercial markets on the west coast for Toro's Irrigation Division. **FRANK E. MOFFETT, JR.** appointed a field service representative for the midwest, based in Chicago. **JOHN Y. MORRIS**, becomes administrative/marketing assistant to **ROBERT LANDESMAN**, divisional manager of market planning and development. Toro says that all three positions are new.

**JERRY O'DONNELL** appointed ProTurf representative in Wisconsin for O. M. Scott & Sons. He was super of Nakoma Golf Club, Madison, Wisc. **MIKE REDMOND**, also a former super at Brightwood Hills Golf Course, New Brighton, Minn., joins the ProTurf group. **DOUG SMITH**, becomes a ProTurf technical representative in southern Indiana and Kentucky. He was foreman in charge of construction and maintenance at Brookshire Country Club, Carmel, Ind.

**JAMES J. GALVIN**, becomes executive vice president of the agricultural chemicals group of W. R. Grace & Co.

**ROBERT HIGBY**, named to the new position of administrative assistant to the general manager at the agchem-decco division of Pennwalt Corporation. **RAY ORITO** becomes controller for the division.

**R. DAVID STILES**, appointed a representative of the F. A. Bartlett Tree Expert Company. He will operate out of the Chattanooga office, a new district office for the company.



## TREE DESTROYER (from page 47)

may not be of great economic importance, but in localized areas it could be very destructive. Should the disease infect timber resources, foresters could salvage the tree for market as the fungus does not destroy the structural qualities of the tree.<sup>6,7</sup>

We have taken a brief look at one disease affecting oaks and a variety of other tree species. Multiply the diseases into the hundreds and add in the hundreds of different species of plants affected by the diseases and the stage is set for a series of events that occur daily wherever trees grow.

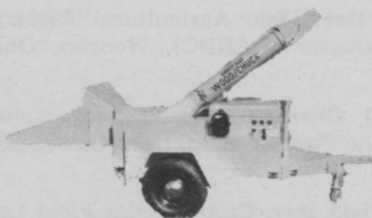
### BIBLIOGRAPHY

1. Anonymous. 1942 Oak Wilt, a fungus disease. In *What's new in farm science*. Wisc Agric Exp Sta Bull 455: 75-6.
2. Bart, G. J. 1957. Susceptibility of some oak species to *Ceratostyis fagacearum*. *Phytopathology* 47: 3.
3. Bart, G. J. and C. L. Griswald. 1953. Recovery of *Endoconidiophora fagacearum* from excrement of insects used in disease transmission studies. *Phytopathology* 43: 466 (Abstr).
4. Beckman, C. L. and J. E. Kuntz. 1951. Translocation of poisons, dyes and radioiodine and its relation to oak wilt. *Phytopathology* 41: 2-3.
5. Boyce, J. S. and K. H. Garren. 1953. Compatibility types of the oak wilt fungus in 23 Appalachian trees. *Phytopathology* 43: 644-45.
6. Bretz, T. W. 1944. Finding of oak wilt in Missouri. *Plant Disease Reporter* 28: 951.
7. Bretz, T. W. 1951. Oak wilt. *Journal of Forestry* 49: 170-71.
8. Bretz, T. W. 1952. New Hosts for the oak wilt fungus *Chalara quercinea* *Phytopathology* 42: 3 (Abstr).
9. Bretz, T. W. 1955. Some additional native and exotic species of *Fagaceae* susceptible to oak wilt. *Plant Disease Reporter* 31: 495-7.
10. Bretz, T. W. 1967. Personal Communication.
11. Carter, J. C. 1950. Oak wilt in Illinois. U. S. Bru Plant Industry. Soils and Agric Engin. *Plant Dis Reporter* 34: 81-2.
12. Curl, E. A. 1955. Removal of spores from mycelial mats and transmission of *Endoconidiophora fagacearum* by air currents. *Plant Disease Reporter* 39: 977-982.
13. Dietz, S. M. and R. A. Young. 1948. Oak Wilt — a serious disease in Iowa. *Iowa Agric Exp Sta Bull* 91.
14. Dorsey, C. K., F. F. Jewell, J. G. Leach and R. P. True. 1953. Experimental transmission of oak wilt by four species of Nitidulidae *Plant Disease Reporter* 37: 419-20
15. Engelhard, A. W., and W. H. Bragonier. 1960. Squirrels as possible vectors of the oak wilt fungus in Iowa. *Plant Disease Reporter* 44: 192-95.
16. Gansner, D. A. 1965. Missouri Forests. U. S. Forest Service Bull CS-2.
17. Hart, J. H. and R. M. Wargo. 1965. Increment borer wounds penetration points for *Ceratostyis fagacearum*. *Journal of Forestry* 63: 38-9.
18. Hepting, G. H., and G. M. Jennison. (1958). *Forest Protection. Timber Resources for America's Future*. U. S. Dept. of Agriculture., Forest Service, Forest Resource Report 14:185-220.
19. Himelick, E. B., and E. A. Curl. 1958. Transmission of *Ceratostyis fagacearum* by Insects and Mites. *Plant Disease Reporter* 42:538-45.
20. Himelick, E. B., E. A. Curl, and D. M. Zuckerman. 1954. Tests on insects transmission of oak wilt in Illinois. *Plant disease Reporter* 38:588-90.
21. Jewell, F. F. 1956. Insect transmission of oak wilt. *Phytopathology* 46:244-57.
22. Jones, T. W. and T. W. Bretz. 1955. Transmission of oak wilt by tools. *Plant Disease Reporter* 39:498-99.
23. Kuntz, J. E. 1950. What's new in oak wilt. *Natl Shade Tree Cong Proc* 26:31-37.
24. Kuntz, J. E., and A. J. Riker. 1950. Root grafts as a possible means for local transmission of oak wilt. *Phytopathology* 40:16-7.
25. McNew, C. L., and R. A. Young. 1948. A study of the causal relationship and control of the oak wilt fungus. *Rep Ia Agric Exp Sta* 185-6.
26. Norris, D. M. Jr. 1953. Insect transmission of oak wilt in Iowa. *Plant Dis Reporter* 37:417-8.
27. Rexrode, C. O., and H. C. Lincoln. 1965. Distribution of oak wilt. *Plant Dis Reporter* 49:1007-10.
28. Thompson, H. E., B. L. Hadley, Jr., and A. R. Jeffery. 1955. Transmission of *Endoconidiophora fagacearum* by spore infected nitidulides caged on wounded healthy oaks in Pennsylvania. *Plant Disease Reporter* 39:58-60.
29. Young, R. A. 1949. Studies on oak wilt caused by *Chalara quercina*. *Phytopathology* 39:425-41.

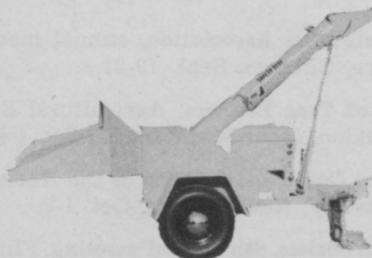
## SAFETY TEST

# WOOD/CHUCK®

### FIRST IN PERFORMANCE, ECONOMY, SAFETY



HEAVY DUTY WOOD/CHUCK



STANDARD WOOD/CHUCK

Both Heavy Duty and Standard Models; Engine Choices Include Diesel.

Safety Test Wood/Chuck chippers are in a class by themselves.

You get superior performance, economy and safety. There's less down-time for blade adjustment and replacement. The Wood/Chuck's blades lock into the rugged rotor and automatically position properly. This takes just minutes for a Wood/Chuck but often requires hours with other chippers. Wood/Chuck's blades are "V"-grooved for full length support that means extra safety. And where most "chippers'" blades are so positioned that chips are actually crushed away . . . the Wood/

Chuck's shallow blade angle slices chips away. Goodbye friction, wasted energy and vibration; jobs go faster, fuel goes farther.

Only the Wood/Chuck has really been built from the ground up as a chipper for heavy-duty use. It's modern, functional, no-nonsense design sets it apart. Above all, the Wood/Chuck has that built-in Safety Test "Extra Measure" of dependability. You can rely on it to do a full day's work . . . day after day, year after year. Frankly, there are dozens of reasons why no other chipper compares with the Wood/Chuck.

**SAFETY TEST & EQUIPMENT CO., INC.**

**P.O. Drawer 400**

**Shelby, North Carolina 28150**

**Tel. (704) 482-7346**

See our demonstration at the Boston ISTC



## Utility gives you the safest high-wire act in the business

### Series LH Fully Powered Aerial Ladders

Available in platform to ground heights of 24'-28'-32'-36'-38'—full 360° rotation.

All steel lower section and rugged fiberglass upper section molded around a 2x4 core of kiln dried Douglas Fir. No yearly maintenance problems. (The fiberglass upper section has an excellent dielectric rating.)

Safety and performance in construction and controls.

Series LH Aerial Ladders—the height of dependability.

For brochure and further information, contact:

**Utility Body  
Company**



901 Gilman Street Berkeley, California 94710  
(415) 524-9333

## — meeting dates —

**South Carolina Turfgrass Conference**, 4th annual, Clemson House, Clemson, S.C., July 10-11.

**Ohio Chapter, International Shade Tree Conference**, summer meeting, Benjamin Wegerzyn Garden Center, Dayton, Ohio, July 11.

**American Association of Nurserymen**, Radisson Hotel, Minneapolis, Minn., July 14-18.

**Hyacinth Control Society**, Hotel Monteleon, New Orleans, July 15-18.

**American Sod Producers Association**, annual summer meeting and field day, Denver, Colo., July 16-19.

**Michigan Pesticide Association**, summer tour, Shanty Creek Lodge, Bellaire, Mich., July 29-31.

**Penn Allied Nursery Trade Show**, Pennsylvania Nurserymen's Association, Allenberry, Boiling Springs, Pa., July 31-Aug. 2.

**USDA Turfgrass Field Day**, Agricultural Research Center-West, Beltsville, Md., Aug. 1.

**Penn State Turfgrass Field Day**, Joseph Valentine Turfgrass Research Center, Campus, University Park, Pa., Aug. 1-2.

**Plant Science Day of the Connecticut Agricultural Experiment Station**, Lockwood Farm, Hamden, Conn., Aug. 8.

**International Shade Tree Conference**, 49th annual meeting, Sheraton-Boston Hotel, Boston, Mass., Aug. 13-16.

**International Pesticide Applicators Association**, annual meeting, Marriott Inn, Berkeley Marina, Berkeley, Calif., Aug. 15-18.

**North Dakota State Horticultural Society**, annual meeting, Canada Department of Agriculture Research Station, Morden, Manitoba, Aug. 21-22.

**Turf and Landscape Day**, Ohio Agricultural Research and Development Center (OARDC), Wooster, Ohio, Sept. 11.

**Midwest Agricultural Chemicals Association**, annual meeting, Lodge of the Four Seasons, Lake Ozark, Mo., Sept. 12-14.

**Michigan Turfgrass Field Day**, Crop Science Field Lab, Michigan State University, E. Lansing, Mich., Sept. 13.

**Lawn & Garden Distributors Association**, annual meeting, Sheraton-O'Hare, Chicago, Sept. 19-21.

**Course for Licensing of Tree Pruners**, Agricultural Extension Centre, Brandon, Manitoba, Canada, Oct. 1-5.

**American Horticultural Congress**, meeting of the American Horticultural Society, New Orleans, Oct. 1-7.

**Society of Municipal Arborists**, 9th annual meeting, Flint, Mich., Oct. 3-5.

**Tropical Plant Industries Trade Show**, sponsored by the Florida Nurserymen and Growers Association, Diplomat Hotel, Hallandale Beach, Fla., Oct. 5-7.

**Southwest Turfgrass Conference**, Albuquerque, N.M., Oct. 11-12.