

Load It With Logs... Then Chew 'Em To Chips

Here's a powerful, all-hydraulically operated unit that fits right in with today's modern emphasis on environmental control... Vermeer's New 671 Log Chipper. Eliminates tree and log disposal problems quickly, safely, economically. Load it with logs, old lumber, railroad ties, decayed telephone poles; then chew 'em to chips in minutes for valuable mulch, bedding, ground cover, erosion control, etc. The 671 Log Chipper... great for cities, parks, landscapers, contractors, utilities and tree service firms everywhere. Write for more information and complete literature. Better yet, ask for a free demonstration.



7211 W. Washington

Pella, Iowa 50219

For More Details Circle (114) on Reply Card



It's automatic! Just load any log or piece of wood—up to 4' wide, 6' long—into the hopper... where carbide-tipped cutting teeth chew it to chips in minutes. Handy conveyor then deposits chips in truck for easy disposal.

sod industry. It had been suggested from time to time by various sod growers, but never given serious consideration.

The result of this investigation is the current plan to initiate action in developing a marketing order. I have found a positive response in about 80 percent of the sod growers in Michigan to the concept.

There are presently 134 marketing orders in effect throughout the United States. Some are extremely successful, others are not so successful. The degree and speed of success appears to be determined by the extent to which the particular commodity's market had deteriorated before the growers initiated the marketing order.

The outlook for the sod industry may appear to be good for the next

two or three years, but it will only take one good year to stimulate production which will soon outstrip demand. Already some large farms are doubling their production in anticipation.

We are acting at a time when the prospect of over extreme supply is still ahead of us. By establishing controls now, at a time when the market is expanding naturally, the chances of a successful marketing order are greatly enhanced. The Market Development Program would be able to insure against any reductions in allotments, no matter what turns the economy takes, and increased production would be indirectly increased by the anticipated demand.

This business of fighting and squabbling among ourselves is a

waste of time and money. We must come together and with a united effort get about the business of selling sod. The marketing order is a tool that we can use to sell sod. The time for the marketing order is now.

EDITOR'S NOTE:

At presstime the Sod Growers Association of Michigan have presented James Coddington, USDA Consumer and Marketing Service, with a proposed marketing order. Pending review by the legal department, an acceptable version will then be presented to all interested parties.

Discussion of the proposed order is scheduled in Parlor C, Union Building, Michigan State University, December 6, 1972 at 9 a.m. The meeting will be sponsored by the Sod Growers Association of Michigan and the Michigan Cooperative Extension Service.

According to Tony Tashnick, SGAM secretary, the program is to educate sod producers and handlers as to the contents of the marketing order so they may intelligently represent themselves at the official public hearings to be called by the Secretary of Agriculture, USDA. Tentative date of the public hearings is late January.

All U.S. sod growers are invited to attend the educational meeting. For reservations, contact Tony Tashnick, SGAM secretary, 60 Rush Lake Road, Pinckney, Michigan 48169. Phone (313) 878-3347.

For fastest-starting turf



PARK Variety Kentucky Bluegrass

More Park is seeded each year in the U.S. than any other certified variety of bluegrass.

The 1972 seed crop is the best ever. We recommend that you order your supplies early.

Available exclusively from

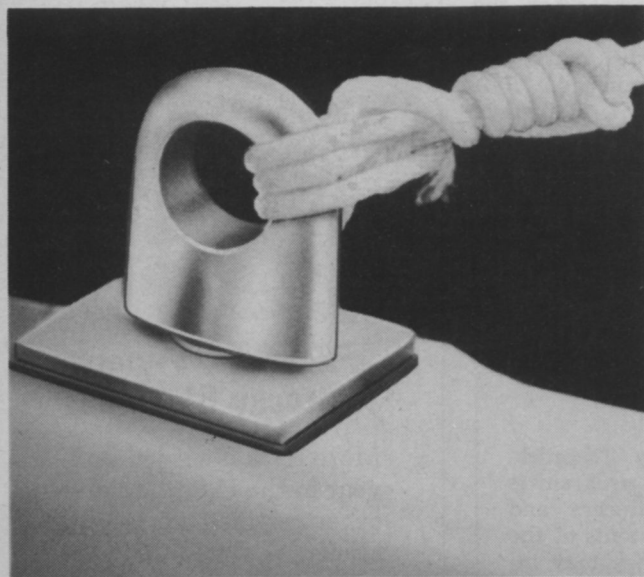
TWIN CITY SEED CO.

500 30th Ave. N.E., Minneapolis, Minn. 55418
Phone (612) 789-8821



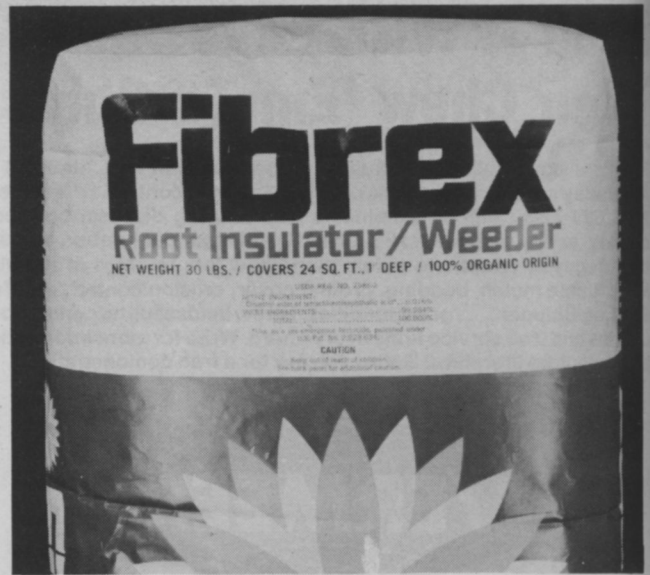
WHIP-END DIP: Marine Development & Research Corp., Freeport, N.Y.

Seal any thickness rope end from ¼ inch to 5 inches with this new liquid vinyl compound. It automatically sets into tough, flexible and permanent rope end seals for only pennies per application. One application is all that's needed. Ideal for arborists and other tree men who regularly use ropes. Resistant to gasoline, oil, grease, alcohol and even acids. Works well on all types of rope such as manila, nylon and polyethylene. Can also be used to seal electrical connections. For more details, circle (701) on the reply card.



UNIVERSAL TIE DOWNS: Albert R. Norton Products, Oakland, Calif.

Sturdy, flexible and economical. Tie downs made from machined steel and chrome plated for beauty and long life. Just what every owner of a pickup truck needs to keep the load tied down. These units are installed in minutes. No special tools or skills are required. Eye diameter is one inch. When the tie down is set in stake hole and tightened, the rubber expansion washer expands inside the bed wall to securely lock it in place. Available in sets of two tie downs. For more details, circle (703) on the reply card.



FIBREX ROOT INSULATOR/WEEDER: Masonite Corporation, Chicago, Ill.

Here's a decorative bark ground cover with a weeder added. Treated with DCPA, this decorative bark is registered for use as a ground cover around trees, shrubs, ornamentals and other desirable vegetation. It protects plant roots from extremes of heat and cold, stops soil splashing and washing and doesn't "tie up" nitrogen in the soil. The product comes in a striking tear-resistant plastic bag that "breathes." One 2-cubic-foot bag covers 24 square feet at a recommended 1-inch depth. Early application in the growing season provides season-long weed reduction and protects plant roots from extreme summer heat. In winter, this insulating cover raises root-zone temperature above air temperatures and lessens the risk of freeze damage. For more details, circle (702) on the reply card.



LOADER-BACKHOE: Ford Motor Company, Troy, Mich.

Model 3550 tractor-loader-backhoe combines increased horsepower and digging capability with proven performance and dependability. Features include a new 50 Hp diesel engine and the availability of a heavy-duty 15 foot backhoe. The 3550's three-quarter cubic-yard loader has a height reach of 10½ feet, 3,050 pounds of lift capacity and 4,360 pounds of breakout force. General, light material, and stockpile buckets are available. Operators have three transmissions from which to choose. An optional three-point hitch supplies 2,000 pounds of lift capacity 24 inches to the rear of lower-link points. For more details, circle (704) on the reply card.

TELL ME MORE

This page is provided for your convenience. To obtain additional information on new products, trade literature and advertised products in this issue, simply circle the corresponding number on the perforated card below, fill in your name, business address and mail the card. No postage is required.

FOR MORE INFORMATION FILL OUT AND MAIL TODAY!

ADVERTISED PRODUCTS

102	103	104	105	106	107	108	109
111	112	113	114	115	116	117	118
120	121	122	123	124	125	126	127
136	130	131	132	133	134	135	136
143	139	140	141	142	143	144	145
152	148	149	150	151	152	153	154
161	157	158	159	160	161	162	163
170	166	167	168	169	170	171	172
181	175	176	177	178	179	180	181
190	184	185	186	187	188	189	190
199	193	194	195	196	197	198	199

ADVERTISED PRODUCTS

708	702	703	704	705	706	707	708
717	711	712	713	714	715	716	717
726	720	721	722	723	724	725	726
735	729	730	731	732	733	734	735
744	738	739	740	741	742	743	744

Please send more information on items circled

(Please type or print)

11/72

Name

Position

Company

Street

City

State Zip Code

Please describe your type of business

Note Inquiries serviced until January 20, 1973

Use this convenient card if you wish to receive further information on products and services advertised or described in this issue.

BUSINESS REPLY MAIL

NO POSTAGE STAMP NECESSARY IF MAILED IN THE UNITED STATES

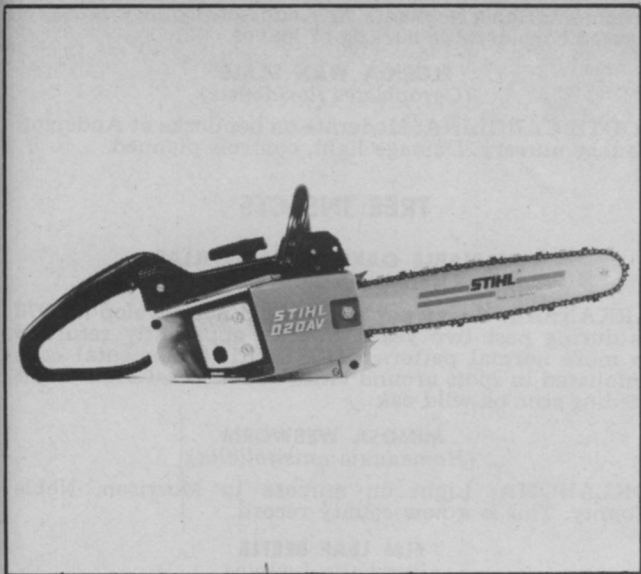
postage will be paid by

**WEEDS
TREES
and TURF**

POST OFFICE BOX 6049
DULUTH, MINNESOTA 55806

FIRST CLASS
PERMIT NO.
DULUTH, MINN.





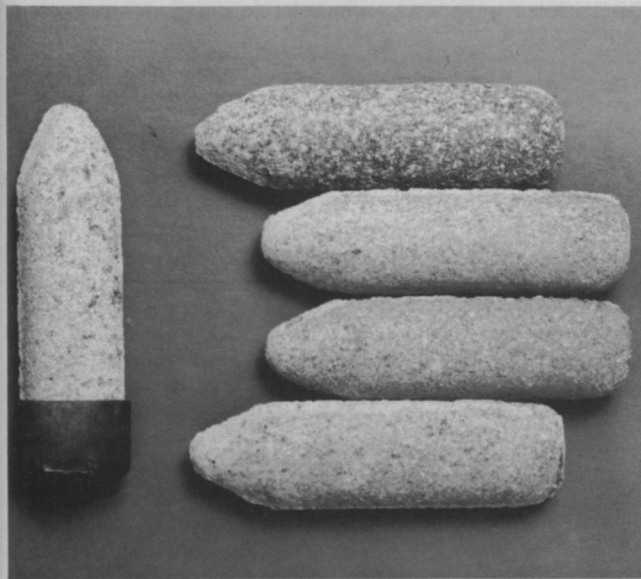
PRO-GRADE SAW: Stihl American, Inc., Midland Park, N.J.

Here's a powerful lightweight saw designed specifically for the professional user. It is the 020AV-P, a slightly modified version of the popular 020AV model. The pro-saw has a safety hand guard and an elongated wrap-around handle, well-centered for superior balance. Another feature is the safety-recessed muffler which will make tree climbing saw men happy by preventing muffler burns. Standard equipment is the exclusive oilamatic-type chain and the built-in anti-vibration system. For more details, circle (705) on the reply card.



WALK-BEHIND POWER BROOM: Jenkins Equipment Co., Dexter, Mich.

Model C-36 Sweepster is a push broom, snow shovel, hand rake and pitch fork all in one. Wherever a vigorous sweeping action is required, the easily transportable C-36 can be used. The 36 inch wide polypropylene brush has two speed ranges. The slower speed is used for indoor sweeping where blowing dust and flying debris are objectionable. The higher speed is used outdoors where up to 5 inches of snow, thatch, and other debris can be swept. The unit is self-propelled. Brush can be angled by fingertip controls. Brush is 26 inches in diameter, comprised of 20 individual discs and 19 spacers. A 5 HP gas engine with recoil starter and throttle control powers the rotary broom. Net weight is 235 pounds. For more details, circle (706) on the reply card.



TREE FOOD: Jobe's Tree Food Spikes, Lexington, Ky.

Impress your customers with this new concept in tree fertilization. Tree food spikes are compacted fertilizer in a 16-8-8 analysis. Approximately one-third of the nitrogen is a long-lasting ureaform. The spikes come with a rubber cap to put on their head, for pounding into the ground. Rain-water does the rest. Thoroughly tested, the tree food spikes are reported to be "3 times faster" to use than prior methods for fertilizing trees. In addition, university tests have determined that the fertilizer reaches the root zone as fast as any other method used. For more details, circle (707) on the reply card.



MOBILIFT: Pitman Manufacturing Co., Div. A. B. Chance Co., Grandview, Mo.

Mobilift is a fully articulated aerial device that mounts on trucks as small as 54 inches (cab-to-axle). It's available in 24 and 28 foot ground-to-bucket floor heights, with steel booms only on the 24 footer and a choice of steel or Epoxi-glas insulated upper boom on the 28 foot model. The unit is stable without outriggers. It can put 300 pound bucket payloads where the work is when larger units can't even get to it. Bucket controls are within easy reach of operator and have a protective guard to prevent accidental acuation. This unit is ideal for the arborist who cares for younger urban trees. For more details, circle (708) on the reply card.



—insect report—

TURF INSECTS

RHODESGRASS SCALE (*Artonina Graminis*)

ARIZONA: Heavy in some Bermuda grass lawns in Salt River Valley, Maricopa County.

BLUEGRASS BILLBUG (*Sphenophorus Parvulus*)

NEBRASKA: One bluegrass sod field near Omaha, Douglas County, with 86 adults and 3 larvae in 5 square feet noted.

GRANULATE CUTWORM (*Feltia subterranea*)

OKLAHOMA: Heavy in experimental bentgrass plot in Payne County.

NORTHERN MASKED CHAFER (*Cyclocephala borealis*)

OHIO: Larvae common in fairway turf of Wayne County golf course.

INSECTS OF ORNAMENTALS

LACE BUG (*Stephanitis takeyai*)

PENNSYLVANIA: Adults collected from 8 *Pieris* sp. September 6 at a small nursery in Berwick, Columbia County. This is a new county record.

GREEN PEACH APHID (*Myzus persicae*)

SOUTH CAROLINA: Heavy on terminal branches of

ornamental cherry plants in Anderson County nursery. Caused considerable curling of leaves.

FLORIDA WAX SCALE (*Ceroplastes floridensis*)

SOUTH CAROLINA: Moderate on hemlocks at Anderson County nursery. Damage light, controls planned.

TREE INSECTS

VARIABLE OAKLEAF CATERPILLAR (*Heterocampa manto*)

ARKANSAS: Heavy populations did not develop in 1972 as during past two years. Species apparently returned to more normal pattern. MISSOURI: Ornamental oaks defoliated in spots around cities in southeast area. Light feeding seen on wild oak.

MIMOSA WEBWORM (*Homadaula anisifoliella*)

OKLAHOMA: Light on mimosa in Morrison, Noble County. This is a new county record.

ELM LEAF BEETLE (*Pyrrhalta luteola*)

ARIZONA: Almost completely defoliated Chinese elms in Prescott area of Yavapai County. COLORADO: Larvae and adults of second generation caused severe defoliation of Chinese elms in Mesa, Delta, and Montrose Counties. GEORGIA: Caused heavy damage to elms in Houston County.

FALL WEBWORM (*Hyphantria cunea*)

TENNESSEE: Caused heavy defoliation of hardwood trees in Davidson and surrounding counties. NEW MEXICO: Heavily damaged many shade trees in Dona Ana County. Larvae moved into houses and became nuisance.

TWIG GIRDLER (*Oncideres cingulata*)

OREGON: Appears much heavier in northwest area than in past years.

Grounds Management Society Announces News Officers

In an unprecedented election of the Professional Grounds Management Society, president J. Paul Barefoot, vice president Allen W. Hartley and treasurer Charles L. Hall, Jr. were re-elected. Election results were announced at the 58th annual meeting of the Society in Washington, D. C.

According to Robert C. LaGasse, executive director, the re-election of President Barefoot reflects the trust and confidence of the entire membership in the outstanding work of its officers in realigning the organization to service the needs of professional grounds managers throughout the nation.

Barefoot, in his installation address, stressed the need for continued efforts to unify and produce a single voice for the industry that can be heard across the nation calling for an upgrading of the profession, public recognition of the profession's contribution to society, and overall improvements of man's environment through better care and maintenance practices.



The Virginia Turfgrass Council presented a check for \$1,000 to Virginia Tech for use in furthering turf management programs in the department of agronomy. The check was presented to James E. Martin, left, dean of the College of Agriculture and Life Sciences by Earl H. Odell, right, secretary-treasurer of the Virginia Turfgrass Council. Donor is J. L. Kidwell, center, council president and president of the J. L. Kidwell Landscape Corp.



BOSTON '73

You are cordially invited to attend the GCSAA 44th Annual International Turfgrass Conference and Show in Boston, Massachusetts, January 7-12, 1973.

Good turf is just as important as good golfing techniques in keeping scores low. This is your once-a-year opportunity to learn how to make your club a real winner.

At this year's Annual GCSAA Conference over 50 well-known experts will set a busy pace for the 4½-day educational program. Golf course superintendents will hear about the latest turfgrass developments and management practices, participate in discussions on timely subjects of the profession, receive reports on practical day-to-day, problem-solving solutions.

You'll also find answers firsthand to new time- and labor-saving equipment directly from the suppliers. More than 100 exhibitors will display the latest and best in materials, machines and supplies.

More important, this is the unique occasion when you can get together with leading golf superintendents from the top clubs to compare notes, exchange ideas, "talk shop."

44th INTERNATIONAL TURFGRASS CONFERENCE AND SHOW

JOHN B. HYNES CIVIC AUDITORIUM — BOSTON, MASS.

JANUARY 7-12, 1973

Sponsored by the

GOLF COURSE SUPERINTENDENTS ASSOCIATION OF AMERICA
3158 Des Plaines Avenue, Des Plaines, Illinois • 312/824-6147

Registration Fee:

GCSAA Members \$15 • Nonmembers \$35 • Ladies \$15

Send in for your registration form now. By registering in advance you will save time at the registration desk in Boston, where a distinctive badge and your other conference materials will be awaiting your arrival.

Last name

First Name

Mailing Address

City & State

Zip Code

Club or Firm

For More Details Circle (105) on Reply Card

APPLICATOR USE LAWS (from page 11)

the law governing sale, use and transportation of herbicides where it relates to custom applicators.

UTAH

The Economic Poison Application Act of 1951 is still applicable. It requires applicators to be licensed unless a custom applicator is compensated less than \$50 per year. The application form must also list the equipment or devices used in custom application. The board of agriculture may issue a license without examination to a nonresident licensed in a state having substantially the same provisions as the Utah Act. The Utah Pesticide Control Act, a new legislation approved March 22, 1971 authorizes the commissioner of agriculture to license dealers selling restricted use pesticides.

VERMONT

This is another state where there are no exemptions from the licensing law. Vermont has three classes of pesticides. Class C pesticides (low concentration, less hazardous pesticides commonly sold at retail) are now subject to be sold only by licensed persons. The law currently states that all classes of pesticides may now be sold only by licensed dealers.

VIRGINIA

Currently there is no pesticide use and application law on the books. However, the Virginia Pesticide Law, an economic poison act, incorporates sections authorizing the commissioner to restrict or prohibit the sale or use of economic poisons, and makes it unlawful to use a pesticide contrary to label directions, or to the regulations of the board of agriculture and commerce.

WASHINGTON

A pesticide applicator's license is required. Under the Washington Pesticide Application Act the director is authorized to classify licenses as pest control operators, ornamental sprayers, agricultural crop sprayers and right-of-way sprayers, with separate classifications of ground, aerial, or manual application, House Bill No. 636-X, approved May 20, 1971 amends this Act. One change is provision of authority to re-examine pesticide applicators when new categories or new knowledge make such retesting advisable.

WEST VIRGINIA

No pesticide use and application law is in effect.

Service Training Program Announced By Jacobson

A new series of service training courses for golf and park maintenance personnel has been announced by Jacobsen Manufacturing Company for its newly expanded Product Training Center in Racine, Wis.

The schedule is a part of a new curriculum disclosed by Ron Wiltsey, product training supervisor, which also includes sessions for service

men from both turf and consumer distributors as well as service station and dealer service personnel.

Courses for golf course and park maintenance people will begin January 15th, with the final class starting April 9. These three-day sessions include engine tear-down and theory, reel mower grinding, transmission, clutches, hydraulics and practical work involving turf equipment.

Three classes will be held for turf distributor service personnel starting

However the Pesticide Act of 1961 (Economic Poison Law) and the Interagency Pesticide Committee Act are currently applicable. The latter is an advisory committee, without administrative or operation authorities or responsibilities. It's duties are to review current use of pesticides, review state pesticide programs, consider problems arising from pesticide use, recommend pesticide control legislation to the governor, and advise on and approve all programs involving use of pesticides on state property.

WISCONSIN

No pesticide use and application law, currently. Relevant laws include the Pesticide Law (Economic poison law) and the Pesticide Review Board. The latter creates a board and defines authority. The department of natural resources may also adopt rules pertaining to the use of pesticides, but such rules are not effective until approved by the board. Likewise, the department of agriculture may adopt rules to govern the use of pesticides and to determine the times and methods of application and other conditions of use. These rules are not effective until approved by the board.

WYOMING

No pesticide use and application law is in effect. But, an Aerial Spraying statute requires annual registration of all aerial applicators, keeping of certain records of each application, specific safety devices on aircraft, etc. Also, provisions of the Wyoming Pesticide Law are applicable to applicators.

PUERTO RICO

It is unlawful to engage in the application of pesticides for profit unless licensed by the secretary of health. Nonresidents must be licensed under "An Act to regulate the commercial application of insecticides and/or economic poisons in Puerto Rico." Licenses are issued after written exam is passed. Renewal must be accompanied by a certification that pesticides to be used will be only those registered by the department of agriculture, proof that all supervising employees have experience, ability, and skill in applying pesticides, proof of insurance and payment of the fee for renewal (\$10).

VIRGIN ISLANDS

No pesticide use and application law at presstime. Regulations have been issued under authority of the Virgin Islands Code relating to insect and pest control. Permits are issued when the commissioner is satisfied that the applicant is qualified.

in mid-October. In addition to service, these classes also include instruction on conducting similar service training programs in the field.

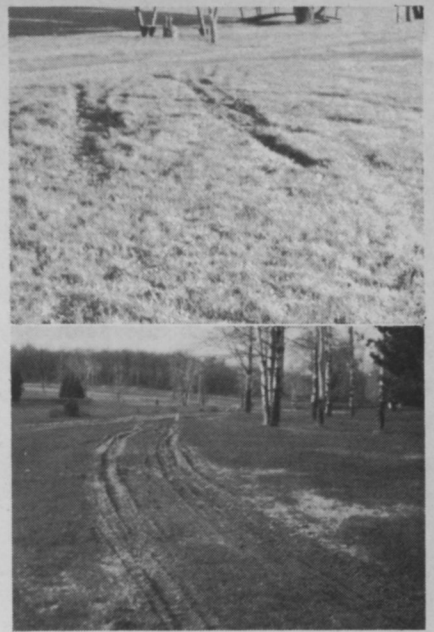
The recently-expanded Jacobsen Product Training Center includes a workbench classroom, a well-equipped audio-visual lecture room and a modern kitchen for convenience lunches.

For detailed brochure write: Product Training Center, Jacobsen Manufacturing Company, 1721 Packard Avenue, Racine, Wisconsin 53403.



Super Duals Protect Turf At Memory Gardens

By **MICHAEL LILLIS**
Memory Gardens, Albany, N.Y.



Author (left) measures the width of the super duals. Even when loaded, truck floats over turf. (Above) Ruts tell the before story.

MAINTENANCE of cemetery turfgrass has become an important aspect with the introduction of the new memorial type cemeteries. Judicious landscaping, well-manicured turfgrass and a quite, dignified surroundings lend to the beauty and serenity which bereaved families and friends desire.

Ground maintenance personnel must take every precaution to protect this great asset, yet it still represents a problem, particularly in the north country. Winter, spring and fall heaving, traffic on turf and dirt removal can play havoc with a turfgrass seedbed as well as a turfgrass stand.

Nearly every device imaginable has been contrived to eliminate destruction of turf. Chapels have been erected to minimize the traffic of the diggers, tent equipment, trucks, loads of sand, and vault trucks going into the area.

Large balloon or terre-type tires on all machinery traversing turf are being used to protect and minimize turf damage. At Memory Gardens, we have been concentrating on this feature and to date the results have been fantastic.

We have further found that dirt hauled to and from the gravesite can be placed in a Ford F-350 dump. The approximate one yard dump body, the seven and one-half thousand pound capacity rear axle and the 560 c.i. engine, all work into an unbeatable combination for our purposes. Except for a couple of problems.

The standard 4:10 rear axle gear ratio has proved to be too high in parts of our "rolling terrain," especially with a full load. Add bad weather, snow, ice, mud and hills and it sometimes becomes quite a job getting an unloaded truck to the gravesite.

This problem had been anticipated when the truck was purchased and we installed single 12x16.5 tires (called supersingles) on the rear to replace the original standard duals. This greatly improved traction and floatation. However, it did nothing for the turf. Three clutches and several thousand dollars in damaged turf convinced us that something must be done.

After talking with the driver and mechanic we decided that the truck needed a lower rear axle gear ratio, a posi-traction rear axle and much larger tires.

The rear axle parts were easily installed. But where could we find tires? We thought of aircraft tires, tractor tires and other off-the-road types.

We had previously eliminated turf damage problems with the backhoe by purchasing a 4-wheel drive unit. Thus, when one of the backhoe operators suggested adapting four of the super singles to the rear and two to the front of the truck, we decided to investigate the possibility.

A Goodyear Tire and Rubber Company spokesman notes that the original equipment duals that came on the truck had 40 square inches of tire on the ground at the end of each axle. With a load of 2440 pounds, the downward pressure would be 60 psi. Changing to the 12 x 16.5 super single on each axle would have the effect of increasing the weight distribution over about 65 square inches and reducing the downward pressure to less than 20 psi. Adding dual super singles to each rear axle would double the surface area to about 130 square inches per axle, thereby further spreading the downward weight distribution.

When those tire and rim manufacturers with whom we checked considered dual hubs for 12 x 16.5 a near impossibility, we decided to make them ourselves. It was our luck that the cone shaped centers of the stock dual hubs fit into the 12 x 16.5 rims. With longer lug bolts and a two-inch spacer on the hub between the wheels, we engineered a super truck with fantastic floatation and unbelievable traction.

Goodyear additionally points out that tire pressure for this off-the-road vehicle may be dropped to a recommended 30 pounds for even more floatation.

The net effect of the dual super singles on the rear and super singles on the front of the truck has been a reduced turf maintenance budget, no cracked granite bases, no bent memorials, and no complaints.

Admittedly, the tire acquisition cost has at least doubled. But the increased savings of turf destruction and an almost 70 percent reduction in downward pressure per square inch have more than offset the tire investment in quality turf year-around at Memory Gardens.

GCSAA Turfgrass Showcase Slated for January 7-12

"The Golf Course Superintendent And Changing Times" has been selected as the theme of the 44th annual GCSAA International Turfgrass Conference and Show. Dates of the convention are January 7-12, 1973.

This year's meeting and show will be held in Boston at the John B. Hynes Civic Auditorium and the Sheraton-Boston Hotel.

The educational portion of the convention has been divided into seven assemblies. Assembly themes include: Time for a change; Legislative changes and the golf course superintendent; Superintendent tournament responsibilities: before, during, and after; Changes in putting green construction concepts; Changes affecting turf management practices; Changes in automatic irrigation concepts; Changes in demand for superintendents; and, Changes and the thinking superintendent.

Delegates will have an opportunity to hear the latest information on "OSHA and Golf Maintenance Operations" in a speech by John J. Spodnik, superintendent, Westfield Country Club, Westfield Center, Ohio. And "Noise Levels and Golf Maintenance Operations" will be discussed by Roger J. Thomas, marketing manager, Jacobsen Manufacturing Co., Racine, Wisc. In addition, a full-scale equipment display will feature the latest in turf care machinery.

Keynote speaker for this year's gala is Dr. Harvey C. Hahn, pastor emeritus, Otterbein United Methodist Church, Dayton, Ohio.

All educational assemblies will be held in the main ballroom of the Sheraton-Boston with the exception of the opening session. It is scheduled for the J. B. Hynes Civic Au-



The 20th annual judging of the National Landscape Awards Program was held in Washington, D.C. with 22 projects being chosen to receive Awards and 24 singled out for Certificates of Merit from a field of 176 entries. Shown during the day-long judging are (from the left): Michael Pirich, landscape architect, Ft. Lauderdale, Fla.; Joan Lee Faust, Garden Editor, *New York Times*; and Darwina Neal, landscape architect, National Park Service; who served as this year's judges. The Landscape Awards Program is sponsored annually by the American Association of Nurserymen and is recognized as the nation's oldest and most honored landscape improvement and beautification award program.

ditorium (main floor), adjacent to the hotel.

This year's meeting promises to hold much potential for the modern golf superintendent. For advanced registration, write, GCSAA Headquarters, 3158 Des Plaines Avenue, Des Plaines, Illinois 60018.

Gas Engine Market To Double In 5 Years

After market requirements for Kohler engines and parts will more than double in the next five years, says J. M. Roenitz, Kohler Co. sales manager, engine distributors.

Speaking at the annual Engine Service Association meeting at

Scottsdale, Arizona, Roenitz stated that Kohler's after market sales five years from now will be up 120 per cent over 1972.

The forecast, he noted, is conservative. In the last five years, Kohler's annual after market sales climbed more than 160 per cent.

"What this amounts to," Roenitz said, "is an explosion in after market business—the direct result of strong O.E.M. sales and a rapid increase of Kohler engines in the field."

Roenitz told distributors at the E.S.A. meeting that Kohler Co. has opened a highly-automated parts handling warehouse to speed shipment of service engines and parts to its world-wide distributor organization.

THIS WAS NOT DISCOVERED!...
but is a product of man's ingenuity

Adelphi
KENTUCKY BLUEGRASS
(U.S. Plant Patent No. 3150)

MAN-CONTROLLED BREEDING
gives it **DARKER GREEN COLOR** and
HIGHER TEST RATINGS for QUALITY
& **PERFORMANCE THAN ANY OTHER**
BLUEGRASS currently in widespread use!

For details, contact:

J & L ADIKES, Inc., Jamaica, New York 11423
JONATHAN GREEN & SONS, Kearny, N.J. 07032
NORTHRUP, KING & CO., Minneapolis, Minn. 55413
VAUGHAN'S SEED CO., Bound Brook, N.J. • Downers Grove, Ill.



SPRAY SERVICE FOR SALE



- 1500 gallon stainless steel tank divided into three 500 gallon tanks.
- Three reels, hoses and guns with electric forward and reverse reel.
- Economical four cylinder diesel to run 80 gallon per minute pump.
- Double plumbed for separate pump.

Four times per year contracted customer route, located in west Portland, Oregon. Will continue in pruning and shaping business, but will work closely with the spraying operation for buyer. Will consider working partner. Asking \$55,000; Terms.

Write or call: **Bill Bailey**

P.O. Box 25273, Portland, Oregon 97225

(503) 292-6363

— classifieds —

When answering ads where box number only is given, please address as follows: Box number, c/o Weeds Trees and Turf, 9800 Detroit Ave., Cleveland, Ohio 44102.

Rates: "Position Wanted" 10¢ per word, minimum \$3.00. All other classifications 20¢ per word, minimum \$4.00. All classified ads must be received by Publisher the 10th of the month preceding publication date and be accompanied by cash or money order covering full payment. Bold-face rule box: \$25.00 per column inch.

SEEDS

SOD QUALITY MERION SEED for discriminating growers. Also Fylking, Delta, Park, Newport, Nugget and Pennstar bluegrasses as well as fine fescues. We will custom mix to your specifications. Michigan State Seed Company, Grand Ledge, Michigan 48837. Phone 517 627-2164.

MISCELLANEOUS

TREE APPRAISALS, SURVEYS, loss evaluations and expert consultation services. For names of members of the American Society of Consulting Arborists, Inc., throughout the country, contact: Executive Director ASCA, 12 Lakeview Ave., Milltown, New Jersey 08850.

LANDSCAPE DESIGN KIT 37 rubber symbol stamps and ink pad, postpaid \$25.00 C.O.D. \$26.00 plus postage. Order direct or brochure sent. California add tax. T-Gordon's, Box 741T, Reseda, Calif. 91335.

USED EQUIPMENT

FULL LINE OF USED TREE equipment for sale. We accept trade-ins and buy used tree equipment. New service available for northern Ohio. We now rent skyworkers, tree spades, brush grinders, 84' National crane, stump grinders and wood splitters. Edwards Tree Service, 3190 Cooper Foster Park Road, Vermilion, Ohio 44089. Phone: 216 967-6750 or 933-6750.

ONE 1970 Chevy Chassis. 26,000 actual miles. 50' Skyworker Bucket with dump box. Very good shape. Unit just worked over at factory. Will sell with or without 1972-12" Mitts-Merrill Chipper. Model #M-12. For price call 419 927-9752.

New California Facility Erected By F.E. Meyers

Plans for the construction of a new 15,000 square foot warehouse light assembly and dealer training center in Visalia, California, have been disclosed by The F. E. Meyers & Bro. Co. Announcement of the expansion move was made by W. D. Miller, Myers executive vice-president.

The plant site, consisting of five acres, is situated in an industrial park 40 miles south of Fresno. Construction is slated to start immediately with completion scheduled within the next 90 to 120 days, Mil-

WANTED—Turf tractor, Ryan Ground Groomer, Ryan Sod Cutter HD18, and rider roller. Tischler Grass Farm, 4206 Medical Parkway, Austin, Texas 78756. Phone 512 453-7291.

1969 ASPLUNDH V-8 16" chipper, \$295.00. Ohio Chipper & Equipment Co., Mentor, Ohio 44060. Phone 1 216 255-5144.

BUSINESS OPPORTUNITIES

WANTED: Manufacturer to build and sell a small tractor unit for golf course greens. A new concept in greens maintenance. Machine is presently in the field running as a Tri Plex greens mower. Designed and developed by a Golf Course Supt. Have Patent Pending. Interested in outright sale or royalty. Contact Frank E. Ekas, 851 Ekastown Road, Sarver, Penna. 16055. Phone 412 353-1142.

FOR SALE

DOUBLE EDGE sod cutter blades. Will fit any Ryan sod cutter. Works like double edge razor blade. Cuts much more sod per blade. Made to bolt on both ways. \$24.00 plus postage. New automatic sod loaders for direct loading to pallets, trucks or trailers. No workers needed on ground. Both products developed and designed by Hadfield. Write or call Glen Hadfield, 4643 Sherwood, Oxford, Michigan 48051. Phone 313 628-2000.

CHAIN SAW CHAIN, bars, sprockets, sharpening equipment, saw parts and accessories. Save to 40%. Professional quality, fully guaranteed. World's largest mail order supplier of this equipment. Free catalog. Write Zip-Penn, Box 43073-A68, Middletown, Ky. 40243.

THE GOLD ONES from D. J. Andrews, Inc., Stump cutter teeth, pockets, and bolts. Top quality and best price in the U.S.A. D. J. Andrews, Inc., 17 Silver St., Rochester, N.Y. 14611. Call 716 235-1230 or 716 436-1515.

EDUCATION-BOOKS

LEARN AUTOMATIC IRRIGATION. Easy to follow text and diagrams on latest valves, heads, controllers. System design, operation and trouble shooting. Write for free

ler said.

"This move is fully in keeping with Meyers long range objective to work more closely with our dealers in key market areas to improve customer service and to achieve more economical distribution of our product lines," he said.

The company's full line of pumps and water systems, water conditioners, power sprayers, hydraulic sewer cleaners and mobile industrial cleaners will be distributed from the new facility, according to Miller. The training facilities to be included in the new structure will be used to acquaint dealers with Myers products.

—Advertiser's Index—

Ackley Mfg. Co.	21
Adelphi Kentucky Bluegrass	38
E. I. duPont de Nemours & Co., Inc.	4th cover
Ford Tractor & Implement Operations	2nd cover
The Golf Superintendent	35
Hahn, Inc.	22-23
Jacklin Seed Co., Inc.	4
Mobil Aerial Towers, Inc.	25
National Mower Co.	41
Niagara Chemical Div., FMC Corp.	6
Orline (Market Time Inc.)	8
Pennfine Perennial Ryegrass	19
Servis Equipment Co.	15
Twin City Seed Co.	31
Vermeer Mfg. Co.	31

outline on this ten lesson low cost course. Larson Company, P.O. Box 4453, Santa Barbara, Calif. 93103.

HELP WANTED

DISTRIBUTORS for D. J. Andrews, Inc. stump cutter teeth, pockets and bolts. Best wholesale and retail price in U.S.A. Add to this exclusive area, local advertising at our expense, etc., and you have our story. D. J. Andrews, Inc., 17 Silver St., Rochester, N.Y. 14611. Call 716 235-1230, or 716 436-1515.

WANTED: Tree salesman for established Tree Surgery & Landscape Company located in southern Massachusetts. Please send resume — all replies confidential. This is also a business opportunity. Write Box 92, Weeds Trees & Turf, 9800 Detroit Ave., Cleveland, Ohio 44102.

SOD NURSERY MANAGER. Young, married man for 400 acre operation serving Chicago metropolitan area. Send resume. Box 91, Weeds Trees & Turf, 9800 Detroit Ave., Cleveland, Ohio 44102.

GIGANTIC

Equipment & Chemical

DIRECTORY

December WTT



"I bet you're connected with the Mafia!"

—trimmings—

FALL LEAVES can damage turf if left to accumulate. A heavy layer of leaves increases disease, reduces photosynthesis and recovery of grasses, particularly in shady locations, according to Purdue University extension agronomists. If leaves are shredded, spread them as uniformly as possible over the entire area.

A NONCERTIFIED APPLICATOR in Illinois has been fined for applying pesticides near Kankakee without a license. The arrest and fine constituted the first action by the State since the Illinois Custom or Public Application of Pesticides Act was made law. Inspectors are currently calling on landscape contractors to check the status of their licenses. Unannounced checks are also being made of applicators on-the-job in attempts to finding application violations.

TOBACCO samplings of the flue-cured variety have indicated six percent contained DDT-TDE residues, according to the USDA's Agricultural Stabilization and Conservation Service. The two insecticides were banned in 1970 for use on tobacco. Application constitutes a violation of Federal law. This example serves as warning to applicators who attempt to use DDT-TDE compounds in spraying ornamentals or other vegetation.

ALLIGATORWEED in Arkansas has increased 20-fold in the past three years. When first discovered in the southwestern part of Arkansas County in 1968, the weed covered about 10 acres. By fall of 1969, 50 acres were infested. In September 1971, 220 acres were reported infested by the Corps of Engineers. The weed, a native to South America, is one of the most difficult of the aquatic weeds to control because it will grow free-floating on water, rooted to the bank, emersed through nine feet of water, in irrigated fields and even on dry land.

Chemical control is available but labeling restrictions prohibit its use in flowing water. The heaviest infestations are located in bayous, streams and rivers. Silvex, a 2,4,5-T derivative, gives effective control. However, because it is a hormone-type herbicide, damage to adjacent crops may be incurred through spray drift.

Biological control through the release of a South American flea

beetle looks promising. The beetle feeds exclusively on alligatorweed.

Efforts are currently being made to encourage landowners to start control measures immediately.

HITCHHIKING GYPSY MOTH continues to be sighted in new areas. Latest location to be struck is Lorain County, Ohio, where USDA officials have reported an egg mass containing well over 100 individual eggs, two cocoon cases and two cast-off larval skins. Officials of USDA's Animal and Plant Health Inspection Service (APHIS) say the infestation was found in a survey following the discovery in August of seven male gypsy moths near a recreational vehicle sales and storage lot.

31,000 AMERICANS are tree farmers. Nationwide, they own 74 million acres of forest land.

QUARANTINE OF EUROPEAN CHAFER is now officially terminated. USDA says that control measures used against other insects also help to combat this pest of soil, plants with roots, grass sod, plant crowns, and roots for propagation. This action removes Federal regulations from all states previously under quarantine — Connecticut, Mas-

sachusetts, New York and Pennsylvania.

BUMPER STICKER BOOM is affecting nearly every segment of America. Radio announcers, newspapers and TV are making unusual stickers a part of every news program. Subjects from love to lettuce are plastered on autos more prominently than the manufacturers name. Latest to be offered is one entitled "Pesticides and Fertilizers are made to HELP THE ENVIRONMENT NOT HURT IT!" If you are interested in acquiring quantities of these with your firm's name imprinted on it, contact Thomson Publications, P. O. Box 50160, Indianapolis, Ind. 46256.

WHITE AMUR or Chinese grass carp has been taken out to dinner, courtesy of the State of Florida. Although the menu of this herbivorous fish is decidedly water hyacinths, the cost of the project still amounts to \$130,000. Randolph Hodges, state natural resources director, said the fish would be used in six isolated and tightly guarded ponds in various parts of the state. The three year program is designed to test the ability of the fish to clean up weed-choked waterways.

The Law In Review

With passage of the Federal Environmental Pesticide Control Act of 1972, it is important to understand the new terms mentioned in the law. These terms will have direct bearing on you the applicator and your business. Definitions of key words of the Law include:

CERTIFIED APPLICATOR: Any individual who meets the prescribed standards set by his state certification program and who is authorized to use or supervise the use of any pesticide which is classified for restricted use.

PRIVATE APPLICATOR: A certified applicator who uses or supervises the use of any pesticide which is classified for restricted use for purposes of producing any agricultural commodity on property owned or rented by him or his employer or (if applied without compensation other than trading of personal services between producers of agricultural commodities) on the property of another person.

COMMERCIAL APPLICATOR: A certified applicator (whether or not he is a private applicator with respect to some uses) who uses or supervises the use of any pesticide which is classified for restricted use for any purpose or on any property other than that defined in the definition of a private applicator.

UNDER THE DIRECT SUPERVISION OF A CERTIFIED APPLICATOR: Unless otherwise prescribed by its labeling, an environmental protection chemical is considered to be applied under the direct supervision of a certified applicator if it is applied by a competent person acting under the instructions and control of a certified applicator who is available if and when needed, even though such certified applicator is not physically present at the time and place the pesticide is applied.