

# meeting dates

S	M	T	W	T	F	S
		1	2	3	4	5
6	7	8	9	10	11	12
13	14	15	16	17	18	19
20	21	22	23	24	25	26
27	28	29	30	31		

**Alabama-Northwest Florida Turfgrass Association** spring meeting in Birmingham, Ala. Apr. 5 and 6.

**Arizona Turfgrass Conference** at the Holiday Inn North in Tucson. Apr. 6-7.

**American Society of Consulting Arborists** fifth annual meeting. Crystal City Marriott Motel, 1999 Jefferson-Davis Highway, Arlington, Va. Apr. 11-13.

**National Golf Foundation** annual meeting at the Summit Hotel, New York City, Apr. 22.

**Florida Turf-Grass Trade Show** at the Sarasota Motor Hotel, Sarasota. May 9-12.

**Florida Nurserymen and Growers Association** annual convention, Deauville Hotel in Miami Beach. May 13-15.

**Southern California Turfgrass Institute** at California Polytechnic Institute, Pomona. May 18-19.

**Rutgers University Turfgrass Research Field Day** at 10 a.m. at New Brunswick, N.J. June 8.

**Grassland '71** fourth annual field day. Eugene, Ore., Municipal Airport. June 23-27.

**California Landscape Contractors Association** at King's Castle, Lake Tahoe. June 23-27.

**1971 Midwest Nursery and Landscape Exposition** at D. Hill Nursery, Dundee, Ill. July 25-27.

**47th International Shade Tree Conference** at the Queen Elizabeth Hilton Hotel in Montreal, Quebec, Canada. Aug. 8-12.

**Penn State Turfgrass Field Day** at the Joseph Valentine Turfgrass Research Center, University Park, Pa. Aug. 25-26.

**Alabama-Northwest Florida** annual turfgrass short course in cooperation with Auburn University, Auburn, Ala. Sept. 9-10.

**Florida Turf-Grass Management Conference**, Pier 66, Ft. Lauderdale. Sept. 19-22.

**Midwest Regional Turf Foundation** field day, Purdue University, Lafayette, Ind. Sept. 27.

**30th Annual Short Course for Roadside Development**, Columbus, Ohio. Oct. 4-8.

**Society of Municipal Arborists** seventh annual meeting at the Empress Motel, Asbury Park, N.J. Oct. 6-8.

**Wisconsin Golf Turf Symposium** at the Pfister Hotel, Milwaukee, Nov. 4-5.

**Northeastern Weed Science Society** 26th annual meeting at the Hotel Commodore in New York City. Jan. 5-7, 1972.

**Ohio Chapter of the International Shade Tree Conference** and the Ohio State University short course for arborists, turf managers, landscape contractors, garden center operators, nursery men, and others, at the Sheraton-Columbus Hotel, Columbus, Ohio. Jan. 23-27, 1972.

# Mr. Sod Grower!!

Step out ahead of competition with the greatest improvement in lawn grasses in a generation!!



discovered and developed by the world's largest and most experienced grower of fine lawns

FRANCHISE LICENSES NOW BEING GRANTED IN SELECTED AREAS TO GROW Warren's A-10, A-20 and A-34 BLUEGRASSES

Tested and evaluated from coast to coast for years

Leading universities across the nation who are engaged in turf research rate A-10, A-20, and A-34 higher in disease resistance and performance than any other bluegrass currently under production.

When you become a grower of Warren's A-10, A-20, and A-34 bluegrasses, you will have a line of lawn grasses that out-perform all others and they will be exclusive with you in your market area.

Briefly, here's the story of these miracle bluegrasses. A-10 does well in hot humid climates. A-20 is resistant to all major grass diseases and A-34 tolerates up to 65% shade. A-10 is deep green in color and holds that color right through prolonged dry spells. A-20 greens up sooner in the spring and stays green longer in the fall. A-34 does equally well in full sun as it does in shade.

When you are a grower of Merion or other bluegrass strains, you have nothing more to offer than your competition has. With Warren's specialty grasses you set the pace and the price, because you have the finest lawn grasses yet developed, and that is not all:

Twenty-five to thirty new grasses, some out-performing A-10, A-20, and A-34 are on the way. All a result of Warren research.

If there is no Warren Nursery or Warren franchise grower in your market area, write for particulars to

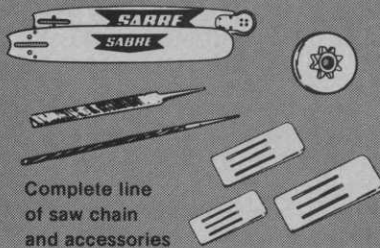


**WARREN'S TURF NURSERIES**

8400 W. 111th ST.  
PALOS PARK, ILL. 60464



Ever since I first bought here, I've been coming back for more. Sabre is one top value you won't beat anywhere.



Complete line of saw chain and accessories

**SABRE**

*the saw.chain people*

**SABRE SAW CHAIN INC.**  
Niagara Falls, N.Y. 14304

SABRE SAW CHAIN INC., Dept. P  
P.O. Box 272 La Salle Station,  
Niagara Falls, N.Y. 14304

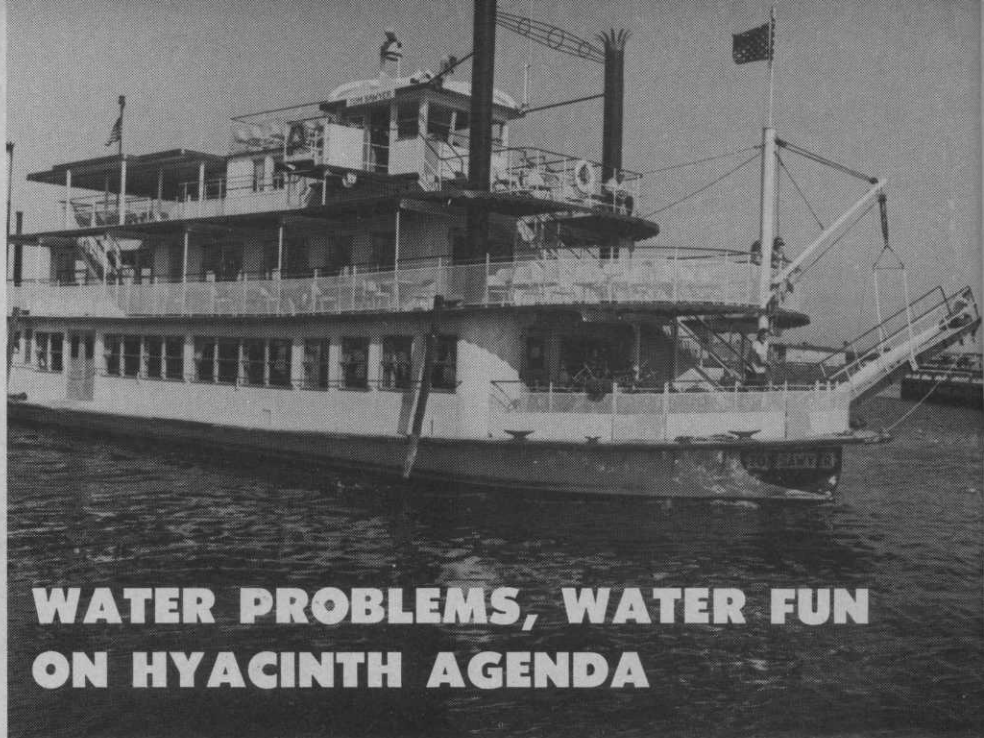
Please send literature on  Saw Chain  Accessories

Name \_\_\_\_\_

Address \_\_\_\_\_

Dealer Name \_\_\_\_\_

Address \_\_\_\_\_



## WATER PROBLEMS, WATER FUN ON HYACINTH AGENDA

Chartered for an evening cruise is the Tom Sawyer, a true riverboat.

Aquatic weeds have become a national concern in the weed control industry. Yet only one organization—the Hyacinth Control Society—makes control of all noxious aquatic weeds its total program.

Founded in 1960, this specialized group of weed control specialists includes industry, educational, and government research, development, and sales members. The 1971 meeting promises to be the most sophisticated to date. It will be headquartered at the Manger Motor Inn, Tampa, Fla., July 11-14.

Efforts are being made by the group to see that anyone in the nation with a commercial concern for aquatic weed control be encour-

aged to attend.

Stanley Abramson, president of the group and associated with Southern Mill Creek Products Co., Inc., at Tampa (P.O. Box 1096), has a program developed which will combine both control procedures and research with practical application in a public climate where more and more restrictions are being demanded concerning pesticide use.

Family groups have long been a characteristic of this particular Society annual meeting and arrangements this year will include special programs for them. On the agenda for family and guests as well as members will be side trips to Busch Gardens, an evening on a true,



Another entertainment feature is a tour of world-famous Busch Gardens.



## Don't Forget the Sulphur For Turfgrass, Says Expert

For every five pounds of nitrogen applied to turfgrass, one pound of sulphur should be added, according to Dr. J. D. Beaton, Director of Agricultural Research of The Sulphur Institute. Writing in *The Sulphur Institute Journal*, Dr. Beaton stresses that high rates of nitrogen fertilization, a frequent practice in turfgrass management, greatly increase the need for sulphur. Unless sulphur is deliberately included in turfgrass fertilizer programs, serious growth deficiency may occur.

Pale green or yellow blades, particularly on the young growth, can be a symptom of inadequate sulphur. Since nitrogen and iron deficiencies have similar symptoms, plant analysis may be necessary for positive identification of sulphur deficiency, Dr. Beaton notes.

Research in Washington State, British Columbia, Florida and other locations have demonstrated that growth, color and density of turfgrass were improved with applications of sulphur, particularly when high levels of nitrogen fertilizer were used. The incidence of several turfgrass diseases was also reduced.

Headquarters for the annual Society sessions will be the Manger Inn, located on the riverfront.

chartered river boat, and the usual recreational features of the Tampa area.

Arrangements have been made for a reduced rate at the Manger Motel (200 Ashley Drive, Tampa, Fla. 33602). Convention rates will be

\$12 single and \$17 double or twin. Reservations may be made direct with the hotel.

Meeting details are available directly from Abramson or Secretary Robert J. Gates (Box 508, Floral City, Fla. 32636).

## Haul your machines on a Miller **RAMP CHAMP** then put it to work

Two styles of RAMP CHAMPS in 2-axle or 3-axle models . . . capacities to 18,000 pounds . . . haul your equipment to the job, then tag-a-long to the nursery to earn its keep hauling big loads of stock, sod or other gear. Miller-engineered suspension gentles the ride, keeps b & b stock intact. Put muscle to work for more profit. Muscle from Miller. Write for FREE TRAILERING GUIDE.

Miller's the one with **useability**



**MILLER**  
**Tilt-Top TRAILERS**

460 South 92nd Street Milwaukee, WI 53214



**RAKE-O-VAC, Toro Manufacturing Corp., Minneapolis, Minn.**

Toro has added the Rake-O-Vac to its line of turf equipment, acquiring the rights to the machine from Goodwin Equipment Service, Inc., of Manteca, Calif. The Rake-O-Vac picks up litter and debris from both soft and hard surfaces and includes a turf renovator. The machine has an 18-hp, two-cylinder gasoline engine that powers a 24-inch double inlet centrifugal vacuum fan and the reel units. With an empty weight of 2,060 lbs., it may be drawn by utility vehicle, tractor or light truck. Rake-O-Vac is said to be ideal for parks, golf courses, cemeteries, institutions, city streets, parking lots, school yards, stadiums and ball parks. For more details, circle (701) on the reply card.



**NEW FERTILIZER PRODUCTS, Kaiser Agricultural Chemicals, Savannah, Ga.**

Kaiser now offers a specially formulated line of landscape products for parks, football fields, recreational areas and golf courses. No. 101 is a 12-4-8 fertilizer, 80% organic nitrogen with 60% actual water insoluble nitrogen. No. 102 is 40% organic nitrogen fertilizer, 12-4-8, 30% actual water insoluble nitrogen. No. 103 is a general use, slow-release 38% nitrogen product. No. 104 is a turf fertilizer and weed killer, 12-4-8, with Balan herbicide for pre-emergence control of *Poa annua* and crabgrass. Kaiser offers free soil tests to determine the exact formulation needed. For more details, circle (702) on the reply card.



**NEW FOUR-WHEEL DRIVE AND SMALL TRUCK, Suzuki Truck Importers, San Diego, Calif.**

The new Suzuki Four-Drive Brute is a part of the L41 truck line. It uses the same two-cylinder, air-cooled engine and the same four-speed transmission as the truck; however it has a standard low-range transmission and four-wheel drive. Suzuki Truck offers twice as large a load bed as the Four-Drive (about 6' long and 4' wide) and a full 1/2-ton load capacity. Both vehicles are said to get excellent gas mileage — the Four Drive about 27 mpg; the truck, about 33 mpg. For more information, circle (705) on the reply card.



**MORE "MUSCLE" IN TRACTOR, Waldon, Inc., Fairview, Okla.**

Two new Ford water-cooled engines and a new 65 hp Wisconsin air-cooled engine, plus a new gearbox, have added more muscle to the Waldon All-Hydraulic, four-wheel-drive tractor unit. This gives the unit five engine options, higher maximum travel speed, a new hood design, and a new balance advantage for use as a bucket loader or fork lift. Frequent requests for water-cooled engines brought the introduction of the Ford four-cylinder, in a 68 hp gasoline and in a 59 hp diesel. The new Wisconsin 65 hp option is added to the 37 hp Wisconsin and a 48 hp Deutz diesel, both air-cooled. For more details, circle (706) on the reply card.



# TELL ME MORE

This page is provided for your convenience. To obtain additional information on new products, trade literature and advertised products in this issue, simply circle the corresponding number on the perforated card below, fill in your name, business address and mail the card. No postage is required.

**FOR MORE INFORMATION FILL OUT AND MAIL TODAY!**

## ADVERTISED PRODUCTS

101 102 103 104 105 106 107 108 109  
110 111 112 113 114 115 116 117 118  
119 120 121 122 123 124 125 126 127  
128 129 130 131 132 133 134 135 136  
137 138 139 140 141 142 143 144 145  
146 147 148 149 150 151 152 153 154  
155 156 157 158 159 160 161 162 163  
164 165 166 167 168 169 170 171 172  
173 174 175 176 177 178 179 180 181  
182 183 184 185 186 187 188 189 190  
191 192 193 194 195 196 197 198 199

## NEW PRODUCTS

700 701 702 703 704 705 706 707 708  
709 710 711 712 713 714 715 716 717  
718 719 720 721 722 723 724 725 726  
727 728 729 730 731 732 733 734 735  
736 737 738 739 740 741 742 743 744

Please send more information on items circled  
(Please type or print) 4/71

Name .....

Position .....

Company .....

Street .....

City .....

State ..... Zip Code .....

Please describe your type of business .....

Note Inquiries serviced until June 20, 1971

Use this convenient card if  
you wish to receive further  
information on products and  
services advertised or de-  
scribed in this issue.



**BUSINESS REPLY MAIL**

NO POSTAGE STAMP NECESSARY IF MAILED IN THE UNITED STATES

FIRST CLASS

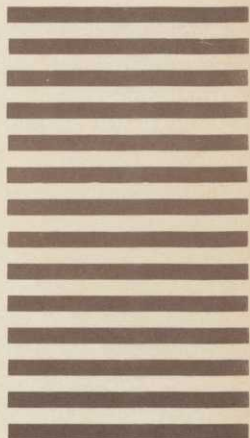
PERMIT NO. 665

DULUTH, MINNESOTA

postage will be paid by

**WEEDS  
TREES  
and TURF**

POST OFFICE BOX 6049  
DULUTH, MINNESOTA 55802

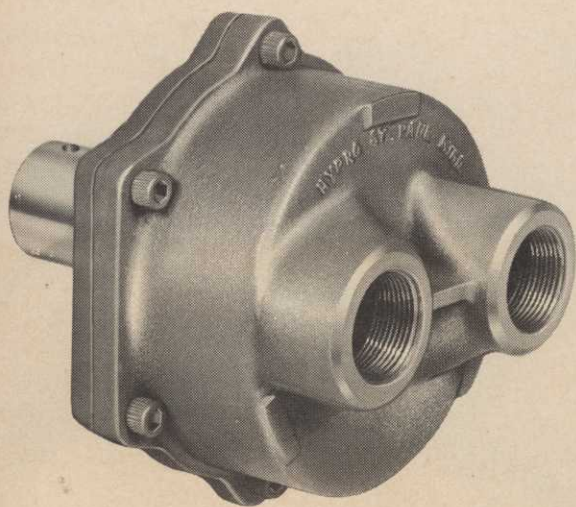






**FRONT RUNNER MAINTENANCE VEHICLE,**  
Hesston Corporation, Hesston, Kans.

Front Runner, Hesston's new entry in the lawn and garden field, is called the first ground maintenance vehicle ever designed especially for the job. More than just a miniature farm tractor, Front Runner is articulated (hinged in the middle) and has a front-mounted mower that cuts grass before the machine runs over it. Hesston offers a complete line of attachments for the machine, including a self-contained vacuum collector that mounts in its own carry-all instead of being pulled behind on a special cart. Front Runner is a 14 hp machine with a top speed of 11 mph. For details, circle (703) on the reply card.



**NEW ROLLER PUMP,** Hypro Division, Lear Siegler,  
St. Paul, Minn.

A new end-ported Series 8500 roller pump for spraying weed killers, insecticides and liquid fertilizers has been announced. It delivers a maximum of 28½ gpm at 600 rpm and 0 pressure with a delivery of 23 gpm at 540 rpm and 30 pounds pressure. The new pump features a unique rotor design engineered to pump powder suspensions and other similar liquids more efficiently. Rollers never pass over openings or portings, thus increasing roller life and improving over-all performance. Weighs about 28 lbs. For more details, circle (707) on the reply card.



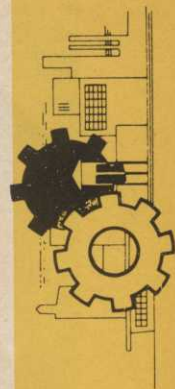
**NEW PRODUCTS FOR SOD FARMS,** O. M. Scotts & Sons.

Three new ProTurf products have been introduced for use in sod fields. They will be sold to sod growers throughout the U.S. through Scotts ProTurf Division. ProTurf Fairway fertilizer is a 30-3-10 controlled-release Polyform fertilizer, non-burning, has no chloride-containing salts, and is a ready-to-use granular product. ProTurf Nitrogen-Potassium contains no phosphorus and is designed for *Poa annua* control programs or wherever phosphorus is not required. Analysis is 32-0-8. ProTurf Fertilizer with DSB Fungicide has been developed to control and prevent Dollar Spot and Brown Patch. The systemic non-mercurial fungicide provides long residual disease benefits. The fertilizer analysis is 28-5-3. For more details, circle (704) on the reply card.



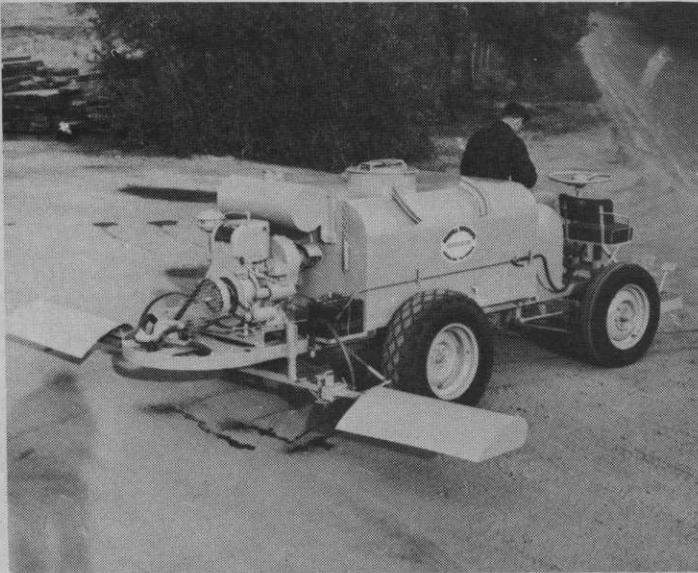
**NEW FLAIL MOWER,** Engler Mfg. Corp., Houston, Tex.

Available in both 72" and 90" models, the new Terrain King flail mower features exclusive "quick change" knives, reversed or replaced with a "twist of the wrist," says R. R. Wright, president of the company. Blades are removed readily by hand, without special tools or delays. Both lift and pull-types are available. The balanced shaft minimizes vibration. The drive line, belt and shaft are fully shielded for safety, and a rear safety flap is standard equipment. Optional on pull-type models are 6x9 notat wheels. For more details, circle (708) on the reply card.



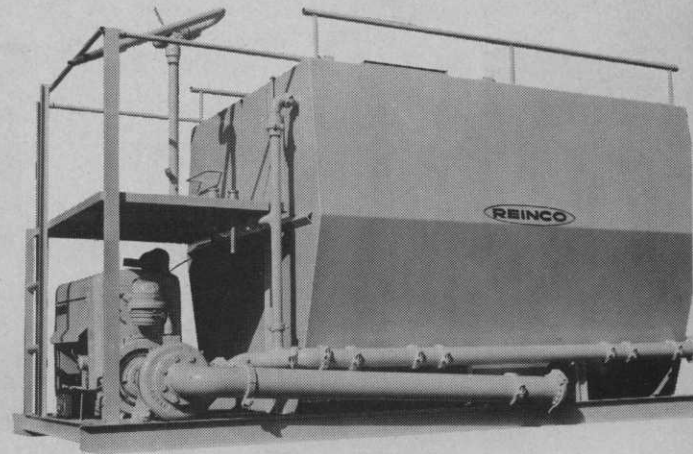
**New Products**





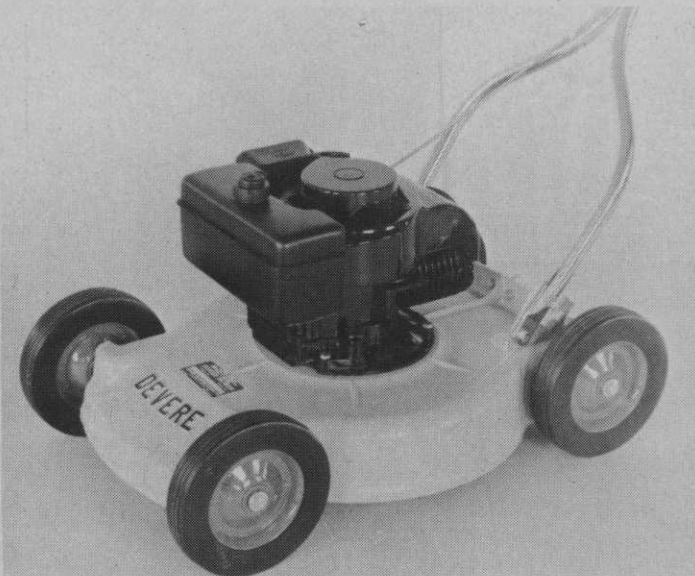
**SELF-PROPELLED WEED SPRAYER, Randell Mfg. Co.,**

This nearly new system can be operated from either side by one man. A hand gun on each side, a center boom and two wing booms make it possible to direct spray to inaccessible places. The booms can spray a 16' swath, and have a break-away feature that allows them to bounce away from obstructions and return to their original position automatically. On uneven terrain, the Randell Self-propelled unit gives complete and even coverage and is capable of speeds up to 15 mph. Four basic models range from 9 to 30 hp, with either front or rear mounted engines, four-wheel-drive, and various drive options. Randell sprayers are shipped ready for use. For details, circle (709) on the reply card.



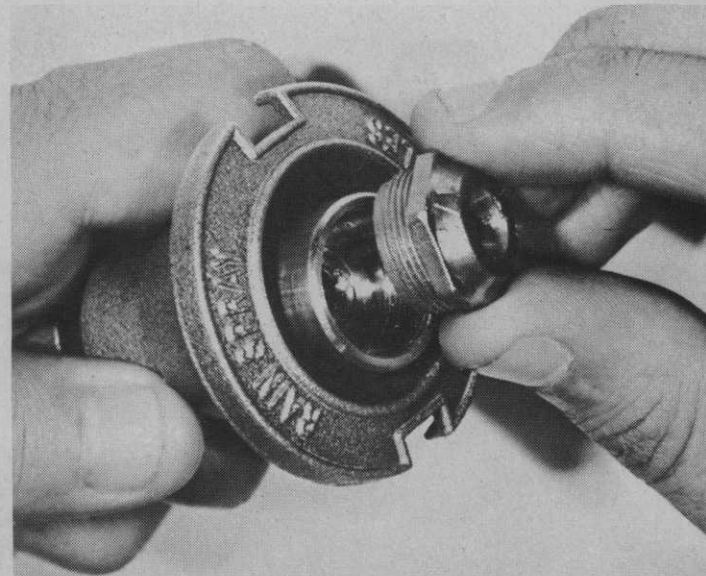
**NEW HYDROGRASSING UNIT, Reinco, Inc., Plainfield, N.J.**

Reinco's new 2,500-gal. working capacity Hydrograsser incorporates the exclusive all-hydraulic jet agitation mixing system. Power is supplied from a six-cylinder 200 C.I.D. water-cooled engine, developing 151 gross hp at 2800 rpm. The pump is an all iron straight centrifugal type with  $\frac{7}{8}$ " particle size clearance. It is stated that a spray range of 200' from the spray platform can be expected. The hydraulically balanced spray return loop attached to the spray boom allows quick coupling of long and medium range, and fan pattern, all cast iron spray nozzles. For more details, circle (710) on the reply card.



**TRIMMING MOWER, Devere Mfg. Co., Racine, Wis.**

Devere has announced an 18" heavy duty trimming type rotary mower designed especially for commercial users, such as golf courses, parks and schools. Powered by a 3½ hp engine, the unit can trim on either side close to trees, walls, and other stationary objects, thus eliminating much time consuming hand trimming and the inconvenience of one-side only trimming. Cutting heights are from 1" to 3" in  $\frac{3}{4}$ " increments. Optional equipment includes a 5½ qt. tank. For details, circle (713) on the reply card.



**BRASS NOZZLE INSERTS, The Leisure Group, Inc., Los Angeles, Calif.**

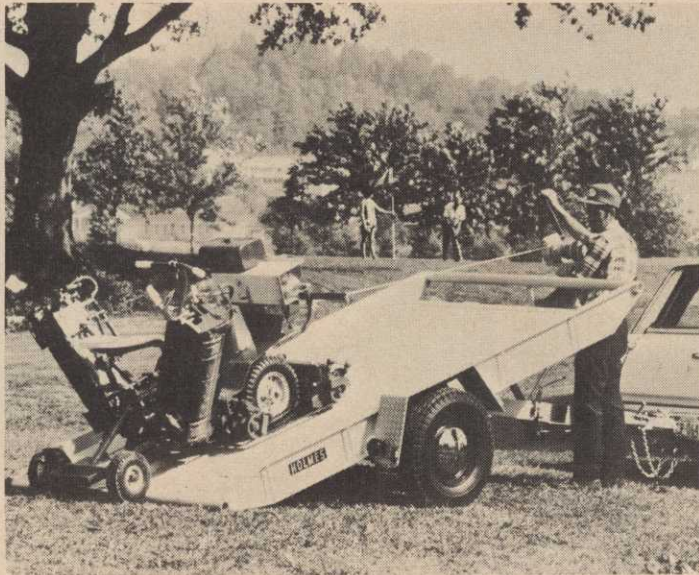
Thompson has added four corrosion-resistant brass nozzle inserts to its 1971 line of Rain Spray underground sprinkler heads. The new brass inserts, and companion Delrin Plastic inserts, come in four spraying patterns from a quarter-circle to a full-circle. They are interchangeable in all Rain Spray underground heads, except the bubbler head and those made of molded polypropylene plastic. Rain Spray underground sprinklers are available in brass, zinc or polypropylene standard heads; brass or polypropylene pop-up heads; a brass shrubbery and ground cover head; and a brass bubbler head. For more details, circle (714) on the reply card.





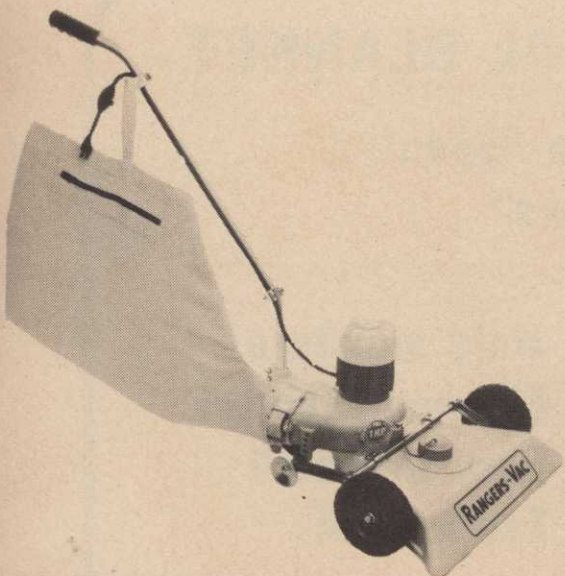
**COMPATIBILITY AGENT, Thompson-Hayward Chemical Co., Kansas City, Kans.**

UNI-MIX is a tank mix additive which aids in keeping pesticides uniformly mixed with liquid fertilizers during field application. It is said to be effective in increasing the compatibility of pesticides not specially formulated for simultaneous applications with liquid fertilizers. UNI-MIX can be used in a variety of fertilizer-pesticide combinations. The product is packaged in the new "no-glug" one gallon jug, four to a case. For more details, circle (711) on the reply card.



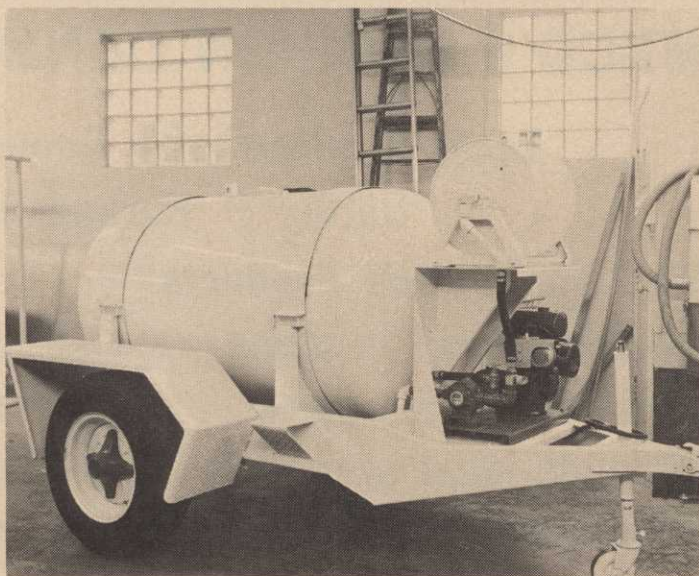
**TILTING BED TRAILERS, Ernest Holmes Co., Chattanooga, Tenn.**

A full line of heavy industrial-type, tilting-bed trailers has been introduced, consisting of five models, ranging in hauling capacities from 4,000 to 16,000 pounds, making them suitable for transporting such equipment as gang mowers, wheel tractors, backhoes, and small dozers. The bed can be tilted by a few strokes on a hydraulic jack provided for this purpose. Tilting and loading requires only one man. Depending on the size capacity, Holmes tilting-bed trailers have a spring-mounted, two-wheel, single axle or an eight-wheel, spring-mounted walking beam suspension. For more details, circle (712) on the reply card.



**LIGHTWEIGHT ELECTRIC VACUUM, Rangers Die Casting Co., Lynwood, Calif.**

Rangers Model #2098 all-purpose electric vacuum is designed for lawns, driveways, garages, workshops, playrooms, factories, stores, office buildings and parking lots. It picks up leaves, twigs, grass, weeds, small stones, common trash and litter. The #2098 Vac has a 1.1 hp burn-out-proof electric ball bearing motor. Vacuum weighs 26 pounds. Bag capacity is about two bushels. For more details, circle (715) on the reply card.



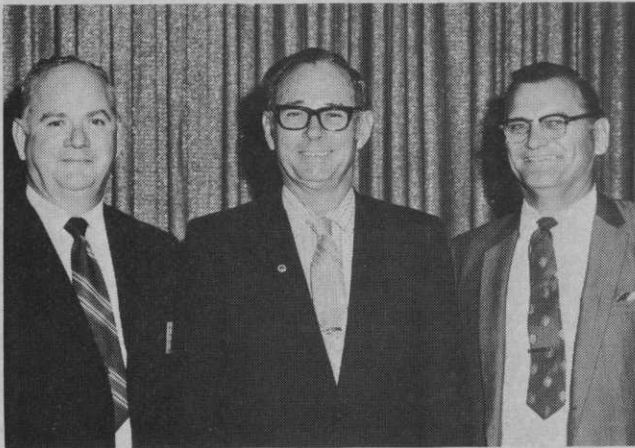
**TRAILER SPRAY UNIT, Lewis Equipment Co., Muncie, Ind.**

These units are available with most any type pump and engine combination that a customer would want. They also can be equipped with mechanical agitation for using wetttable powders. Trailer has electric brakes, the tank is 300-gal. capacity with two baffles and gauge, pump is 7500 Hypro, engine is 4 hp Kohler cast iron block, hose reel is 1/2" 200 ft. long, and tires 215-14-4 ply. For more details, circle (716) on the reply card.

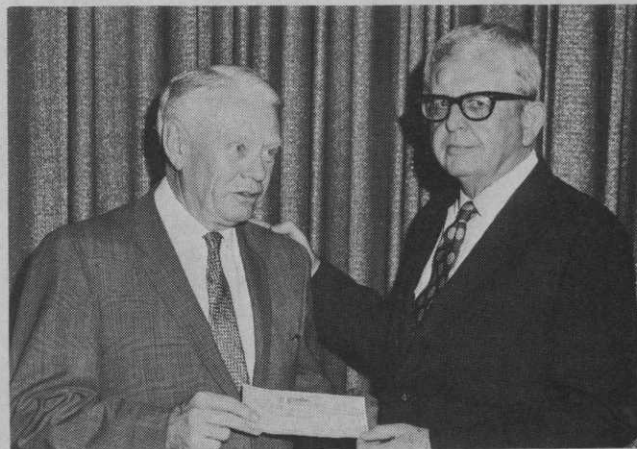


**New Products**





Texas Turfgrass Association has honored these men for service to the turfgrass industry and for another unusual and important achievement. Each have attended all 25 conferences of the turfgrass association. They are, from the left, Charles Gregory, Goldthwaite's, Fort Worth; L. W. "Sonny" DuBose, Jr., superintendent of the Houston Country Club; and Albert W. Crain, Goldthwaite's, Houston. Gregory is serving another term as regional director; DuBose has served several terms as regional director and as vice-president and president. Crain has been editor of the Turf News of Texas some 16 years.



Texas A&M University has received a grant-in-aid from the O. J. Noer Research Foundation. Foundation member Howard Goldthwaite, right, presents the \$4,000 check to Associate Dean of Agriculture Richard C. Potts. The annual grant was made for an in-depth study of thatch in turfgrasses. Noer grants are made from earnings on invested principal. Donations provide funds for turfgrass research in perpetuity. Anyone wishing to contribute to this tax deductible organization should send checks to: The O. J. Noer Research Foundation, Frank Shuman, 1528-32 Belfield Ave., Philadelphia, Pa. 19141.

### New Algicide Receives USDA Registration

Applied Biochemists, Inc., Milwaukee, Wis., has been assigned U.S. Department of Agriculture

Registration No. 8959-2 for SWIMTRINE, a swimming pool algicide.

SWIMTRINE is a chelated copper compound which controls algae without precipitation. It is non-clouding, non-clogging and requires

no waiting period for use of the pool following treatment. The company also manufactures CUTRINE, an algicide for lakes and ponds. Distributorships are available. For details, circle (720) on the reply card.

## AMXCO'S EROSION CONTROL BLANKET

Locks in place with Genuine Aspen  
"Curlex"\* Barbed fibers.

### AMXCO'S Erosion Products.

- Keep the soil in place
- Promote turf growth
- Provide ideal growing conditions
- Hold moisture
- Eliminate rework
- Easy to install
- Economical

AMXCO'S Erosion Control Blankets provide an effective, low-cost method for preventing wind and water soil erosion on steep slopes, road shoulders, median strips, bridge embankments, drainage ditches, ski slopes, waterways, dam sites, water sheds, levees and landscape improvement projects.

\*"Curlex" Aspen fibers expand when wet and force the barbed ends into the soil. This provides maximum holding ability under all weather conditions and assures the promotion of better turf growth.

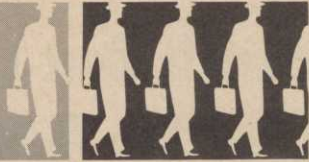
For information on AMXCO'S full-line of erosion control and turf growth products write dept. WTT-2 AMXCO, P. O. Box 5067, Arlington, Texas 76011.



AMERICAN EXCELSIOR COMPANY



industry people  
on the move



**IOWA AERIAL APPLICATORS ASSOCIATION** announces these new officers for 1971: President—Lester Theobald of Mapleton; vice-president—Merrill Johnson of Pacific Junction; secretary-treasurer—Vernon Orr of Whiting; NAAA director—Paul Hursh. Committee chairmen are: Nominating—Dale Shelly; program—Elmer Steier; public relations, Leo Sterk; and legislative, Paul Hursh.

\* \* \*

**JOHN M. MARTIN** has succeeded retiring **HENRY A. THOURON** as chairman of the board of Hercules, Inc., Wilmington, Del.

\* \* \*

**ROBERT F. LEDERER**, executive vice-president of the American Association of Nurserymen, has been elected chairman of the Washington Youth Gardens Council, succeeding Mrs. Orville L. Freeman, wife of the former U.S. Secretary of Agriculture.

\* \* \*

**DENNIS M. DUNBAR** has joined the entomology staff of the Connecticut Agricultural Experiment Station, New Haven, to work on methods of controlling the gypsy moth.

\* \* \*

**HUGH M. LYNN** has joined Thompson-Hayward Chemical Co., Kansas City, Kans., as product manager of fumigation products.

\* \* \*

**DR. GIRTS KAUGARS** has been promoted to research head for the insecticide research unit of TUCO, Division of Upjohn Co., Kalamazoo, Mich.

\* \* \*

**\$300 SCHOLARSHIPS** from the Golf Course Superintendents Association of America have been awarded to: Carl J. Rasnic, Jr., of Beltsville, Md.; Jerry J. Gould of Edgewater, Md.; Harvey B. Wilson, Jr., of College Park, Md.; and Michael J. Larsen of Arbutus, Md.

\* \* \*

**VERNON J. WORREL** is the new executive vice-president and general manager of Ryan Equipment Co., of St. Paul. Making the announcement was C. T. Morris, vice-president of Outboard Marine Corporation, parent company of Ryan. Morris, who is chairman of the board of Ryan, was named president, succeeding Earl W. Nystrom. Morris also is divisional manager of Cushman Motors.

## CROWNVETCH

We stock most seed varieties—certified and uncertified. **CROWNVETCH CROWNS. CROWNVETCH PLANTS.** (Pa. and north-eastern states only.)

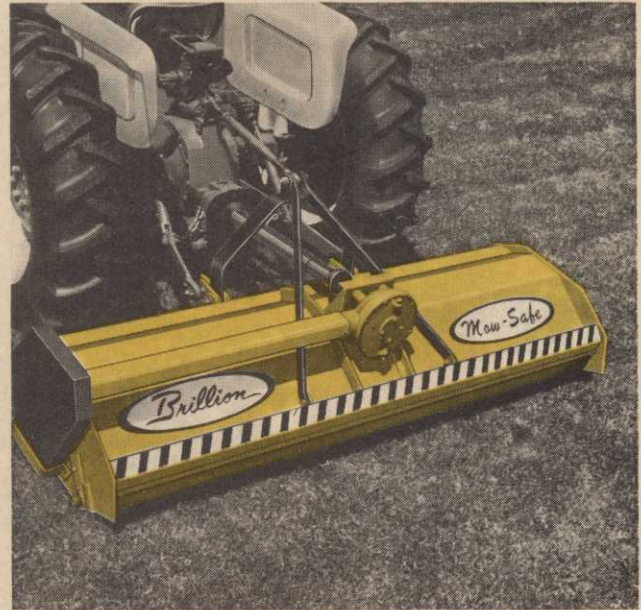
Write or phone for literature & prices. Advise quantity.

## STANFORD SEED COMPANY

Post Office Box 230  
Plymouth Meeting, Pa. 19462  
Phone: 215-825-1240

Post Office Box 366  
Buffalo, N. Y. 14240  
Phone: 716-825-3300

# New 88" Mow-Safe Flail Mower



## — the safest mower made for large acreage cutting

Mow-Safe crew-cuts grass like a lawn mower—but has none of the limitations nor high upkeep of the reel type. It's as simple as a rotary—but without the shortcomings or hazards. Handles grass and weeds without scalping or windrowing, at adjustable heights from ¼" to 6."

Mow-Safe is the safest mower going. The rugged steel housing and in-line cut deposits cuttings—and bottles, cans, wood, stones, etc.—directly to ground for maximum protection of operator, children, passers-by and buildings. Exclusives include factory-balanced rotor-blade assemblies and a built-in floating link that permits mower to follow contour, independent of tractor. Mow-Safe incorporates D-ring mounted reversible flails that swing back when hitting obstructions and automatically return to cutting position; precision steel-cut gears in a 40,000 psi tensile gear box; shielded PTO and drive shafts; job-mated knives and accessories. For 3-pt. pick-up Category I tractors. Mow safe with Brillion. Mail coupon today.

If Brillion builds it—  
it has to be better!



### BRILLION IRON WORKS, INC.

Dept. MS-41-41, Brillion, Wisconsin 54110

Please send information on the following:

- |   |   |
|---|---|
| <input type="radio"/> Mow-Safe Flail Mower    | <input type="radio"/> Terra-Scaper Rake               |
| <input type="radio"/> Turf-Maker Grass Seeder | <input type="radio"/> Smooth Roller Pulverizers       |
| <input type="radio"/> Landscape Seeders       | <input type="radio"/> Name of nearest Brillion dealer |

Name \_\_\_\_\_

Company \_\_\_\_\_

Address \_\_\_\_\_

City \_\_\_\_\_

State \_\_\_\_\_ Zip \_\_\_\_\_





**THERE'S  
ONLY  
1  
MODERN WAY  
TO ESTABLISH  
TURF  
SEED  
SPRIG  
FERTILIZE  
WATER, ETC.  
AND MULCH  
ONLY ONE MACHINE  
DOES IT ALL!  
BOWIE  
HYDRO-  
MULCHER<sup>®</sup>  
WRITE FOR NEW BOWIE  
FAST GROW BROCHURE  
BOWIE  
INDUSTRIES, INC.  
P. O. BOX 931 BOWIE, TEXAS 76230  
OR PHONE AC 817 872-2286**

## Your Standard Is Best Course Golfer Sees on TV; Dunlap Elected

Golf management must "care" about the golfer—the fellow who is paying the bill—the Midwest Regional Turf Foundation conferees were told at its annual meeting at Purdue University.

Marvin Merritt, assistant supervisor of the Cincinnati, O., golf public recreation commission, pointed up change in public golf in the 1960s in reading a speech prepared for delivery by the commission's supervisor, Robert J. Strauss. Strauss, recuperating from an illness, was unable to attend.

"Public link golfers are demanding better courses. Competition is keen for the greensfee dollar. He migrates from course to course. His locker room is the trunk of his car, and he knows what a first class course looks like because he sees them close up every weekend on television."

Course superintendents must constantly stay abreast of changes in management practice, he said. These have multiplied. Public courses are crowded seven days a week, from sunup until sundown. Problems in getting the work done have increased, and this may mean some maintenance will have to be done under lights.

Golfers are increasingly demanding year-round golf, he added, noting that Cincinnati's municipal golf receipts in January, 1971, were more than \$13,000.

Design of new publicly operated courses has these characteristics: easy walking terrain; large greens and tees—so markers and cups can be moved more frequently; wide open fairways, minimum rough for low cost maintenance and fast play; few, if any, sandtraps; and watered

fairways, if free city water or natural water is available.

The future of golf is tremendous, he said. He also foresees tremendous opportunities for new, well-trained golf personnel who possess enthusiasm, love of work, and capacity and willingness to learn.

A Purdue student, John Thorne, said that growth regulating chemicals have a bright future in turf management. Among them are compounds which inhibit formation of seedheads and reduce grass leaves, thus cutting down on the frequency of mowing.

Five Purdue University students specializing in turf studies received a total of \$1,200 in scholarships.

Recipients of golf course superintendents' scholarships valued at \$350 each were William C. Brazeau, West Lafayette, and John R. Cartmill, Evansville.

Other recipients were Lee Overpeck, West Lebanon, \$200 Mueller sod scholarship, and Barry Sage, Seymour, and Richard D. Hudson, Warren, each \$150 Michiana golf course superintendents' association scholarships.

Officers of the Foundation, elected for 1971-72, are John Dunlap, superintendent, Oakwood Club, Cleveland, O., president; Louis E. Miller, superintendent, Louisville Country Club, Louisville, Ky., vice-president; and W. H. Daniel, Purdue turf specialist, executive secretary (re-elected).

New directors are David Fearis, Peoria, Ill., James Timmerman, Orchard Lake, Mich., and Dudley Smith, Orland Park, Ill.

More than 600 attended the conference, co-sponsored by the Foundation and Purdue's agronomy department.

**INTERESTED  
IN AQUATIC  
WEED  
CONTROL?**

**Join the Hyacinth Control Society  
—a group dedicated to control of  
all noxious weeds.**

Individual Memberships \$5/yr.  
Commercial Companies \$95/yr.

Annual Meeting: July 11-14, Hotel Manger, Tampa, Fla.  
(Commercial members invited to exhibit free)

Contact Stanley Abramson, Society President  
5414 North 56th St., Tampa, Fla. 33601, Phone (813) 626-2111