

production for several weeks, with orders filled as far away as Canada and Alaska, Beam said.

The Fitchburg chipper line presently consists of four models, the largest of which will reduce 14½"-wide wood slabs. Units are available as stationary or trailer-mounted.

Sales, engineering, and manufacturing functions have been transferred to the New Holstein plant, according to Les Blumberg, M-B vice-president.

"This famous line of chippers will fit perfectly into our distribution system and other municipal product lines," said Schmidtman, M-B sales manager, "and we look forward to increased sales and top quality service through our large network of dealers throughout the country."

The M-B Company is one of the companies owned by Robert B. Evans, Detroit financier and industrialist.

desirous of locating Long Island's South Shore. Good salary, good benefits and good opportunity for right man. Reply, stating experience and schooling, marital status and salary required to Prudent Controls Corp., 1200 Merrick Road, Copiague, New York 11726.

USED EQUIPMENT

SPRAYERS, chippers, log splitters and other equipment at large savings. Let us know your needs. Equipment Sales Company, 4744 Sunrise Highway, Massapequa Park, N. Y. 11762.

RYAN sod cutter 18" with automatic cut off, like new, only cut 4 acres. Phone 653-4042 Davison, Michigan.

SEEDS

LAWN GRASS SEED — Full line including sod-quality Merion, Fylking, bluegrasses, fescues, bentgrasses, ryegrasses, etc.

We specialize in custom mixing.

OLIGER SEED COMPANY
P.O. Box 3765, Akron, Ohio 44314
Phone 216/753-2259

SOD QUALITY Merion Seed for discriminating growers. Also Fylking, Delta Park, Newport and Prato bluegrasses as well as fine fescues. We will custom mix to your specifications. Michigan State Seed Company, Grand Ledge, Michigan 48837.

SOD

GRASS SOD and Sprigs, Tifway 419

index to advertisers

Agway, Inc.	6
Amchem Products, Inc.	17
Applied BioChemists, Inc.	38
Aquamarine Corporation	1
Asplundh Chipper Company	19
Asplundh Tree Expert Company	25
Big J Products, Inc.	30
Samuel Cabot, Inc.	21
Chanderlin Seed Company	19
Davey Tree Expert Company	5
Diamond-Shamrock Company	15
Fimco, Inc.	27
Gieringer Manufacturing Co.	28
Hercules, Inc.	29
Jacklin Seed Company	31
Lethelin Products Co.	40
Merion Bluegrass Association ...	3rd Cover
Mitts & Merrill, Inc.	37
Nursery Specialty Products Co.	7
Oil-Dri Corporation of America	23
Ousley Sod Company	18
Pioneer Saws, Ltd.	2nd Cover
Ra-Pid-Gro Corporation	36
Sabre Saw Chain, Inc.	11
Safety Test & Equipment Co.	24
Stihl American, Inc.	4th Cover
Wayne Manufacturing Co.	39

and Tifdwarf. 100 acres of clean sod. Hybrid Bermuda 419 — 328 No-Mow, Tif Dwarf and other varieties. 7¢ per Sq. ft. F.O.B. We will arrange for truck. Bayou Pierre Turf Grass Farms, Inc., Carpenter, Mississippi 39050. Phone AC 601 922-3213.

classifieds



When answering ads where box number only is given, please address as follows: Box number, c/o Weeds Trees and Turf, 9800 Detroit Ave., Cleveland, Ohio 44102.

Rates: "Position Wanted" 10¢ per word, minimum \$3.00. All other classifications 20¢ per word, minimum \$4.00. All classified ads must be received by Publisher the 10th of the month preceding publication date and be accompanied by cash or money order covering full payment. Bold-face rule box: \$25.00 per column inch.

FOR SALE

AUSTRALIAN BUSINESS — Agricultural Chemicals — Custom Applicators. This firm specializes in Agricultural and Industrial Weed Control. It is firmly established in three eastern States and there is potential for expansion to the remaining States and New Zealand. Opportunities in allied fields are excellent. An ideal proposition for a chemical or pest control company seeking a comprehensive introduction to the Australian Market. Any reasonable proposition will be confidentially considered by the Founder-Manager who is anxious to ensure the future of this unique organization before retiring. Address all inquiries to: "Chemicals," P.O. Box 767 G, G.P.O. Melbourne, 3001, Vic., Australia.

SMALL Tree Business for sale in Santa Barbara, California. Well established . . . excellent equipment. For details write David Gosnell, P.O. Box 4396, Santa Barbara, Calif. 93103, or call 805 963-2450.

HELP WANTED

LONG ESTABLISHED, medium sized, general pest control firm expanding its tree care department needs General Working Foreman. Requires mechanically inclined person familiar with both fields and

CONTROL without EUTROPHICATION



Aqua-Trio controls aquatic weeds without promoting cultural eutrophication . . . by physically removing them.

Doesn't it make sense?

H-650 — HARVESTER — cuts and stores weeds in live bed hold.

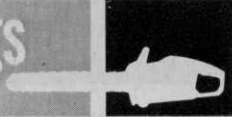
T-650 — TRANSPORT — mates automatically with Harvester . . . transfers load automatically for trip to shore.

S-650 — SHORE CONVEYOR — automatically transfers load to waiting truck.

AQUAMARINE CORPORATION

1116 Adams St., WAUKESHA, WIS. 53186 Phone: 414-542-9491

trimmings



MANUFACTURERS have considered nearly every obstacle that could be encountered while mowing. Yet a new one cropped up early one morning this summer at the Holiday Inn in Culpeper, Va. The mower was stopped cold in its tracks by a 300 lb. black bear.

The mower operator couldn't be reached for comment.

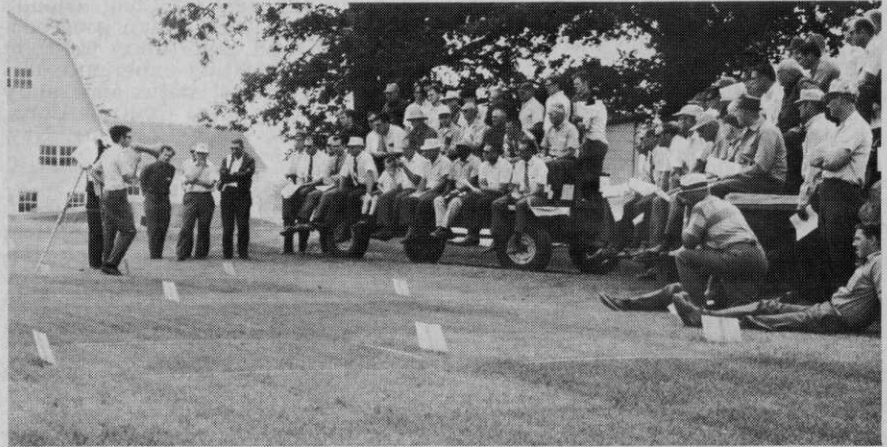
* * *

"A TROPICAL BEAST could Solve Our Lake Worry," reads a headline in the Auckland, New Zealand Star. Auckland botanist V. J. Chapman suggests bringing in the tropical manatee to eat the weeds.

The headline probably did solve the lake worry for many—who are now going somewhere else to have fun.

* * *

IN FRANCE, where folks have almost forgotten what water tastes like, there is concern over how much roaming the automobiles have been doing, and, in the process, killing off the citizenry. All too often the auto and its occupants have come out second best trying to escape from the French hallmark, tree-lined roads. To reduce the slaughter, the worst in Europe, the government has ordered the cutting of trees along hundreds of miles of



Turf response to different fertilizer application rates was discussed by Michigan State turf specialist P. E. Rieke during the University's Crop and Soil Sciences Field Day recently. Phosphorus tends to accumulate in the surface layer of soil, he said, and considerable leaching of potassium may occur when fertilizers are applied to the surface of sandy soils. The rate and distance of phosphorus movement in soils is small and normally not important because of its low solubility in soil water," he said. In test plots on sandy soil, some potassium leached beyond the 10-inch depth. Irrigation increases leaching. Such extreme leaching would not likely occur in soils with higher clay content because they would have sufficient capacity to hold the potassium.

national routes and the removal of hundreds of trees within cities.

As the New York Times concludes: "The assumption that when an automobile hits a tree it's the tree's fault is quintessentially French."

* * *

JOE McDERMOTT, president of the Midwest Turfgrass Growers Association, has issued a call for an improved sod cutter blade. "Surely there is someone in our industry somewhere who has a better blade made of better steel—or hard-sur-

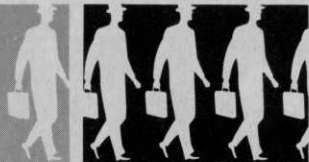
facing process—or something that can help us," he said. The blades are expensive and wear out rapidly in soil with gravel and rocks in it.

For the benefit of Michigan's muck or peat sod farmers, a rock comes in various sizes and shapes and is hard like concrete.

* * *

LESTER ASPLUNDH, board chairman of Asplundh Tree Expert Company, is given credit for kicking a football 100 yards. He also admits that on another occasion, he caught his own punt.

industry people
on the move



NATIONAL GOLF COURSE DESIGN AND CONSTRUCTION COMPANY, a Pompano Beach based firm, has appointed Julius Boros, two-time U.S. Open Champion as its exclusive consultant on golf course architecture. Boros teams with Frank Batto, widely known designer. Officers of the year-old company are John R. Doran, president; Frank Batto, vice-president and general manager; Santo Madrazo, secretary-treasurer; and Jack Culbertson, sales representative.

* * *

LOFT'S PEDIGREED SEED COMPANY has appointed C. M. "Brownie" Brownell as head of production and development for special proprietary seed products in the Pacific Northwest states. In addition to his new duties, he will continue to serve Great Western Seed Company as vice-president and assistant general manager.

* * *

RICHARD J. PAHL has been named manager of special products for Great Western Seed Company. He will handle the research, production and distribution of spe-

cial ornamental products for ultimate sale through retail outlets in the U.S.

* * *

DAVID T. McLAUGHLIN has been named president and chief operating officer of Toro Manufacturing Corporation, Minneapolis. McLaughlin, 38, resigned the presidency of Champion Packages Company, subsidiary of U.S. Plywood-Champion Papers, Inc., business group to accept the Toro post.

* * *

ROBERT E. SCOBEE of Fort Wayne, Ind., has been honored by the Upjohn Company for outstanding sales achievement in 1969. One of four to be honored in the agricultural chemicals division, Scobee is a member and former secretary of the Indiana Golf Course Superintendent's Association and a director of the Midwest Turf Association.

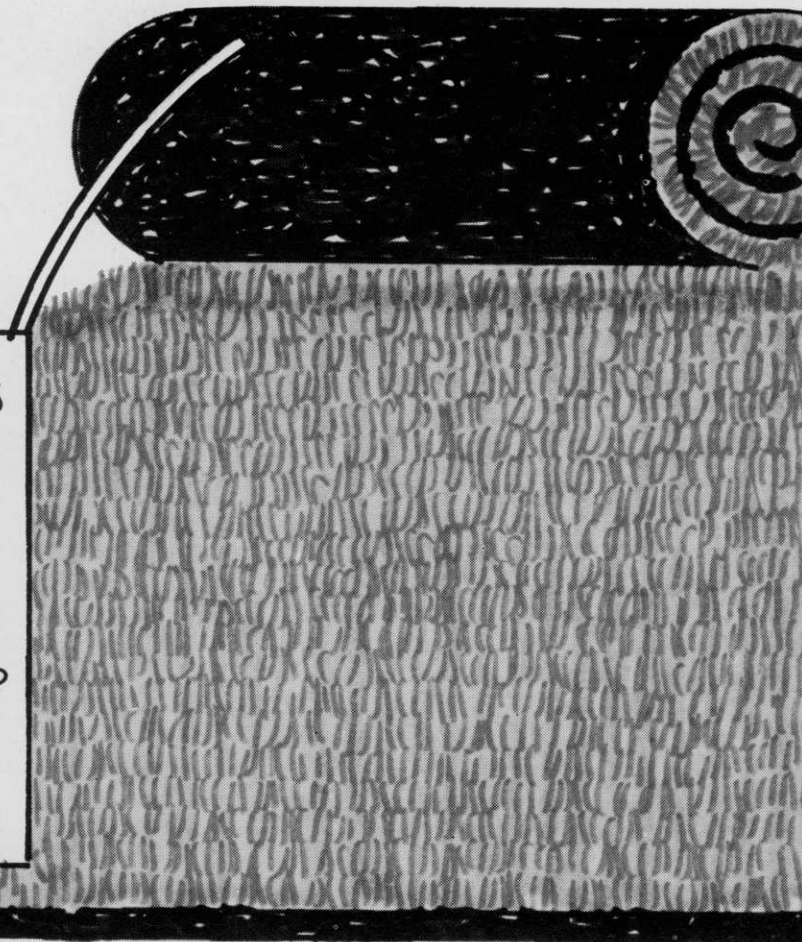
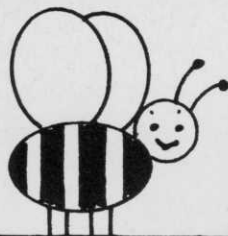
* * *

EUGENE A. SNYDER is the new president of Amchem Products, Inc. He succeeds Gerald Romig, who continues as chairman.

* * *

FREDERICK R. MICHA, newly appointed vice-president of sales for Monroe Tree Surgeons, Inc., Rochester, N.Y. has announced these appointments: **STEPHEN A. FRIEDMAN**, supervisor of the landscape department; **GLEN F. HOFFMAN**, arboriculturist; **ALBERT T. AY-LING**, arborist; **WILLIAM A. DYKSTRA** and **ERIC W. GILLETTE**, spray supervisors.

STILL FIRST!



MERION ^{KENTUCKY} bluegrass SEED OR SOD

The men who know best have placed their continuing stamp of approval on MERION—Park, Cemetery and Golf Course Superintendents, Scientists, Growers and Experimental Stations. Whether you're more interested in *Sod for Convenience* or *Seed for Economy*, MERION is your best choice. MERION is famous for its deep green beauty that lasts the summer through with less work and watering. Crowds out weeds and lesser grasses. Takes wear and tear and comes right back. No wonder, Seed or Sod, MERION is still Number One! Still the best lawn for YOU. Get growing now with MERION.

MERION BLUEGRASS ASSOCIATION
101 Park Avenue, New York 10017



FREE—

"Care and Maintenance of MERION Lawns," "Planting MERION Lawns," and "Lawn Beauty with MERION Sod." Ask your dealer or write.