

Well-manicured display plots of sample grasses are maintained at Cal-Turf sales office, Camarillo, Calif., for examination by customers.

are constructed to work in rough terrain without stalling or bogging down.

The result of all these ingredients is a fast-growing company that has mushroomed from zero ten years ago to more than a million dollars annual sales at present.

Cal-Turf, founded and headed by Tobias Grether, offers a total of nine varieties of lawns, including four hybrid bermudagrasses, two bluegrasses, two bentgrasses and one dichondra. Generally speaking, bermudas are used in hot areas and for heavily used locations such as football fields, parks, back yards. The blues are ornamental for front yards, around business buildings and other light traffic locations. Dichondra is used almost exclusively for ornamental home use, while the bents find almost exclusive application in putting greens.

At planting time, fields of polyethylene are spread over the ground

to permit fumigating with methyl bromide and chloropicrin to kill weeds, nematodes and any other "bad guys."

Sprinkler irrigation is supplied through a pipeline system about 400,000 feet in length, or about 80 miles.

Sod is cut in rolls for pallets for easy truck loading and unloading by fork lift.

Cal-Turf will supply a lawn as small as 500 square feet, which costs the buyer \$75, and has handled single projects, such as a housing development, as great as 100,000 square feet.

Largest single customer for the company is Rossmore Leisure World in the Laguna Hills south of Los Angeles. In various steps, an estimated 150 acres of lawn—about 6.5 million square feet—have been supplied to the development.

And that's some lawn in any language!



Champ fork lifts load trucks at the field, are towed to delivery site, then unload and move sod to point of laying.

**Sod Growers!  
Golfers'  
Dream  
Come  
True**



## backyard putting green

Sod growers! Dig this great opportunity. Golfers are a captive market for 0217® Fylking Kentucky bluegrass lawn. It is the one grass that can be cut close enough for true putting practice, and be an absolutely beautiful lawn, too.

Fylking forms a dense turf of greenest green, beginning in early spring and lasting into late fall. It doesn't require special golf course care, yet thrives when cut low as 1/2 inch. A hardy bluegrass originating in Svalof, Sweden, Fylking is drought and winter tough, doesn't show traffic wear and is highly disease resistant. Proven in 12 years of international tests.

Sod growers, tell all golfers about putting greens at home and you will sell 0217® Fylking Kentucky bluegrass (U.S. Plant Patent 2887) sod and seed.



**FYLKING  
KENTUCKY  
BLUEGRASS**

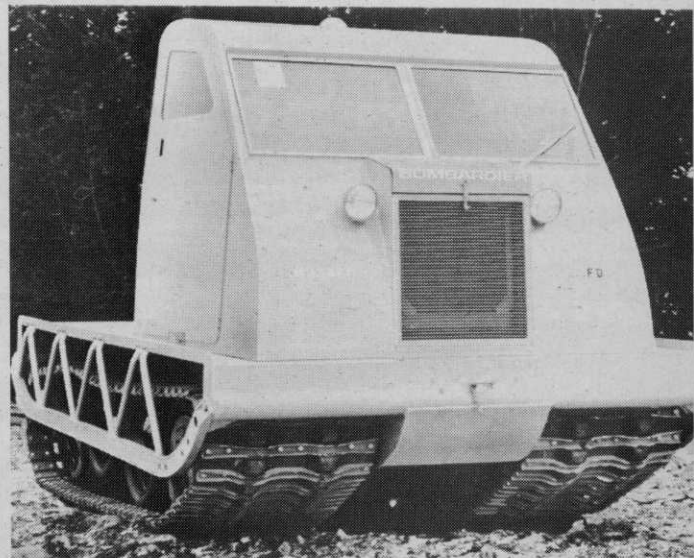
Jacklin Seed Co., Dishman, WA. 99213





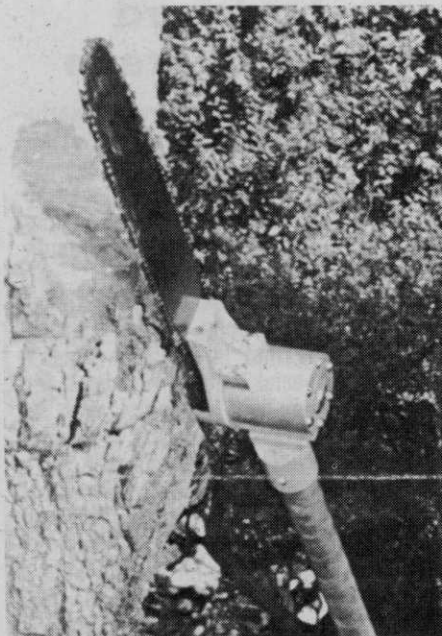
**SMALL BACKHOE**, Arps Corporation, New Holstein, Wis.

Model 708 is a new tractor-mounted (Arps Model RL) backhoe with a shorter work cycle. The key to its higher efficiency is a six-spool, open-center control valve which eliminates cylinder voids. This type valve is often found on large backhoes, but the Model 708 is the only one in its class that has it. The valve also provides cylinder overload protection and gives smooth, positive swing deceleration, eliminating cylinder rod buckling when boom and bucket forces interact. For more details, circle (701) on the reply card.



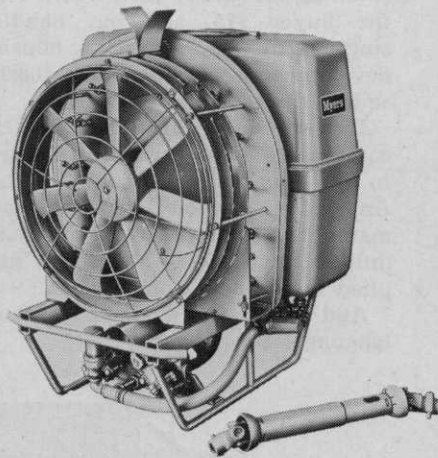
**MUSKEG TRACTOR**, Bombardier, Ltd., Valcourt, Que., Canada.

Power steering and a new final drive system designed to reduce tractor maintenance while improving off-road stability are features of the 1970 line. An improved tandem suspension system enables the vehicles to operate trouble free in extremely treacherous swampland and bogs, or over hilly terrain. Two models are offered, a tractor with rear-mounted engine and the S Carrier (pictured) with front engine and 6½x7-foot rear deck. 190 hp. engine hauls 6,000-lb. payload. For more details, circle (702) on the reply card.



**HYDRAULIC CHAIN SAW**, Limb-Lopper Co., Sante Fe Springs, Calif.

The Mark II Model HCS is latest addition to line of tree-trimming and pruning tools for use by line-clearing contractors, public utilities, and municipalities. Described as the lightest power saw on the market, details of weight and size, extended reach, narrow profile, power, speed and cutting capacity are shown on a data sheet that's available. For more details, circle (705) on the reply card.



**PTO AIR SPRAYER**, F. E. Myers & Bro. Co., Ashland, Ohio.

The A32TM model 'Mity Mist' is a tractor-mounted PTO sprayer designed for orchards, high density plantings, vineyards, crops and turf. According to manufacturer, this compact mist sprayer delivers more air for better reach, with a 32" AXIAL-FLOW fan. It requires only 20 hp at drawbar. Both dilute and concentrate sprays can be handled in either liquid or wettable powder form. For more details, circle (706) on the reply card.



**ALGAECIDE-FUNGICIDE**, Applied BioChemists, Inc., Milwaukee, Wis.

Citrine is a new product for the elimination of all forms of algae. A chelated copper compound, it will not precipitate out in water and is safe for all other living things when used as directed. Used in lakes, ponds, irrigation systems—any body of water. Citrine also has proved to be an excellent fungicide for controlling several fish diseases. For more details, circle (707) on the reply card.





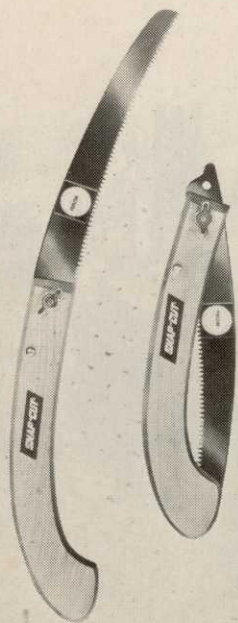
**STUMP CUTTER, Wayne Manufacturing Co., Pomona, Calif.**

A completely new design, heavy-duty Stump King puts emphasis on productivity through wider range cutting and quicker setup time. Compact dual cutting wheels offer 64" reach through the unique swivel-mounted, articulating cutting head; a 27" cutting depth below ground level; and an 147" range of lateral movement of the head on its semi-circular traverse rail, allowing cutter to get at clustered stumps without relocating. Chip dust is kept to a minimum and the cutting head remains cool with the exclusive built-in waterspray system. For details, circle (703) on reply card.



**TREE SPADE, Vermeer Manufacturing Co., Pella, Ia.**

By mounting Vermeer's TS-30 tree spade on its M-30 Ditchmaster Tractor and adding a new Vermeer high-capacity loader on the other end, the new model 30-30 provides maximum versatility for all small tree-moving operations. Center articulation and optional high flotation tires permit the unit to maneuver easily on almost any terrain and within confined digging and planting areas. The 30-30 digs, lifts and transports a 30" diameter by 36" deep ball. For more details, circle (704) on the reply card.



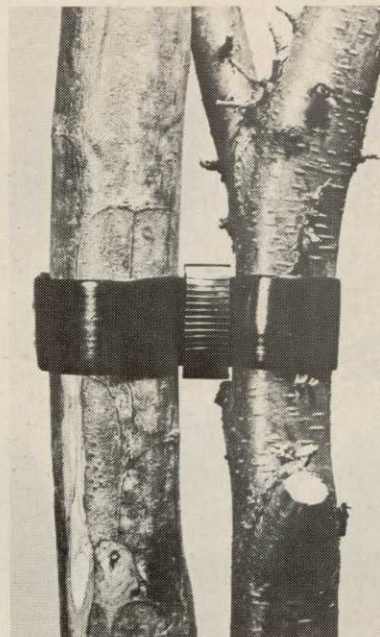
**TEFLON-COATED SAW, Seymour Smith & Son, Inc., Oakville, Conn.**

This Snap-Cut saw won't rust, gum up, stick or get messy, thanks to a coating of DuPont TEFLON-S. This is a coating developed especially for rough applications . . . doesn't wear, chip or peel but "work burnishes" to a glossy satin-smooth finish that makes the saw cut faster, easier, smoother. Folds neatly; has pull or draw-cut 10" blade. For more details, circle (708) on the reply card.



**EARTH AUGER, Johnson's Industrial Supply Co., St. Louis, Mo.**

18-inch auger works off any 1/4" or larger electric drill to make holes ideal for fertilizing, watering and aerating trees and shrubbery. Auger drills a 1 1/4" hole up to 18" in all types of soil. Loosened soil is elevated up and out. For more details, circle (709) on the reply card.



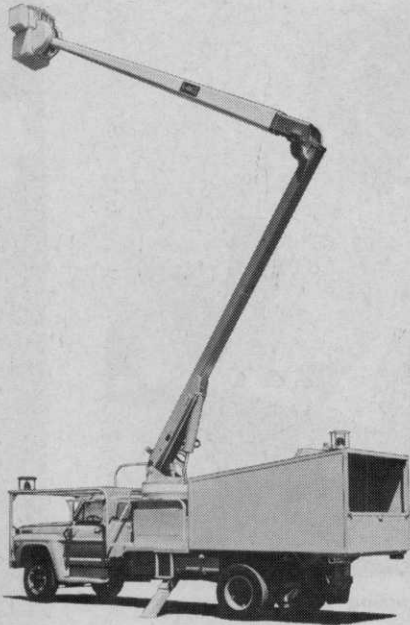
**TREE TIE, Langdon, Ltd., London, England.**

Rainbow tree tie with central spacing collar prevents rubbing between the tree and supporting stake. The encircling strap is flexible and expands to allow the tree to grow without scarring or strangling the trunk. For more details, circle (710) on the reply card.



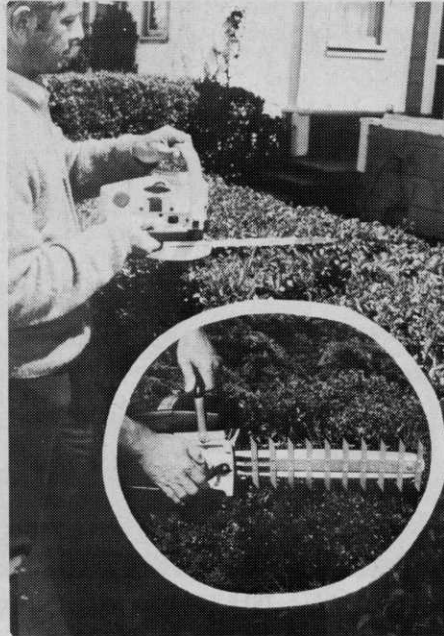
**New Products for the Tree Industry**





**CHIP BOXES, Mobile Aerial Towers, Inc., Fort Wayne, Ind.**

Three standardized chip boxes for tree trimming work are announced as stock accessories available with "Hustler" 4D Series and the "Linesman" 5TD Series reverse-mounted HI-RANGER Towers. All sizes are 90" in width and essentially identical in design and construction. Lengths are 84", 102" and 120"; and over-all heights 55", 55" and 64". For more details, circle (711) on the reply card.



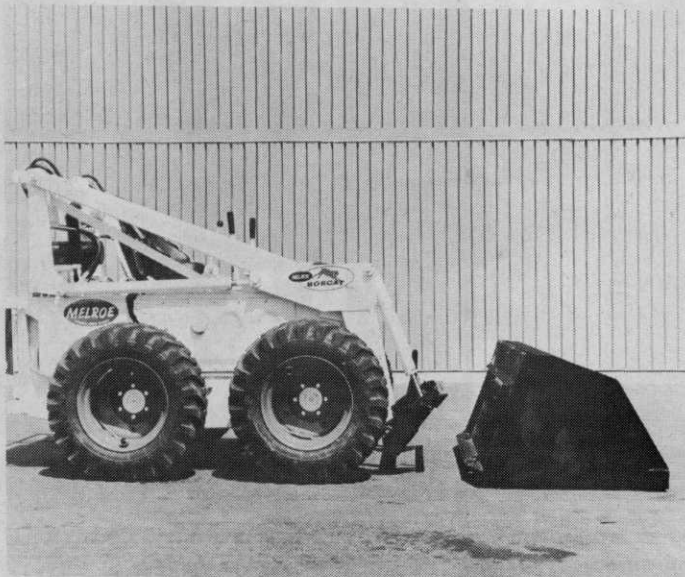
**BRUSH TRIMMER, Granberg Ind., Richmond, Calif.**

CLIP-N-TRIM converts lightweight chain saws into powerful trimmers of even the toughest and thorniest growth. It provides fast cutting of thicknesses from paper-thin foliage to branches up to one-inch in diameter. Specially designed for hedges, pruning and shaping trees, and cutting rugged brush along with troublesome weeds. Made in two widths for 12", 14", 16" and 20" bars. For more details, circle (712) on the reply card.



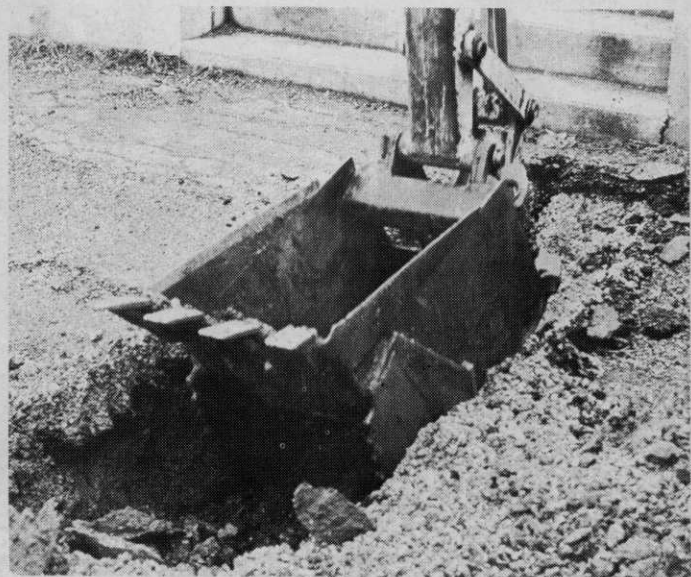
**DECORATIVE BARK, Boise Cascade, Boise, Idaho.**

Decorative chunk bark is now available in a new package, color coded to indicate chunk size: Magenta is 1½" to 2½"; orange is ¾" to 1½"; and blue is ½" to ¾". The package is 6-mil polyethylene bag. Bark is effective groundcover around shrubs, flowers, trees and along walkways. For more details, circle (713) on the reply card.



**BOB-TACH SYSTEM, Melroe Division, Clark Equipment Co., Gwinner, N.D.**

System permits operator to change attachments in seconds, without leaving machine. Under normal conditions, the switch from bucket to pallet fork may be made in less than 20 seconds. The system is an accessory for Melroe 600 (1,000-lb. capacity) models and is standard on the Melroe 970 (3,000-lb. capacity) series. The Bob-Tach is a self-tightening wedging mechanism. A single lever actuates the spring-loaded wedges on the 600 models, while two levers perform the hooking and unhooking on the 970. For more details, circle (717) on the reply card.



**BACKHOE BUCKET FROS-TEETH, M & W Gear Co., Gibson City, Ill.**

FROS-TEETH that let tractor-mounted backhoes dig readily through four and five feet of hardest frozen ground have been introduced by M & W Gear Co. FROS-TEETH backhoe bucket side saws are quickly attached or removed, but do not need to be removed for ordinary work, as they do not interfere with the regular operation of the bucket. Available for Case, IHC, John Deere, Ford and Davis backhoe buckets. For more details, circle (718) on the reply card.

# TELL ME MORE

This page is provided for your convenience. To obtain additional information on new products, trade literature and advertised products in this issue, simply circle the corresponding number on the perforated card below, fill in your name, business address and mail the card. No postage is required.

**FOR MORE INFORMATION FILL OUT AND MAIL TODAY!**

## ADVERTISED PRODUCTS

101 102 103 104 105 106 107 108 109  
110 111 112 113 114 115 116 117 118  
119 120 121 122 123 124 125 126 127  
128 129 130 131 132 133 134 135 136  
137 138 139 140 141 142 143 144 145

## NEW PRODUCTS

700 701 702 703 704 705 706 707 708  
709 710 711 712 713 714 715 716 717  
718 719 720 721 722 723 724 725 726  
727 728 729 730 731 732 733 734 735

Please send more information on items circled  
(Please type or print) 8/70

Name .....

Position .....

Company .....

Street .....

City .....

State ..... Zip Code .....

Please describe your type of business .....



Use this convenient card if you wish to receive further information on products and services advertised or described in this issue.



**BUSINESS REPLY MAIL**

NO POSTAGE STAMP NECESSARY IF MAILED IN THE UNITED STATES

postage will be paid by

**WEEDS TREES AND TURF**

BOX 1100

DULUTH, MINNESOTA 55802

**FIRST CLASS**

Permit No. 665

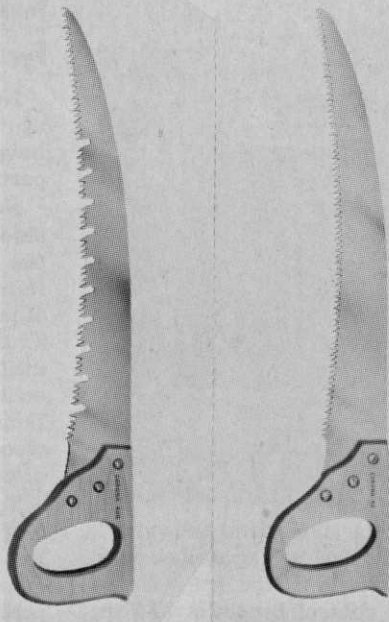
DULUTH MINNESOTA





**CHAIN SAW**, Orline Products, Los Angeles, Calif.

Company says its 149 Mustang is the lightest 14" chain saw on the market. Complete with bar and chain, it weighs 10½ lbs. Has 3.6 to 1 gear drive. Automatic oiling assures adequate lubrication of bar and chain while running. Powered by O&R 1 hp industrial gasoline engine. For more details, circle (714) on the reply card.



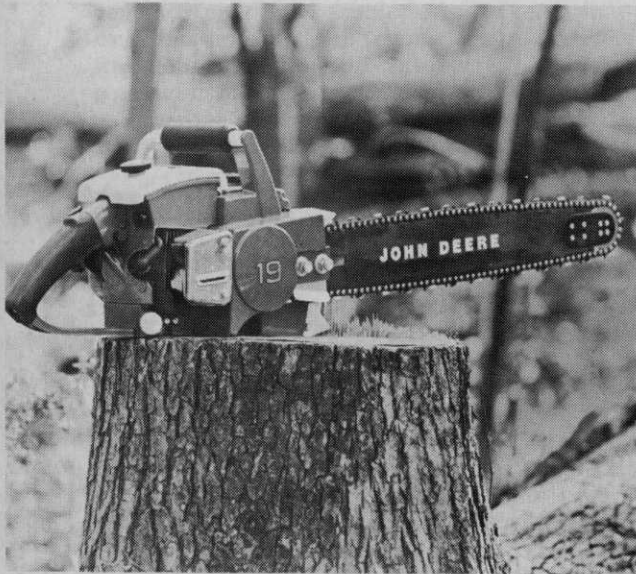
**PRUNING SAWS**, Corona Clipper Co., Corona, Calif.

New saws are No. 46, left, and 46R. Saw No. 46 is 25 inches long with a Sheffield steel cutting blade and hardwood handle. Its mate, No. 46R, is the same but with the added feature of raker, self-cleaning teeth. Both saws weigh 1¼ lbs. each. For more details, circle (715) on the reply card.



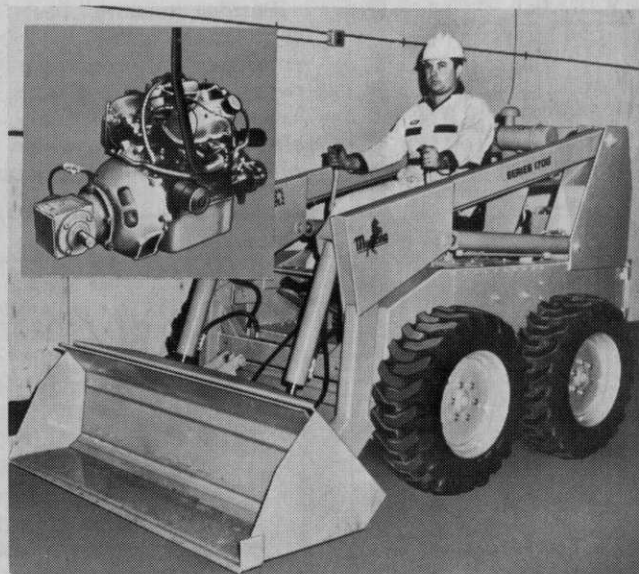
**BARK PRODUCTS**, Premier Peat Moss Corp., New York, N.Y.

Decorative bark, for garden pathways, planters and landscape, comes in three sizes: ¼-½"; ½-1"; and 1-2½". Bark Nuggets and Mini Nuggets are selected pine bark and are used to beautify any ground areas. Bark Nuggets are ½-1½" and Mini Nuggets are ¾-¾". All bark products are available in 3 cu. ft. weatherproof plastic bags and cover 36 sq. ft., one inch deep. For more details, circle (716) on the reply card.



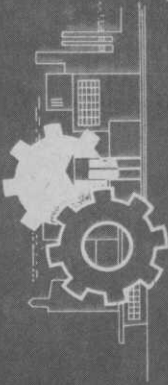
**CHAIN SAW**, John Deere, Moline, Ill.

John Deere introduces four new models of chain saw: Model 12 has 2.8 cu. in. engine, 15-inch guide bar, and 9½-lb. engine; Model 15 has a 3.1 cu. in. engine, 15-in. guide bar, and 10 lb. engine; Model 17 has a 3.6 cu. in. engine, 17-in. guide bar, and 12½ lb. engine; and Model 19 has a 4 cu. in. engine, 19-in. guide bar, and 13½ lb. engine. All four have a patented "roller-nose" at the tip of the guide bar. For more details, circle (719) on the reply card.



**INDUSTRIAL LOADER**, Owatonna Mfg., Owatonna, Minn.

A Torque Converter combined with a Ford water-cooled V-4 engine is now available on the Owatonna Mustang 1700 loader. This new equipment acts as an automatic drive and cushions the engine against shock loads, thus adding years to the operation life of the machine. The Torque Converter unit also prevents engine stall under even extreme operating conditions, and eliminates the maintenance and service problems of variable speed belt drive. For more details, circle (720) on the reply card.



New Products for the Tree Industry





## Arab's Lawn Advertising Wins Customers and Awards

"Color It Green" is the theme of a lawn control campaign instituted by Arab Termite and Pest Control of Florida, Inc., and the slogan has netted the company many customers plus several advertising awards.

The Arab "Color It Green" Junior Poster billboard, won first place in its category in the Tampa Advertising Club "Addy Awards" for 1970, and then walked off with first place

in the Florida state "Addy Awards" competition. The poster design was adapted to serve as the front cover for a lawn control brochure and as a design for bus benches.

Arab has been serving the Florida West Coast for the past 12 years. Lawrence E. Davis of Clearwater is president of the Florida franchise. Offices are located in Tampa, St. Petersburg, Clearwater, New Port Richey, Bradenton-Sarasota and Orlando.

The lawn control service is under the supervision of a professionally trained nursery-landscape specialist and offers customers control of insects, lawn diseases and nematodes, in addition to a lawn fertilizer program.

Besides termite, pest and lawn control, the company has recently embarked on a roof-cleaning service which is receiving excellent customer acceptance. The cleaning eliminates mildew which forms on roofs in a sub-tropical climate.

## New Label Clearances For Tordon Herbicides

New recommendations for the use of Tordon 101 herbicide mixtures have been cleared by the U.S. Department of Agriculture.

New uses for the industrial herbicide product include clearances for the application of Tordon 101 on railroads, highways, pipelines, and other communication lines as well as the previously registered use on utility rights-of-way. Also included on the new label are recommendations for the use of the material for weed control as well as the control of woody brush species.

Tordon 101 herbicide, a product of The Dow Chemical Company, has been widely used for utility rights of way maintenance since the product was introduced in 1963.

Under the new label, Tordon 101 must be applied with a drift control system when applied by air. In ground application it can now be used in high volume sprays in a water mixture or as a low volume spray utilizing a drift control system.

Tordon 101 will provide effective control of many of the toughest weed species. It is effective against such problem weeds as Canada thistle, field bindweed, Russian knapweed, ragweed and several others.

Among the woody plants and vines that are controlled by Tordon 101 are alder, wild rose, bracken fern, maple, oak, hickory and most evergreens. In addition, Tordon will effectively stop the Kudzu vine, a special problem in the Southeast.

For more information, circle (722) on the reply card.

# KEEP AMERICA BEAUTIFUL



### "The Pioneer in Foliar Feeding"

Honored by American Horticultural Council "for demonstrating in a practical way that plants could be fertilized through their leaves; for being the first to develop and market an effective plant food for foliar feeding; and for opening the way to a new cultural practice in horticulture."

## RAPID-GRO

## Pacific Northwest Pesticide Applicators Meet at Portland, Ore., Sept. 10-12

Regional pesticide applicators — those members of the Pacific Northwest Pesticide Applicators, Inc. — stage their 1970 Sprayorama at the Thunderbird Motel, Portland, Ore., Sept. 10-12.

On the program for Sept. 10 will be a special tour of contract applicators in the area. Formal registration begins at 8:30 a.m. on Friday, Sept. 11. The program will include Dr. Spencer Davis, Jr., plant pathologist at Rutgers, Keith L. Davey, president of Davey Tree Surgery, Ltd., of San Francisco, Arthur Edwards of Weeds Trees and Turf magazine, and Dr. James Witt, Dr. Leon C. Terriere, Robert Every, and Dr. Virgil Freed, all of Oregon State. This annual Sprayorama — the only meeting of organized pesticide applicators in the nation — will feature both practical and technical aspects of the contract applicator business. Details on attending (for both members and non members) are available from L. F. Sefton, president of the group, at 5600 S. W. Rosewood, Lake Oswego, Ore. Or you may reach Sefton by phone at 6:00 p.m. Pacific time. Tel. (503) 636-6443.



# Chemists Find Additives That Break Down DDT

Two chemists at Aerojet-General Corporation have discovered a way to break down DDT in as quickly as four hours, or at any predetermined length of time.

Louis Rapp, manager of research and technology at Aerojet, called the achievement perhaps "the best thing since DDT itself was discovered."

The chemists had been working under government contract to find a control for the residual characteristic of DDT which makes it one of the most effective chemicals discovered, yet the very trait that brought about a virtual complete ban of its use about a year ago. Critics charged that residual DDT was endangering species of wildlife.

Keith Sweeney and Rod Fischer at Aerojet developed an additive containing zinc or aluminum. The powder of precipitated zinc (or aluminum) is added to dry DDT and is then dusted or sprayed.

"The granules, fine as face powder, are coated to resist deterioration for several weeks, depending on thickness," said Rapp. In this way, he explained—by thickness—the length of time you wanted DDT to work for you could be determined.

"In the laboratory, applying the material without a coating, we've broken down DDT in as little as four hours."

It would be possible, Rapp said, to spray DDT now in stock then spray the additive later to decompose it. "But our basic concept has been to use coated material and apply both at the same time to avoid the cost of two sprayings."

The discovery came to light with the awarding of a second government contract to Aerojet-General for continued research. The second study will be to collect data to substantiate Rapp's claim that the compounds formed after DDT is decomposed are less toxic than DDT itself.

The additives break down DDT into two principal materials, Rapp said. These are zinc dichlorodiphenylethane and aluminum tetra (chlorophenyl) tetrachlorobutane.

"These compounds predominate, but others are produced," he said. "Our next study will be to confirm the non-toxicity of all these materials to marine life."

Counting field testing that must be done, Rapp estimated that the product still wouldn't be commercially available for at least one to

two years.

Aerojet-General is not a DDT manufacturer, and Rapp expressed the opinion that the company probably would grant licenses to other firms to market the product.

Asked whether he felt the DDT ban would be lifted, Rapp refused to make a prediction except to say the matter probably would be decided in the political arena.

The same query to a Department of Interior spokesman brought this reply: "Provided the additive works and fulfills the objective of the study, I would say that (DDT reinstatement) would be the ultimate purpose."

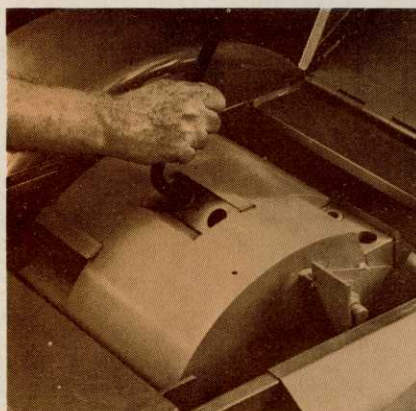
Secretary of Interior Walter J. Hickel, who announced the development of the additive and the second contract, has been quoted as saying that such a formula, giving a built-in self-degrading capability, "will allow the continued use of potent pesticides."

## Mitts & Merrill Brush Chippers For...

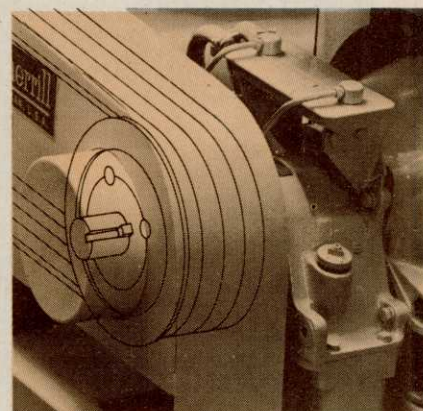


## better design... more efficiency

For more than 115 years Mitts & Merrill has been making specialized machinery for industry. A major part of our business is equipment to reduce scrap and waste. This experience is incorporated into design features on our brush chippers that result in higher efficiency and longer, trouble-free service for you. Only Mitts & Merrill brush chippers offer features like these:



**Staggered knife pattern** for smoother cutting action. Mounted on an all-steel cylinder that, even without an external flywheel, is heaviest in the industry. Each cylinder revolution gives more cuts, produces smaller chips of uniform size. Self-adjusting knives are reversible; give twice the service between sharpening.



**Optional torque converter** isolates engine and transmission from cutting shock to minimize maintenance. Makes operation virtually fully automatic; increases operator productive time. Available on all models.

*Plus...*

• **Positive safety-lock pin** for greater operator safety • **Swing-away, folding feed chute** protects cutting chamber; allows instant access and increases maneuverability • **Heavy duty construction** includes coil spring, torsion-type suspension, and box tubular steel frame.

For complete information, specifications and name of dealer nearest you, contact Mitts & Merrill, Inc., Dept. WTT-93, 109 McCoskey St., Saginaw, Michigan 48601.

mitts & merrill





## USDA Imposes Restrictions To Stop Crane Fly Spread

Emergency plant quarantine regulations are being imposed to prevent the artificial spread of the European crane fly from recently discovered infestations in the State of Washington, the U.S. Department of Agriculture has announced.

Native to northwestern Europe, this crane fly is a pest of lawns, pastures, grains, and other crops. Since it was first reported in British Columbia, Canada, in 1965, ARS plant protection officials have maintained a watch for the flies in the State of Washington near the U.S.-Canadian border. Although flies have occasionally been trapped near the Canadian border in Washington since 1966, no established infestation was confirmed in this country until April, 1970, when larvae were found at and near Blaine in Whatcom County, Wash. The new emergency quarantine is being imposed as a result of these finds.

Emergency regulations provide for immediate control on the movement of articles that could spread the pest from the newly quarantined area in Whatcom County. Items subject to restrictions include:

soil, compost, humus, mulch, peat, and decomposed manure, plants with roots, grass sod, used mechanized cultivating and soil-moving equipment.

Such regulated items cannot move from the quarantined area unless they have been treated to destroy European crane fly infestation.

The European crane fly, *Tipula paludosa* Meig., has become a serious pest of lawn and pastures in the Fraser Valley of British Columbia since its discovery there. It has been estimated that growers in the Fraser Valley spent more than \$¼ million dollars to control the pest in 1969.

## Merion Bluegrass Assn. Appraises Artificial Turf

Merion Bluegrass Association has published a report giving the advantages and disadvantages of artificial and natural grass. It was issued after months of survey and examining the pros and cons as given by experts. The text covers stadium use, golf use, and home use.

Samples of the 12-page booklet are available. For more information, circle (723) on the reply card.

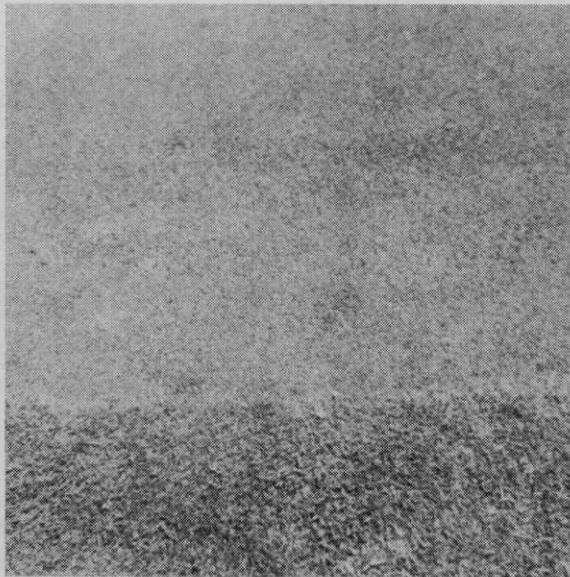
## CIBA, Geigy Directors Announce Merger Proposal

Boards of directors of CIBA Limited and J. R. Geigy S.A. agreed today to recommend a merger of the two companies to their respective shareholders. A joint statement was issued in Basle, Switzerland, by CIBA and Geigy.

"Considerations of cost explain why a merger by way of absorption of one firm by the other had to be chosen instead of a combination of the two companies into a new company which both would otherwise have considered more appropriate and desirable. Accordingly, CIBA Limited will change its name to Ciba-Geigy Limited and J. R. Geigy S.A. will be merged into it.

"It is envisaged that extraordinary shareholders meetings of both CIBA Limited and J. R. Geigy S.A. will be held in Autumn 1970 to take a decision on the merger agreement."

Headquarters for Geigy in the United States is in Ardsley, N.Y. The American affiliate of CIBA is located in Summit, N.J. Both companies manufacture dyestuffs, pharmaceuticals, agro-chemicals and optical brightening agents.



### LOTS!

The area of fringe and green shown above was treated with at least 100 times more CUTRINE than it would take for normal algae control in a body of water.

The picture, taken 5 days after spraying, shows Penncross Bentgrass was not affected in any way.

(By the way, a lake on the course was sprayed at normal levels at the same time. After 5 days the algae was GONE.)

# HOW MUCH CAN A GOLF COURSE TAKE?



(Answer under picture)

*Eliminate Algae and use the same water to keep your grass green.*

**Can You Beat That?**

APPLIED BIOCHEMISTS, INC. (414) 271-5870  
1748 N. Farwell Ave., Milwaukee, Wis. 53202

Gentlemen: Please send complete information on CUTRINE to:

Name .....

Address .....

City .....

State ..... Zip .....

Firm .....

Telephone ..... WTT-8-70



# insect report



## TURF INSECTS

### GRASS MOTHS (*Crambus* spp.)

CALIFORNIA: *C. bonifatellus* heavy and damaging lawns in Fremont, Alameda County.

## INSECTS OF ORNAMENTALS

### BAGWORM (*Thyridopteryx ephemeraeformis*)

KANSAS: Still hatching in Riley County. Damage heavy to evergreens throughout Sedgwick County. OKLAHOMA: Damage moderate to heavy on evergreens in several areas. Also damaging cypress, oaks, and raintree in Payne County. TENNESSEE: Heavy; damage severe to several cedars and arborvitae in Davidson County.

## TREE INSECTS

### ELM LEAF BEETLE (*Pyrrhalta luteola*)

CALIFORNIA: Severely damaged elms in parts of Sacramento, Sacramento County. NEVADA: Larvae and damage light to date at Orovada and Winnemucca, Humboldt County. Damage noticeable in southern Washoe County. UTAH: Adults becoming more common on central area elms. Damage conspicuous at St. George, Washington County. NEW MEXICO: Heavy and damaging Siberian elm foliage at Farmington and Aztec, San Juan County. OKLAHOMA: Small second-generation larvae feeding in Payne County. Heavy in Mayes County. Light to moderate in Marshall County. WEST VIRGINIA: Heavy on several Kanawha County elms. Heavily damaged a Siberian elm in Marion County.

### SPRUCE BUDWORM (*Choristoneura fumiferana*)

MINNESOTA: Defoliation moderate to heavy on 12-15 thousand acres of balsam fir and white spruce on Kabetogama Peninsula east of International Falls, Koochiching County.

### A CICADA (*Okanagana rimosa*)

NEW HAMPSHIRE: Adults emerging and numerous on scrub oak and pitch pine at Ossipee, Carroll County.

### PERIODICAL CICADAS (*Magicicada* spp.)

MARYLAND: *M. septendecula* still active in Prince Georges, Anne Arundel, Baltimore, Harford, and Cecil Counties. Singing and egg laying confined to small heavily wooded areas. *M. septendecim* still active in Frederick and Washington Counties in mountain timberlands. Damage due to *M. septendecim* becoming more evident in counties east of Frederick County, although this species died out 2 weeks ago.

### AN OLETHREUTID MOTH (*Zeiraphera vancouverana*)

CALIFORNIA: Larvae collected at Big Lagoon, Humboldt County. Reared to adults. This is a new state record. The 0.25-inch larvae feed externally on growing tips of Sitka spruce (*Picea sitchensis*).

### PINE TUSsock MOTH (*Dasychira plagiata*)

WISCONSIN: Stripped foliage in 2,000-acre area of Jack pines 25-30 feet tall in northwest section by June 20 in Polk and Burnett Counties.



# stump eater!

The new WAYNE STUMP KING® is here . . . it's a hungry machine! STUMP KING® chews up more stumps faster than any other method of stump removal. HIGH PRODUCTIVITY is achieved by quick set-up on the job and unmatched cutting range. Choice of 2 models — 37 HP and 65 HP.

# &



Team up with WAYNE BRUSH CHIPPERS . . . They can solve your brush disposal problems with high speed and economy . . . economy provided by exclusive 6 sided bed knife adding 50% more life than a conventional 4 sided knife. Multiple safety features assure maximum protection for your operating personnel.

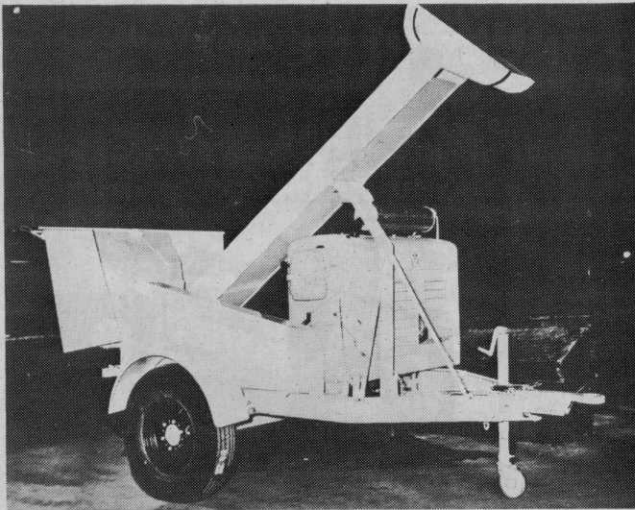
Write for money saving details:



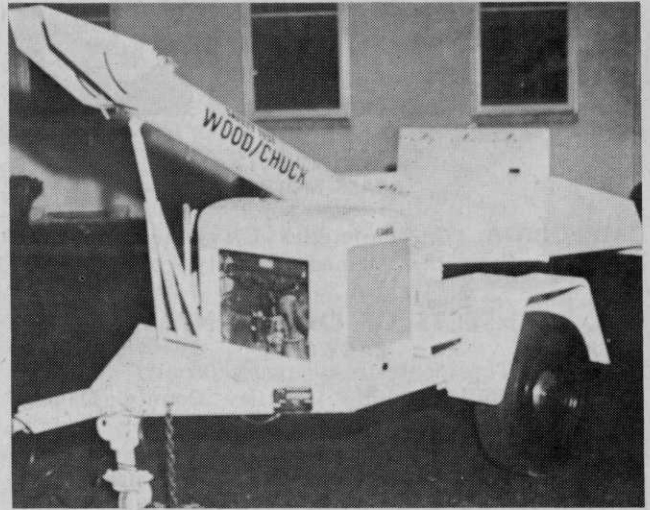
**WAYNE MANUFACTURING CO.**

1201 E. Lexington St., Pomona, Calif. 91766  
SALES, PARTS AND SERVICE WORLDWIDE





M-B Company now owns the Fitchburg chipper.



Safety Test & Equipment Co., buys Wood/Chuck.

## Two Wood Chippers Sold To New Manufacturers

Two wood and brush chippers are operating under new manufacturers.

Safety Test & Equipment Company, Inc., Shelby, N.C., has purchased the WOOD/CHUCK line from Pitman Manufacturing Company.

The M-B Company, New Holstein, Wis., has acquired the Fitchburg

Engineering Corporation's line of wood chipping equipment from the E. W. Bliss Company.

"We've redesigned and considerably improved the old WOOD/CHUCK," said Dennis A. Beam, Jr., STECO president. "For example, we've increased the weight of the flywheel to 350 lbs., and the line has been expanded.

"But we particularly want owners of the Pitman unit to know that

we can service their machines. We purchased all inventories—old and new, tools, jigs, dies, patents, copyrights, and paid-up manufacturing rights."

Total operations have been moved to Shelby, N. C. Correspondence should be directed to Safety Test & Equipment Company, Inc., Drawer 400, Shelby, N.C. 28150.

The transaction became effective in April. New models have been in

## TWO GREAT PRODUCTS

### TREATMENT #2

**Pruning and Wound Sealer**—Aids fast healing of tree wounds caused by pruning, mower scrapes and boring insects. Makes an effective seal that retains the insecticidal vapors of BOREKIL after this product is used to treat borers. Treatment #2 is available for over-the-counter sales or on-job use. Brushable formulations in quart and gallon cans will also be made available.



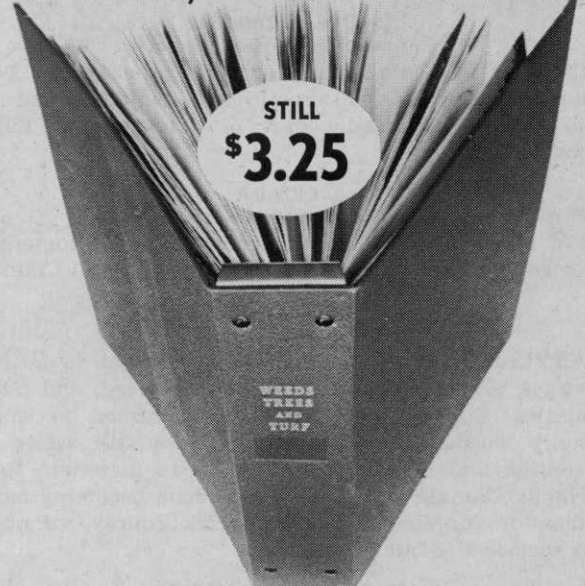
### BOREKIL®

**Effective Borer Control**—A single application with special injector gets to the heart of the borer problem right away. Boring is plugged and borers are killed with insecticidal vapor. Effective on trees, shrubs and flowers. Over-the-counter or on-the-job.

### LETHELIN PRODUCTS CO., Inc.

15 MacQuesten Parkway So.  
Mt. Vernon, New York 10550

## Of Course, We Still Have Them!



### Permanent Magazine Binders

Keep 12 issues of Weeds Trees and Turf in one neat package • Magazine can be easily inserted as it arrives. • Binder protects, gives bookshelf a neat appearance.

Send check or money order to:

**WEEDS TREES and TURF**  
9800 Detroit Ave., Cleveland, Ohio 44102