

Oliver Corp.  
Simplicity Mfg. Co., Inc.

#### **HARROW, SPIKE-TOOTHED**

The Broyhill Co.  
J. I. Case Co.  
Deere & Co.  
John H. Graham & Co., Inc.  
**International Harvester Co.**  
Oliver Corp.

#### **HELMETS**

American Optical Co.  
Great Lakes Chemical Div.  
Mine Safety Appliances Co.  
Pulmosan Safety Equipment Corp.  
Willson Products Div.

#### **HOSE**

Ampulco (Hardie)  
John Bacon Corp.  
The Broyhill Co.  
Century Engineering Corp.  
Contree Sales, Inc.  
DeVilbiss Co.  
The J. L. Dill Co.  
**Friend Manufacturing Corp.**  
Great Lakes Chemical Div.  
Larson Machine, Inc.  
F. E. Myers & Bro. Co.

#### **HYDRAULIC & AIR POWERED TOOLS**

Ackley Mfg. Co.  
Fairmont Hydraulics  
New World Products, Inc.

#### **HYDRAULIC DUMPING HOISTS**

Collins Associates, Inc.

#### **HYDRAULIC SEEDING & MULCHING MACHINES**

Bowie Machine Works, Inc.  
Finn Equipment Co.  
Reinco, Inc.

#### **IRRIGATION CANAL HARVESTER**

Aquatic Controls Corp.

#### **IRRIGATION PIPE**

**John Bean Div., FMC Corp.**  
Certain-teed Products Corp.  
Johns-Manville Corp.  
Reynolds Metals Co.  
R. M. Wade & Co.

#### **IRRIGATION SPRINKLER HEADS**

W. D. Allen Mfg. Co.  
**John Bean Div., FMC Corp.**  
Buckner Industries, Inc.  
Irrigation Accessories, Inc.  
Melnor Industries, Inc.  
Rain Bird Sprinkler  
Rain-O-Mat Sprinklers  
Toro Mfg. Corp.  
R. M. Wade & Co.

#### **IRRIGATION SYSTEMS, COMPLETE**

Adamson Sprinkler Co.  
**John Bean Div., FMC Corp.**  
Buckner Industries, Inc.  
Irrigation Accessories Co.  
Rain-O-Mat Sprinklers  
Telsco Industries  
The Thompson Manufacturing Co.  
Toro Manufacturing Corp.  
Vermeer Manufacturing Co.  
R. M. Wade & Co.

#### **KNIVES, INJECTOR**

Contree Sales, Inc.

#### **LEAF BLOWER**

American-Lincoln Corp.  
The J. J. Dill Co.

Finn Equipment Co.  
**F. E. Myers & Bro. Co.**  
Parker Sweeper Co.  
Rogers Mfg. Co., Inc.  
Solo Industries, Inc.  
**The Vandermolen Co.**

#### **LEVELERS**

Deere & Co.  
**International Harvester Co.**  
Viking Mfg. Co.  
York Modern Corp.

#### **LOADERS, BOOM**

Pitman Mfg. Co.  
Side-O-Matic Unloader Corp.

#### **LOADERS, TRACTOR MOUNTED**

Allis-Chalmers Mfg. Co.

Arps Corp.  
Danuser Machine Works  
Deere & Co.  
Engineering Products Co.  
Ford Motor Co.  
**International Harvester Co.**  
Koyker Mfg. Co.  
Massey-Ferguson, Inc.  
Melroe Mfg. Co.  
Oliver Corp.  
The Sun-Mastr Corp.  
Vermeer Manufacturing Co.

#### **LOG SPLITTERS**

Piqua Engineering, Inc.  
Waco Lickity Log Splitter Div.

#### **MASKS, DUST**

Acme Protection Equipment Corp.

## **Did you ever use a BUFFALO**



**for Shade Trees  
Seeding**

**Weed Control**

**Mosquito Control**

**Fly Control**

**Pest Control**

With their minds on economy but yet getting value for every dollar spent, more and more arborists and pest control contractors are turning to Buffalo Turbine Equipment. Whether it's a sprayer, duster, or combination, Buffalo Turbine has a model to fit your needs and your budget.

One machine does the work of several with one man to operate most models. A Buffalo Turbine does not sit idle as there is a need for it most months during the year. Write for details today, giving your needs. We'll be glad to send you full details.



**BUFFALO TURBINE**  
**Agricultural Equipment Co., Inc.**

Industrial Street  
Gowanda, New York  
Telephone: 716 + 532-2272

American Optical Co.  
**The J. J. Dill Co.**  
Great Lakes Chemical Div.  
Martindale Electric Co.  
Mine Safety Appliances Co.  
Pulmosan Safety Equipment Corp.  
Scott Aviation Corp.  
**The Vandermolen Co.**  
Willson Products Div.

#### MASKS, GAS

Acme Protection Equipment Corp.  
**The J. J. Dill Co.**  
Great Lakes Chemical Div.  
Mine Safety Appliances Co.  
Pulmosan Safety Equipment Corp.  
Scott Aviation Corp.  
Willson Products Div.

#### MEASURING WHEEL

Gandy Co.  
Great Lakes Chemical Div.  
B. G. Reilly Co.  
Rolatape, Inc.

---

### MISCELLANEOUS

---

#### CONVEYORS, PORTABLE, BELT

Stone Conveyor Co., Inc.

#### DIFFERENTIALS

Tecumseh Products Co.

#### FLOTATION TIRES & WHEELS

Martin Tire & Supply, Inc.

#### GASOLINE ENGINE

Rudd Manufacturing, Inc.

#### GEARED ANGLE DRIVES

Tecumseh Products Co.

#### ROTARY LAWN MOWER BLADES

The Whitaker Manufacturing Co.

#### SICKLE BAR MOWER REPAIRS

The Whitaker Manufacturing Co.

#### STORAGE TENDER UNIT

Rudd Manufacturing Co.

#### TRANSAXLES

Tecumseh Products Co.

#### TRANSMISSIONS

Tecumseh Products Co.

#### MISTBLOWERS, BACKPACK

Buffalo Turbine Ag. Equip. Co.  
Burton Supply Co., Inc.  
**The J. J. Dill Co.**  
Great Lakes Chemical Div.  
Hanson Equipment Co.  
H. D. Hudson Mfg. Co.  
Silver Creek Precision Corp.  
Solo Industries, Inc.  
**The Vandermolen Co.**

#### MISTBLOWERS, TRUCK-MOUNTED

Ag King (Div. of TAGS)  
Ampulco (Hardie)  
Aquanautics, Inc.  
**John Bean Div., FMC Corp.**  
Besler, A Div. of C-C Industries  
The Broyhill Co.  
**Buffalo Turbine Ag. Equip. Co.**  
**The J. J. Dill Co.**  
**F. E. Myers & Bro. Co.**  
Silver Creek Precision Corp.  
Solo Industries Inc.  
**The Vandermolen Co.**

#### MISTBLOWERS, NOZZLE PARTS

Ag King (Div. of TAGS)  
**John Bean Div., FMC Corp.**  
The Broyhill Co.  
**Buffalo Turbine Equipment Co.**  
Century Engineering Corp.  
**The J. J. Dill Co.**  
Great Lakes Chemical Div.  
H. D. Hudson Mfg. Co.  
**F. E. Myers & Bro. Co.**  
Solo Industries, Inc.

#### MOTORS

L. M. Cox Mfg. Co.  
**International Harvester Co.**  
Tecumseh Products Co.  
**The Vandermolen Co.**  
Waukesha Motor Co.

#### MOWERS, BLADES & CUTTING PARTS

The Whitaker Manufacturing Co.

#### MOWERS, FLAIL

**John Bean Div., FMC Corp.**  
J. I. Case Co.  
Deere & Co.  
Excel Industries, Inc.  
Ford Motor Co.  
Gravely Tractors  
Henderson Mfg. Co.  
**International Harvester Co.**  
Massey-Ferguson, Inc.  
Mott Corp.  
The Sun-Mastr Corp.

#### MOWERS, GANG

Allis-Chalmers Mfg. Co.  
Bolens Div., FMC Corp.  
J. I. Case Co.  
Gravely Tractors  
**International Harvester Co.**  
Jacobsen Mfg. Co.  
Roseman Mower Corp.  
Roxy-Bonner, Inc.  
Simplicity Mfg. Co., Inc.  
The Sun-Mastr Corp.  
Toro Manufacturing Corp.

#### MOWERS, REEL

Bolens Div., FMC Corp.  
J. I. Case Co.  
Devere-Locke Div., Locke Mfg. Co.  
Gravely Tractors  
**International Harvester Co.**  
Jacobsen Mfg. Co.  
Jari Corp.  
**Locke Mfg. Co., Inc.**  
Roseman Mower Corp.  
Roxy-Bonner, Inc.  
Simplicity Mfg. Co., Inc.  
The Sun-Mastr Corp.  
Toro Mfg. Corp.

#### MOWERS, ROTARY

Allis-Chalmers Mfg. Co.  
Ariens Co.  
**John Bean Division, FMC Corp.**  
The Black & Decker Mfg. Co.  
BMB Co.  
Bolens Div., FMC Corp.  
**Brillion Iron Works, Inc.**  
J. I. Case Co.  
Deere & Co.  
Engineering Products Co.  
Excel Industries, Inc.  
Ford Motor Co.  
Gale Products  
Goodall Mfg. Corp.  
Gravely Tractors  
Heckendorn Mfg. Co., Inc.  
Homelite Div., Textron, Inc.  
**International Harvester Co.**  
Jacobsen Mfg. Co.  
Jari Corp.  
**Locke Mfg. Co., Inc.**

Massey-Ferguson, Inc.  
Oliver Corp.  
Pennington Mfg. Co.  
Quick Manufacturing, Inc.  
Rear's Mfg. Co.  
Simplicity Mfg. Co., Inc.  
Speedex Tractor Co.  
Solo Industries, Inc.  
The Sun-Mastr Corp.  
Thor Power Tool Co.  
Toro Manufacturing Corp.  
Triumph Machinery Co.  
Yazoo Mfg. Co., Inc.

#### MOWERS, SICKLE BAR

Allis-Chalmers Mfg. Co.  
Deere & Co.  
Gravely Tractors  
**International Harvester Co.**  
Jacobsen Mfg. Co.  
Jari Corp.  
Massey-Ferguson, Inc.  
Simplicity Mfg. Co., Inc.

#### MOWERS, VERTICAL (De-Thatchers)

Allis-Chalmers Mfg. Co.  
**International Harvester Co.**  
Jacobsen Mfg. Co.  
Rental Equipment Mfg. Co.  
Rogers Mfg. Co., Inc.  
**Ryan Equipment Co.**  
Triumph Machinery Co.  
West Point Products Corp.

#### PASTEURIZERS, SOIL

Tarrant Mfg. Co.

#### PROPORTIONING SYSTEMS

Contree Sales, Inc.  
Vineland Laboratories, Inc.

#### PROTECTIVE CLOTHING

American Optical Co.  
Charleston Rubber Co.  
Mine Safety Appliances Co.

#### PRUNERS

John Bacon Corp.  
Bartlett Mfg. Co.  
Fairmont Hydraulics  
Fanno Saw Works  
John H. Graham & Co., Inc.  
Halline Utility Equipment Co.  
Hunt-Pierce Corp.  
Miller Robinson Co.  
Melnor Industries, Inc.  
New World Products Co., Inc.  
Pitman Mfg. Co.  
H. K. Porter, Inc.  
**Rowco Mfg. Co., Inc.**  
Seymour Smith & Son, Inc.  
Stihl American, Inc.

#### PUMPS

Ace Pump Corp.  
Ampulco (Hardie)  
Aurora Pump Div.  
John Bacon Corp.  
**John Bean Div., FMC Corp.**  
Bowie Machine Works, Inc.  
The Broyhill Co.  
Century Engineering Corp.  
Contree Sales, Inc.  
Delavan Manufacturing Co.  
DeVilbiss Co.  
Dempster Industries Inc.  
**The J. J. Dill Co.**  
Farmrite Sprayer, Inc.  
Farris Chemical Co.  
**Friend Manufacturing Corp.**  
Gotcher Engineering & Mfg. Co.  
Hanson Equipment Co.  
Homelite Div., Textron, Inc.  
H. D. Hudson Mfg. Co.  
Hypro, Inc.  
Larson Machine, Inc.

Marlow Pumps Div.  
Minnesota Wanner Co.  
**F. E. Myers & Bro. Co.**  
Oberdorfer Pump Div.  
Solo Industries, Inc.  
Thor Power Tool Co.  
Tryco Mfg. Co., Inc.  
Universal Motor Co.  
Viking Pump Co.

#### RAKES

Arps Corp.  
Bartlett Mfg. Co.  
Deere & Co.  
**International Harvester Co.**  
Jari Corp.  
Rental Equipment Mfg. Co.  
Roseman Mower Corp.  
Triumph Machinery Co.  
York Modern Corp.

#### REELS, HOSE

Clifford B. Hannay & Son, Inc.  
Melnor Industries, Inc.

#### RESPIRATORS

Acme Protection Equipment Corp.  
American Optical Co.  
John Bacon Corp.  
**The J. J. Dill Co.**  
Glendale Optical Co., Inc.  
Great Lakes Chemical Div.  
Martindale Electric Co.  
Mine Safety Appliances Co.  
Pulmosan Safety Equipment Corp.  
Scott Aviation Corp.  
**The Vandermolen Co.**  
Willson Products Div.

#### ROLLER-SPRAYERS

Lakes Supply Co., Inc.

#### ROLLERS, TURF

**Brillion Iron Works, Inc.**  
John H. Graham & Co., Inc.  
Gravelly Tractors  
**International Harvester Co.**  
Rogers Mfg. Co., Inc.  
Rosco Manufacturing Co.  
**Ryan Equipment Co.**  
Simplicity Mfg. Co., Inc.  
Sun Industry, Inc.

#### ROOT-FEEDING RODS

**John Bean Div., FMC Corp.**  
**The J. J. Dill Co.**  
Dobbins Div., Chamberlain Mfg.  
Corp.  
Hydroponic Chemical Co., Inc.  
Minnesota Wanner Co.

#### SAFETY BELTS AND SADDLES, TREE CLIMBERS

Bartlett Mfg. Co.  
W. M. Bashlin Co.  
Mine Safety Appliances Co.  
Safety Test & Equipment Co., Inc.

#### SAFETY EQUIPMENT

Acme Protection Equipment Corp.  
American Optical Co.  
Bartlett Mfg. Co.  
**John Bean Div., FMC Corp.**  
Charleston Rubber Co.  
Glendale Optical Co.  
Great Lakes Chemical Div.  
Mine Safety Appliances Co.  
Pulmosan Safety Equipment Corp.  
Safety Test & Equipment Co., Inc.  
Scott Aviation Corp.

#### SAWS, CHAIN

Homelite Div., Textron Inc.  
New World Products Co., Inc.



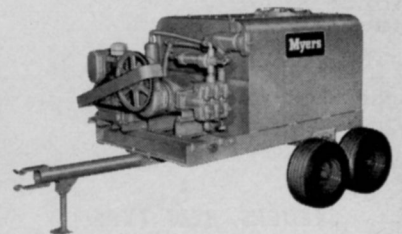
100TM - Tractor-Mounted, 100 Gallon, PTO Sprayer

*The Myers 100TM GlasStran<sup>®</sup>  
Sprayer is one more reason why...*

# You'll Profit from Our Experience!

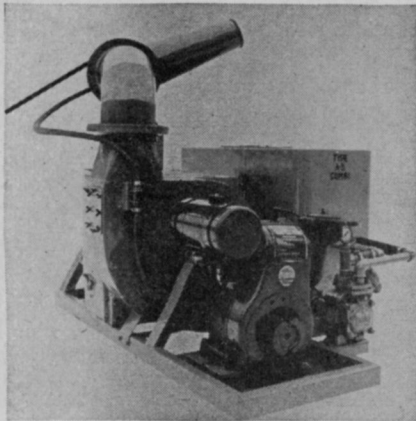
Pioneering new ideas is an old story at Myers. We've had lots of experience at it... the 100TM, Myers exclusive GlasStran Sprayer, is a good example. It has proved an instant success. Professional applicators find it to be the ideal answer for a lightweight, easy-to-handle rig that holds up under the most rough-and-tumble conditions. Complete with 12, 6 or 3 GPM pump, mechanical agitator, sight gauge and many other features. Get the facts about the 100TM, call your Myers Dealer today!

**6520-4ET2.** While you're at it... ask about this new Myers Series with "pillows of air" running gear. It's another Myers high quality, high pressure (20 gpm, 400 psi) sprayer that fits a wide range of applications.



**Myers** ...the finest name in power sprayers

**THE F. E. MYERS & BRO. CO.** SUBSIDIARY OF  
400 ORANGE STREET • ASHLAND, OHIO 44805 **McNEIL CORPORATION**



# There's a KWH MISTBLOWER-DUSTER

COMBINATION FOR EVERY JOB

Mosquito Control

Weed Control — Insect Control

◀ KWH Model A-3

KWH 26 TT ▶

Spray, dust, wet dust and apply granules with the same machine; no extra attachments needed.

KWH — Full line of spraying and dusting equipment.

BUILT BETTER to LAST LONGER

CONTACT YOUR DEALER OR WRITE

**The VANDERMOLLEN CO.**

378 Mountain Ave., North Caldwell, N.J. 07006



## SAWS, MANUAL

Bartlett Mfg. Co.  
John Bacon Corp.  
W. M. Bashlin Co.  
The Fanno Saw Works  
John H. Graham & Co., Inc.  
Safety Test & Equipment Co., Inc.  
Seymour Smith & Son, Inc.  
Wright Saw Div.

## SAWS, POWER

American-Lincoln Corp.  
John Bacon Corp.  
The Black & Decker Mfg. Co.  
L. M. Cox Mfg. Co., Inc.  
Fairmont Hydraulics  
Fanno Saw Works  
Great Lakes Chemical Div.  
Hallline Utility Equipment Co.  
Hoffco, Inc.  
Homelite Div., Textrone, Inc.  
Hunt-Pierce Corp.  
McCulloch Corp.  
Miller-Robinson Co.  
New World Products Co., Inc.  
Pioneer Saws, Ltd.  
Pitman Mfg. Co.  
Remington Arms Co., Inc.  
Rowco Mfg. Co., Inc.  
Solo Industries, Inc.  
Stihl American, Inc.  
The Sun-Mastr Corp.  
Thor Power Tool Co.  
Wright Saw Div.

## SAWS, CHAIN, PARTS

Omark Industries, Inc.  
Pioneer Saws, Ltd.

## SCRAPERS

BMB Company  
Deere & Co.  
Gravely Tractors  
International Harvester Co.

## SCREENERS, SOIL

Lindig Manufacturing, Inc.

## SCYTHES

Hoffco, Inc.

## SEEDERS, BELT TYPE

John Bean Div., FMC Corp.

## SEEDERS, DISK TYPE

International Harvester Co.  
Vandermolen Export Co.

## SEEDERS, HOPPER TYPE

Brettrager Manufacturing

Brillion Iron Works, Inc.  
The Cyclone Seeder Co., Inc.  
Deere & Co.  
The J. J. Dill Co.  
Gandy Co.  
Garber Seeders, Inc.  
Gravely Tractors  
International Harvester Co.  
Larson Machine, Inc.  
Rogers Mfg. Co., Inc.  
Schneider Metal Mfg. Co.  
Sunnyhill Research & Mfg. Co.

## SEEDERS, HYDRAULIC

Reinco Inc.

## SEEDERS, SOD

Brillion Iron Works, Inc.

## SHEARS

John Bacon Corp.  
Bartlett Mfg. Co.  
John H. Graham & Co., Inc.  
Melnor Industries, Inc.  
H. K. Porter, Inc.  
Seymour Smith & Son, Inc.

## SHREDDERS, SOIL

Kemp Mfg. Co.  
Lindig Manufacturing, Inc.  
Royer Foundry & Machine Co.  
W-W Grinder Corp.

## SICKLE BAR MOWER

Deere & Co.  
Engineering Products Co.  
Ford Motor Co., Tractor Div.  
Gravely Tractors  
International Harvester Co.  
Solo Industries, Inc.

## SOD CUTTERS

Finland Turf Cut Div.  
James-Way Equipment Co.  
Ryan Equipment Co.  
Sodmaster

## SOD HARVESTERS

John Nunes Mechanical Harvesting Co.

## SOD PLUGGER

James-Way Equipment Co.  
West Point Products Corp.

## SOD ROLLER

Hadfield Sod Roller Co.  
Merion Sod Farms, Inc.

## SOIL TESTERS

Contree Sales, Inc.

Hydroponic Chemical Co., Inc.  
Kel Instruments Co., Inc.  
LaMotte Chemical Products Co.  
Sudbury Laboratory

## SPIKERS

John H. Graham & Co., Inc.  
Rogers Mfg. Co., Inc.  
Ryan Equipment Co.  
West Point Products Corp.

## SPRAY BOOMS

Ampulco (Hardie)  
John Bacon Corp.  
John Bean Div., FMC Corp.  
The Broyhill Co.  
Century Engineering Corp.  
Contree Sales, Inc.  
Custom Spray Equipment Corp.  
Dempster Industries, Inc.  
The J. J. Dill Co.  
Farmrite Sprayer, Inc.  
Friend Manufacturing Corp.  
Great Lakes Chemical Div.  
Green Lawn Laboratories, Inc.  
Hanson Equipment Co.  
H. D. Hudson Mfg. Co.  
Larson Machine, Inc.  
Mallinckrodt Chemical Works  
F. E. Myers & Bro. Co.  
Oakes Mfg. Co., FMC Corp.  
Rear's Mfg. Co.  
Root-Lowell Corp.  
Thuron Sprayer Mfg. Co.  
Tote Systems Div.  
Tryco Mfg. Co., Inc.  
Walsh Manufacturing Co.

## SPRAY GUNS

Ampulco (Hardie)  
John Bacon Corp.  
John Bean Div., FMC Corp.  
The Broyhill Co.  
Century Engineering Corp.  
Contree Sales, Inc.  
Delavan Manufacturing Co.  
DeVilbiss Co.  
The J. J. Dill Co.  
Farmrite Sprayer, Inc.  
Friend Manufacturing Corp.  
Gotcher Engineering & Mfg. Co.  
Great Lakes Chemical Div.  
Green Lawn Laboratories, Inc.  
Hanson Equipment Co.  
H. D. Hudson Mfg. Co.  
Hydroponic Chemical Co., Inc.  
Larson Machine, Inc.  
Melnor Industries, Inc.  
F. E. Myers & Bro. Co.  
Oakes Mfg. Co., FMC Corp.  
Root-Lowell Corp.  
Silver Creek Precision Corp.

Spraying Systems Co.  
Wm. Steinen Mfg. Co.  
The Thompson Manufacturing Co.  
Thuron Sprayer Mfg. Co.  
Tryco Mfg. Co., Inc.  
**Universal Metal Products Div.**  
Walsh Manufacturing Co.

#### SPRAY NOZZLES, COMPLETE

W. D. Allen Mfg. Co.  
John Bacon Corp.  
**John Bean Div., FMC Corp.**  
The Broyhill Co.  
**Buffalo Turbine Equipment Co.**  
Century Engineering Corp.  
Contree Sales, Inc.  
Delavan Manufacturing Co.  
DeVilbiss Co.  
**The J. J. Dill Co.**  
Farmrite Sprayer, Inc.  
**Friend Manufacturing Corp.**  
Gotcher Engineering & Mfg. Co.  
Great Lakes Chemical Div.  
Green Lawn Laboratories, Inc.  
Hanson Equipment Co.  
H. D. Hudson Mfg. Co.  
Larson Machine, Inc.  
Monarch Mfg. Works, Inc.  
**F. E. Myers & Bro. Co.**  
Oakes Mfg. Co., FMC Corp.  
Root-Lowell Corp.  
Spraying Systems Co.  
Wm. Steinen Mfg. Co.  
The Thompson Manufacturing Co.  
Thuron Sprayer Mfg. Co.  
Tryco Mfg. Co., Inc.  
Walsh Manufacturing Co.

#### SPRAY NOZZLES, DISKS

W. D. Allen Mfg. Co.  
John Bacon Corp.  
**John Bean Div., FMC Corp.**  
The Broyhill Co.  
Century Engineering Corp.  
Delavan Manufacturing Co.  
**The J. J. Dill Co.**  
Farmrite Sprayer, Inc.  
**Friend Manufacturing Corp.**  
Gotcher Engineering & Mfg. Co.  
Green Lawn Laboratories, Inc.  
Hanson Equipment Co.  
Larson Machine, Inc.  
**F. E. Myers & Bro. Co.**  
Oakes Mfg. Co., FMC Corp.  
Spraying Systems Co.  
Wm. Steinen Mfg. Co.  
Thuron Sprayer Mfg. Co.  
**The Vandermolen Co.**  
Walsh Manufacturing Co.

#### SPRAY NOZZLES, WHIRLS

W. D. Allen Mfg. Co.  
John Bacon Corp.  
**John Bean Div., FMC Corp.**

The Broyhill Co.  
Century Engineering Corp.  
**The J. J. Dill Co.**  
Farmrite Sprayer, Inc.  
**Friend Manufacturing Corp.**  
Great Lakes Chemical Div.  
Green Lawn Laboratories, Inc.  
Larson Machine, Inc.  
**F. E. Myers & Bro. Co.**  
Oakes Mfg. Co., FMC Corp.  
Spraying Systems Co.  
Walsh Manufacturing Co.

#### SPRAY PUMPS

Hypro, Inc.

#### SPRAY RIG LINE MARKERS

The Broyhill Co.  
Contree Sales, Inc.  
Great Lakes Chemical Div.  
Green Lawn Laboratories, Inc.  
H. D. Hudson Mfg. Co.

#### SPRAYER, BIFLUID

**John Bean Div., FMC Corp.**  
The Broyhill Co.  
**Buffalo Turbine Equipment Co.**  
Dobbins Div., Chamberlain Mfg. Corp.  
Farmrite Sprayer, Inc.  
Finn Equipment Co.  
Great Lakes Chemical Div.  
Minnesota Wanner Co.  
**Stull Chemical Co.**

#### SPRAYERS, BOOM

Ag-King (Div. of TAGS)  
Ampulco (Hardie)  
Amchem Products, Inc.  
John Bacon Corp.  
**John Bean Div., FMC Corp.**  
John Blue Co., Inc.  
The Broyhill Co.  
Century Engineering Corp.  
Contree Sales  
Cushman Motors  
Deere & Co.  
Dempster Industries Inc.  
**The J. J. Dill Co.**  
Dobbins Div., Chamberlain Mfg. Corp.  
Farmrite Sprayer, Inc.  
**Friend Manufacturing Corp.**  
Gotcher Engineering & Mfg. Co.  
Great Lakes Chemical Div.  
Green Lawn Laboratories, Inc.  
Hanson Equipment Co.  
Heckendorn Mfg. Co., Inc.  
H. D. Hudson Mfg. Co.  
Larson Machine, Inc.  
**F. E. Myers & Bro. Co.**  
Rear's Mfg. Co.  
Root-Lowell Corp.  
Sun Industry, Inc.

Thuron Sprayer Mfg. Co.  
Tryco Mfg. Co., Inc.  
Walsh Manufacturing Co.

#### SPRAYERS, CART OR WHEELBARROW TYPE

Ampulco (Hardie)  
**John Bean Div., FMC Corp.**  
The Broyhill Co.  
Champion Sprayer Co.  
R. E. Chapin Mfg. Works, Inc.  
Deere & Co.  
**The J. J. Dill Co.**  
Dobbins Div.  
Farmrite Sprayer, Inc.  
Great Lakes Chemical Div.  
Hanson Equipment Co.  
H. D. Hudson Mfg. Co.  
Larson Machine, Inc.  
**F. E. Myers & Bro. Co.**  
Root-Lowell Corp.  
D. B. Smith & Co.  
Sun Industry, Inc.  
Thuron Sprayer Mfg. Co.  
**Universal Metal Products Div.**

#### SPRAYERS, COMPLETE POWER UNIT

Ag-King (Div. of TAGS)  
Ampulco (Hardie)  
John Bacon Corp.  
**John Bean Div., FMC Corp.**  
Besler, Div. of C-C Industries  
John Blue Co., Inc.  
R. H. Bogle Co.  
Bowie Machine Works, Inc.  
The Broyhill Co.  
**Buffalo Turbine Ag. Equip. Co.**  
Century Engineering Corp.  
Champion Sprayer Co.  
R. E. Chapin Mfg. Works, Inc.  
Cushman Motors  
Deere & Co.  
**The J. J. Dill Co.**  
Dobbins Div.  
Farmrite Sprayer, Inc.  
**Friend Manufacturing Corp.**  
Gravelly Tractors  
Great Lakes Chemical Div.  
Green Lawn Laboratories, Inc.  
Hanson Equipment Co.  
H. D. Hudson Mfg. Co.  
Larson Machine, Inc.  
Marlow Pumps Div.  
Minnesota Wanner Co.  
**F. E. Myers & Bro. Co.**  
Oakes Mfg. Co., FMC Corp.  
Rear's Mfg. Co.  
Root-Lowell Corp.  
Silver Creek Precision Corp.  
Solo Industries, Inc.  
Sun Industry, Inc.  
Tarrant Mfg. Co.  
The Thompson Manufacturing Co.

## Better Roadside Maintenance with



HY-RIDE delivers an effective 50-ft. spray pattern for thorough coverage of shoulders, thruway interchanges, back-slopes, etc. The only triple-arm, fully articulated roadside boom, it's hydraulically operated, and its construction allows for easy clearance of signs, posts, and railings.

Also a Complete Line of Roadside Sprayers Available.

For further details write

**FRIEND MFG. CORP.**  
GASPORT, NEW YORK

Thuron Sprayer Mfg. Co.  
Tryco Mfg. Co., Inc.  
**Universal Metal Products Div.**  
**The Vandermolen Co.**  
Walsh Mfg. Co.

#### **SPRAYERS, COMPRESSED AIR**

**John Bean Div., FMC Corp.**  
R. E. Chapin Mfg. Works, Inc.  
DeVilbiss Co.  
**The J. J. Dill Co.**  
The C. B. Dolge Co.  
Great Lakes Chemical Div.  
H. D. Hudson Mfg. Co.  
Larson Machine, Inc.  
Oakes Mfg. Co., FMC Corp.  
Root-Lowell Corp.  
D. B. Smith & Co.  
Solo Industries, Inc.  
Tryco Mfg. Co., Inc.  
**Universal Metal Products Div.**

#### **SPRAYERS, HAND**

Ag King (Div. of TAGS)  
Ampulco (Hardie)  
Bartlett Mfg. Co.  
**John Bean Div., FMC Corp.**  
**Buffalo Turbine Ag. Equip. Co.**  
Century Engineering  
Champion Sprayer Co.  
R. E. Chapin Mfg. Works, Inc.  
**The J. J. Dill Co.**  
Deere & Co.  
The C. B. Dolge Co.  
Great Lakes Chemical Div.  
Green Lawn Laboratories, Inc.  
H. D. Hudson Mfg. Co.  
Hydroponic Chemical Co., Inc.  
Larson Machine, Inc.  
Melnor Industries, Inc.  
Oakes Mfg. Co., FMC Corp.  
Root-Lowell Corp.

Silver Creek Precision Corp.  
D. B. Smith & Co.  
Smith-Douglass Div., Borden Chem.  
Solo Industries, Inc.  
The Thompson Manufacturing Co.  
Tradewinds, Inc.  
Tryco Mfg. Co., Inc.  
**Universal Metal Products Div.**  
**The Vandermolen Co.**  
Walsh Manufacturing Co.

#### **SPRAYERS, HOSE END**

W. D. Allen Mfg. Co.  
Ampulco (Hardie)  
John Bacon Corp.  
**John Bean Div., FMC Corp.**  
Century Engineering Corp.  
R. E. Chapin Mfg. Works, Inc.  
**The J. J. Dill Co.**  
Great Lakes Chemical Div.  
Green Lawn Laboratories, Inc.  
Hayes Spray Gun Co.  
H. D. Hudson Mfg. Co.  
Hydroponic Chemical Co., Inc.  
Larson Machine, Inc.  
Melnor Industries, Inc.  
Smith-Douglass Div., Borden Chem.  
Thuron Sprayer Mfg. Co.  
Tryco Mfg. Co., Inc.  
**Universal Metal Products Div.**  
Walsh Mfg. Co.

#### **SPRAYERS, KNAPSACK**

Bartlett Mfg. Co.  
**John Bean Div., FMC Corp.**  
**Buffalo Turbin Equipment Co.**  
Champion Sprayer Co.  
**The J. J. Dill Co.**  
Great Lakes Chemical Div.  
Green Lawn Laboratories, Inc.  
Hanson Equipment Co.  
H. D. Hudson Mfg. Co.

Ben Meadows Co.  
Oakes Mfg. Co., FMC Corp.  
Parco Products Co.  
Root-Lowell Corp.  
D. B. Smith & Co.  
Solo Industries, Inc.  
Tradewinds, Inc.  
**Universal Metal Products Div.**  
**The Vandermolen Co.**

#### **SPRAYERS, MOBILE TURF**

Mallinckrodt Chemical Works

#### **SPREADERS, DISC-TYPE**

Great Lakes Chemical Div.  
Larson Machine, Inc.  
Northrup, King & Co.  
Smith-Douglass Div., Borden Chem.  
Tarrant Mfg. Co.  
Tyler Corp.  
**The Vandermolen Co.**

#### **SPREADERS, HOPPER-TYPE**

Brettrager Manufacturing  
Champion Sprayer Co.  
The Cyclone Seeder Co., Inc.  
Dempster Industries, Inc.  
**The J. J. Dill Co.**  
Fence Painter Corp.  
Gandy Co.  
Garber Seeders, Inc.  
Gotcher Engineering & Mfg. Co.  
Gravely Tractors  
Great Lakes Chemical Div.  
Highway Equipment Co.  
**International Harvester Co.**  
Larson Machine, Inc.  
Schneider Metal Mfg. Co.  
Smith-Douglass Div., Borden Chem.  
Sunnyhill Research & Mfg. Co.  
Tarrant Mfg. Co.

“Bluegrass on the rocks...  
not a drink,  
but the conditions  
we like to cut  
turf in”

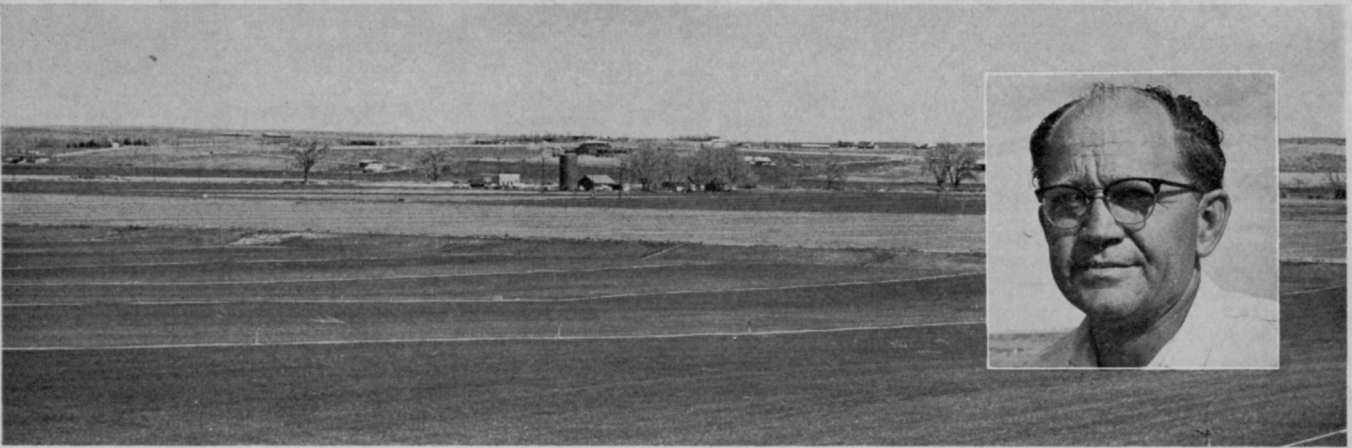


FOR PRODUCTION SOD CUTTING—this turf cutter is designed and built to cut in rocky as well as normal conditions. It is built to withstand hard use, combining the oscillating blade of the small cutters with the dry ground advantages of the old style drag cutters. This cutter has yielded up to 30 square yards per min-

ute or 3 acres a day. Our turf cutter will fit most popular 3 point hitch systems, especially those tractors with large flotation tires. At your request we will loan you our 8 mm color film of this cutter in action.

**FINLAND TURF CUT**

Division of Finneyrock's, Oley, Maryland



Melvin C. Rich, Richlawn Turf Farm, Littleton, Colorado

## WITH A ROTAVATOR . . . "Germination is Better, Stands Superior"

"The Rotavator has definitely increased our turf yields . . . germination is better, stands superior, and we have fewer bare spots than we used to. We figure that our Rotavator saves from 30% to 40%

in operating costs over conventional equipment." Melvin Rich, of Richlawn Turf Farm, knows what a Rotavator can do for him. Fill out this coupon and see what a Rotavator can do for you.



WORLD LEADER IN ROTARY TILLAGE<sup>®</sup>

HOWARD ROTAVATOR  
COMPANY INC.  
Dept. 150, Harvard, Ill. 60033

Please send latest information.

Name \_\_\_\_\_ Address \_\_\_\_\_  
 City \_\_\_\_\_ State \_\_\_\_\_ Zip \_\_\_\_\_  
 No. acres I till \_\_\_\_\_ tractor model(s) \_\_\_\_\_

Tryco Mfg. Co., Inc.  
Tyler Corp.  
The Vandermolen Co.

### SPRIGGERS

Bowie Machine Works  
James-Way Equipment Co.  
Thompson Equipment Co.  
Wichita Equipment Co.

### STONE PICKER

Armor Metal Products  
Bridgeport Implement Works, Inc.  
Rogers Mfg. Co., Inc.

### STUMP CUTTERS

Arps Corp.  
Brooks Products Div.  
H & G Tool Co.  
International Harvester Co.  
Vermeer Manufacturing Co.

### SWEEPERS

J. I. Case Co.  
Deere & Co.  
Gravely Tractor Div.  
International Harvester Co.  
Melroe Mfg. Co.  
Parker Sweeper Co.  
Rogers Mfg. Co., Inc.  
Wayne Manufacturing Co.

### TANKS, SPRAY

John Bacon Corp.  
John Bean Div., FMC Corp.  
The Broyhill Co.  
Century Engineering Corp.  
Cintree Sales  
The J. J. Dill Co.  
Farmrite Sprayer, Inc.  
Friend Manufacturing Corp.  
Gotcher Engineering & Mfg. Co.

Green Lawn Laboratories, Inc.  
Hanson Equipment Co.  
H. D. Hudson Mfg. Co.  
Larson Machine, Inc.  
F. E. Myers & Bro. Co.  
Rear's Mfg. Co.  
Thuron Sprayer Mfg. Co.  
Tryco Mfg. Co., Inc.  
Universal Metal Products Div.  
Walsh Manufacturing Co.

### TILLERS

Allis-Chalmers Mfg. Co.  
Ariens Co.  
John Bean Div., FMC Corp.  
Bolens Div., FMC Corp.  
Deere & Co.  
Engineering Products Co.  
Gravely Tractors  
Howard Rotavator Co., Inc.  
International Harvester Co., Inc.  
Jacobsen Mfg. Co.  
Quick Manufacturing, Inc.  
Rogers Mfg. Co., Inc.  
Roseman Mower Corp.  
Simplicity Mfg. Co., Inc.  
Solo Industries, Inc.  
Yazoo Mfg. Co., Inc.

### TIRES, FLOTATION

Martin Tire & Supply Co.

### TOP DRESSERS

Ryan Equipment Co.  
Sodmaster

### TRACTORS

Allis-Chalmers Mfg. Co.  
Bolens Div., FMC Corp.  
J. I. Case Co.  
Caterpillar Tractor Co.  
Deere & Co.

Devere-Locke Div., Locke Mfg. Co.  
Erickson Corp.  
Engineering Products Co.  
Ford Motor Co.  
Gravely Tractors  
Homelite Div., Textron, Inc.  
International Harvester Co.  
Jacobsen Mfg. Co.  
Locke Mfg. Cos., Inc.  
Massey-Ferguson, Inc.  
Meadow Bros. Nursery Supplies  
Melroe Mfg. Co.  
Oliver Corp.  
Quick Manufacturing, Inc.  
Simplicity Mfg. Co., Inc.  
Speedex Tractor Co.  
Toro Manufacturing Corp.  
Tradewinds, Inc.

### TRAILERS

Deere & Co.  
Rogers Mfg. Co., Inc.  
Trailevator Div., Magline Inc.

### TREE INJECTORS

Cranco Co.  
Panama Pump Co.  
Tree-Ject Co.

### TREE MOVERS

Ideal Crane Div.  
International Harvester Co.  
Vermeer Manufacturing Co.

### TREE TIES

Dairymens Fertilizer Co-op, Inc.  
Fertilla Co.

### TREE WRAPPINGS

American Excelsior Corp.  
John Bacon Corp.  
Bartlett Mfg. Co.

## TRENCHER

Vermeer Mfg. Co.

## TRIMMING (EDGING) TOOLS

Allegretti & Co.  
Bartlett Mfg. Co.  
The Black & Decker Mfg. Co.  
L. M. Cox Mfg. Co., Inc.  
Gale Products  
John H. Graham & Co., Inc.  
Jacobsen Mfg. Co.  
Melnor Industries, Inc.  
Seymour Smith & Son, Inc.  
Sodmaster  
Yazoo Mfg. Co., Inc.

## TRUCKS, ELECTRIC

Meadows Bros. Nursery Supplies

## UNDERWATER WEED CUTTER

Aquanautics, Inc.  
Aquatic Controls Corp.  
The Vandermolen Co.

## UNDERWATER WEED RAKE

Aquanautics, Inc.  
Aquatic Controls Corp.

## UTILITY VEHICLES

Allis-Chalmers Mfg. Co.

### Suppliers Listed in

### Boldface Type

### Have Advertisements

### in this issue.

### We Suggest You Read Them.

Aquanautics, Inc.  
Cushman Motors  
Gravelly Tractors  
**International Harvester Co.**  
Rogers Mfg. Co., Inc.  
Tryco Mfg. Co., Inc.  
Walker Mfg. Co.  
West Point Products Corp.

## VACUUMS

Allis-Chalmers Mfg. Co.  
Ariens Co.  
The Black & Decker Mfg. Co.  
Deere & Co.  
Parker Sweeper Co.  
Simplicity Mfg. Co., Inc.  
Tarrant Mfg. Co.

## VERTICAL SLITTERS, TURF

Rental Equipment Mfg. Co.  
**Ryan Equipment Co.**

## WASHERS

Century Engineering Corp.  
Walsh Mfg. Co.

## WINCH (HOIST)

Fairmont Hydraulics  
Halline Utility Equipment Co.  
Hoffco, Inc.  
Ideal Crane Div.  
**International Harvester Co.**  
McCabe-Powers Body Co.

## Alphabetical Listing of Suppliers

in this Buyer's Guide

with their

Complete Addresses

### A

Ace Pump Corp.  
1650 Channel Ave., Memphis, Tenn.  
Aceto Chemical Co., Inc.  
126-02 Northern Blvd.  
Flushing, N.Y. 11368  
Acme Protection Equipment Corp.  
1210 Kalamazoo St.,  
South Haven, Mich. 49090  
Adamson Sprinkler Co.,  
2229 Barry Ave.,  
West Los Angeles, Calif.  
The John B. Adt Co., 110 W.  
Timonium Rd., Timonium, Md.  
Ag-King (Div. of TAGS)  
Box 7, Preston, Md. 21655  
Agrico Chemical Co.,  
Div. of Continental Oil Co.,  
P.O. Box 346, Memphis, Tenn.  
Agriform International Chemicals,  
Inc.  
P.O. Box 323, Newark, Calif. 94560  
Allegretti & Co., 7232 Fulton Ave.,  
North Hollywood, Calif.  
W. D. Allen Mfg. Co.,  
2200 W. 16th St., Broadview, Ill.  
Allied Biological Control Corp.,  
192 Worcester St., Wellesley Hills,  
Mass. 02181  
Allied Chemical Corp.,  
40 Rector St., New York, N.Y.  
10006  
Allis-Chalmers Mfg. Co.,  
Box 512, Milwaukee, Wis.  
Amchem Products, Inc., Ambler, Pa.  
19002  
American Cyanamid Co., Ag. Div.  
P.O. Box 400, Princeton, N.J.  
American Excelsior Corp.  
850 Ave. H East, Arlington, Tex.  
76010  
American-Lincoln Corp.  
518 S. St. Clair St., Toledo, Ohio  
American Oil Co.,  
910 S. Michigan Ave., Chicago, Ill.  
American Optical Co.  
Southbridge, Mass.  
American Potash & Chemical Corp.,  
3000 W. 6th St., Los Angeles, Calif.  
American Talc Co., Chatsworth, Ga.  
American Vermiculite Corp.,  
527 Madison Ave., New York, N.Y.  
Ampulco (Hardie)  
4200 Wissahickon Ave.,  
Philadelphia, Pa. 19129  
The Ansul Co., 1 Stanton St.  
Marinette, Wis. 54143  
Aquanautics, Inc., 1246 Birchwood  
Dr., Sunnyvale, Calif. 94086  
Aquatic Controls Corp., 1203 E. Main,  
Waukesha, Wis. 53186  
Aquatrols Corp. of America, 217  
Atlantic Ave., Camden, N.J. 08104  
Ariens Co., 655 W. Ryan,  
Brillion, Wis. 54110

Arlo Industries, Inc.,  
Bear Mt. Parkway at Arlo Lane,  
Peekskill, N.Y. 10566  
Armor Metal Products, Box 822  
Helena, Mont. 59601  
Armour Agricultural Chemical Co.  
P.O. Box 1685, Atlanta, Ga. 30301  
Arps Corp., New Holstein, Wis. 53061  
Asgrow Seed Co.,  
P.O. Box 70, Northvale, N.J.  
Asplundh Chipper Co.,  
Hamilton St., Chalfont, Pa.  
Atlas Chemical Industries, Inc.,  
Wilmington, Del.  
Aurora Pump Div.,  
New York Air Brake Co.,  
Loucks at Dearborn, Aurora, Ill.

### B

John Bacon Corp.,  
State St., Gasport, N.Y. 14067  
Bartlett Mfg. Co., 3003 E. Grand  
Blvd., Detroit, Mich. 48202  
W. M. Bashlin Co., 119 W. Pine St.,  
Grove City, Pa. 16127  
**John Bean Div., FMC Corp.,** 1305 S.  
Cedar St., Lansing, Mich. 48910  
**John Bean Div., FMC Corp.,** P.O. Box  
145, San Jose, Calif. 95103  
**John Bean Div., FMC Corp.,**  
516 Dearborn, Tipton, Ind. 46072  
Bell Helicopter Co.,  
P.O. Box 482, Fort Worth, Texas  
Besler, A Div. of C-C Industries,  
4053 Harlan St., Emeryville, Calif.  
Best Fertilizers Co.,  
1459 3rd St., Oakland, Calif.  
Bioferm Corp., Wasco, Calif.  
The Black & Decker Mfg. Co.,  
Joppa Rd., Towson, Md. 21204  
John Blue Co., Inc.,  
P.O. Box 1607, Huntsville, Ala.  
BMB Co., Inc.,  
Box 350, Holton, Kans.  
The R. H. Bogle Co., P.O. Box 588,  
Alexandria, Va. 22313  
Bolens Div., FMC Corp., 215 S. Park  
St., Port Washington, Wis. 53074  
Bonide Chemical Co., Inc.,  
382 N. Genesee St., Utica, N.Y.  
Bowie Machine Works, Inc.,  
P.O. Box 630, Bowie, Tex. 76230  
Bretrager Manufacturing,  
5410 East St., Saginaw, Mich.  
Bridgeport Implement Works, Inc.,  
P.O. Box 491, Stratford, Conn.  
06497  
**Brillion Iron Works, Inc.,**  
Brillion, Wis. 54110  
Brooks Products Div., The Tool Steel  
Gear & Pinion Co., 211 Township  
Ave., Cincinnati, Ohio  
The Broyhill Co.,  
Dakota City, Nebraska 68731  
Buckner Industries, Inc.,  
P.O. Box 232, Fresno, Calif.  
**Buffalo Turbine Agricultural Equip. Co.,**  
**Inc.,** Industrial St., Gowanda, N.Y.  
14070  
Burton Supply Co., Inc.,  
1301 Logan Ave., Youngstown, Ohio

### C

Samuel Cabot, Inc., 246 Summer St.,  
Boston, Mass. 02210  
Canlin Sales Co., P.O. Box 489,  
Somerville, N.J. 08876  
J. I. Case Co.,  
700 State St., Racine, Wis. 53404  
Caterpillar Tractor Co.,  
Peoria, Ill.



Century Engineering Corp., 221-4th Ave. S.E., Cedar Rapids, Iowa 52401  
Certain-teed Products Corp., 25 Skippack Pike, Ambler Pa. 19002

Central Solvents & Chemicals Co., 2540 W. Flournoy St., Chicago, Ill.  
Cessna Aircraft Co., Wichita, Kans.

Champion Sprayer Co., 6509 Heintz Ave., Detroit, Mich.

Chanderlin Seed Co., Chimney Rock Rd., Bound Brook, N.J.

R. E. Chapin Mfg. Works, Inc., 29 Liberty St., Batavia, N.Y. 14020

Chapman Chemical Co., 416 Brooks Rd., Memphis, Tenn. 38109

Charleston Rubber Co., 321 Stark Industrial Pk., Charleston, S.C.

Chemagro Corp., Hawthorn Rd., Kansas City, Mo. 64120

Chemley Products Co., 5744 N. Western Ave., Chicago, Ill.

Chevron Chemical Co., Ortho Div., 200 Bush St., San Francisco, Calif.

Chipman Chemical Co., Inc., 1801 Murchison Dr., Burlingame, Calif.

W. A. Cleary Corp., Box 749, New Brunswick, N.J. 08903

Cloro-Spray Corp., 2215-25 N. American St., Phila., Pa.

Collins Associates, Inc., 3318 Glenmore Ave., Cincinnati, O. 45211

Colloidal Products Corp., P.O. Box 667, Sausalito, Calif. 94965

Columbia Nitrogen Corp., P.O. Box 1483, Augusta, Ga.

Commercial Solvents Corp., 260 Madison Ave., New York, N.Y.

Contree Sales, P.O. Box 129, Columbus, Wis. 53925

L. M. Cox Manufacturing, Inc., P.O. Box 476, Santa Ana, Calif. 92702

Cranco Co., 7 Clermont Ave., Trenton, N.J.

Cushman Motors, 900 N. 21st St., Lincoln, Nebr.

Custom Spray Equipment Corp., R.D. #2, Binghamton, N.Y.

The Cyclone Seeder Co., Inc., Box 68, Urbana, Ind. 46990

## D

Dairymens Fertilizer Co-op, Inc., P.O. Box 998, Artesia, Calif.

Danuser Machine Works, 1500 Industrial Blvd., Claremore, Okla.

Davison Chemical Div., W. R. Grace & Co., 101 N. Charles St., Baltimore, Md.

Deere & Co., John Deere Equipment, John Deere Administrative Center, John Deere Rd., Moline, Ill. 61265

DEFCO, P.O. Box 1209, Decatur, Ala. 35601

Delavan Manufacturing Co., 811-4th St., W. Des Moines, Iowa 50265

DeVilbiss Co., 300 Phillips Ave., Toledo, Ohio

Diamond Alkali Co., 300 Union Commerce Bldg., Cleveland Ohio 44115

**The J. J. Dill Co.**, P.O. Box 788, Kalamazoo, Mich. 49005

Dobbins Div., Chamberlain Mfg. Corp., Box 610, Monroe, Ga. 30655

The C. B. Dolge Co., Ferry Lane, Westport, Conn.

The Dow Chemical Co., P.O. Box 512, Midland, Mich. 48640

E. I. duPont de Nemours & Co., Inc. Industrial & Biochemical Div., 1007 Market St., Wilmington, Del. 19898

## E

Eagle-Picher Industries, Inc., American Bldg., Cincinnati, O. 45201

Eastman Chemical Products, Inc., P.O. Box 431, Kingsport, Tenn. 37622

**Elanco Products Co.**, 740 S. Alabama St., P.O. Box 1968, Indianapolis, Ind. 46205

Emery Industries, Inc., Organic Chemicals Div., 8733 S. Dice Rd., Santa Fe Springs, Calif.

Engelhard Minerals & Chemicals, Essex Turnpike, Menlo Park, Edison, N.J. 08817

Engineering Products Co., 1005-HF Anoka St., Waukesha, Wis. 53186

Erickson Corp., 211 St. Anthony Blvd., Minneapolis, Minn.

Excel Industries, Inc. Box 385, Hesston, Kan. 67602

## F

Faesy & Besthoff, Inc., 143 River Rd., Edgewater, N.J.

Fairmont Hydraulics, Div. of Fairmont Railway Motors, Inc., 415 N. Main St., Fairmont, Minn. 56031

The Fanno Saw Works, P.O. Box 628, Chico, Calif. 95926

Farmrite Sprayer, Inc., 644 E. Lake St., Lake Mills, Wis. 53551

Farris Chemical Co., 7213 Kingston Pike, Knoxville, Tenn.

Fence Painter Corp., 4335 S. Tripp Ave., Chicago, Ill. 60632

Ferry-Morse Seed Co., P.O. Box 100, Mountain View, Calif. 94040

Fertilla Co., P.O. Box 998, Cerritos Calif. 90701

**Finland Turf Cut Div., Finneyfrock's**, 1805 Ga Ave., Olney, Md. 20832

Finn Equipment Co., 2525 Duck Creek Rd., Cincinnati, Ohio

Fitchburg Engineering Corp., Chipper Div., Cleghorn St., Fitchburg, Mass.

Floridin Co., 375 Park Ave., New York, N.Y. 10022

Ford Motor Co., Tractor & Implement Div., 2500 E. Maple, Birmingham, Mich. 48012

**Friend Manufacturing Corp.**, Prospect St., Gasport, N.Y. 14067

## G

Gabriel Chemicals, Ltd., 60 E. 42 St., New York, N.Y. 10017

Gale Products, Monmouth Blvd., Galesburg, Ill. 61401

Gandy, Co., 10 Gandrud Rd., Owatonna, Minn. 55060

Garber Seeders, Inc., St. Paris, Ohio

Geigy Agricultural Chemicals, Div. of Geigy Chemicals Corp., Saw Mill River Rd., Ardsley, N.Y.

General Aniline & Film Corp., 140 W. 51 St., New York, N.Y.

Glendale Optical Co., Inc., 130 Crossways Park Dr., Woodbury, L.I., N.Y. 11797

Goodall Manufacturing Corp., 1205 E. Sanborn St., Winona, Minn.

Gotcher Engineering & Mfg. Co. P.O. Box 721, Clarksdale, Miss.

W. R. Grace & Co., Clarksville, Md. 21029

**W. R. Grace & Co.**, Whitney Seed Div., P.O. Box 250, Buffalo, N.Y. 14240

John H. Graham & Co., Inc., 105 Duane St., New York, N.Y.

Gravelly Tractors, Div. Studebaker Corp., 1 Gravelly Lane, Dunbar, W. Va. 25064

Great Lakes Chemical Corp., P.O. Box 2200, West Lafayette, Ind. 47906

Green Lawn Laboratories, Inc., 4844 Main St., Skokie, Ill.

The Gregg Co., P.O. Box 149, Riverton, N.J.

Grumman Aircraft Corp., S. Oyster Bay Rd., Bethpage, L.I., N.Y.

Gulf Oil Co., Gulf Bldg., Pittsburgh, Pa.

Gyrodyn Co. of America, Flowerfield Rd., St. James, L.I., N.Y.

## H

**Hadfield Sod Roller Co.**, 4643 Sherwood, Oxford, Mich. 48051

Halline Utility Equipment Co., 5525 S.E. 28th St., Portland, Oreg.

Clifford B. Hannay & Son, Inc., 422 Maple St., Westerlo, N.Y. 12193

Hanson Equipment Co., P.O. Box 270, Beloit, Wis. 53512

Hayes Spray Gun Co., 98 N. San Gabriel Blvd., Pasadena, Calif.

Heckendorn Mfg. Co., Inc., Cedar Point, Kans.

Henderson Mfg. Co., P.O. Box 355, Fisher, Ill.

**Hercules Incorporated**, 910 Market St., Wilmington, Del. 19801

H & G Tool Co., 22474 Sherwood, Warren, Mich.

Highway Equipment Co., 616 D. Ave., N.W., Cedar Rapids, Ia. 52405

Hiller Aircraft Corp., 1350 Willow Rd., Palo Alto, Calif.

Hoffco, Inc., 25 Washington Ave., Richmond, Ind. 47374

Homelite Div., Textron, Inc., Riverdale Ave., Port Chester, N.Y. 10573

Hooker Chemical Corp., 65 Iroquois St., Niagara Falls, N.Y. 14302

Houston Chemical Corp., 200 Madison Ave., New York, N.Y.

**Howard Rotavator Co., Inc.**, P.O. Box 100, Harvard, Ill. 60033

H. D. Hudson Mfg. Co., 589 E. Illinois St., Chicago, Ill 60611

Hub States Chemical and Equipment, 2002 No. Illinois St., Indianapolis, Ind. 46202

Humble Oil & Refining Co., Houston, Texas

Hunt-Pierce Corp., 230 Old Gate Rd., Milford, Conn.

Hydroponic Chemical Co., Inc., P.O. Box 97-C, Copley, Ohio

Hypro, Inc., 375 Fifth Ave., N.W., New Brighton, St. Paul, Minn. 55112

Ideal Crane Div., Bert Parkhurst & Co., 15051 E. Admiral Pl., Tulsa, Okla. 74116  
 Imco, Inc., P.O. Box 547, Afton, Wyo.  
**International Harvester Co.**, 401 N. Michigan Ave., Chicago, Ill. 60611  
 International Minerals & Chem. Corp., Old Orchard Rd., Skokie, Ill.  
 International Paper Co., Special Products Dept., 220 E. 42nd St., New York, N.Y.  
 Irrigation Accessories Co., P.O. Box 11214, Portland, Oreg. 97211

## J-K-L

Jacobsen Mfg. Co., 1721 Packard Ave., Racine, Wis. 53403  
 James-Way Equipment Co., P.O. Box 1349, Wichita Falls, Tex. 76307  
 Jari Corp., 2940 Pillsbury Ave., Minneapolis, Minn.  
 Johns-Manville Corp., 22 E. 40th St., New York, N.Y. 10016  
 Kalium Chemicals, Ltd., 200 Park Ave., New York, N.Y.  
 Kel Instruments Co., Inc., P.O. Box 466, New Brunswick, N.J.  
 Kemp Mfg. Co., 1027 E. 20th St., Erie, Pa.  
 Koyker Manufacturing Co., Box 898, Sioux Falls, S.D. 57101  
 Karl Kummerling, Inc., 4536 Lincoln Way, East, Massillon, O. 44646  
 Lakeshore Equipment & Supply Co., 10237 Berea Rd., Cleveland O. 44102  
 Lakes Supply Co., Inc., P.O. Box 101, Dundee, Ill. 60118  
 LaMotte Chemical Products Co., Chestertown, Md.  
 Larson Machine, Inc., 1017 N. Santa Fe St., Princeville, Ill. 61559  
 O. E. Linck Div., Walco-Link Corp., 1234 State Highway 46, Clifton, N.J.  
 Lindig Manufacturing, Inc., 1875 W. County Rd. "C", St. Paul, Minn. 55113  
 Loamite Corp., One Bush St., San Francisco, Calif.  
 Lobel Chemical Corp., 100 Church St., New York, N.Y. 10007  
**Locke Manufacturing Companies, Inc.**, P.O. Box 9175, South Charleston, W. Va. 25309

## M

Mallinckrodt Chemical Works, 3600 N. Second St., St. Louis, Mo. 63160  
 Marlow Pumps Div., ITT Bell & Gossett, Inc., P.O. Box 200, Midland Park, N. J. 07432  
 Martin Tire & Supply Inc., 154 N. Emporia, Wichita, Kans. 67202  
 Martindale Electric Co., 1375 Hird Ave., Cleveland, O. 44107  
 Massey-Ferguson Inc., 1901 Bell Ave., Des Moines, Iowa  
 McCabe-Powers Body Co., 8900 Frost Ave., St. Louis, Mo. 63134  
 McCulloch Corp., 6101 W. Century Blvd., Los Angeles, Calif.  
 McLaughlin Gormley King Co., 1715 5th St., S.E., Minneapolis, Minn.  
 Meadow Bros. Nursery Supplies, P.O. Box 277B, Altadena, Calif. 91001  
 The Ben Meadows Co., 533 Amsterdam Ave., Atlanta, Ga.  
 Melnor Industries, Inc., 1 Carol Place, Moonachie, N.J.  
 Melroe Mfg. Co., Gwinner, N. Dak.

**See Advertisements  
 in this issue  
 of Suppliers  
 Listed in Boldface**

Merck Chemical Div., Merck & Co., Rahway, N.J. 07065  
**Merion Sod Farms, Inc.**, 44533 Sterritt, Utica, Mich. 48047  
 Metasol Products, Merck & Co., 200 Wagaraw Rd., Hawthorne, N.J.  
 Michigan Chemical Corp., 500 N. Bankson St., St. Louis, Mo.  
 Miller Chemical & Fertilizer Corp., 3006 W. Cold Spring Lane, Baltimore, Md. 21215  
 Miller-Robinson Co., 7007 Avalon Blvd., Los Angeles, Calif.  
 Milwaukee Sewerage Commission, P.O. Box 2079, Milwaukee, Wis. 53201  
 Mine Safety Appliances Co., 201 N. Braddock Ave., Pittsburgh, Pa. 15208  
 Minnesota Wanner Co., 5145 Eden Ave. S., Minneapolis Minn. 55436  
 Mitts & Merrill, Inc., 109 McCoskry St., Saginaw, Mich., 48601  
 Mobile Aerial Towers, Inc., 2314 Bowser Ave., Ft. Wayne., Ind. 46803  
 Mobil Chemical Co., Industrial Chemicals Div., 401 East Main St., Richmond, Va. 23208  
 Mock Seed Co., 13th & Smallman, Pittsburgh, Pa.  
 Monarch Mfg. Works, Inc., 2501 E. Ontario St., Philadelphia, Pa. 19134  
 Montrose Chemical Co., 104-12 Lister Ave., Newark, N.J.  
 Morton Chemical Co., 110 N. Wacker Dr., Chicago, Ill. 60606  
 Mott Corp., 500 Shawmut Ave., LaGrange, Ill. 60525  
 MTD Products, Inc., 5389 W. 130th St., Cleveland, O. 44111  
**F. E. Myers & Bro. Co.**, 400 Orange St., Ashland, Ohio 44805

## N

National Chemsearch Corp., P.O. Box 217, Irving, Tex. 75060  
 Nalco Chemical Co., 180 N. Michigan Ave., Chicago, Ill.  
 Naugatuck Chemical, Div. U.S. Rubber, Naugatuck, Conn.  
 New World Products Co., Inc., 11126 Rush St., El Monte, Calif. 91733  
 Niagara Chemical Div., FMC Corp., 100 Niagara St., Middleport, N.Y. 14105  
 Northrup, King & Co., 1500 Jackson St., N.E., Minneapolis, Minn. 55413  
**John Nunes Mechanical Harvesting Co.**, 2518 Loquot Ave., Patterson, Calif. 95363  
 Nursery Specialty Products Co., 410 Greenwich Ave., Greenwich, Conn. 06830

## O

Oakes Mfg. Co., FMC Corp., 516 Dearborn St., Tipton, Ind.  
 Oberdorfer Pump Div., Thompson Rd., Syracuse, N.Y.

Oil-Dri Corp. of America, 520 N. Michigan Ave., Chicago, Ill.  
 Olin Mathieson Chemical Corp., Chemicals Div., Baltimore, Md.  
 Oliver Corp., 400 W. Madison St., Chicago, Ill.  
 Omark Industries, Inc., 9701 S.E. McLaughlin Blvd., Portland, Oreg.

## P-Q

Panama Pump Co., Meadow Lane, Hattiesburg, Miss.  
 Parker Sweeper Co., 91 Bechtle Ave., Springfield, Ohio  
 Parco Products Co., Pottstown Ave. & Dotts St., Pottsville, Pa. 18073  
**S. B. Penick & Co.**, 100 Church St., New York, N.Y. 10007  
 Pennington Mfg. Co., 136 Commercial Rd., Addison, Ill.  
 Pennsalt Chemicals Corp., 2901 Taylor Way, Tacoma, Wash. 98401  
**Robert B. Peters Co., Inc.**, 2833 Pennsylvania St., Allentown, Pa. 18104  
 Phelps Dodge Refining Corp., 300 Park Ave., New York, N.Y.  
 Phillips Petroleum Co., Bartlesville, Okla.  
 Pioneer Saws, Ltd., 910 Monaghan Rd., Peterborough, Ontario  
 Piper Aircraft Corp., Bald Eagle St., Lock Haven, Pa.  
 Pitman Mfg. Co., P.O. Box 605, Grandview, Mo. 64030  
 Pittsburgh Plate Glass Co., Chemical Div., One Gateway Center, Pittsburgh, Pa. 15222  
 Plant Marvel Laboratories, 624 W. 119 St., Chicago, Ill.  
 H. K. Porter, Inc., 74 Foley St., Somerville, Mass. 02143  
**B. G. Pratt Co.**, 204 21st St., Paterson, N.J. 07509  
 Premier Peat Moss Corp., 25 W. 45 St., New York, N.Y. 10036  
 Prentiss Drug & Chemical Co., Inc., 101 W. 31 St., New York, N.Y.  
 Pulmosan Safety Equipment Corp., 30-48 Linden Pl., Flushing, N.Y. 11354  
 Quick Manufacturing, Inc., 256 Linden Ave., Springfield, Ohio

## R

Rain Bird Sprinkler, 7045 N. Grand, Glendora, Calif. 91740  
 Rain-O-Mat Sprinklers, 11701 E. Washington Blvd., Whittier, Calif. 90602  
 Ra-Pid-Grow Corp., 88 Ossian, Dansville, N.Y.  
 Rear's Mfg. Co., P.O. Box 3347, Eugene, Oreg.  
 Reichhold Chemicals, Inc., 525 N. Broadway, White Plains, N.Y.  
 Reinco Inc., P.O. Box 584, Plainfield, N.J. 07061  
 B. G. Reilly Co., P.O. Box 231, N. Scituate, R.I.  
 Remington Arms Co., Inc., 25000 S. Western Ave., Park Forest, Ill 60466  
 Rental Equipment Mfg. Co., 2778 S. Tejon, Englewood, Colo. 80110  
 Republic Aviation Corp., Helicopter Div., Farmingdale, L.I., N.Y.  
 Residex Corp., 225 Terminal Ave., Clark, N.J. 07066  
 Reynolds Metals Co., 6601 W. Broad St., Richmond, Va. 23218  
 Robeco Chemicals, Inc., 51 Madison Ave., New York, N.Y.  
 Roberts Chemicals, Inc., P.O. Box 546, Nitro, W. Va.  
 Rockland Chemical Co., P.O. Box 204, West Caldwell, N.J. 07006