

include a "Beaver Tail" boom of low profile for greater versatility and maneuverability, a new clutch design that permits the operator to stop rotation of the cutter head without stopping the engine, and a new hydraulic system that functions at all times when the engine is running, thus allowing movement of other machine components even when the cutting head is declutched.

Designed to be pulled by a pickup truck, the StumpKing offers a hydraulically controlled double cutter head, located at the rear of the unit, said to reduce the toughest stump to mulch in minutes. The new models also feature improved stability, greater visibility, and improved operator safety and convenience.

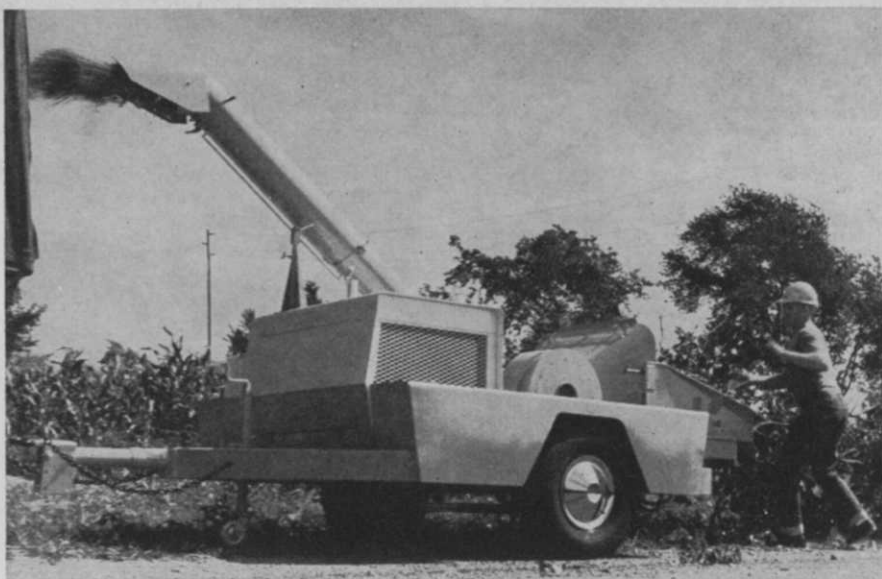
Brooks Products Div., The Tool Steel Gear & Pinion Co., Cincinnati, Ohio 45216, will send full details to those who write it and ask for bulletin 464-B.

### Dow, Chemagro Reveal Joint Marketing Plans

Joint marketing of Dow Chemical Co.'s Dowpon and Tordon herbicides and Chemagro Corp.'s Di-Syston and Bay 25141 insecticides has been revealed by the two large producers of agricultural chemicals. Explaining that the new arrangement will enable both companies to offer a more versatile line of products, the announcement was made jointly by Dow, Midland, Mich., herbicide producer, and Chemagro, Kansas City, Mo., maker of insecticides and fungicides.

Chemagro will market Dow's Tordon, used principally for control of hard-to-kill perennial weeds, and Dowpon, killer of such problem grasses as johnsongrass. Dow, in turn, will distribute Di-Syston, a systemic insecticide, and Bay 25141, nematocide registered for use on ornamentals and commercial turf.

In addition to diversification of their market capabilities, the two companies termed the plan a step toward combating rapidly mounting costs of chemical research and development.



The "Wood/Chuck" is Pitman Manufacturing Co.'s new chipper. Telescoping, rotating discharge chute chucks out wood and brush at 1/15th of its size on entering the 67 in. long steel feeding apron. Unit is mounted on rugged frame with 5,000 lb. capacity axle.

### "Wood/Chuck" Designed To Ease Brush Clearance

The "Wood/Chuck," Pitman Manufacturing Co.'s new precision chipper, is said to be designed to handle brush clearance jobs faster, safer, and cheaper than conventional methods. Capable of chipping wood up to 8 in. in diameter, the new chipper quickly reduces brush to 1/15th of its original size, the Grandview, Mo., company claims.

Available skid- or trailer-mounted, "Wood/Chuck" is constructed around a balanced, forged solid steel rotor with corrugated knives of hi-alloy cutting steel which cut into wood at a shallow angle, providing smooth slicing, according to Pitman. Other features include an adjustable bed knife with four cutting edges, a heavy-duty 3 in. diameter rotor shaft, rugged unitized frame, and telescoping discharge chute that rotates through 360° and can be lowered for road travel.

Steel feeding apron is 67 in. from its outer end to the rotor knives for safety. In addition, a protective feed shroud and safety control panel have been incorporated for safe chipping. A hydraulic, vacuum-actuated safety brake is available as an option. Large, built-in tool boxes and a fold-away support wheel with 5,000 lb. capacity are standard

features on the chipper.

Designed for one-man operation, the "Wood/Chuck" is powered by a 240, 300, or 330 cu. in. Ford industrial engine. Pitman Manufacturing Co., Grandview, Mo. 64030, will send further data on this newest addition to its equipment line to readers requesting it.

### Landscapers Move to D.C.

The Associated Landscape Contractors of America, professional association of landscapers, has recently announced the move of its national headquarters to Washington, D.C. from Berkeley, Calif. ALCA president, John Bell of Arlington, Mass., said the move would permit the association to better serve the country's beautification program, provide greater service to members, and permit the group to work more closely with other associations in the horticulture field.

ALCA has also appointed a new executive director, Harry J. Lambeth of Washington, D.C. Plans are being made to expand organization activities, and the first issue of a new newsletter, "ALCA Action Letter," has already been mailed. Associated Landscape Contractors of America, Inc., 632 Shoreham Building, 806 15th Street, N.W., Washington, D.C. 20005, will provide more information about the group and its newsletter.

## Classifieds

When answering ads where box number only is given, please address as follows: Box number, c/o Weeds Trees and Turf, 1900 Euclid Avenue, Cleveland, Ohio 44115.

Rates: "Position Wanted" 5c per word, minimum \$2.00. All other classifications, 10c per word, minimum \$2.00. All classified ads must be received by Publisher the 10th of the month preceding publication date and be accompanied by cash or money order covering full payment. **Boldface rule box:** \$15.00 per column inch, two inch minimum.

### HELP WANTED

**MANAGER:** New sod operation being combined with 800-acre farm. Experience required. Age 30 to 45. Top pay, extras, large modern home. Unlimited future. Huber Ranch, Schneider, Indiana.

**WORKING FOREMAN/assistant supervisor** for tree service company doing private work in southern Ohio. Must be capable of working with and supervising crews. Possibility of becoming manager later. Please send details of experience, background and references. Write Box 21, Weeds Trees and Turf magazine.

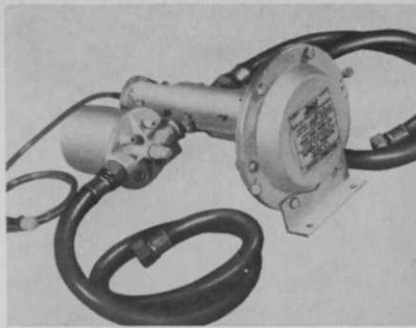
### FOR SALE

**ONE 60-GPM HARDIE sprayer, 500-gallon tank, Wisconsin air-cooled motor; one 40-gpm Iron Age sprayer, 500-gallon tank, LeRoi Industrial motor.** (These complete sprayer units go on and off flat-bodied trucks.) Also one 60-gpm Hardie pump; lawn measuring wheels; weed booms for lawn spraying; one 15-gpm complete lawn sprayer, 275 tank on wheels. Write Box 20, Weeds Trees and Turf magazine.

### Hale Produces Proportioner

A chemical proportioner, capable of measuring exactly 1 ounce of chemical to each gallon of water, is new from Hale Fire Pump Co., Conshohocken, Pa. Proportioning is reportedly constant regardless of water flow volume or water line pressure.

Said to be useful to spraymen,



All-bronze Hale Chemical Proportioner is said to provide exact, unvarying measures.

turfmen, and nurserymen, the all-bronze proportioner is capable of delivering 500 gals. per hour and is constructed without springs, seals, packing, or external moving parts, according to the firm. Self-priming and completely automatic, the unit works on water power alone and includes a water filter and high pressure hoses with cast bronze connections, Hale says.

Literature and prices can be obtained from the distributor, Alfred A. Rudolph, 26 Evelyn Ave., Vineland, N. J.

### Bulletin Describes Tree, Shrub Pests

"Insect and Mite Pests of Trees and Shrubs" is a new bulletin by Dr. Ralph B. Neiswander, Professor Emeritus of Zoology and Entomology, Ohio Agricultural Research and Development Center.

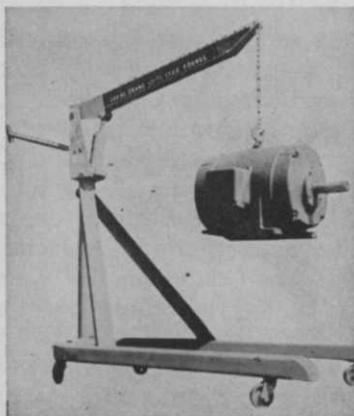
Pests are described in detail and their habits carefully delineated in the 54-page booklet, which offers 85 excellent black-

## Advertisers

### INDEX TO ADVERTISEMENTS

American Oil Co. . . . .	2nd Cover
The Ansul Co. . . . .	Sept.
John Bean Div., FMC . . . . .	3rd Cover
Brooks Products Division . . . .	4
Burton Supply Co., Inc. . . . .	Sept.
Eagle-Picher Co. . . . .	Sept.
Fitchburg Engineering Corp. . . . .	23
Geigy Agricultural Chemicals . . . . .	27
Hercules Incorporated . . . . .	11
Hooker Chemical Corp. . . . .	21
Ideal Crane, Division of Bert Parkhurst & Co. . . . .	32
International Harvester . . . . .	18-19
McCulloch Corp. . . . .	Sept.
Mitts & Merrill, Inc. . . . .	15
Oregon Chewings and Red Fescue Commission . . . . .	Sept.
Robert B. Peters Co., Inc. . . . .	Sept.
Phelps Dodge Refining Corp. . . . .	3
Ronson Helicopters, Inc. . . . .	Sept.
Root-Lowell Corp. . . . .	6
Ryan Equipment Co. . . . .	6
Shell Chemical Co. . . . .	Sept.
Solo Industries, Inc. . . . .	33
Thompson-Hayward Chemical Co. . . . .	4th Cover

and-white photographs of pests and damaged plants. Insects and mites described include sucking pests of foliage and twigs, gall makers, leaf miners, defoliators, wood-boring insects, and root feeders. Issued as a pest identification aid for commercial arborists and nurserymen, Research Bulletin 983 is available for \$1 from the Ohio Agricultural Research and Development Center, Wooster, Ohio. Ohio residents should add 3¢ sales tax.



### ONE-MAN HYDRAULIC CRANE

Comes complete with truck mount and 6-ft. chain. Can be mounted on any type truck. Accessories include Nylon Adjustable Tree Sling, \$27.50; Barrel Chain, \$4.95; Stiff Leg for use under truck bumper, \$9.95. Floor Dolly shown only \$99.50. Crane is interchangeable from dolly to truck mount.

1500-Lb. Capacity **\$119.50**      2500-Lb. Capacity **\$169.50**

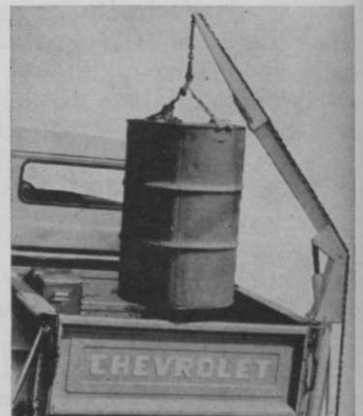
Sold on Guaranteed Performance basis or money back.

If check accompanies order we pay freight to your door. Call collect to place your order.

### IDEAL CRANE

DIVISION BERT PARKHURST & CO.

15051 East Admiral Pl.      Tulsa 18, Oklahoma  
Telephone: 918 + GE 7-3313



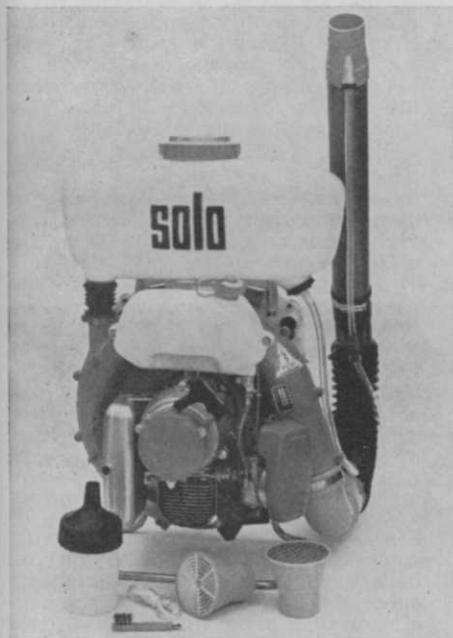


**SOLO JUNIOR 410**  
3 h.p. Only 15 lbs.

it's time to  
**solo**  
for  
**Unmatched  
Power,  
Performance  
and  
Dependability**

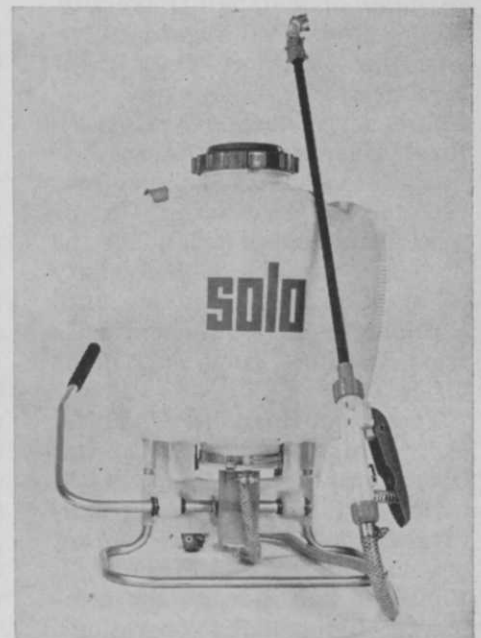


**SOLO 630 PRUNING SAW**  
Other models available from "Lightweight"  
to 9½ h.p.



**SOLO 423 MISTBLOWER**  
5 h.p. Only 26 lbs.

*Made by  
the  
World's  
First and  
Largest  
Backpack  
Sprayer  
Manufacturer*



**SOLO KNAPSACK HAND SPRAYER 425**  
Capacity, 4 gallons. "Lightweight" weighs 8 lbs.  
Delivers up to 16 feet in height.

**Dealer Inquiries Invited!**

We can serve you coast to coast.

**solo Industries, Inc.**

P. O. Box 128, Dept. 76

37-41 57th St. Woodside, New York 11377

**SOLO Industries, Inc.**  
P. O. Box 128, Dept. 76  
Woodside, N.Y. 11377

**MAIL  
TODAY**

Please send me complete information on SOLO's new Power  
Unit 410 — 423 — 425 — 630 (Circle one of interest)

Name .....

Firm .....

Address .....

City..... State..... Zip Code.....

I'm interested in a dealership.

When Writing to Advertisers Please Mention WEEDS TREES AND TURF



## Suppliers Personnel Changes

Eli Lilly and Co., Indianapolis, Ind., has named Dr. Edwin F. Alder director of agricultural research. The former senior plant physiologist and director of plant science research holds degrees from the University of Chicago and the University of Oklahoma, where he received his doctorate in 1956. Dr. Alder, who also did research work at the University of Bergen in Norway, is a member of numerous professional societies, including the Weed Society of America, and the American Society of Plant Physiologists.

Smith-Douglass division of Borden Chemical Co., Norfolk, Va., has appointed Ronald W. Moore sales supervisor for the division's Nutro Turf & Garden plant food line. Moore, who is a graduate of Marshall University, Huntington, W. Va., will supervise the Baltimore area sales territory.

Stauffer Chemical's Agricultural Chemical Division has named Harold L. Straube, former director of marketing, to be marketing vice president for the division. Straube, a University of Massachusetts graduate, will continue to direct division sales from Stauffer's New York home office.

Thompson-Hayward Chemical Co., Kansas City, Kans., has named two branch managers and added five men to its Agricultural-Chemical Division market development staff. Harold J. Vandiver will manage the company's Indianapolis operations, and John Baker will manage the Omaha branch. Vandiver is a

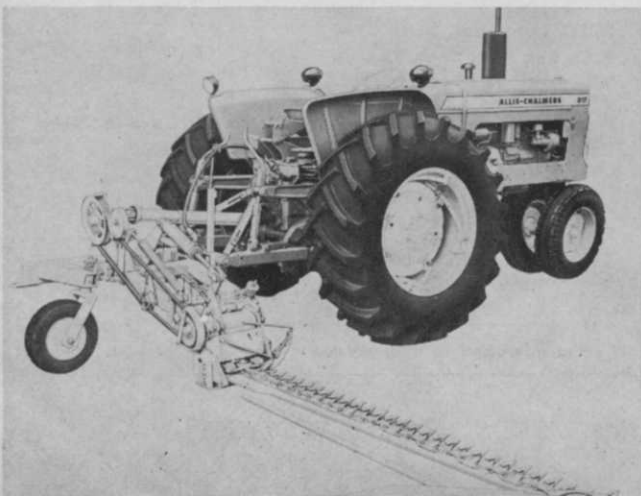
20-year veteran of Thompson-Hayward, while Baker has been with the company 25 years. Recently named market-development staffers, who will be responsible for developing new pesticide compounds, are: James Taylor for the southeastern region, headquartered in Gainesville, Fla.; Larry Livengood, who will also go to the Gainesville office; Frank E. Phipps, northwestern representative, to work out of Tigard, Ore.; John Plant for the southwestern area; and Charles Reed, representative in the north central region.

## Allis-Chalmers Adds Two to Mower Line

Addition of two new models to its 80 Series line of no-pitman mowers is being announced by Allis-Chalmers. New models are the 82-R and 82-T, the latter replacing the company's Model 80-T.

Mowers are said by the maker to attach quickly and easily to the tractor, and to feature heavy, welded box-type frames for rigidity and support of the entire unit to keep operating parts in true alignment. Both models have twin-wheel drive, which gives quiet, almost vibrationless mowing, according to Allis-Chalmers. The trail-type 82-T mower has large tires for smoother operation and greater stability. Optional equipment includes a choice of three sickle guards for regular mowing and for use in heavy grasses or thick undergrowth.

For more details on 82-R and 82-T ask Allis-Chalmers Mfg. Co., Box 512, Milwaukee, Wis.



New addition to the Allis-Chalmers 80 series line is this Model 82-R no-pitman, twin-wheel mower. Cutter bar and sickle knife swing back on contact with rocks or debris to prevent damage.

## Trimmings

**Pesticide Nerves.** As we were chiding Connecticut, editorially, for discontinuing its spraying of the European chafer, we received a release pertinent to that state's apparently virulent case of "pesticide nerves." The gist of it is that the State Board of Pesticide Control is preparing to hold a public hearing on a proposal to ban the use of DDT by custom ground applicators and state agencies. We find it surprising, to say the least, that a state should seriously consider outlawing one of the most time-tested and useful of pesticides. A reasonable degree of caution towards pesticides is unquestionably necessary. But, caution out-of-hand is apt to become a do-nothing attitude towards destructive pests, and neither the nervous minority prompting the Connecticut scare nor anyone else is prepared to say precisely what will happen if man is over-cautioned into forfeiting the war against pests. We feel that the recent Ribicoff report on pesticide usage and safety hedges the question, and we doubt that the report will ease anti pesticide tensions. It's more likely to increase the tension by its air of wary approval. Perhaps it is only a coincidence that chairman Ribicoff is from Connecticut, but it's obvious that certain of his constituents, at least, have drawn the blackest possible conclusions regarding remote pesticide dangers.

\* \* \*

**Green Thumbs to Take Flight.** Nurserymen, landscapers, and horticulture enthusiasts in general are being invited to sign up for a 21-day tour of Europe's arboretums, gardens, parks, and other horticultural delights. Set for May 1967, the guided tour will visit Scotland, England, Holland, France, Italy, and Switzerland. Interested parties should contact tour escort Dr. Harold Davidson, Associate Professor of Horticulture at Michigan State University, East Lansing, Mich.

\* \* \*

**Portrait of a Pioneer.** The recently completed 42nd ISTC Convention held a surprise for veteran utility arborist Fred Ashbaugh. At the conclusion of a panel discussion on tree growth retardants, which Ashbaugh moderated, the floor was "stolen" by representatives of The Dow Chemical Co., who then presented the Pennsylvania arborist with an oil portrait in recognition of his outstanding contribution to the field of weed control.

\* \* \*

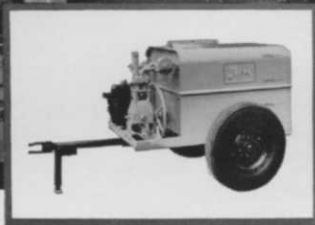
**Rose Grows on Bananas.** Or, a note for the vegetation expert who forgets to fertilize his wife's roses: the United Fruit Co. is promoting mashed banana peels for rose bush food.

\* \* \*

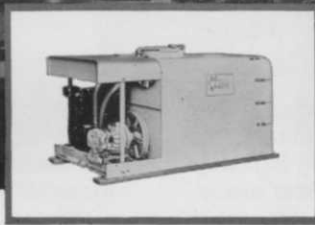
**Seedman Dies.** Recently, WTT was informed of the death of Dwight Guthrie Scott, pioneer seedman and former president of O. M. Scott & Sons. D. G. Scott was one of the founders of the famous seed firm, which grew from a 19th century Marysville, Ohio, hardware business.

*leadership*  *engineering* pushes performance up - prices down

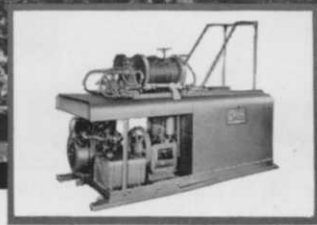
**IT PAYS  
TO LEARN  
THE  
3-R's OF  
HIGH-PRESSURE  
SPRAYING**



**ROYALETTE** the leader for all-purpose versatility. 5 or 10 GPM @ 400 psi. (500 psi with the Model R-10) 14 separate models to meet your needs exactly.



**ROYALIER** the middle-sized "R" delivering 20 GPM @ 400 psi with new velva-flo Royalier 4-piston pump. Pick from 15 models.



**ROYAL** the "big daddy" in 25, 35 and 60 GPM capacities @ pressures to 800 psi. Proven by years and years of service. 12 models.

It pays to learn the 3-R's, because the knowledge can help you save time and money, do more profit-making jobs, and help you get your jobs done better and sooner. What jobs? Ah, there's the key! Jobs like shade tree spraying, brush and weed control, dust abatement. Close to the soil tasks like liquid fertilizing, lawn insect and turf disease control, root feeding. Clean-up jobs like sanitation spraying, mosquito and insect control. Fringe benefits like equipment cleaning, water-soluble paint spraying, many more. With John Bean High-Pressure Sprayers, you have the power to do the jobs thoroughly and quick. You have Bean-Bond corrosion-resistant tanks, ceramic pump cylinders, and many other Leadership-Engineered features to insure durability and dependability. Now, go back and add up the models. Forty-one (and we didn't even count several engine options)! That makes it as simple as ABC to look through the 3-R's and pick the one that's exactly right for you. May we help you pick?

LEARN THE 3-R's. First lesson is writing for catalogs on the models that interest you most. Just clip this coupon to your letterhead and mail.

- ROYALETTE all-purpose sprayers
- ROYALIER high-pressure sprayers
- ROYAL heavy-duty, high-pressure sprayers



**JOHN BEAN DIVISION**

Lansing, Mich. - Orlando, Fla. - San Jose, Calif.