



SNOW MOLD

DOLLAR SPOT

BROWN PATCH



FAIRY RING

**UGLY SPOTS CAUSED BY FUNGAL DISEASE**

**EASY TO AVOID  
WITH THIS SPRAY**

Fungal diseases such as you see here can ruin a beautiful lawn fast. First, ugly yellow, brown or grayish spots appear. Left unchecked, these diseases destroy vital root systems and spread, killing off large areas of lawn. To prevent such costly damage, simply apply Panogen Turf Fungicide.

This hard-working chemical makes it easy—and inexpensive—only .14 to 28c per 1000 ft. to spray away the danger of fungal disease. Can be used to keep healthy lawns disease-free, or to control an outbreak of fungal disease during early stages. Highly selective; attacks only fungal diseases without injury to turf. A liquid concentrate. Simply mix with water and apply with sprayer. Order from your chemical supplier.



**PANOGEN<sup>®</sup>**  
TURF FUNGICIDE



*Another Peace-of-mind product from ...*

**MORTON CHEMICAL COMPANY**

A DIVISION OF MORTON SALT COMPANY

110 NORTH WACKER DRIVE, CHICAGO 6, ILLINOIS

# —Here's solo in Action for Vegetation Maintenance!—

## for WEED CONTROL

below: the Solo Motor Scythe  
3½ Foot Cutterbar



right: New Solo Junior  
2½ H.P.—Only 15 lbs.



## BRUSH CONTROL

left: the Solo Mistblower  
5 H.P.—Only 27 lbs.



above: Solo Chain Saw 70-A  
5 H.P., 7 H.P. & 9½ H.P.



## TURF MANAGEMENT

## TREE CARE

## Four Good Reasons to Join the Swing to solo!

■ Now from SOLO, manufacturers of the world's largest selling mistblowers, comes a complete line of maintenance machines for all phases of the vegetation management industry.

■ More and more contract applicators, arborists, and rights-of-way supervisors are finding SOLO equipment the versatile answer to weed and brush control problems. The SOLO Motor Scythe, for example, has been proven in use throughout the world; it's perfect for brush control work.

■ Arborists and foresters find the SOLO Chain Saw 70A ideal for portable convenience . . . for on-job touchups, for general and H.D. use. There's a SOLO machine for you, too! For details on these and other SOLO equipment, use the handy coupon at the right.

- For Contract Applicators
- Arborists, Foresters
- Railway, Highway, Utility Rights-of-way Supervisors
- Nurserymen, Golf Course Superintendents

### ■ Dealer Inquiries Invited!

SOLO Industries, Inc.  
P. O. Box 128, Dept. 76  
Woodside, N.Y.

**MAIL  
TODAY**

Please rush me details on SOLO's proven power machines for  
 brush control  turf maintenance  tree care.

Name .....

Firm..... Position.....

Address .....

City..... State..... Zip Code.....

I'm interested in a dealership.

## Solo Industries, Inc.

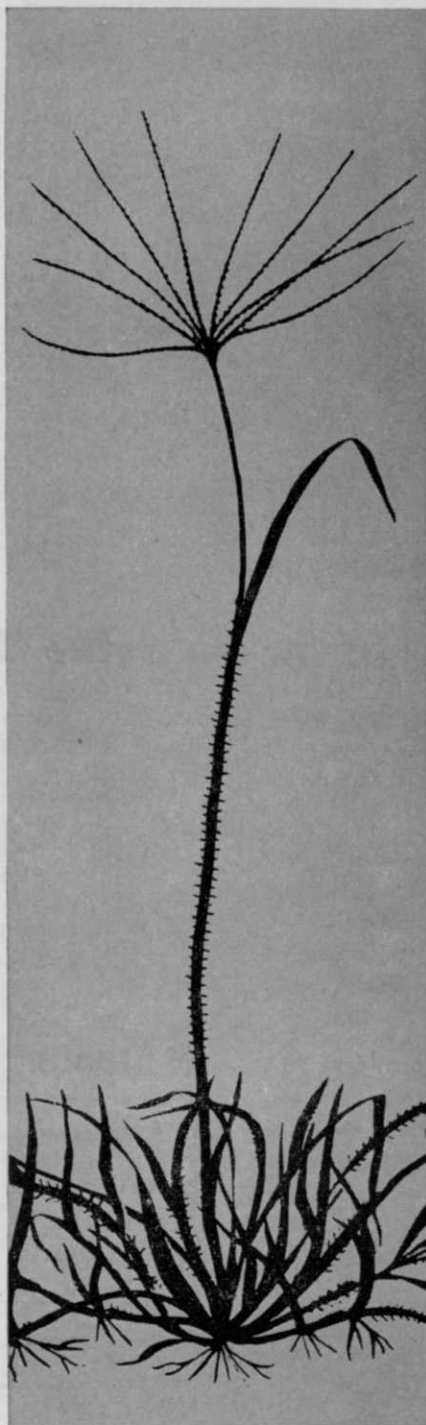
P. O. Box 128, Dept. 76

37-41 57th St.

Woodside, New York

# What's so NEW about AZAK\*?

**Selective Pre-Emergence Herbicide for Crabgrass Control**



Azak\*, Hercules' new carbamate herbicide for pre-emergence crabgrass control, puts superior crabgrass control within the reach of every budget. Dollar for dollar there is no pre-emerge control on the market that has the many advantages Azak offers.

Be sure to include Azak in your 1965 formulations. For technical data and product availability, contact Hercules Powder Company, Wilmington, Delaware 19899, or one of our turf specialists in the district offices listed below.

- One application gives full season control
- Safe for established turf
- Nonleaching
- Compatible with fertilizers and other pesticides
- Practically odorless
- Low in toxicity to warm-blooded animals
- Now available at a new low cost

\*Hercules Trademark

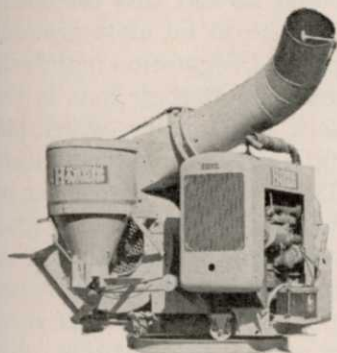


SZ64-3

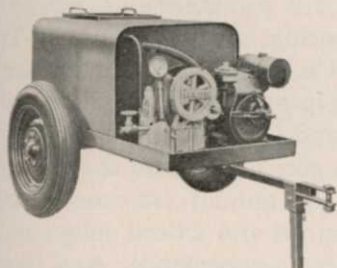
BOSTON, MASS.; CHICAGO, ILL.; DALLAS, TEXAS; GREENVILLE, MISS.; LOUISIANA, MO.; MONTGOMERY, ALA.; RALEIGH, N.C.; SAN FRANCISCO, CALIF.

# HARDIE

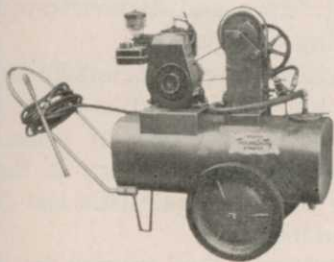
**HAS THE RIGHT  
SPRAYER FOR YOU**



**Aeromist Sprayer-Duster**



**Model 99  
50-100 gal Skid-Trailer**



**15-30 gal, Town & Country**

Hardie has just the sprayer for your particular job, whether it be for mosquito control; combatting Dutch Elm disease; nursery work; contract lawn, tree & shrubbery service . . . Whatever your need may be . . . write to Hardie today, or call your local Hardie Dealer for more information or an on-the-spot demonstration.

# HARDIE SPRAYERS

4200 Wissahickon Ave.—Phila. 40, Pa.  
A DIVISION OF  
UNIVERSAL AMERICAN  
CORPORATION

# WEEDS and TURF

August 1964

Volume 3, No. 8

**Features:**

Arborists' Big Job:  
Cut Out the "Little" Accidents..... 8

Noninfectious Tree Disease, Part I  
Effect of Cold Injury and Freezing  
By Dr. Richard Campana.....10

A Review of Shade Tree Pruning Practices  
For Streetside Line Clearance.....12

Turfgrass Portraits II: Fine Fescues  
By Dr. Robert W. Schery.....16

Slowing Tree and Shrub Growth with Retardant MH-30T  
By Dr. John W. Zukel.....20

Expanded Hyacinth Controls, New Spray Systems  
On Society Agenda at Tallahassee, June 28-30.....26

Ohio Chapter ISTC Proposes More  
Ag Station Small Tree Evaluation.....29

**Departments:**

Editorial: A Salute to the ISTC..... 6

Know Your Species: Puncture Vine.....24

Meeting Dates .....28

Suppliers Personnel Changes.....31

Classifieds .....32

Advertisers Index .....32

Trimmings .....34

●

**JAMES A. NELSON**  
Publisher

**CHARLES D. WEBB**  
Editor

**DAVID E. SCHNEIDER**  
Staff Biologist

**R. J. HOFFER**  
Circulation Manager

●

**Advertising Representatives**  
**National Headquarters**  
1900 Euclid Avenue  
Cleveland, Ohio 44115  
Phone: Area Code: 216+771-4169

**New York City**  
Billingslea & Ficke  
420 Lexington Avenue  
Phone: Area Code: 212+  
LExington 2-3667

**Los Angeles**  
The Maurice A. Kimball Co., Inc.  
2550 Beverly Boulevard  
Phone: 213+DUnkirk 8-6178

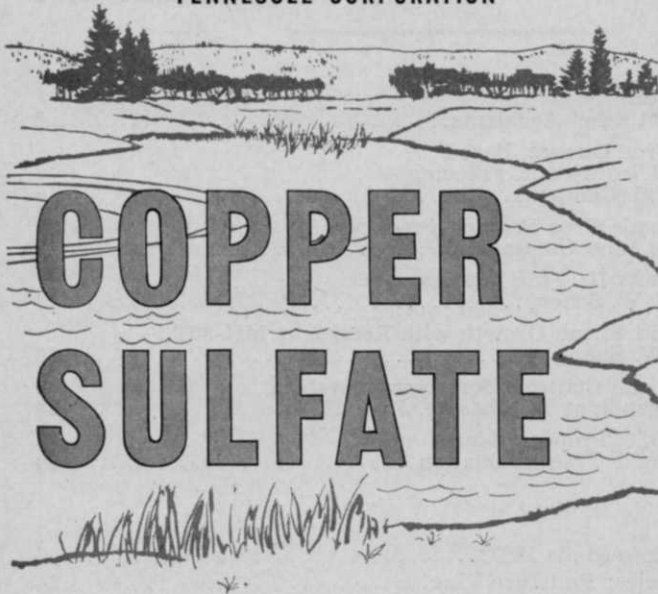
**San Francisco**  
The Maurice A. Kimball Co., Inc.  
580 Market Street  
Phone: 415+EXbrook 2-3365

WEEDS AND TURF is published monthly by Trade Magazines, Inc. Executive, editorial, and advertising offices: 1900 Euclid Ave., Cleveland, Ohio 44115. Publication office: Corner of East North St. and N. Cadwallader St., Fostoria, Ohio. Send all correspondence to WEEDS AND TURF, 1900 Euclid Ave., Cleveland, Ohio 44115.

**Single Copy Price:** 50 cents for current issue; all back issues 75 cents each. Foreign \$1.00.  
**Subscription Rates:** U.S. and possessions, 1 year \$3.00; 2 years \$5.00. All other foreign subscriptions, 1 year \$4.00; 2 years \$7.00. **Change of Address:** Three weeks advance notice is necessary for change of address. Both old and new address must be given. Post Office will not forward copies. Third Class postage is paid at Fostoria, Ohio.

Contents of this Issue © Trade Magazines, Inc., 1964

**TC**  
TENNESSEE CORPORATION

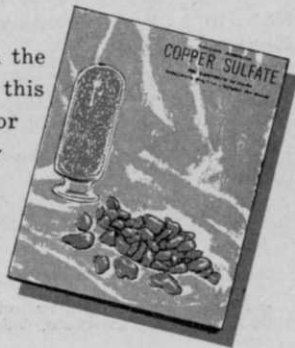


**For control of algae,  
microorganisms and fungi.**

**READILY AVAILABLE IN ALL CRYSTAL SIZES**

- **Large Crystals**
- **Medium Crystals**
- **Granular Crystals**
- **Snow Crystals**
- **Powdered** —instant dissolving

For your free booklet on the use of Copper Sulfate in this application, a quotation or the name of your nearby distributor, contact



Call us at JA. 3-5024 or write.

**TENNESSEE CORPORATION**

521 Grant Building, Atlanta 3, Georgia

## **A salute to the ISTC!**

This month members of the International Shade Tree Conference are meeting at the Shamrock Hilton Hotel in Houston, Texas, for their 40th Annual Convention, August 16-21.

In an age when the relentless tide of urbanization sweeps farther and farther into the countryside, the public has cause to be most grateful to this dedicated group. And vegetation maintenance professionals also should doff their hats in salute to this group's fortieth anniversary, which marks four decades of notable progress in tree science.

Purposes of the ISTC are "to improve the practice of tree preservation; to stimulate a greater interest in the planting and preservation of ornamental trees; and to initiate and foster scientific investigation into the various problems encountered in the practice of tree preservation." These quotes are directly from the group's constitution.

Certainly these are commendable reasons for forming an organization. Under Secretary-Treasurer Dr. Lewis C. Chadwick, the Conference has grown in membership and in importance, and has served the nation, and its trees, hard and well.

The constitution goes on to state that the group will also promote an annual convention where ideas may be exchanged and where delegates may profit from each other's experience. And the constitution states further that the annual convention will provide manufacturers of materials or equipment a place to introduce and demonstrate their products to practicing arborists.

So the ISTC, while striving primarily to disseminate scientific knowledge and to foster a respect for and an active interest in trees, also recognizes the importance of industry in the advancing technology of tree care. This last factor is in itself commendable.

The staff of *Weeds and Turf* salutes the International Shade Tree Conference, its current president Dr. Spencer H. Davis, its respected secretary Dr. L. C. Chadwick, and the officers and members who have worked together to bring the organization to its present level of excellence and dedication.

We hope this 40th convention will herald a new era of success and achievement, and we pledge our pages to the utmost cooperation with the aims of this fine organization.

WEEDS AND TURF is the national monthly magazine of urban/industrial vegetation maintenance, including turf management, weed and brush control, and tree care. Readers include "contract applicators," arborists, nurserymen, and supervisory personnel with highway departments, railways, utilities, golf courses, and similar areas where vegetation must be enhanced or controlled. While the editors welcome contributions by qualified freelance writers, unsolicited manuscripts, unaccompanied by stamped, self-addressed envelopes, cannot be returned.



## Spray this fall to control next year's weeds

Fall is the ideal time to spray with Simazine 80W herbicide for control of weeds through next summer.

You and your crews will be busy with 101 other jobs in the spring. So it's good management to get weed control taken care of ahead of time.

### Effective weed control

It's good weed control, too. Wherever they're a problem—industrial, commercial, institutional or roadside sites—Simazine gives you the dependable, one-spray solution.

During the winter, Simazine stays in the weed root zone, ready to kill most annual and many perennial broadleaf and grassy weeds as they emerge.


### Safe to use, too

And, because Simazine kills weeds through the roots before they have made any appreciable growth, you don't have any unsightly dead weeds to dispose of. No fire hazard, either.

Less soluble than other triazine herbicides, Simazine is safer to use where lateral leaching in the soil might cause injury to adjacent ornamental plantings or crops. And it's relatively non-toxic to humans and animals.

Note: in Southern areas, where winter rainfall is heavy, application should be delayed until late winter or early spring.

For full details on highly effective weed control with one spray of Simazine this fall, write to:

**Geigy Agricultural Chemicals**, Division of Geigy Chemical Corporation, Saw Mill River Road, Ardsley, N. Y. 

CREATORS OF CHEMICALS FOR MODERN AGRICULTURE

**Geigy**  
**Simazine**



*When Writing to Advertisers Please Mention WEEDS AND TURF*

## Arborists' Big Job:

# Cut Out the

*"Little"*

# ACCIDENTS

Results of another *Weeds and Turf*  
field research project.



**Safety rope** is the best accident preventer for climbers. But while keeping eyes peeled for trouble aloft, this article says, look out for the routine practices which may cause mishaps.

**T**REE workers have an appalling number of accidents each year. Lost job time of tree trimmers is regularly 6 to 7 times as great as for other industry averages. Tree companies, as a result, have to pay higher insurance and workmen's compensation rates.

Earlier this year, officers of the National Arborist Association encouraged *Weeds and Turf* to look into the accident record and statistics of the tree service industry and try to come up with some solutions to this expensive problem. NAA supplied us with accident records from 1958 to 1962 which were compiled by the Ohio State Industrial Commission. These accident records are very revealing.

A quick look at the itemized accident causes in these statistics shows that the majority of tree company accidents do not happen to workers doing the hazardous work for which the industry is famous.

Veteran climbers don't often get hung up in ropes. Specialized trimmer-lift workers don't fall from buckets. Line clearance men are cautious near energized wires; electrocution deaths are rare compared to the rash of accidents which occur while workers perform "safe" jobs on the ground.

The overwhelming number of

accidents result from careless use of tools, clumsy misfootings, strains from overexertion, and not watching what fellow workers are doing.

### Watch 18-25 Age Group

Records show that men between 18 and 35 have most accidents; this is understandable because strenuous work requires young men. But the group 18 to 25 has 25% more accidents than the 26 to 35 group. What kinds of accidents are these men involved in?

Ohio's Industrial Commission statistics show men most often *fall from, slip on, pick up, or are hit by* things which cause *bruises, lacerations, fractures, sprains, and strains*. There are other less common injuries also.

What can tree companies do to try to cut down these small but numerous accidents? Although arborists must pay a high insurance premium for all of their employees under 25, it would not do to refuse young men jobs. They will someday learn to climb, cable, brace, and work from a trimmer lift; their training for these jobs must start early.

It appears though that companies train their men for specialized work, but neglect training for commonplace work.

Owners should not take for granted that a new employee knows how to lift a heavy log correctly, that he knows how to use a hand saw without injury, or can carry an axe or even a gouge without injuring himself or someone else.

An obvious need for industry-wide safety reorientation exists. Routine jobs cause more accidents. Men have to be taught, not just told, how to do simple jobs safely.

### Six Points for Safety

We have in mind a 6-point program to help reduce accidents:

1. Screen New Employee Attitudes
2. Hold Safety Seminars
3. Teach by Example
4. Use Safety Posters in Trucks
5. Put Colored Adhesive Sticker Reminders on Misused "Safe" Tools
6. Start an Employee Safety "Court"

Careful screening at applicant interviews will show managers whether young men can handle themselves and tools responsibly. Close estimation of the applicant's common sense will reveal if he will perform the way

(Continued on page 18)

## Pictorial Guide to Tree Crew Safety



This man uses a chain saw where he has plenty of room to move away in case the saw bucks, and avoids the other side of the log because of cramped quarters and stubs sticking up from the ground. Note gloves, tucked-in sleeves.



When working on a street with a trimmer lift (above left), groundmen serve as flagmen to keep traffic moving smoothly. The trimmer is signalled when traffic approaches so he won't drop brush on passing car. On the right above, groundmen coiling rope keep a sharp eye peeled for weak spots in rope, and call the foreman for an inspection of questionable strands.



Axemen should carry tools properly at side, away from co-worker as this crewman is doing. Don't swing tools and don't carry them over the shoulder. The partner's responsibility here is not to walk behind, but to stay at the side out of the way of the axe.



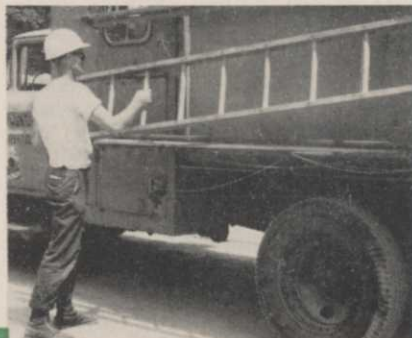
To avoid gasoline spillage this Asplundh man uses a plastic funnel which screws into the filler hole of his chain saw.



The groundman is properly attired for feeding brush into chipper. He wears helmet and goggles, stands back from hopper, and keeps his hands away from hopper by handling brush by the smaller branches. Modern chippers have every possible safety measure built into them, but the operator must nevertheless be properly attired, and follow even the most routine safety precautions.

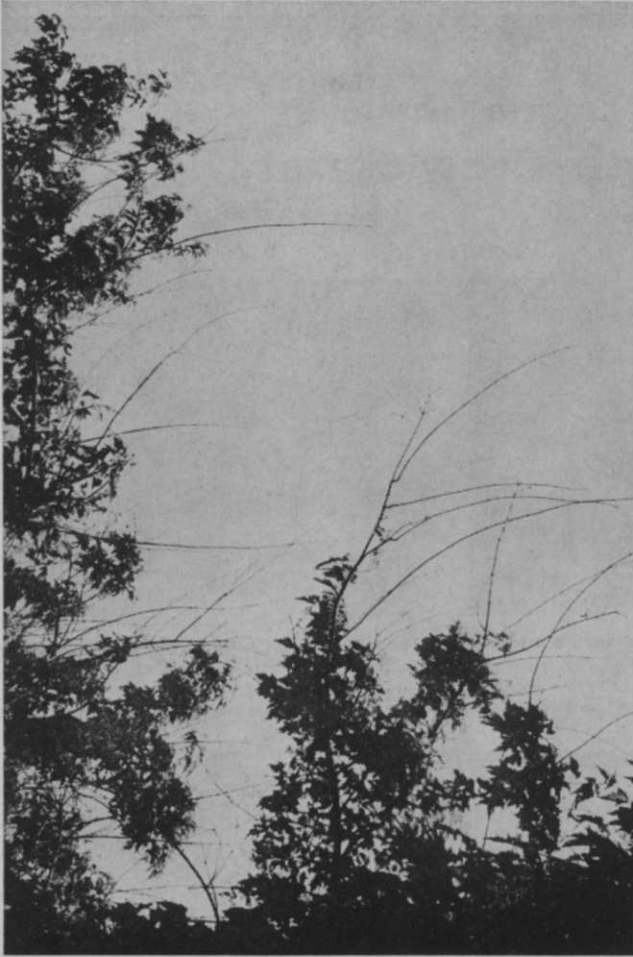
Photos by  
Weeds and Turf

After climbers are in trees, remove ladders immediately and place them safely out of the way, preferably on the trucks where racks are provided. This way they won't get knocked over nor will anyone fall over them.



A good groundman will steady the ladder while climbers ascend. This man stands on the ladder and pushes his weight forward to keep it from bouncing. There are two safety ropes in this shot because there are two men in the tree.





**Dieback of exotic maples** from winter cold in Maine. The entire subject of noninfectious tree diseases is rapidly being put into its proper importance in tree maintenance.



**Conspicuous cracking of paper birch stem.** Whether caused by cold, heat, or lightning, repeated opening following annual healing has already stimulated formation of a "rib."

## **Noninfectious Tree Disease, Part 1**

### **Effect of Cold Injury and Freezing**

**I**N SPITE of the dramatic and conspicuous destruction wrought by such well-known infectious tree diseases as Chestnut Blight, White Pine Blister Rust, Elm Phloem Necrosis, Dutch Elm Disease and Oak Wilt, it is possible that over longer periods of time, diseases of noninfectious origin may cause greater losses than infectious ones. Infectious diseases are those whose primary causal factors are bacteria, fungi, or viruses, and infection is the establishment within living tissue of such disease-causing agents. By contrast noninfectious diseases are caused independently of such pathogenic agents.

Although some noninfectious

**By DR. RICHARD CAMPANA**

Professor of Botany, University of Maine  
Orono, Maine

diseases are the direct or indirect result of man's activities, most of the causal factors leading to disease are the diverse and natural aspects of the environment to which a tree is exposed. Here it may be well to explain the concept of disease which we will consider.

A disease is considered to be a sustained process of physiological changes, harmful to the living organism affected. These changes are expressed in physical and/or chemical alterations

of trees affected, and their outward manifestations are symptoms of internal trouble. Diseases of trees (and of men) were regarded by the ancients, as expressions of the "Anger of the Gods." Later, in Biblical times the influence of adverse weather in causing plant disease was recognized generally. So solid was this view that as late as a hundred years ago, before the germ theory of disease was accepted, most plant diseases now known to be infectious were attributed to adverse weather.

Following the knowledge that disease may be infectious and that known infectious agents are microorganisms, the concept developed that disease was essen-