

LM REPORTS

YOUR GUIDE TO PRODUCT RESEARCH

SOFTWARE/APPS



Landscape Layers

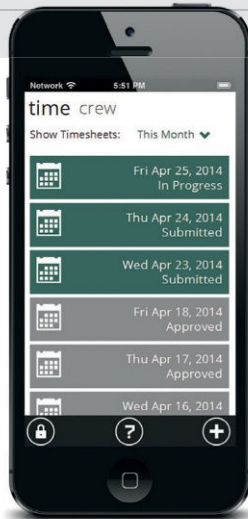
Landscape Layers cloud-based software integrates with the WheelitOff measuring tool app to let professionals create, measure, manage and track proposals in real time. Use the preloaded specifications included or customize your own. The average learning curve is less than an hour, the company says. A five-day free trial is available.

Landscape Layers // LandscapeLayers.com

Fleetmatics Reveal

Fleetmatics Reveal GPS vehicle-tracking offering is designed to drive savings and improve productivity for mobile workforces. It includes a comprehensive set of features, including native apps for iPhone and Android, designed to provide clear visibility into field activity as well as insight into driver behavior and workforce productivity metrics.

Fleetmatics // Fleetmatics.com



LMNTime

LMN's mobile timesheet software offers simple, easy-to-learn paperless timesheets; live, real-time job hours tracking; GPS-verified time records; and job, employee, billing and payroll reports. In addition, it syncs to QuickBooks for instant payroll and jobcosting data.

Landscape Management Network // GoLMN.com

Natural Insight

Supporting 40,000 professionals in more than 70,000 locations worldwide, Natural Insight provides cloud-based workforce management software. With HTML5 technology, employees are able to accept work assignments, check in and out with GPS, take surveys and provide visual verification of a job—all on their mobile devices.

Natural Insight // NaturalInsight.com



Xora StreetSmart

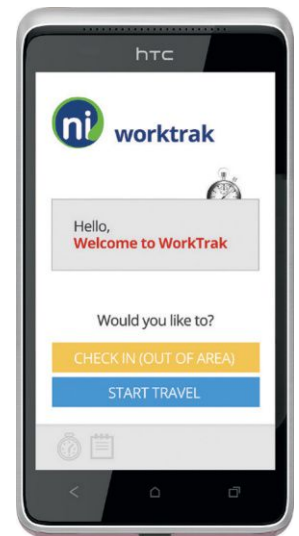
Xora StreetSmart features enhancements to the Mobile Forms and Mileage Manager apps. Managers can access all submitted form data from a single page, with filters for quickly narrowing in on the desired data, plus the ability to edit or complete partial form submissions. In addition, they can export a PDF of the User Route Map, which displays the actual route of a trip taken compared with the Google Maps suggested route.

Xora, a ClickSoftware Co. // Xora.com

JobFLEX Android app

Based in Michigan and designed by contractors for contractors, JobFLEX released an app that's compatible with all Android 4.0 devices (phones and tablets). It includes a web portal with customer management, scheduling, digital file storage and data export features to keep the back office running as smoothly as the sales process. A free, live demo is available.

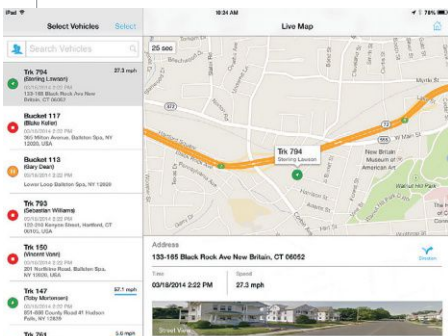
JobFLEX // Job-Flex.com



QuickBooks Trends **intuit.**

Want to find out how well your competitors are doing? Without infringing on anyone's privacy, the new QuickBooks Trends widget draws on the financial data of more than 550,000 small businesses that use QuickBooks Online to give you a free peek into your competitors' business. Filter data by industry, location and revenue to see the sales growth, ratio of new and existing customer sales, expenses and income by category and more.

Intuit // QuickBooks.intuit.com/trends



LANDSCAPE LIGHTING

LED-HL38

The weatherproof LED-HL38 floodlight saves energy while illuminating outdoor signage, architectural details and landscape designs. The 16W fixture replaces 100W incandescent lamps, and has a cool white 4700K color temperature with 800 lumens. The bronze-finish, bullet-shaped head is adjustable with sure-grip locks. It measures 9 in. by 5.5 in. and fits standard mounting units.

Orbit Industries // OrbitElectric.com

2106 Up & Accent Luminaire

Made in America and ideal for landscapes using reclaimed water or with high soil additives, the 2106 Up & Accent fixture combines heavy-gauge



brass and composite materials. Its robust composite knuckle is corrosion-resistant, featuring a polyester powder-painted finish to match the fixture and isolate the metal from the soil. An oversized silicone O-ring protects against dust and moisture.

Vista Professional Outdoor Lighting // VistaPro.com

LuxorWi-Fi

With the FX Luxor app users can control zoning and dimming with iOS and Android devices. The system consists of three parts: the Wi-Fi Module, which links Luxor ZD controllers to iOS and Android smartphones and tablets using the Luxor app; the Light Assignment Module (LAM), which allows smartphone or tablet group assignment of every fixture attached to a Luxor ZD system; and a new indoor mount that allows the Luxor ZD facepack to be remotely mounted inside a home or garage.

FX Luminaire // FXL.com



VISTA LANDSCAPE LIGHTING SOLUTIONS

IN ITS 30TH ANNIVERSARY YEAR,
Vista's well-established way of doing business
continues to empower success.

- » **Specification-grade lighting solutions** for wide-ranging applications
- » **Vertically integrated manufacturing processes** assure product integrity and accommodate customization
- » **On-site reliability**, durability, and ease of installation
- » A level of **customer service** that is second to none
- » Industry-leading **technical support** and **hands-on training**
- » **American made** right down the line

EXPERIENCE THE VISTA DIFFERENCE.

Explore all the resources that will prove invaluable for your business here:
vistapro.com/landscape



**LANDSCAPE
LIGHTING**



800-766-8478 | www.vistapro.com

UTVS & ACCESSORIES



Brutus

The four-model Polaris Brutus commercial side-by-side utility vehicle lineup offers front-end power take-off (PTO) capability. Using a multilink coil over De Dion rear suspension, the Brutus minimizes suspension sag when the 1,250-lb. capacity rear cargo box is fully loaded. It maintains excellent ground clearance when trailering with its 2,000-lb. towing capacity, the company says. All models feature Polaris' Lock & Ride cargo system and come with a 12-month standard warranty.

Polaris // Polaris.com/Brutus



OxCart

A utility cart designed to move heavy loads with a mower or UTV, OxCart is now available for turf, lawn and landscape professionals. It features an exclusive power-assist lift and reduces dumping effort by up to 90 percent, the company says. Run-flat tractor-grade turf tires move heavy loads rut-free across turf and lawns. The side dump rotates 110 degrees from either direction, making it easy to place heavy loads.

OxCart // OxCart.com

5600 and 5610 Toolcats

The Tier 4-compliant 5600 and 5610 (pictured) Toolcat utility work machines incorporate a non-diesel particulate filter engine solution. They feature a traction control system designed to provide operators with better mobility when ground conditions are conducive to traction loss or the machines' wheels encounter obstructions, such as rocks or debris. Towing capacity for both machines is 4,000 lbs., enabling the efficient transport of trailered supplies and light equipment up to a speed of 17 mph, the company says.

Bobcat Co. // Bobcat.com



Carryall

The Carryall utility vehicle series features 14-hp Subaru engines with electronic fuel injection—boosting horsepower by 30 percent and fuel efficiency by up to 50 percent over previous models, the company says. Rustproof aluminum frames increase durability. An optional track-based bed attachment system accommodates tool holders, water cooler and bucket holders, backpack blowers, tool boxes, etc. Most electric models come with an exclusive combination of an on-board, high-frequency charger with integrated cord retractor.

Club Car // ClubCar.com



Gator

The 2014 John Deere Gator lineup features updates that focus on operator side retention (OSR), winch enhancements and specific performance tweaks to each model category. A net OSR is part of the base configuration for the HPX, XUV heavy-duty and mid-duty models. Stylized poly doors can be ordered in lieu of nets for certain models.

John Deere // JohnDeere.com/Gator

