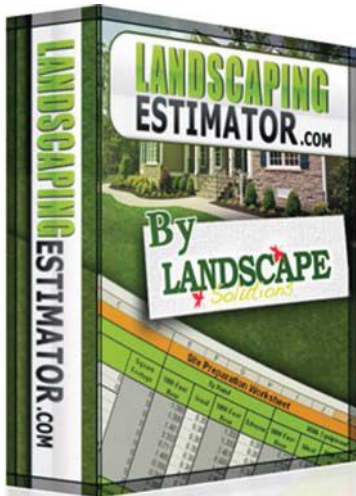


# LM REPORTS

YOUR GUIDE TO PRODUCT RESEARCH

## BUSINESS SOFTWARE



### Landscaping Estimator

Landscaping Estimator is Excel-based software for all facets of estimating landscaping, including hardscaping, water features, erosion control and special projects. Features include invoicing, change orders, cost analysis, materials lists and numerous reports.

**Landscaping Solutions LLC** //

[LandscapingEstimator.com](http://LandscapingEstimator.com)

### Virtual Property Architect

This design software enables users to simultaneously create 3-D designs and detailed 2-D plans from a catalog of actual industry products. Features include real-time sun and shadows, plus the new SketchUp Importer.

Each design can be saved and shared online as a complete 3-D virtual property with screen shots, high-definition videos, project photos and the 2-D plan.

**VisionScape** // [VisionScape.com](http://VisionScape.com)



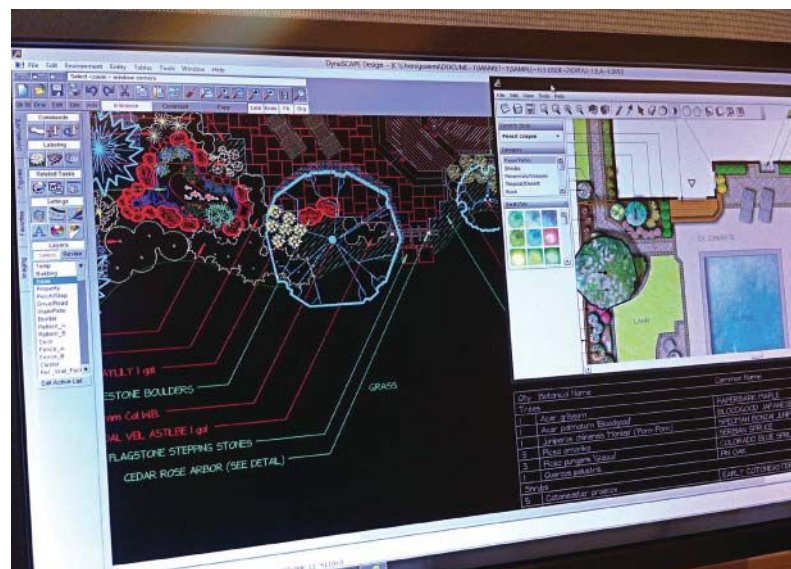
### Square Foot Advantage Calculator

This mobile-ready application is designed to compare real-world data and the total cost-in-use of controlled-

release Driven By Duration fertilizers vs. ordinary or conventional fertilizers. Variables include square footage, the number of times an area is fertilized annually and the overhead cost (product and labor), both by square foot and by total area fertilized.

**Agrium Advanced Technologies** //

[DrivenByDuration.com](http://DrivenByDuration.com)



### DynaSCAPE Design

DynaSCAPE Design's CAD tools, which integrate with the rest of the DynaSCAPE Suite, offer the ability to present landscape designs in black and white, full color or 3-D. Users can insert pre-drawn shapes from an extensive symbol library and add plants from the HortiCopia-powered online database.

**DynaSCAPE Software** // [DynaSCAPE.com](http://DynaSCAPE.com)



## LandSpec Pro

This new, free mobile app lets users create profiles for multiple projects, upload site plans into a smartphone and quickly build plant and materials lists for each. LandSpec Pro assembles shopping lists for multiple projects at each vendor, and geo-positioning allows the mobile device to map out the best route.

**LandSpec Pro LLC** // [LandSpecPro.com](http://LandSpecPro.com)



## Px3 Maintenance Package

Need the total square footage of a maintenance job but don't have time to walk it? The John Deere Landscapes Px3 Maintenance Package gives a customized portfolio on scope of work and square footage, as well as a pricing quote for turf, planting beds, trees and other items.

**John Deere Landscapes** // [JohnDeereLandscapes.com](http://JohnDeereLandscapes.com)

## HARDSCAPE



## BPR25/40 Series

Designed with the size and maneuverability of a single-direction plate compactor, BOMAG's BPR25/40 series reversible plate compactors offer high centrifugal forces and convenient maintenance features. With a working width of just 15.7 in., each plate compactor works in confined areas larger reversible plates cannot reach, making the series useful for landscaping, site prep, patios, sidewalks and other mid-size applications.

**BOMAG Americas** // [BOMAG.com/us](http://BOMAG.com/us)

## Smart-Bit Pro Plug System

The new Smart-Bit Pro Plug System for decking, wide-plank flooring and woodworking projects includes the Pro Plug tool for wood, the Pro Plug glue nozzle (not pictured) and the Pro Plug plug & fastener kit in different wood species and fastener sizes. These combine to quickly and consistently create plugs in less than half the time of other plugging methods.

**Starborn Industries** // [StarbornIndustries.com](http://StarbornIndustries.com)



## Edgetite paver edging spikes

Created by a landscape contractor, new Edgetite spikes help solve the separation problem that can occur when installing paver edging: When hammered in, the patent-pending angled tip design deflects away from the installation, while the head pushes the edge restraint tightly against the brick. Watch the demo at [Edgetite.com/videos](http://Edgetite.com/videos).

**Edgetite Products** // [Edgetite.com](http://Edgetite.com)





### Bufftech Danbury picket fence

Replicating the look and feel of true wood, Danbury with Select Cedar is now available in white, almond, natural clay, arbor blend, arctic blend, sierra blend (pictured) and weathered blend. The easy-to-install, 4-ft.-tall fence offers weather-resistant vinyl construction that the company says will not corrode, peel or discolor. Reinforced bottom rails eliminate sagging and bowing.

**CertainTeed Corp.** // [CertainTeed.com](http://CertainTeed.com)

### Deck boxes

Help customers store outdoor cushions, flower pots and more. Available in large (42 by 22 by 22 in.) and king (60 by 28 by 24 in., pictured), these deck boxes feature watertight storage and base panel openings that allow for air circulation. They're manufactured from a high-grade synthetic for the look of real wood without the maintenance.

**Highwood USA** // [Highwood-USA.com](http://Highwood-USA.com)



### Decorative metal and plastic grates

Trade up to decorative channel and catch basin grates for incremental sales and profit by offering a decorative option for a premium for new or replacement grates. They're available in grey, black, green or desert sand colors, plus cast iron. Designed for flow rates greater than 14 percent, the channel grates are heel proof and compliant with the Americans with Disabilities Act.

**NDS** // [NDSPro.com](http://NDSPro.com)



For over 40 years, Air-O-Lator has been making eco-friendly, high performance products. **Font'N-Aire** fountains combine aesthetic beauty with a natural way to improve water quality and health. Backed by outstanding customer service, Air-O-Lator fountains are easy to install, service and upgrade.

[www.airolator.com](http://www.airolator.com)

800-821-3177