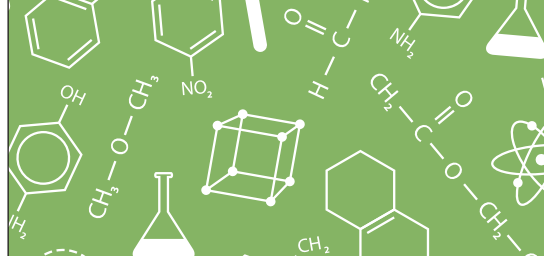


INDUSTRY SNAPSHOT

THE GREEN INDUSTRY AT A GLANCE



BROUGHT TO YOU BY
FMC

APPLIED KNOWLEDGE™

TIPS FOR SMARTER, SAFER CHEMICAL APPLICATIONS

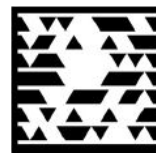
By Brian Mount | FMC

Using registered and authorized pesticides from an authorized supplier or distributor enables you to do your job effectively and stay in good standing with the law. It also helps eliminate the potential for human and environmental harm associated with illegal or unauthorized products.

The Environmental Protection Agency requires registration applicants to submit more than 100 separate scientific studies and tests. Only pesticides that “meet the highest standards of safety to protect human health and the environment” receive EPA approval. Choosing only registered and authorized pesticides and carefully following label directions is essential to protecting your customers and the planet.



Brian Mount is the Florida Market Specialist for FMC Professional Solutions.



Scan this tag with the Microsoft Tag Reader app on your smartphone to register for free label update notifications from FMC Professional Solutions. Need the mobile app? Get it free at <http://gettag.mobi>

Always read and follow label directions. FMC and Applied Knowledge are trademarks of FMC Corporation. ©2012 FMC Corporation. All rights reserved.

MUST SEE VIDEOS



A fun time-lapse video from Stamped Concrete:
<http://www.youtube.com/watch?v=8lxFmtK9HXU>



You've got to love a good tree spade video:
<http://www.youtube.com/watch?v=1rWDO1tP0Q>



Some award winners from the Minnesota Landscape Association:
<http://www.youtube.com/watch?v=RJI3B4h57wc&feature=related>

LANDSCAPING IN THE NEWS

“... if non-native landscaping is installed along phase two of the Expo Line, the MTA will gravely undermine its environmental credibility and will torpedo what could have been a boon to the Los Angeles environment.” — **LISA NOVICK**, Director of Outreach and K-12 Education, Theodore Payne Foundation for Wildflowers & Native Plants, on the Huffington Post blog discussing plans for The Los Angeles Metropolitan Transportation Authority

ON THE RISE

A look at how the industry changed from 2002 to 2007. The data from the 2012 economic census will be published in December 2013.

	2002	2007	% Change
Number of establishments	76,102	93,687	23.1%
Sales (\$ millions)	35,172	53,910	53.3%
Annual payroll (\$ millions)	11,544	17,388	50.6%
Total employment	477,932	596,896	24.9%
Sales per employee (\$1,000)	74	90	22.7%
Employees per establishment	6.3	6.4	1.4%
Sales per capita (\$)	122	178	46.4%
Population per establishment	3,781	3,216	-14.9%

Source: United States Census Bureau