

LM REPORTS

YOUR GUIDE TO PRODUCT RESEARCH

LAWN CARE: FERTILIZER & FERTILIZER BLENDS

LebanonTurf

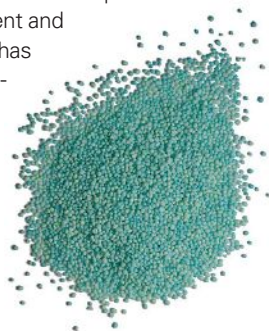


ProScape LockUp enables post-emergence control of annual and perennial broadleaf weeds in residential lawns, golf courses, parks, sports fields, sod farms and other established turf-grass. The granular product provides activity at

low use rates — generally 0.02 to 0.06 lbs. of active ingredient (penoxsulam) per acre — and can be used on wet or dry foliage and on warm- and cool-season turf. The specialty fertilizer/herbicide also includes Lebanon-Turf's MESA, the first nitrogen source to combine ammonium sulfate with methylene urea in a single particle. LebanonTurf.com

Agrium Advanced Technologies

The XCU 10-Week Mini feeds turf for 10 weeks or more, and is — according to the manufacturer — the longest-lasting, mini polymer-coated, sulfur-coated urea (PCSCU) on the market. Along with the XCU 8-Week Mini and regular-sized XCU products, the fertilizer offers a consistent and predictable release profile. It also has a low risk of leaching and volatilization, which means nutrient losses to the environment are minimized. AgriumAT.com



Agrotain International

Providing consistent nitrogen feeding for as long as eight weeks, UFLEX is specifically intended for turf uses where repeat application is desirable. It features an exclusive inhibitor that blocks urease, which helps to minimize nitrogen loss to the atmosphere — allowing time

for rainfall and irrigation to effectively transport nitrogen to the root zone for plant utilization. Once in the soil, another inhibitor keeps it in a plant available form, ensuring no other losses occur from denitrification or leaching. AgrotainTurf.com/uflexx.php



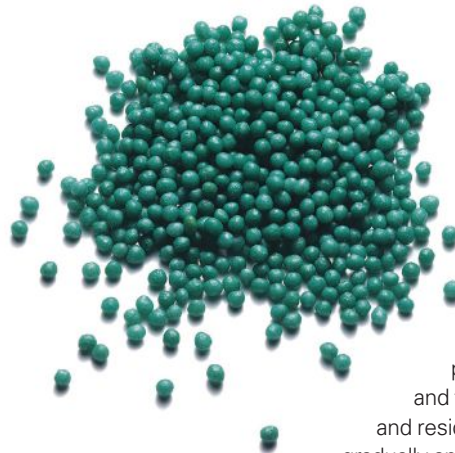
Harris Seeds

Harris is the primary distributor of Worm Power organic fertilizer in the United States. Certified by the Organic Materials Review Institute (OMRI) for organic

production, the product is odorless and considered safe for use around children and pets, the company says. Its fine, crumbly texture — like that of ground coffee — makes it easy to spread and handle. It delivers a guaranteed NPK analysis of 1.5-0.7-1.5, plus abundant micronutrients and a robust community of beneficial microorganisms essential for plant production. HarrisSeeds.com

Masterblend/Tyler Enterprises

Greensward was developed for athletic field maintenance, grounds maintenance and landscaping professionals to develop and maintain strong and lush turf. Constant use and play can cause your turf to lose strength and make it more susceptible to insects, weeds and even total loss. Greensward is specially formulated and custom blended to provide turf the strength it needs and the beauty you want. Masterblend.com/turf.html



Harrell's

Harrell's is the exclusive eastern formulator and a leading distributor of Polyon Controlled-Release Fertilizer, which has been used by turf professionals for nearly 20 years. Its patented Reactive Layers Coating technology is backed by many years of basic and applied research, both in laboratories and field applications on commercial turf and residential lawns. Nitrogen is released gradually and consistently via temperature-controlled diffusion and it is not affected by moisture. The controlled release of nutrients helps professional turf managers achieve green, healthy turf and lawns for up to seven months. And, because nutrients are released gradually throughout the growth cycle, there is less nutrient loss to the environment. Harrells.com/focus/polyon

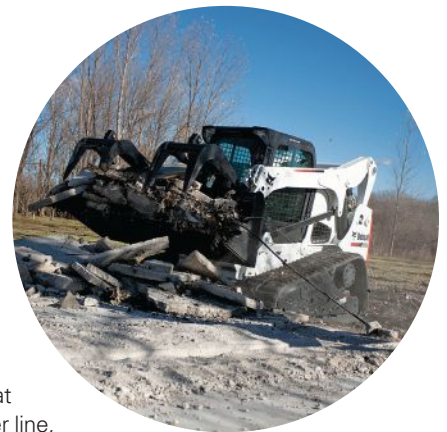
MAINTENANCE: COMPACT EQUIPMENT



Toro

Toro has upgraded its compact equipment line with the new TRX-16 (pictured) and TRX-20 walk-behind trenchers, replacing the TRX-15 and TRX-19 models. Along with the Toro TRX-26 model, these gas-powered machines make trenching easier with a tracked design and operator-friendly controls.

The new models are equipped with powerful 4-cycle Kawasaki twin-cylinder engines with a large oil reservoir to help maintain low engine temperature and prolong engine life. Delivering 10 gpm of hydraulic flow at 2,900 psi to the boom helps maximize digging efficiency. Each unit is also equipped with a standard hydraulic oil cooler that provides a cooler running machine in the most demanding conditions. Engineered with a low-profile tracked design, the Toro TRX models provide a low center of gravity for performance on a wide range of ground conditions. Tracks help the operator maneuver over perpendicular trenches effortlessly, where wheeled units may get stuck in the existing trench. The Toro TRX trenchers can be outfitted with a 24-, 36- or 48-in. boom. All three models offer chain widths of 4 or 6 in., and the TRX-26 has an additional 8-in. chain configuration. Available accessories include a backfill blade, a boring attachment and a custom TRX trailer. Toro.com/trx



Bobcat Co.

The new T750 joins the Bobcat M-Series loader line, which includes the T630, T650, T770 and T870 compact track loaders and the S630, S650 and S850 skid-steer loaders. It delivers a lift height-to-hinge pin measurement of 132 in. — more than 3 in. higher than a T300. It also features a 23 gpm standard hydraulic flow, an operating weight of 10,327 lb., a rated operating capacity of 3,325 lb., and it's powered by an 85-hp turbo-diesel engine. New job-enhancing features were added to the optional deluxe instrumentation panel. Available only on M-Series machines, the panel intelligently monitors key loader functions, and the keyless start helps prevent theft. The new 5-in., full-color LCD screen offers better readability and interaction. Easy-to-read virtual sweep gauges allow the operator to quickly read and understand the machine's performance. Bobcat.com



Case Construction Equipment

With a large boom and arm for greater reach, the new Case CX55B compact excavator delivers 11,240 lbf of bucket digging force. Its 39.3-hp engine, operating weight of 12,295 lb. and dig depth of 12 ft. 10 in. give the CX55B enough size and power for tackling a variety of applications. Plus, its compact size and cab height of 8 ft. 4 in. make the Case CX55B excavator as easy to trailer between jobsites as a skid steer. Large front and rear windows improve operator visibility, while a new slide-up front window improves air flow and helps the operator communicate more effectively with co-workers near the machine. CaseCE.com

Ditch Witch

Fast, powerful, simple to operate and easy to steer, the Ditch Witch RT24 compact trencher offers a choice of high-flotation tires or heavy duty tracks, plus an optional Roto Witch boring attachment that helps you install utilities beneath driveways, sidewalks and other surface improvements with minimal turf disturbance. The fully hydrostatic, 22.3-hp unit was designed with more weight on the digging chain, so it can put more product in the ground faster. A special trail wheel supports the oscillating tracks to help reduce breakover and increase stability over uneven and rough terrain; tracks "walk" or oscillate 12° for extra stability. Its trenching capacity is 48 in. deep and 8 in. wide, and easy hand controls are grouped conveniently at the operator's station. The optional backfill blade, available only from

the Ditch Witch organization, eliminates the need for shovels and manual labor. DitchWitch.com

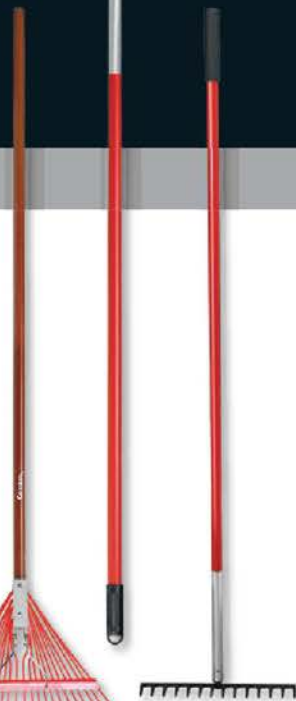


Steam Jenny

Steam Jenny introduces four models of direct-drive cold pressure washers. All models are designed for maximum durability and portability. The pressure washers are powered by 9- or 13-hp Honda GX Series engines and feature a triplex ceramic plunger pump, which requires little maintenance. The units are available with pressure ratings between 3,000 and 4,000 psi, and flow rates vary between 3 and 4 gpm. The chassis is backed by a 7-year limited warranty, and other components are covered by a 1-year limited warranty. SteamJenny.com



Save Time,
Save Money,
Season After Season.



Performance and Durability

28 CORONA RAKES FOR LANDSCAPING

Approaching a century of superior quality tools, Corona tools are designed to help you achieve your goals by getting the job done right, in less time, with tools that are built to last. After all, time is money and in today's economy, poor quality tools will cost you both.

Corona offers a complete line of rakes and landscape tools that are built to last and ready to go to work, everytime you reach for them. Season after season.



Scan on your smartphone to view our complete line of rakes
Get the free mobile app at
<http://getfaq.mobi>



Connect with Corona ToolIt!
800.847.7863 | coronastoolsusa.com

CORONA
SEASON AFTER SEASON