



FIRSTCUT

NICOLE WISNIEWSKI EDITOR-IN-CHIEF

Contact Nicole at 216/706-3735 or via email nwisniewski@questex.com.

Give a little, get a little

My neighbor, Sean, is one of the most giving people I know. I live in the Cleveland snow belt, and we had some serious accumulation early this year. One morning, just as I was putting on layers of warm clothes and boots and grabbing the snow shovel, he walked his snowblower over to clear my driveway. He saved our backs more than a few times this winter.

In the spring, he is usually the first one to mow his lawn ... and the common areas on our street ... and some of the neighbors' yards. He cruises around on his mower, and before we've even had our first cup of coffee, he's done. "I enjoy it," he says, and leaves it at that.

Sean's giving attitude inspires others on the street. After one particularly bad winter storm, he started clearing neighbors' driveways before many made it home from work. Once they got home, at least four other neighbors joined in. Before long, the impromptu crew had every driveway on the street cleared.

My husband and I tend to feel guilty after these generous acts. We always want to reciprocate. But, most of the time, Sean refuses to let us.

So I tend to talk about him ... a lot. He owns a window and door installation business, and I recommend him ... a lot. His regular unselfish acts speak volumes about his character and, in my opinion, his work ethic.

One person doing something for someone else is great. But an entire industry providing needed services across the country is extraordinary.

On April 22 – Earth Day – more than 3,000 Green Industry professionals put a hold on regular business to donate their services to various community projects in 38 states across the U.S. and Canada during the Professional Landcare Network's 2nd annual Day of Service. *Landscape Management's* Ron Hall, Dan Jacobs and myself traveled to Ohio, Colorado and Connecticut, respectively, to join various landscape teams in their efforts.

For each of us, it was a special experience:

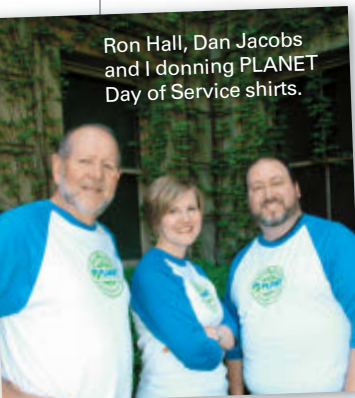
- ▶ Because of a lack of funds and ongoing vandalism at Tarlton, OH's Cross Mound Park, the entrance gate remains closed to visitors. But Ron witnessed its potential reopening because of Mirrorscapes' service.
- ▶ After hearing about Riverside Cemetery's years of

water challenges, Dan watched industry efforts pick up the spirits of cemetery overseers and give new, more sustainable life to the 134-year-old grounds.

▶ And I witnessed the New Milford, CT-based YardApes' crew give all of their effort — without earning a penny — to benefit the community's children.

These events gave back to us in more ways than one. Now it's our turn. In this issue, we showcase these teams' distinctive projects and highlight what it did for them, both personally and professionally.

Who says one good deed doesn't lead to another?



Ron Hall, Dan Jacobs and I donning PLANET Day of Service shirts.

Landscape Management

CLEVELAND HEADQUARTERS
600 SUPERIOR AVE. EAST SUITE 1100
CLEVELAND OH 44114 800/669-1668

EDITORIAL STAFF

Editorial Director Marty Whitford 216/706-3766 | mwhitford@questex.com

Editor-in-Chief Nicole Wisniewski 216/706-3735 | nwisniewski@questex.com

Editor-at-Large Ron Hall 216/706-3739 | rhall@questex.com

Managing Editor Daniel G. Jacobs 216/706-3754 | djacobs@questex.com

Technical Editor Pete Grasso 216/706-3775 | pgrasso@questex.com

Executive Editor Larry Aylward 216/706-3737 | lailward@questex.com

Contributing Editor Heather Gooch 330/723-3539 | hgooch@questex.com

Art Director Carrie Parkhill 216/706-3780 | cparkhill@questex.com

ADVERTISING STAFF

Publisher Patrick Roberts
216/706-3736 Fax: 216/706-3712 | proberts@questex.com

Northern National Sales Manager Dave Huisman
732/493-4951 Fax: 732/493-4951 | dhuisman@questex.com

Southern National Sales Manager Jason DeSarle
216/706-3758 Fax: 216/706-3712 | jdesarle@questex.com

Business Development Manager Ric Abernethy
216/706-3723 Fax: 216/706-3712 | rabernehy@questex.com

Account Executive Classifieds Kelli Velasquez
216/706-3767 Fax: 216/706-3712 | kvelasquez@questex.com

BUSINESS STAFF

Vice President Kevin Stoltman 216/706-3740 | kstoltman@questex.com

Administrative Coordinator Petra Turko 216/706-3768 | pturko@questex.com

Production Manager Amber Terch 218/279-8835 | aterch@questex.com

Production Director Jamie Kleist 218/279-8855 | jkleist@questex.com

Audience Development Manager Antoinette Sanchez-Perkins
216/706-3750 | asanchez-perkins@questex.com

Assistant Audience Development Manager Carol Hatcher
216/706-3785 | chatcher@questex.com

MARKETING/MAGAZINE SERVICES

Reprints landscapemanagement@theygsgroup.com | 800/290-5460 x100

Ilene Schwartz Circulation List Rental 216/371-1667

Customer Services Subscriber/Customer Service
landscapemanagement@halldata.com | 866/344-1315; 847/763-9594 if outside the U.S.

Paul Semple International Licensing
714/513-8614 Fax: 714/513-8845 | psemple@questex.com

For current single copy, back issues, or CD-ROM, call 866/344-1315; 847/763-9594 if outside the U.S.

QUESTEX MEDIA CORPORATE OFFICERS

President & Chief Executive Officer Kerry C. Gumas

Executive Vice President & Chief Financial Officer Tom Caridi

Executive Vice President Antony D'Avino

Executive Vice President Gideon Dean