

PRODUCTS

TOOLS OF THE TRADE » FOR MORE INFO, GO TO WWW.LANDSCAPEMANAGEMENT.NET/SEARCH



Tough tires

Goodyear's 900-series commercial truck tires feature Armor Max Technology. They're the first commercial light truck tires in the industry to meet the new regulations set forth under the federal Transportation Recall Enhancement, Accountability and Documentation Act. For landscape contractors, these tires offer advanced compounds and construction that enhance toughness; reinforced shoulders and steel sidewalls that deliver long casing life and retreadability; and application-specific tread compounds that provide long original tread life and enhanced performance. www.goodyear.com/truck/technology/armormax.html

Geese deterrent

Bird-B-Gone Mist is an advanced fogging system that releases a grape-scented mist into the air to deter geese from large open spaces. The unit distributes methyl anthranilate, a grape extract proven to be effective in repelling pest geese. Geese do not like the scent of the extract and will take flight from the area being treated, according to the company. The Bird-B-Gone Mist fogging unit has an LCD touch screen for programming. From the control unit, users can attach up to 32 misters, controlling each one individually. Spray units can be set to go off simultaneously or at alternating times. The control panel will keep track of liquid levels, and will notify users when to refill the units. www.birdbgone.com or 800/392-6915

Hydrostatic transmission

The Allmand TLB-425 ESL heavy-duty compact tractor loader backhoe features a servo-controlled hydrostatic transmission and a 25-hp Kubota D1105 diesel engine. It features oversized polished pins with replaceable composite bearings and urethane lip seals in all working joints. The unit's industrial-class backhoe delivers a 4,611-lb. digging force and reaches up to a 9.5-ft. digging depth. Dual cylinder, 180° hydraulic cushioned swing allows precise work in tight areas. www.allmand.com or 800/562-1373



PRODUCT SPOTLIGHT
BACKHOES & TRENCHERS

Eco-friendly pots

The first plantable, 6-in. Rice Hull NetPot is the newest addition to complement the six other sizes of Rice Hull and two other NetPot sizes (7cm and 9cm) that are available from Ball Horticultural Co. and Summit Plastic Co. The new plantable unit is composed of renewable resources made of sustainable, natural plant fibers that degrade in the soil over time. Summit produces PLA filling trays to fit the 6-in. Rice Hull NetPot. PLA is also made from renewable materials and is both biodegradable and compostable. www.summitplastic.com or 800/814-3496



Grub control

The granular formulation of DuPont Acelepryn insecticide has been registered by the U.S. Environmental Protection Agency (EPA). With just one early application of Acelepryn, turf professionals can control 10 key turf-damaging white grub species plus surface-feeding insects such as cutworms, webworms, annual bluegrass weevils and billbugs, according to the company. The formulation features a low impact on non-target organisms such as beneficial arthropods as well as bees, birds, fish and mammals, and has the lowest water solubility of any white grub control product. Its active ingredient, DuPont Calteryx, is a new class of chemistry inspired by a natural substance found in the bark of trees and shrubs of the genus *Ryania*. www.proproducts.dupont.com/acelepryn or 888/6 DUPONT

More power

John Deere has added a new PowerTech E 6068 Tier 3 engine to its 710J Backhoe, improving both emissions compliance and power. The new models feature net horsepower of 126 hp, compared to the 123 hp on the Tier 2 engines, along with a host of other improvements, including higher injection pressures, variable timing and precise control of fuel injection. The 710J's dig depth reaches up to 22 ft., 4 in. when extended. Servicing is all done on the same side and accessed from the ground — no tools are necessary to open and tilt the hood, which can be tilted to 90°. In addition, exterior upgrades to the 710J include an extended grill frame that comes standard and a side louver that improves airflow to the engine. www.johndeere.com or 309/765-8000



Basket filter

Rain Bird's new Pressure-Regulating (PR) Quick-Check Basket Filter combines pressure regulation and filtration into one compact unit for enhanced reliability and faster installation. Available separately or fully integrated into Rain Bird's 1 and 1.5 high-flow commercial control zone kits, the filter features a 200 mesh (75 micron) stainless-steel filter element that protects drip irrigation components from debris, while its built-in 40-psi pressure regulator ensures that the system receives optimum water pressure. By integrating filtration and pressure regulation into one product, users can save both time and labor. www.rainbird.com/drip or 800/RAINBIRD.

PRODUCT SPOTLIGHT
BACKHOES & TRENCHERS



Request a web-based demonstration!

QXpressTM

SCHEDULING SOFTWARE

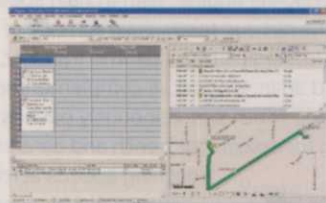


QXpress v8.0 (NEW!)

As a QuickBooks user, you should use QXpress. Getting started couldn't be easier, since QXpress instantly integrates with your existing customer list. Simply schedule new services for your QuickBooks customers, and print route lists and work orders. When services are complete enter job cost information and post them to QuickBooks as invoices! No double entry. No wasted time.

QX Mobile v2.0

QX Mobile is the most advanced PDA software available for Windows Mobile Pocket PCs. Take QXpress with you in the field to track start times, stop times, materials used, look up customer information, and sync wirelessly with the office. New in v2.0 is the ability to customize your own data entry screen, and print templates designed in QXpress.



QX Mapping

Every extra hour your crews spend behind the wheel, is an extra hour they are not generating revenue. Using Microsoft MapPoint, QX Mapping greatly reduces wasted drive time by optimizing routes and printing driving directions.

call 1.877.529.6659 or visit www.qxpress.com for a web based demonstration



QuickBooks is a registered trademark and service mark of Intuit Inc. in the United States and other countries. QXpress is a registered trademark of Albec Incorporated. QuickBooks and the "Designed for QuickBooks" Logo are trademarks and/or registered trademarks of Intuit Inc., displayed with permission. The use by Albec of the Logo does not signify certification or endorsement of Albec's software by Intuit, and Albec is solely responsible for its software and the support and maintenance of the software.

LM SEARCH ↓

Research additional tools of the trade at www.landscapemanagement.net/search

PRODUCTS

» WWW.LANDSCAPEMANAGEMENT.NET/SEARCH



Light the night

The new Orbit/Evergreen FG Series of durable 12-volt well lights features five adjustable tilting lamp models. The varied cover styles direct the light source, including full view, louvered, round hood, square hood or a vandal-resistant criss-cross cover. Each fixture measures 4.75-in. wide and has a depth of 4.5 in. Models are available in black or bronze, and are constructed from injection-molded PBT composite for longer-lasting outdoor performance. A new adjustable lamp bracket allows the user to tilt the lamp + 25° for direct illumination of the garden subject. FG fixtures also include a 20-watt MR16 lamp. www.orbitelectric.com or 800-90-ORBIT

Timber thinning

The new Fecon Bio-Harvester simultaneously fells, chips and collects small-diameter woody biomass. It can be mounted to the Fecon FTX440, a 440-hp, forestry guarded, crawler tractor; or to a large, high-horsepower PTO tractor. The FTX440 is also capable of towing and powering an agricultural dump wagon to collect material. Material is chipped using Fecon Bull Hog chipper knives or carbide tools, then augured to a material processing fan and blown into a collection unit. It can discharge from the rear or the side, enabling a variety of collection units. <http://site.bio-harvester.com> or 800/528-3113



PRODUCT SPOTLIGHT
BACKHOES & TRENCHERS

Ride-on trencher

The new Boxer 118 Dedicated Trencher is Compact Power's first ride-on, dedicated trencher. It offers an 18-hp, air-cooled Kohler Command Pro gasoline engine, with a chain speed of 280 ft. per minute. The dirt cup tooth chain is made of high-carbon steel with frosted carbide tips. The trencher, available in both 24- and 36-in. lengths, is complemented by a standard discharge auger, which simultaneously pushes the dirt away — allowing for a clean-cut trench and consistent trenching speeds across a variety of soils. www.boxerequipment.com or 800/476-9673



Compact performance

Standard Hamilton Co. introduces the Compact Dump-Pro for light-duty pickup trucks with 6-ft. beds. Like the popular full-size Dump-Pro, this 282-lb. insert features a steel-reinforced, industrial-weight, non-rusting polyethylene dump body and winch-driven drive system that requires no expensive hydraulics to operate. Its lighter weight and removable features save fuel. The unit features a 60° dumping angle, so everything that goes in, comes out. When the job is done, simply release the clamping system, disconnect the power with the removable connector, remove a single bolt and slide the unit out to get your pickup truck back. www.dump-pro.com or 866/4 DUMP-PRO

Colorful mulch

Joining the Select, Mulch Magic and Starburst colorant lines also offered by Colorbiotics, Impact colorant produces color-enhanced mulch to a level that meets expectations with less investment in raw material. The new hybrid coating was created through process optimization and advanced technology to provide a high value product. Compared to non-colored mulch products that usually turn gray or white after just a few weeks, Impact remains vibrant for a longer period of time. And once the color dries, it will not wash off or leach into soil. Available in red, ruby red and black, Impact is also specially formulated to be nontoxic to plants and animals. www.colorbiotics.com or 888/663-6980

LM SEARCH → Research additional tools of the trade at www.landscapemanagement.net/search



New paver sizes

Redland Brick introduces its Tuscan Collection Genuine Clay Pavers, the first-ever wood-molded genuine clay paver series to be available in 6-by-6-in. and 6-by-9 in. sizes. The innovative oversized molded clay pavers combine the rich color and durability of a genuine clay brick with the industry sizes that provide versatility in installation, according to the company. The new sizes allow for more sophisticated paving bonds and patterns. The new collection is currently machine-molded at the Rocky Ridge plant, making the pavers a perfect complement for Rocky Ridge face brick, and also compatible with most brick structures. The pavers are currently available in four popular Rocky Ridge colors: King William, Rustique, Cumberland and Bayshore, with additional colors to be announced later this year. www.redlandbrick.com or 301/223-7700

Waterproof connectors

King Innovation's UL 1838 compliant DryConn brand connectors include DryConn Black/White, Black/Gray, Black/Blue, King 4, King 5, King 6, King 9, and DBSR Medium with strain relief. Each of these connectors is UL 486D listed, and while they are rated for 600V, they also feature proven performance for low-voltage, waterproof splice protection and direct bury, according to the company. They can keep splices dry and ensure a waterproofed lighting system. Wire range for the entire line covers No. 6 down to No. 22 AWG. Connectors are also available in both bags and canisters, which allows for easy access to multiple size connectors throughout an installation.

www.kinginnovation.com
or 800/633-0232



TURF PRODUCTS

The Original Shower Cap™

- Keeps fertilizer dry
- See through cover
- Spill proof



Fits the following models:

Lesco – Standard & Mark II
Scotts – SR200 • Prize Lawn – Bigfoot & CBR II
Lely – 53" Model • Vicon – 400#, 650# & 900#
All 36" drop spreaders

www.turfproducts.com
440/930-7244

U.S. LAWNNS



**GROW YOUR LANDSCAPE
MAINTENANCE BUSINESS.**

NATIONAL STRENGTH, LOCAL COMMITMENT®

Want to Own a High Profile Franchise?

Does your business provide:

- Economic Stability
- Recurring Income
- Low Investment/Overhead
- Offers Financial Assistance
- Ongoing Support by Industry Professionals

Our four ideals, **Trust, Quality, Service** and **Value**, along with a "No Job Is Too Big Or To Small" philosophy, make U. S. Lawns a "cut above" the rest.

- Superior Financial Management
- Sales & Marketing Guidance
- Corporate Purchasing Power
- Protected Territories

NATIONAL STRENGTH, LOCAL COMMITMENT®

To find out more about us and the opportunity U.S. Lawns can offer you, contact:

U.S. Lawns
4407 Vineland Road • Suite D-15 • Orlando, FL 32811
Toll Free: 1-800-USLAWNS • Phone: (407) 246-1630
Fax: (407) 246-1623 • Email: info@uslawns.com
Website: www.uslawns.com



PRODUCTS

» WWW.LANDSCAPEMANAGEMENT.NET/SEARCH



Sprinkler sparkle

SprinkLites are color-changing indoor/outdoor lights that, when connected to water, function as sprinklers. They can be connected to an irrigation system or mounted to tree posts, poles or umbrellas (using slots in the base) to create a light show. SprinkLites can also be used as illuminated misters to cool the air in the heat of summer. Connecting them to a recirculation pump creates a fountain arrangement with colorful water-spitting sculptures. Choose from six faux crystal sculptured accent lights in the shape of butterflies, dragonflies and hummingbirds. www.sprinklites.com or 877/718-2477

Turf stress detection

TurfSpy, the new turf stress detection glasses from Underhill International, block out the green spectrum reflected from chlorophyll in healthy vegetation. Stress conditions, such as disease, drought, pests or poor nutrition, are revealed with glowing colors (red, coral, pink) and can be detected two to 10 days before they are visible to the unaided eye. The ANSI-approved, shatterproof safety glasses have a new wrap-around lens for more effective viewing, and an adjustable earpiece for comfortable wear while mowing. www.underhill.us or 866/863-3744

LM SEARCH ↓

Research additional tools of the trade at www.landscapemanagement.net/search

Detachable convenience

The Switch-N-Go Detachable Truck Body System turns your truck into one of your most valuable, hard-working employees. Its ability to lay the body flat on the ground and detach from the truck allows for the safe and efficient use of multiple bodies on one chassis. With a low loading angle, dirt or mulch can be lifted from ground level and onto the truck at the push of a button. Choose from dump, platform, storage, drop box, specialty and chipper bodies. www.switchngo.com or 888/311-0867



PRODUCT SPOTLIGHT
BACKHOES & TRENCHERS

Rock and roll

The Ditch Witch organization introduces the HT300, a heavy-duty, 300-hp rock trencher. Capable of trenching up to 10 ft. deep and 36 in. wide in the most extreme jobsite conditions, the steel-tracked HT300 features a sturdy undercarriage designed to withstand the rigors of rock-laden jobsites, and trencher stabilizers that automatically adjust to terrain changes to isolate vibration in rock and other harsh conditions. www.ditchwitch.com or 800/654-6481

Refillable microinjection

New Liquid Loadables are one-liter bottles of J.J. Mauget Co.'s insecticides, fungicides, antibiotics, fertilizers and micronutrients that tree care experts can use to refill their preferred injection system, allowing them to pair their tools with tree care chemistry. Current offerings include Imicide, Stemix Plus and Inject-A-Min Manganese, with Fungisol, Arbor-Fos, Abacide 2 and Tebuject 16 pending EPA approval. Mycoject Ultra antibiotic will be available in September 2009. www.mauget.com or 800/TREES Rx





Three-in-one

Cub Cadet Commercial's new 3-in-1 XP Stand-On Spreader/Sprayer offers productivity and flexibility for granular, liquid and spot-spray applications. The unit can hold 10 gal. of liquid in two separate 5-gal. tanks that can be used independent of each other, giving operators the ability to apply two different types of liquid material through the spot spray wand, or by using the boomless sprayer nozzles that have an effective spray width of 9 ft. The hopper has a capacity of 125 lbs. for dry material spreading. Other features include a premium electric start, 6-hp Kawasaki engine with charging system; a hydrostatic, variable speed drive; and a one-year commercial warranty. Retro kits are available for Lesco HP or Cub Cadet Commercial XP units. www.cubcadetcommercial.com or 877/835-7841



Water saver

Convert your sprinkler heads into a water-saving drip irrigation system in landscape shrub areas with Antelco's Drip Mate Sprinkler Conversion Kit, which includes a nine-outlet pressure regulating micro manifold, nine Shrubber 360 spikes (adjustable flow) and 100 ft. of tubing. Materials are UV-stabilized for long life. Antelco.com or 800/869-7597



High style, little space

Integrating a compact design with high photometric performance and style in street lighting, Schreder Lighting USA introduces Hestia luminaires with the Sealsafe Optical System. The optics feature a one-piece, anodized, brightened and hydroformed aluminum reflector permanently sealed on a tempered glass sag lens. A high-pressure die-cast aluminum lamp access mechanism protects the interior of the optical system, providing long-lasting photometric performance.

www.schreder.com or 847/621-5100

Increased warranty

The construction equipment division of Yanmar North America has increased the warranty to three years or 3,000 hours on its line of excavators, loaders and backhoes. This warranty covers all elements of the machinery, although it does not cover normal maintenance procedures or wear items such as tires and brakes. www.yanmar.com or 770/877-7570

PRODUCT SPOTLIGHT
BACKHOES & TRENCHERS

High Quality Mowing

INDEPENDENT INNOVATORS

Take a Test Drive Today

WALKER MOWERS

5925 E. Harmony Road • Fort Collins, CO 80528
800.279.8537 • www.walkermowers.com