

Project Portfolio

DESIGN/BUILD

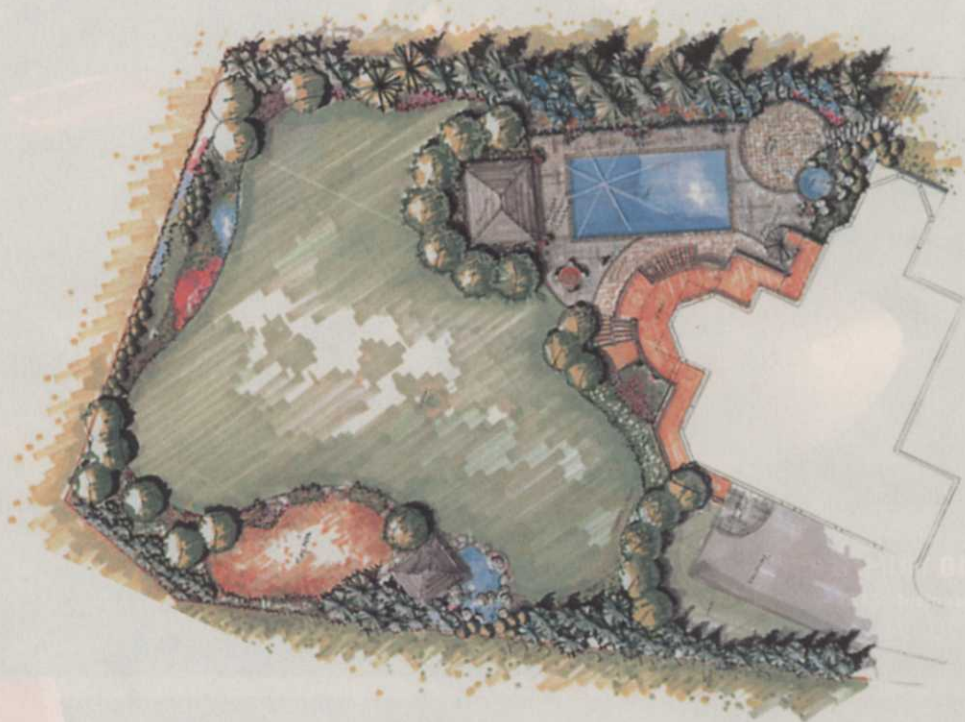
RENOVATION / OUTDOOR KITCHEN / POOL TERRACE

The design

Connecting stairways, an outdoor kitchen and a new, larger pool deck terrace were on the wish list for the occupants of this 5-year-old home.

The site before construction

A small deck, two separate staircases, a swimming pool, pavilion and landscape planting.



PHOTOS BY: ERIN B. BOGAN / MICHAEL LANDSCAPE DESIGN

Project Requirements

- Relocate the existing pavilion.
- Add a curved upper deck with new connecting stairways, an outdoor kitchen and new pool terrace – one that repeated the curve of the pergola.
- Access off the heavily used garage driveway area made materials storage and backyard access a challenge during the project.

Project Specifics

The existing hardscape and woodwork did not meet the standards of craftsmanship and design the new owners wanted.



ABOVE The pavilion was moved and centered on the new, larger pool deck, which has a detailed paving pattern and bull nose bluestone coping.

RIGHT The geometric IPE decking was fastened by a biscuit system, preventing any surface penetration to the decking.





AFTER

BEFORE



ABOVE Fiberglass architectural columns and synthetic PVC trim material are long-lasting alternatives to wood trim, and the raised panel detail of the below-deck dry storage area repeats the home's architectural detail. Also note the curved decking border boards, which were constructed by milling a 2x10 board down to 1-inch thickness and then scribing the curve. This before shot shows the original staircases and drab patio area.

Project Principal

■ McHale Landscape Design,
Upper Marlboro, MD

ABOVE The new staircase features a steel framework clad with IPE treads, PVC synthetic risers, solid 6x6 cedar posts and a mahogany rail cap. The cap was built on site by scribing the metal rail shape onto a full 2x8 piece of IPE.

This project was a Grand Award winner in PLANET's Environmental Improvement Awards program. For more information on this program, or other services of the Professional Landcare Network, please call 800/395-2522 or visit www.landcarenetwork.org.