

# HOT TOPICS

## South, led by Atlanta, best new home market while Central is 2nd

**DES PLAINES, Ill.**—If you're into new home lawn installation/maintenance, the southern part of the country is the best place to be located in.

According to Professional Builder magazine, of all homeowners in the continental U.S. seeking new homes, 44 percent reside in the South, including 24 percent in the eastern seaboard states from Maryland/West Virginia to Florida.

Areas where homeowners are most likely to buy new homes, from most frequent to least frequent:

<b>DE, WV, MD, VA, SC, NC, GA, FL</b> . . . . .	<b>24%</b>
<b>OH, IN, IL, MI, WI</b> . . . . .	<b>17%</b>
<b>TX, OK, AR, LA</b> . . . . .	<b>14%</b>
<b>CA, OR, WA</b> . . . . .	<b>14%</b>
<b>ME, VT, NH, CT, RI, MA</b> . . . . .	<b>12%</b>
<b>NY, PA, NJ</b> . . . . .	<b>9%</b>
<b>AZ, NM, CO, UT, NV, ID, MT, WY</b> . . . . .	<b>7%</b>
<b>KY, TN, MS, AL</b> . . . . .	<b>7%</b>
<b>ND, SD, MN, KS, IA, NE, MO</b> . . . . .	<b>6%</b>

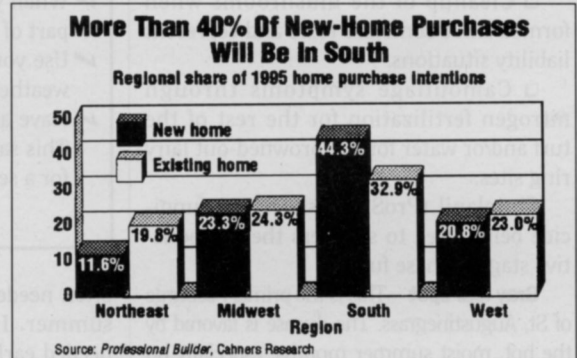
Home shoppers living in a metro area with a population of 2 million or more are most likely to choose new construction, according to the survey, which was conducted by National Family Opinion, Inc. Least likely to buy a newly-built house are home shoppers in areas with a population between 100,000 and 499,999.

Among major U.S. cities, Atlanta led the way in 1994 with 48.0% of its residents purchasing newly-built homes. According to Chicago Title & Trust's "Who's Buying Homes in America," the top cities in new-home buying in 1994:

<b>Atlanta</b> . . . . .	<b>48.0%</b>
<b>Phoenix</b> . . . . .	<b>36.1%</b>
<b>Minneapolis</b> . . . . .	<b>30.0%</b>
<b>Orlando</b> . . . . .	<b>29.6%</b>
<b>Dallas/Ft. Worth</b> . . . . .	<b>29.5%</b>
<b>Seattle/Tacoma</b> . . . . .	<b>24.8%</b>
<b>Washington, D.C.</b> . . . . .	<b>24.7%</b>

The information appeared in the April

issue of "Professional Builder," a Cahners Publishing Company magazine located here (telephone 708-635-8800).



## Dr. Bill Daniel: teacher, inventor

**WEST LAFAYETTE, Ind.**—One of the giants of the turf industry passed away Feb. 24: Dr. William H. Daniel, professor emeritus at Purdue University, author, inventor and—most of all—friend to the industry.

Dr. Daniel, who had been semi-retired in recent years, remained active almost until the end. He was a frequent visitor at national and regional conventions of golf course superintendents and athletic field managers.

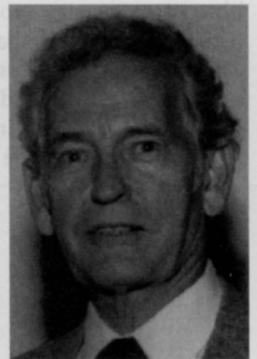
He developed both the Purr-Wick Water Management System and Prescription Athletic Turf (PAT), which is used in many major college and professional stadiums. He was senior author of the popular "Turf Managers Handbook." He was a Fellow in the American Society of Agronomy and received distinguished service awards from the Golf Course

Superintendents Association, USGA Green Section and Midwest Regional Turf Foundation.

Dr. Daniel is survived by his wife of 51 years Gwen, son Donald, daughter Sue Eiler, two brothers and a sister.

Memorial funds, according to the Midwest Regional Turf Foundation, can be sent to the Daniel Scholarship Fund at Purdue University or the Endowment Fund of the Federated Church, West Lafayette.

—Jerry Roche



## New bermuda, centipedegrass

**ATHENS, Ga.**—Two new turfgrasses will be released this summer by plant breeders at the Coastal Plain Experiment Station in Tifton, Ga. They are TifBlair centipedegrass and Tift MI40 bermudagrass.

TifBlair is a cold-tolerant centipede that grows well in acid soils. Its color, quality and green-up characteristics are similar to common centipede.

"This cultivar tends to grow faster and produce better quality turf than common centipedegrass at low soil pH in the 4 to 5 range," notes its developer, Wayne Hanna,

a USDA research geneticist. "Winter-hardiness is one of the greatest needs for bermuda, especially on golf courses where the grass is cut short and frequently."

Tift MI40 is a fine-textured, cold-tolerant bermuda adapted to close mowing and resistant to mole crickets. It is intended for use on golf course fairways, athletic fields and home lawns, according to Hanna. Tift MI40 grows well as far north as Lexington, Ky. and Stillwater, Okla.

"This bermudagrass has nice color and a much finer texture than Midiron," notes Hanna.

For more information, contact the University of Georgia Ag Experiment Station, Athens, GA 30602.