

PRODUCT REVIEW

Sound barriers install quickly, last a long time

The new Sylvia Outdoor Sound Wall uses prestressed wood that provides fast and easy installation, substantial cost savings and lasts two-to-three times longer than conventional sound walls.

Sound barrier units include wooden frames made of vertical and horizontal drilled prestressed wooden beams which surround either solid wood sound-reflecting panels or sound-absorbing panels filled with foam or mineral wool.

Frames that are longer than 13 feet need an additional supporting beam. A metal link runs across the top of the supporting concrete foundation blocks, which are placed eight to 30 feet apart, while a prestressed vertical pole secures the panel and bottom joist.

Prestressing increases the stiffness and



vertical stability of the wood panels, and provides enhanced impact resistance.

Circle No. 191 on Reader Inquiry Card

Attachment reaches highest limbs with ease

The Hedger attachment from Technic Tool Corporation is designed to quickly and efficiently shape, prune, trim and thin hedges, brush and limbs up to 1-1/2 inches in diameter.

The cutting lade is made from hardened spring steel for longer teeth life.

The Hedger attaches easily to the end of the Technic Tool Power Pruner, and allows users to safely reach and trim in areas they couldn't reach with a reciprocating hedge trimmer.

The portable Hedger weighs less than two pounds and has a steel guard for operator safety.

The Hedger is available for both the standard and insulated Model D Power Pruners.

Circle No. 193 on Reader Inquiry Card

Doppler radar predicts patterns and severity of thunderstorms

Accu-Weather, Inc. has made its proprietary StormVue Nexrad Doppler radar product available to the green industry.

Storm Vue predicts the path of thunderstorms. Individual thunderstorms are

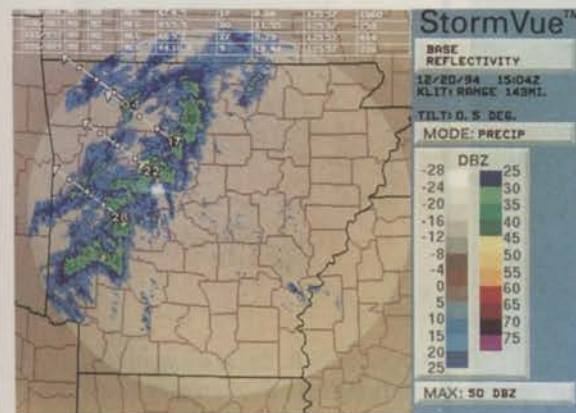
locations of storms. Boxes along the storm track indicate future positions of the storm at 15 minute intervals.

Accu-Weather's StormVue can be overlaid onto any of the 20 color graphic Nexrad Doppler radar products from any of the 88 Nexrad sites currently available from Accu-Weather.

The Nexrad storm information table identifies individual thunderstorms and contains valuable detailed information on the severity and movement of those storms. The storm information table even indicates which storms are producing hail, rotating and/or may be producing tornadoes.

Accu-Weather also allows users to overlay the storm information table onto any Nexrad product from any available site.

Circle No. 192 on Reader Inquiry Card



identified and highlighted within a boxed area. Predicted storm paths are displayed as a line or storm track.

StormVue also shows actual future



Erosion control fabric keeps roads safe from mud slides

Traffic accidents caused by mud washing onto roads in Tucson induced city officials to provide protection against erosion on the city's new Kolb Road.

Armater geocell erosion fabric made by Akzo Nobel was used. Armater is a three-dimensional, semi-rigid geomatrix designed to provide erosion protection around the most demanding engineering and excavation projects where vegetation is scarce, as in earth and slope surface reinforcements, highway embankments, headwalls and pipeline installations.

The Armater stabilizes the surface of earth and fill structures, and offers excellent slope protection and support. It provides permanent erosion control with a non-woven, polyester fabric structure that is permeable, lightweight, rot-proof and strong.

Armater's distinctive honeycomb shape may be filled with sand, clay, gravel or other native soils to assure stabilization and erosion prevention.

Circle No. 194 on Reader Inquiry Card



Walk-behind or ride new mower

The WR-1752 mower, from Rich Manufacturing is a commercial quality rotary mower that converts from riding unit to walk-behind mower without the use of a sulky or pull-behind device.

The mower goes from ride to walk positions while the machine is in neutral gear by removing a one-pin connector.

Hydrostatic transmission is by Hydro-Gear, and is combined with a gear reduc-

tion axle to reduce high pressure hoses and provide more space.

The mower was tested and developed during more than 7000 hours of lawn maintenance use.

The WR-1752 is powered by a 17-hp Kawasaki engine, and the mower uses a concentric shaft and chain-actuated control system.

Circle No. 195 on Reader Inquiry Card



New gear box ready to go for outdoor equipment

Noram introduces a gear box that can be bolted on to standard three-to six-hp engines without modifying the engines for outdoor power equipment.

The Noram gear box has 6:1 gear ratio, enables engines to maintain a normal output capacity of 10-hp, and produces a



torque of 15 ft. lbs. at a lower RPM.

It features an aluminum transmission case, heat-treated, sintered metal gears, and ball-bearing PTO shaft which accepts standard, 3/4-inch crankshafts.

Custom PTO shafts are also available.
Circle No. 196 on Reader Inquiry Card

Aeration series includes three interchangeable patterns

The Fractional Series by Otterbine uses many features from the company's other aeration systems, at a fraction of the cost.

The company describes the units as perfect for small ponds in housing developments, commercial complexes or golf courses. The line of high quality water features includes the "Starburst," "Phoenix" and "Rocket" spray patterns.

The "Phoenix" and "Rocket" patterns can be varied in height and diameter by adjusting the diffuser ring.

The units run on 1/2 hp, and



are made of stainless steel and thermal plastics. Each unit in the fractional series comes with 100-foot of power cable, st/st debris screen and a mini power center as standard features. The power center includes ground fault interrupter and a 24-hour on/off timer. As the motor is cooled by water rather than oil, the unit requires no maintenance.

Each Otterbine aerator system is electrically safety tested and approved as a package by ETL and ETLc.

Circle No. 197 on Reader Inquiry Card

New tall fescue more drought tolerant, darker

Crossfire, the turf-type tall fescue that dominated the top rankings in the National Turf Trials a few years ago, will soon be available in a significantly improved reselection from Pickseed West, Inc.

The new variety, Crossfire II, is ideal for hotter areas of the country. Recently, Crossfire II was the top variety out of 91 tested in Mississippi turf trials, and number two in Georgia.

Crossfire II also ranked number one for versatility in the 1993 Rutgers trials.

The improved Crossfire II has an increased endophyte level of more than 80 percent. It features a darker green color, improved turf quality and better drought tolerance than its predecessor.

Circle No. 198 on Reader Inquiry Card

Mulch leaves two ways with versatile mowers

The Cushman 6150 riding rotary mower is available with a choice of two leaf mulching kits.

The kit's heavy-duty screens adapt to either 35- or 41-inch cutting decks, and encase the blades for uniform mulching. Rear rubber deflectors help to evenly distribute the mulched leaves, thus improving the appearance of the grass.

The 6150 is designed to be used on large turf areas. Its "wing" configuration allows for cutting with one, two or all three decks. The mower also features a zero turning radius, four-wheel drive and a 7-acres/hour capacity.

Circle No. 199 on Reader Inquiry Card

Flowable fungicide more concentrated

Sostram Corporation, maker of the Echo line of fungicides, has introduced a new, more concentrated Echo 720 Turf



and Ornamental flowable chlorothalonil fungicide for broad-spectrum disease control, including dollar spot, large brown patch, red thread, Helminthosporium leafspot and melting out.

With 6 lbs./AI/gal., Echo 720 delivers more disease control activity per ounce with less material applied per treated acre.

The more concentrated formulation provides better cost effectiveness thanks to labor-saving handling, less storage space requirements and fewer container disposal problems. Echo's technical chlorothalonil exceeds 99 percent pure active ingredients.

Circle No. 200 on Reader Inquiry Card

Software provides degree-day forecasts

Spectrum Technologies, Inc. has an affordable Growing Degree Days software program that helps track growth factors needed to determine approximate growth stages.

You also can make better management decisions regarding fertility, insects, diseases and weeds.

The software program is designed to help the turf manager eliminate manual calculations and growing degree-day record keeping. Use the speed and convenience of your computer to determine growing degree days.

Users can select up to six different crop and field combinations, along with their respective lower and upper temperature thresholds. To operate, simply indicate the particular planting date and click the "calculate" button to display degree days for that period.

Circle No. 201 on Reader Inquiry Card

Pump priming, pressure control for PTO pumps

The 6010 Series control unit from UDOR USA, Inc. is designed for easy pump priming and pressure control.

The 6010 is used for controlling pressure and by-pass on positive displacement pumps up to 18 GPM and 300 PSI.

The control was originally designed for gasoline engines, but can now be used on PTO-driven pumps.

Body parts and seals are suitable for use with most insecticides and herbicides.

Circle No. 202 on Reader Inquiry Card

T&O herbicide controls variety of weeds

Fusilade II, a turf and ornamental herbicide from Zeneca Professional Products, has been approved by the Environmental Protection Agency.

Fusilade II is a selective post-emergence herbicide for controlling a wide variety of annual and perennial grass weeds.

Fusilade II controls grass in ornamental nongrassy plants, trees, shrubs and ground covers grown in commercial greenhouses and nurseries. It can also be used to suppress and eventually control some problem grasses in commercial turf areas, as well as turfed areas on golf courses.

Fusilade II controls virtually all grass weeds in non-crop areas, including airports, electric transformer stations and sub-stations, around buildings, on roadsides and on rights-of-way areas.

Circle No. 203 on Reader Inquiry Card

New formulations for natural biostimulants

Roots 2 and ironRoots 2 biostimulants have replaced their original "parent" products this year, according to Roots, Inc. The company describes the new products as more useful and effective than its first biostimulants.

ironRoots 2 is a natural biostimulant that contains four percent fully-chelated iron phosphate-citrate for improved stress tolerance and appearance in turfgrass and acid-loving plants.

Roots 2 enhances growth—plants grow greener with larger roots—and also greatly improves fertilizer efficiency, allows reduced nitrogen rates, provides greater stress resistance and improves both growth rates and aesthetic values of turf.

Circle No. 204 on Reader Inquiry Card

Barrier lotion protects skin from poison ivy

Trailside Poison Ivy Barrier protects the skin from exposure to poison ivy infection by forming an invisible non-greasy barrier film. Clinical results show that up to six hours of protection can be provided when used as directed prior to exposure. Lab test data show effective barrier action for as long as 15 hours.

The hydrophillic barrier lotion is the result of years of extensive laboratory and clinical testing.

Circle No. 205 on Reader Inquiry Card

New turf fungicide has wide control spectrum

Eagle WSP turf fungicide is expected to benefit golf course managers, who need a wide spectrum of disease control, coupled with excellent safety to all types of turf-grasses.

Eagle, which received an EPA registration last spring, is manufactured by Rohn & Haas. In tests, it provided consistent control of brown patch; dollar spot; leaf

spot; melting out and crown rot; leaf smuts; necrotic ring spot or spring dead spot; powdery mildew; red thread; rusts; Septoria leaf spot; summer patch and copper spot or zonate leaf spot.

The new systemic fungicide can be used as a protectant fungicide and also provides post-infection activity. Recommended rate is 0.6 oz./1000 sq. ft.

Circle No. 206 on Reader Inquiry Card

PRETTY AS A PICTURE



INTRODUCING AQUASHADOW

AQUASHADOW™ is a blended colorant formulation in convenient **WATER SOLUBLE PACKAGES** that highlights your water for a picture perfect landscape.

AQUASHADOW™
LAKE AND POND COLORANT

- Convenient no-mess application.
- Concentrated/one pack treats 326,000 gallons.
- Beautifying/tints water a stable blue color.

CUTRINE-PLUS
ALGAEICIDE / HERBICIDE

From **ab** Your trusted source of quality products for water quality.

AQUASHADE
POLYMER-BASED LAKE AND POND COLORANT

ab applied biochemists

A division of Great Lakes Biochemical Co., Inc.

6120 West Douglas Ave. • Milwaukee, WI 53218 • Dial 1-800-558-5106

Circle No. 105 on Reader Inquiry Card

Irrigation controller allows for system expansion in changing site conditions

The new XF-416 Controller from the Irrigation Division of The Toro Company allows commercial and large residential users to expand their irrigation systems as site demands change.

The flexibility is provided by advanced modular technology; four-station expansion modules upgrade the standard, eight-station controller to 12 or 16 stations as needed.

The controller is easy to program and

maintain, and features four, fully-independent irrigation programs that can be assigned to any station.

The Toro SurgePro system safeguards each module against lightning damage and power surges.

In addition, a built-in sensor port can be used with the Toro Rain Switch to prevent water waste by allowing automatic system shutdown.

Circle No. 207 on Reader Inquiry Card



Fungicide available as water-soluble packets

DowElanco announces the introduction of Rubigan 50WSP fungicide in water-soluble packets.

Rubigan 50WSP contains new Worker Protection Standard information, personal protective equipment specifications and per-acre rate specifications.

Each case of Rubigan 50 WSP contains four handy, non-tear pouches. Each pouch can be resealed and contains eight, pre-measured, water-soluble packets.

The water-soluble packaging ensures faster dissolve time and optimum tear strength of individual packets for easier use and applicator protection.

Rubigan 50WSP prevents and treats all major patch disease. It is the only fungicide on the market guaranteed to provide 80 percent control of summer patch, necrotic ring spot and Fusarium blight.

Rubigan 50WSP controls 14 difficult diseases, including dollar spot, anthracnose, snow mold and spring dead spot.

Circle No. 208 on Reader Inquiry Card

Service provides wind speed, humidity maps

Golf Communications, Inc. now provides subscribers with wind speed maps and humidity maps.

Three humidity maps are included in the kits. The first updates every three hours and includes a color display of humidity in 10 percent increments.

This package also includes two humidity forecast maps showing expected conditions for the next two forecast periods.

Forecast periods are at 6 a.m., 12 p.m.

and 6 p.m.

Weather Express wind maps include three different wind map displays.

The first map updates hourly and includes a color display of wind speeds plus arrows which depict wind direction.

Two wind forecast maps show expected conditions for the next two forecast periods.

Circle No. 209 on Reader Inquiry Card

Bermudagrass turf established from seed

Farmers Marketing released NuMex Sahara, the first turf-type bermudagrass from seed, in 1989.

In 1995, Farmers Marketing has released Princess bermudagrass, developed by the same plant breeder, Dr. Arden Baltensperger of New Mexico State University.

Princess is a very dark green color that compares favorably with the sterile hybrid bermudagrass varieties.

It is dense and very fine-textured compared to most bermudas, according to the company.

Princess seed will be available in limited quantities later this year.

Circle No. 210 on Reader Inquiry Card

Label expands control of indoor, outdoor pests

Thanks to a new, EPA-approved label, Ciba Turf & Ornamental Products' Citation can be used to control several damaging insects in most indoor and outdoor nursery settings.

Citation's new label includes control of Dipterous leafminers and fungus gnats in landscape ornamentals, container-grown

ornamentals, house-grown ornamental bedding plants and ornamental crops and interiorscapes.

Citation may also be used to control shore flies on greenhouse-grown ornamental crops and interiorscapes.

The previous label only included control recommendations for leafminers on container-grown chrysanthemums in greenhouses.

Citation's new label includes a number of the most popular landscape plants, including gerbera daisy, baby's breath, impatiens, marigold, poinsettia and verberna, among others.

Circle No. 211 on Reader Inquiry Card

Irrigation software for residential, commercial

Rain Bird's RainCAD-Lite is a new Irrigation & Landscape Design software program made for use by residential and light commercial design/build contractors and irrigation designers.

RainCAD Lite includes estimate and proposal functions, and performs a complete material takeoff.

Automated sprinkler placement can be diagrammed along a line or curve, or in square and triangular patterns.

An automated lateral line and main line pipe sizing and design enhancement tools such as total system flow calculations are included.

RainCAD Lite comes complete with more than 200 customized symbols for sprinklers and accessories plus choices for title blocks, north arrows, hatching patterns and line styles. An on-line tutorial and on-line help screens are included.

Circle No. 212 on Reader Inquiry Card

Midsize mowers powered by new V-twin engines

Two new Toro midsize models are built with state-of-the-art V-Twin 18 and 20 hp Kohler Command series overhead valve

engines.

The durable, high quality engines feature hydraulic valve lifters which keep the engines virtually maintenance free, according to Toro ProLine.

Stellite exhaust valve and cast-iron cylinders extend engine life.

Circle No. 213 on Reader Inquiry Card



Engine features electronic ignition

The Pro OHV engine from Robin America features electronic ignition, electronic low oil warning system, dual element air cleaner and convenient spark plug inspection window, all as standard equipment.

Cast iron cylinder liner, forged steel crankshaft and "two ball-bearing system design" are other durable features.

Circle No. 214 on Reader Inquiry Card

Wetting agents improve water infiltration

Aquatrols introduces a totally new wetting agent chemistry specifically developed to outperform all wetting agents applied through irrigation systems.

InfilTRx will improve the penetration and infiltration of water through thatch and into the soil.

InfilTRx will also enhance turf quality, and provide better aeration and drainage,

according to the company.

InfilTRx can be applied as a spray to supplement other water management programs.

InfilTRx is available in 55 gallon drums and five gallon containers.

Circle No. 215 on Reader Inquiry Card

Auto-feed feature new for brush chippers

Vermeer Manufacturing Company introduces the Auto Feed II for its disc-style brush chippers.

Designed to enhance Vermeer's disc-style chippers, the exclusive Auto Feed II system will be added to the 625, 935, 1230 and 1250 brush chippers.

The Auto Feed II system is geared toward making brush chipping more efficient and productive for commercial tree service firms, landscape contractors, lawn care operations, golf courses, municipalities and public works departments.

Circle No. 216 on Reader Inquiry Card

ADVERTISER INDEX

101 AgrEvo USA Co.	13G
102 AgrEvo USA Co.	19G
125 AgrEvo USA Co.	19G
103 AgrEvo USA Co.	7G
104 American Cyanamid ..	4G-5G
123 American Cyanamid ..	4L-5L
105 Applied Biochemists	35
111 Ciba Geigy	11G
Dow Elanco	Cv3
Dow Elanco	13
Dow Elanco	15
112 Fox Valley Systems	14
113 GMC Truck	6-7
114 John Deere	10L-11L
115 Lofts Seed	Cv4
116 Merck AgVet Division	5
106 Miles	9G
107 Miles	14L-15L
124 Miles	16G-17G
108 Miles	37
109 Miles	7L
110 Miles	10-11
117 Nextel Communications	33
118 Otterbine Barebo	21
119 Pennington Seed	17
120 Tee 2 Green	Cv2
121 Valent U.S.A.	3G
122 Wells Cargo	13L

This index is provided as an additional service. The publisher does not assume any liability for errors or omissions.