

## MISCELLANEOUS

## LANDSCAPING ROCK

## EDUCATIONAL OPPORTUNITIES



35'x60'x10'  
\$6,798

Build it yourself! Save \$\$\$!

• 5000 Sizes • All Steel

Call Today For Brochure and Price Quote

**HERITAGE BUILDING SYSTEMS**  
**800-643-5555**

Classified Advertising Pays...  
Make it Pay for YOU!

## LANDSCAPING ROCK

- Various Colors, Shapes and Sizes up to 4 tons
- 25.00 a ton picked up • 1 ton minimum

### BOYAS EXCAVATING

11311 ROCKSIDE ROAD VALLEY VIEW, OH 44125  
(216)-642-8800

The next ad closing for  
**LANDSCAPE MANAGEMENT** is  
**May 15, 1995 for the**  
**June 1995 issue.**

## CAREER TRAINING IN HORTICULTURE!

New York Botanical Garden offers a two year program of practical field work and academic classes in  
**BOTANY • HORTICULTURE • LANDSCAPE DESIGN**

Write or Call...

School of Professional Horticulture,  
New York Botanical Garden, Bronx, NY 10458  
(718) 817-8797

## Classified Advertising is

- **EASY**
- **EFFECTIVE**
- and
- **ECONOMICAL**

**LANDSCAPE  
MANAGEMENT**

# CLASSIFIEDS

For all ads under \$250, payment must be received by the classified closing date. We accept Visa, Mastercard & American Express. Credit card orders are accepted by phone. Send ad copy with payment to **Stephanie Stiggers-Smith, LANDSCAPE MANAGEMENT, 7500 Old Oak Blvd., Cleveland, OH 44130** or call **216-891-2719**. Fax Number 216-826-2865.

**BOX NUMBER REPLIES:** Mail box number replies to: **LANDSCAPE MANAGEMENT, Classified Ad Department, 131 W. 1st St., Duluth, MN 55802-2065**. Please include box number in address.

## BUSINESS FOR SALE

### ORGANIC TREE & SHRUB CARE BUS. FOR SALE

Profitable franchise in San Francisco Bay area.  
Strong name recognition. Grossing \$1.3MM.  
Turnkey operation. Substantial growth opportunity.  
Robert Gurrola 408-977-7860. Client#100346.

VERY REPUTABLE 16yr. ESTABLISHED CENTRAL N.J. COMMERCIAL LANDSCAPE COMPANY. MAINTENANCE, CONSTRUCTION, IRRIGATION & SNOW PLOWING ACCOUNTS WITH MULTI-YEAR CONTRACTS IN PLACE. 1.5 MIL. YEARLY AVERAGE GROSS. ONLY SERIOUS INQUIRES PLEASE. \$750,000 FAX INQUIRES TO 908-688-3231. 4/95

## FOR SALE

**BUCKET TRUCK:** Hi Ranger 65', 57', 50'. Skyworkers with chip boxes. Asplundh bucket trucks with chip boxes. Asplundh brush chippers. Bean 55 gal. sprayers. Pete Mainka Enterprises, 633 Cecilia Drive, Pewaukee, WI 53072. 800-597-8283. 12/95

FREE Catalog-Commercial Mower Parts. Walkbehinds-Riders. America's Largest Manufacturer and Distributor of Better Built Line of Parts and Equipment. Huge 130 Page Catalog-Call Today-Preco Distributors, 1-800-428-8004-USA, 1-800-421-3900-MA. Call 24 hrs. 4/95

## EDUCATIONAL OPPORTUNITIES

NOW...LEARN PROFESSIONAL LANDSCAPING AND GARDENING AT HOME! Accredited program provides thorough training in all phases of commercial and residential landscaping. Diploma awarded. Free brochure describes program and opportunities in detail. Call 1-800-326-9221 or write Lifetime Career Schools, Dept: LF0115, 101 Harrison Street, Archbald, PA 18403. 12/95

## EQUIPMENT FOR SALE

**PIPE LOCATOR INEXPENSIVE!** Locates, traces underground drain, water pipe lines of clay, PVC, ABS, steel, cement. Finds sprinklers, valves, clogs. Bloch and Company, Box 18058, Cleveland, Ohio 44118. (216)371-0979. TF

Tree/shrub Spray Tanker-600 gal. stainless steel, 400/200 split. Hannay elec. reels w/hose, all pumps & plumbing inc. tank mounted on full wrap around diamond plate bed w/step bumper. removed from Ford Super-duty truck. \$4,250.00, Bill Swann, 201-992-0598. 4/95

1991 Lesco 5 gang fairway mower model 500D S/N 500DD1353, with 3 cylinder Kubota Diesel, 8' cut, 600 hours, like new, \$8,750.00 or best offer. Phone 708-469-2285. 4/95

**SPYDERS-** New/Used/Rebuilt. Full line of replacement parts and update kits. Kubota, Ruggerini, and Kohler engines & parts. Nichols-Fairfield torque hubs. We repair and rebuild Spyder hydraulic pumps and motors. **FAST SERVICE.** Call or write: Mobile Lift Parts Inc., 5402 Edgewood Rd., Crystal Lake, IL 60012. (800)397-7509, FAX (815)455-7366. 12/95

**LAWN and/or TREE CARE TRUCK** 1987 Ford F-350, 6.9 1 Diesel, Manual trans, 450 gal. fiberglass tank, 2 hose reels, PTO driven Hydro-Call D-25. Capable of spraying both lawn and trees, \$6,000. Moyer Lawn Care (215)721-2810, ask for Bob Williamson. 4/95

Mail Blind Box Replies to:  
**LANDSCAPE MANAGEMENT**  
Classified Ad Department,  
131 W. First St., Duluth, MN 55802  
Please include box number in address!

**REINCO HYDROGRASSERS** and power mulchers in stock. Opdyke Inc., (Philadelphia Area) 215-721-4444. 1/95

**BUCKET TRUCKS:** Straight Stick, Corner Mount and Knuckle Boom Cranes. Brush Chippers: New Morbark Disc and Drum Style. New Rayco Stump grinders. Best prices anywhere. Used Chippers: Asplundh, Morbark, etc. 2 to 8 usually in stock. Sprayers, Dumps, Stakes, Log Loaders, Crew Cab Chip Box Dumps, Railroad Trucks, 50 in stock. Sold as-is or reconditioned. We also buy your surplus equipment. Opdyke's, Hatfield (Philadelphia Area). 215-721-4444. 1/95

## BUSINESS WANTED

Are you interested in selling your small to medium sized Lawn Care company? We can probably help! We are currently searching for lawn spraying companies throughout the United States and Canada. If you wish to discuss this possibility further please contact: **John Kloosterhuis**, 476 Evans Avenue, Etobicoke, Ontario Canada M9W 2T7, Phone: (416)253-6540 or Fax: (416)253-6891. 5/95

## HELP WANTED

**SUPERVISOR; GREENTREE, INC.** one of the South-east's leading landscape firms has outstanding opportunities for motivated leaders to supervise maintenance crews. **WE OFFER: 4 DAY WORK WEEK, TOP INDUSTRY SALARY, FULL BENEFIT PACKAGE, 401K PROGRAM, AND ADVANCEMENT OPPORTUNITIES.** Successful candidate will have exp. in landscape supervision, strong communication skills, Bi-lingual helpful, degree preferred. Apply to: Human Resources **GREENTREE, INC.**, 1640 Roadhaven Drive, Stone Mountain, GA 30083. Tele: 404-938-8080, Fax: 404-934-0919 EOE. 4/95

## HELP WANTED

**ATLANTIC PLANTSCAPES:** We are currently seeking key people to work interior and/or exterior departments. We offer competitive salary, excellent benefits and unlimited opportunities in our: Richmond, VA; Hampton Road (Virginia Beach), VA; and Research Triangle (Raleigh), NC offices. Please call, fax or mail us a resume. Atlantic Plantscapes, 1400B Nowell Rd., Raleigh, NC 26707. Phone 919-233-2930, Fax 919-233-2941. 5/95

Connecticut firm seeks working foreman with good experience in all phases of landscape construction and irrigation installation. A good knowledge of plants a must. Fax or mail resume to: BOMBACI LANDSCAPE, 45 Plains Rd., Essex, Ct. 06426, 203-767-8548. 4/95

**MAINTENANCE MANAGERS & SUPERVISORS:** One of the nation's largest and fastest growing full service landscape companies has an immediate need for experienced maintenance managers and superintendents, as well as entry level maintenance supervisors in the Midwest, Southwest, Mid-Atlantic, Northeast and Southeast states. The company seeks energetic, team oriented college graduates with proven leadership, communication and interpersonal skills. The company offers full-time positions, excellent advancement opportunities and exceptional compensation and benefits with an industry leader celebrating more than 50 years of uncompromising customer service. For immediate confidential consideration, please send or fax your resume to: The Brickman Group, Ltd., Corporate Office, 375 S. Flowers Mill Road, Langhorne, PA 19047, 215-757-9630, EOE 3/95

**LANDSCAPE CONSTRUCTION SALESPERSON** One of the largest, top quality landscape contracting companies in the Southeastern PA and NJ areas is seeking salesperson with 3-5 years landscape construction sales and estimating experience. Excellent working atmosphere for career minded individuals. Send or fax resume and salary history to Personnel Dept., Pennink Arrimour, Inc., 1965 Byberry Rd., Huntingdon Valley, PA 19006, fax (215)659-9317, EOE. 4/95

**NURSERY MANAGER & CREW SUPERVISORS** Renfro Landscape Company Inc., a successful Design/Build firm and established leader serving Southwest Florida for over 25 years is seeking a Horticultural Graduate to train in nursery management. Opening are also available for experienced Landscape Crew Foreman. Competitive wages are enhanced with health benefits & profit sharing. Affordable company housing may be available. Naples is located on the southwest coast of Florida and offers a mild climate, excellent recreational opportunities & schools. Send resume to: Renfro Landscape Company, 1076 Goodlette Rd., Naples, FL 33999. Phone (813)262-4102 Fax (813)262-0161. 4/95

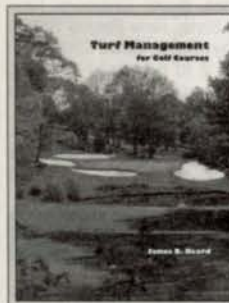
**OPERATIONS MANAGER:** Hermes Landscaping has an immediate opening for an individual to oversee the installation of landscaping and sprinkler systems on large commercial projects. Candidates should have supervisory experience and related background. Bachelors degree preferred. Sal. range 25k-35k + benefits. Hermes has been providing quality service for 30 years and we currently have a lot of contracts to fulfill. Come join our team. Send resume to: Hermes Landscaping, P.O. Box 14336, Lenexa, KS 66215. (913)888-2400 EOE. 4/95

**GROUNDS MANAGEMENT SALES:** Career position with established 88 year old quality building services company. NY, NJ, PA areas. Background in sales to corporate clientele. Strong motivation, proven sales experience. Must be articulate, organized, aggressive. Duties: prospecting, estimating, sales. Send resume. CONTROL SERVICES, 737 New Durham Rd, Edison, NJ 08817. Fax (908)548-4359. 5/95

**VIRGINIA TURFGRASS FARM/PRODUCTION SUPERVISOR POSITION** Career-oriented individual with 3-5 years work experience in managing turfgrass production with knowledge of both warm season and cool season grasses. Turf management degree is desired, but not mandatory. Experienced in business management and "on-hands" production basics essential. This position requires the individual to be willing, able and result-oriented necessary to the planning and leading of the operation. Salary commensurate to experience. Benefits include 100% paid medical insurance and paid vacation leave. For more information, contact J. L. Kidwell (804)689-2863. 4/95

**LANDSCAPE SALES MANAGER** Menne Nursery has a unique opportunity for an experienced individual to develop and run our residential and commercial landscape division. Other duties would include hiring, training, designing and selling. Must have management as well as landscape design/sales experience. The position is full time and offers exceptional compensation and benefits with an industry leader in the Buffalo area celebrating 56 years of uncompromising customer service. Send resume to: Menne Nursery Corporation, 3100 Niagara Falls Blvd., Amherst, NY 14228, ATT: Gary Sokolowski. 3/95

# LANDSCAPE MANAGEMENT BOOKSTORE



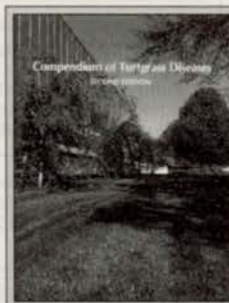
## Turf Management for Golf Courses

by James Beard

642 pages, hardcover

LSM-BK-615

\$77.00



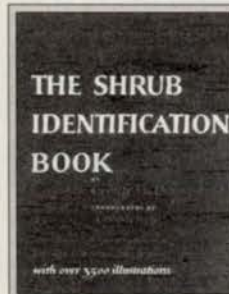
## Compendium of Turfgrass Diseases

by Richard Smiley, Peter Dernoeden & Bruce Clark

128 pages, softcover

LSM-BK-650

\$30.00



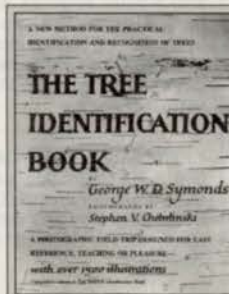
## The Shrub Identification Book

by George Symonds

379 pages, softcover

LSM-BK-720

\$19.50



## The Tree Identification Book

by George Symonds

272 pages, softcover

LSM-BK-750

\$17.50

# Call 1-800-598-6008

Outside the U.S. call 216-826-2839

Advanstar Marketing Services • 7500 Old Oak Blvd. • Cleveland, OH 44130