

JOB TALK

Unused space beautified in 14 days

Creative landscaping can transform any space—even an abandoned loading dock—into a pleasing environment.

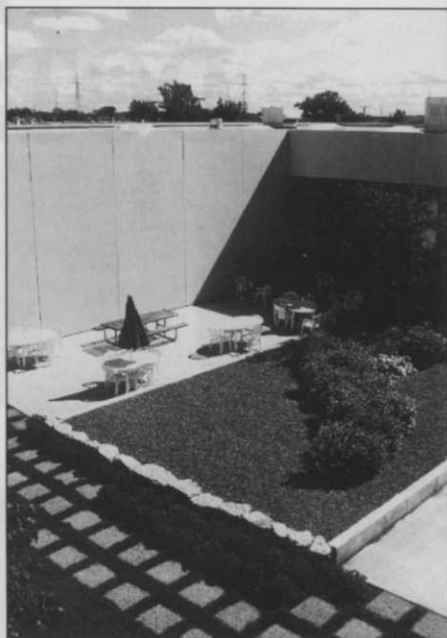
■ Tandem Landscape Company of West Chicago, Illinois, was recently given an Associated Landscape Contractors of America (ALCA) distinction award for its renovation project at Narco Elmhurst Centre in Elmhurst, Ill. But considering the project, the award could be renamed, 'Working miracles on short notice.'

The project developer, Nardi Group, Ltd., had awarded Tandem the design/build contract. Shortly thereafter, Tandem had to respond to an emergency renovation request to meet the needs of a prospective corporate tenant.

Nardi asked Tandem to transform the building's sterile,

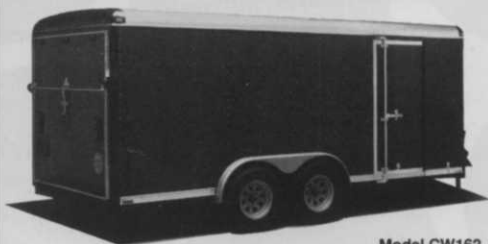
asphalt loading dock area between two, U-shaped buildings into a lush, landscaped courtyard and patio, which would be an acceptable amenity for the tenant. The renovation was part of a total project by the developer to connect the two buildings before the new tenant's move-in date. To meet that schedule, the construction pace was brisk and the landscaping had to be completed in only two weeks.

The renovated



The transformed loading dock includes four individual seating areas. Each seating area is separated by greenery and planter sections.

A NEW "MACHINE"...



Model CW162

...JUST FOR LAWN & LANDSCAPE MACHINES

Transport and store all your equipment with complete security. Protected from the weather. Great Options like: FLOW-THRU VENTILATION eliminates fuel fumes. WOLMANIZED 1 1/2" floors and 3/4" interior side walls for "guts". WIDE BODY, too. Hundreds of Models, Sizes and other Customizing Options. All backed by an EXCLUSIVE 3 YR. WARRANTY PROGRAM. Give us a call, today.

Tell Us You Saw It In LANDSCAPE MANAGEMENT

1-800-348-7553 for Catalogs-Prices
Factory Service points: GA, IN, TX, UT.
Nationwide Dealer Network.

P.O. Box 728-1069, Elkhart, IN 46515-0728

With a Wells Cargo Behind... You Never Look Back!

WELLS CARGO



Circle No. 149 on Reader Inquiry Card



Tandem's design incorporated abundant greenery and bright clusters of seasonal flowers, combining both summer and winter colors.

courtyard landscaping included four individual patio areas, stone walkways, trees and shrubs, annual flower beds and a complete irrigation system. The 22,000 square-foot courtyard acquired the ambiance of a small park.

"We are quite proud of this project," says Mark Sorrentino, Tandem president.

"With the timing complications aside," says Sorrentino, "the new courtyard became a beautiful and unique focal point for the office building. Combine that with the short two-week construction time, and we felt confident this project was of award-winning quality. Of course, the highest honor for us was being awarded the long-term maintenance contract for the tenant..."