

HOT TOPICS

Pesticide critic a hot item on winter turf programs

WASHINGTON—Jay Feldman says many professional pesticide users focus on profits and expediency, and disregard customer safety.

He also says the U.S. Environmental Protection Agency's pesticide registration mechanism is a hopeless failure. Hardly any of the pesticides being used on turf have been adequately tested for their long-term health affects, he claims.

Feldman is the keynote speaker at the Rocky Mountain Turf Conference in Denver on Wednesday, Dec. 4. On Friday, Feb. 14, 1992, he speaks about urban pesticide use at the International Golf Course Conference in New Orleans.

This is a far cry from when only the representatives of industry or industry trade groups pow-wowed (usually discreetly and to little purpose) with Feldman over his unending criticism of the pesticide industry.

Feldman is national director of the National Coalition Against the Misuse of Pesticides (NCAMP), an advocacy group that works out of modest offices in a residential neighborhood of Washington D.C. Since NCAMP's founding in 1981, Feldman has built himself into an outspoken and accessible—at least to the capital's media and politicians—critic of pesticide use.

This past spring, before a U.S. Senate subcommittee, Feldman ripped the specialty chemical industry, attacking everything from pesticide safety testing protocols to the U.S. EPA registration process, to the health hazards of actual applications.

Although Feldman's efforts in Washington D.C. reap him a surprisingly large soapbox, it's his and NCAMP's spiderweb of activist contacts in communities across the country, and the possibility that



Feldman: will his message be welcome?

they might become a spark for a rash of local regulatory brushfires, that most concerns industry.

Feldman, through these supporters, has been pushing for more local control over pesticide use laws. In light of a U.S. Supreme Court ruling this past June and some recent

"how-to" information from NCAMP, it's likely a lot of town councils will be debating the pros and cons of pesticide use this winter and spring.

Although some industry spokespeople question Feldman's appropriateness as a "keynote speaker" at a turf conference, even a regional one, they concede that he's somebody they'd now better, at least, pay attention to.

USGA looks at guidelines for sand analysis

FAR HILLS, N.J.—The United States Golf Association's Green Section is considering guidelines that include organic analysis of sand for golf course greens construction.

"We're investigating that right now," says Green Section executive director Jim Snow. "Dr. Norm Hummel from Cornell University is on sabbatical, working with us to standardize lab procedures.

"We all agree that it's something that needs to be addressed. But it's not that easy to address."

Mark Altman of Altman & Altman Consulting, Marshall, Minn., says he's seen real problems on greens which arise from the organic analysis of their sand content.

"The sand makes a lot of difference in



Mark Altman



Jim Snow

the green's performance," he says. "Carbon-to-nitrogen ratio is the most important thing in evaluating organic matter."

Altman, whose company specializes in golf course and athletic turf management,

says the sand's organic content affects turf health via percolation rate, cation exchange and water-holding capacity.

"I'd like the Green Section to take the science of greens management one step further," Altman says. "The USGA doesn't have to endorse a product, just give superintendents guidelines so they can make an intelligent decision."

Snow says there is "no doubt" the Green Section will come up with guidelines for superintendents. "We might try to rank—in general terms—the sorts of organic amendments," he says. "We'll have a certain set of parameters to put in our specifications for greens construction."

ELSEWHERE

Revised seed chart, page 36

NFL Famer at GCSAA, page 38

Defining the word quality, page 38

Seed availability for 1992 is re-examined

CLEVELAND—Because of a production error, incorrect seed charts appeared in the October issue of *LANDSCAPE MANAGEMENT*.

On this and the next two pages appear complete, updated charts. The magazine apologizes for any inconveniences.

SEED AVAILABILITY ESTIMATES, 1991-92

The following information is based on surveys conducted in July-August, 1991. Supply and price estimates may have changed since publication.
(A=Surplus/B=Adequate/C=Limited)

BENTGRASS

Variety	Marketer	Supply	Price
Carmen	Vanderhave	B	Stable
Cobra	International Seeds	A	Stable
Dominant blend**	Seed Research	B	Stable
Emerald	International Seeds	A	Stable
Exeter (colonial)	Pickseed West	C	Stable
National	Pickseed West	B	Stable
Penncross	Lesco/Northrup King/ Tee-2-Green/Roberts Seed	B/A/B/B	Stable
Penneagle	Lesco/Northrup King/ Tee-2-Green	B/A/B	Stable
Pennlinks	Lesco/Northrup King/ Tee-2-Green	B/A/B	Stable
Pennway	Lesco/Tee-2-Green	B/B	Stable
Prominent	Seed Research	C	Stable
Providence	Seed Research	B	Stable
Putter	Jacklin Seed Co.	B	Lower
Reston (red top)	Pickseed West	B	Lower
SR 1020	Seed Research	B	Stable
Southshore**	Lofts Seed, Inc.	C	Stable
Tracenta	Vanderhave	B	Stable
V.I.P. blend	Turf Merchants	B	Stable to Lower

KENTUCKY BLUEGRASS

Abbey	O.M. Scott	A	Stable
Adelphi	J&L Adikes/Northrup King/ Jacklin Seed Co.	B/A/B	Stable
Alpine	Pickseed West	n/a	n/a
American	Pickseed West	C	Higher
Amazon	Jacklin Seed Co.	C	Stable
Argyle	Roberts Seed Co.	B	Stable
Aspen	Northrup King	A	Stable
Aquila	Northrup King	C	Stable
Banff	Pickseed West	B	Stable
Baron	Lofts Seed Inc.	B	Lower
Blacksburg	Turf Seed, Inc.	C	Higher
Bristol	O.M. Scott	C	Stable
Bronco	Pickseed West	B	Stable
Challenger	Turf Seed, Inc.	B	Stable
Chateau	Fine Lawn Research, Inc.	B	Lower
Classic	Jacklin/Peterson	B	Lower
Crest**	Pickseed West	B	Stable
Columbia	Turf Seed, Inc.	B	Stable
Coventry	O.M. Scott	C	Stable
Dawn	Lesco	B	Stable
Eclipse	Jacklin Peterson Zajac	B B C	Stable Lower Lower
Emerald	International Seeds, Inc.	A	Stable
Estate	Roberts Seed Co.	B	Stable
Freedom	Northrup King	A	Stable
4 Aces**	Turf Seed, Inc.	C	Stable
Fylking	Jacklin Seed Co.	B	Stable
Georgetown	Lofts Seed, Inc.	B	Lower
Glade	Jacklin Seed Co.	B	Stable
Haga	Burlingham	C	Stable
Harmony	Seed Research	C	Lower
Huntsville	Jacklin Seed Co.	B	Stable
Indigo**	Pickseed West	C	Higher
ISI 1034**	International Seeds, Inc.	C	Stable
Julia	Lesco	B	Stable
Kelly	Northrup King	A	Stable
Kenblue	Jacklin Seed Co.	B	Stable
Liberty	Zajac	B	Lower
Marquis	Roberts Seed Co	B	Stable

KENTUCKY BLUEGRASS (cont.)

Variety	Marketer	Supply	Price
Merion	Jacklin Seed Co.	B	Stable
Mystic	Lofts Seed, Inc.	C	Stable
Nassau	Lofts/Jacklin	B	Lower
Newport	Jacklin Seed Co.	B	Stable
Nugget	Pickseed West	n/a	n/a
Nu Star**	Jacklin Seed Co.	C	n/a
Park	Jacklin Seed Co.	B	Stable
Princeton 104	Lofts Seed Inc.	C	Stable
Ram 1	Lofts/Jacklin	C/B	Stable
Rugby	Northrup King Roberts Seed Co.	B/B	Stable
S-21	Jacklin Seed Co.	B	Stable
SR 2000**	Seed Research	C	Stable
SR 2100**	Seed Research	C	Stable
1757	Lofts Seed, Inc.	C	Stable
Shamrock**	Lesco	C	Stable
Suffolk	Lofts/Jacklin	B	Stable
Touchdown	Pickseed West	B	Stable
Trenton	Northrup King	A	Stable
Victa	O.M. Scott	B	Stable
Welcome	Seed Research	B	Lower

TURF-TYPE TALL FESCUE

Advent**	Jacklin Seed Co.	B	Stable
All*Star	Jacklin Seed Co.	B	Lower
Amigo	Northrup King	B	Lower
Arid	Jacklin/Northrup King	B/B	Lower
APM**	Jacklin Seed Co.	C	n/a
Apache	Turf Seed, Inc.	A	Lower
Aquara	O.M. Scott	B	Lower
Arriba**	Northrup King	B	Lower
Bonanza	Proprietary Seeds	A	Lower
Bonzai (dwarf)	Turf Merchants	B	Lower
Brahma	Roberts Seed Co.	B	Lower
Chesapeake	O.M. Scott	A	Lower
Chieftain	Roberts Seed Co.	B	Lower
Cimarron	Lesco	B	Stable
Confederate**	Turf Seed, Inc.	C	Stable
Crew-Cut (dwarf)	Proprietary Seeds	B	Lower
Crossfire	Pickseed West	B	Lower
Eldorado	Turf Seed, Inc.	B	Lower
Emperor	Zajac	B	Lower
Era**	International Seeds, Inc.	A	Stable
Falcon	Burlingham	B	Lower
Finelawn SGL	Fine Lawn Research	B	Lower
Finelawn 1	Fine Lawn Research	B	Lower
Finelawn Petite**	Fine Lawn Research	C	Stable
Gala**	International Seeds, Inc.	A	Stable
Galway	Northrup King	B	Lower
Guardian	Roberts Seed Co.	B	Lower
Hounddog	International Seeds, Inc.	A	Stable
Jaguar	Zajac	B	Lower
Jaguar II	Zajac	B	Lower
Lancer**	Lesco	B	Stable
Leprechaun**	Roberts Seed Co.	C	Lower
Maverick II	Pickseed West	B	Lower
Maverick blend	Roberts Seed Co.	B	Lower
Mesa	Jacklin Seed Co.	B	Stable
Micro**	Turf Merchants	B	Lower
Mini-Mustang	Pickseed West	B	Lower
Monarch	Turf Seed, Inc.	B	Lower
Mow-Less**	Turf Seed, Inc.	C	Stable
Murietta	Turf Seed, Inc.	B	Lower
Mustang	Pickseed West	B	Lower
MX-86	Jacklin Seed Co.	C	Higher
Olympic	Turf Seed, Inc.	B	Lower
Olympic II	Turf Seed, Inc.	B	Lower
Pacer	International Seeds, Inc.	A	Stable
Pixie**	Jacklin Seed Co.	C	n/a
Rebel	Lofts Seed, Inc.	C	Lower
Rebel II	Lofts Seed, Inc.	B	Lower
Rebel Jr.	Lofts Seed, Inc.	B	Lower
Rebel 3D**	Lofts Seed, Inc.	C	n/a
Recycler**	Turf Merchants	C	Lower
SR 8200**	Seed Research	C	Lower
SR 8300**	Seed Research	C	Lower
Safari**	Turf Seed, Inc.	C	Lower
Sapphire**	Vanderhave	A	n/a
Shenandoah**	Willamette	B	Lower
Shortstop	Pickseed West	B	Lower
Silverado	Turf Seed, Inc.	B	Lower
Sundance (dwarf)	Turf Merchants	C	Lower
Survivor blend*	Seed Research	B	Lower
Taurus (dwarf)**	Turf Merchants	C	Lower
Thoroughbred	Pickseed West	B	Lower
Thunderbird**	Burlingham	C	Lower
Titan*	Seed Research	B	Lower
Tomahawk	Turf Seed, Inc.	C	Lower
Trailblazer II**	Lesco	B	Stable
Tribute	Lofts Seed, Inc.	B	Lower
Trident*	Seed Research	B	Lower
Triathalawn	Turf Seed, Inc.	B	Lower

TURF-TYPE TALL FESCUE (cont.)

Variety	Marketer	Supply	Price
Trophy blend*	Seed Research	B	Lower
Turf Gem	Turf Merchants	B	Lower
Turf Gem Jr.	Turf Merchants	B	Lower
Twilight (dwarf)	Turf Merchants	B	Lower
Willamette	Willamette	A	Lower
Winchester**	Burlingham	B	Lower
Wrangler	Jacklin/Lesco/TMI	B/B/B	L/S/L

FINE FESCUE

Variety	Marketer	Supply	Price
Azay (sheep)	Pickseed West	C	Stable
Cindy	International Seeds, Inc.	A	Stable
Dawson	Northrup King/ Vanderhave	B/B	Stable
Estacada	Turf Merchants	C	Stable
Flyer	Fine Lawn Research	B	Lower
Fortress cr'ping**	Tee-2-Green	C	Stable
Hector**	Vanderhave	B	Stable
Herald	International Seeds, Inc.	A	Stable
Revere creeping**	Northrup King	B	Stable
Ruby creeping	Northrup King	A	Lower
Shademaster	Lesco	B	Stable
Silvestor	Vanderhave	C	Stable
Virtus	Turf Merchants	B	Stable
Vista creeping**	Zajac	B	Stable

CHEWINGS FESCUE

Variety	Marketer	Supply	Price
Agram	Pickseed West	B	Stable
Atlanta	Vander Have	A	Stable
Banner	O.M.Scott	B	Stable
Camaro**	Fine Lawn Research	C	Stable
Center	Turf Merchants	B	Stable
Dover**	Northrup King	B	Stable
Enjoy	International Seeds, Inc.	A	Stable
Jamestown	Lofts Seed, Inc.	B	Lower
Jamestown II **	Lofts Seed Inc.	B	n/a
Koket	Burlingham	B	Stable
Longfellow	International Seeds, Inc.	A	Stable
Mary	Vanderhave	B	Stable
Molinda	Vanderhave	A	Stable
SR 5000*	Seed Research	B	Stable
SR 5100* **	Seed Research	C	Stable
Shadow	Lesco	B	Stable
Victory	Pickseed West	B	Stable
Waldorf	Vanderhave	A	Stable
Wilma	Burlingham	B	Stable

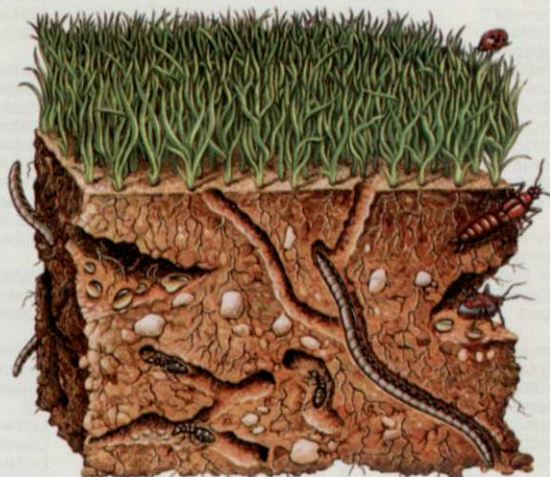
HARD FESCUE

Variety	Marketer	Supply	Price
Attila	Turf Merchants	C	Stable
Aurora	Turf Seed, Inc.	B	Stable
Aurora* **	Turf Seed, Inc.	C	Stable
Biljart	Vanderhave	C	Stable
Eureka**	Fine Lawn/Int. Seeds	C/A	Stable
HF 9032**	Northrup King	C	Stable
Reliant* **	Lofts Seed, Inc.	B	Stable
Scaldis	Vanderhave	C	Stable
Silvana	Vanderhave	A	Stable
SR 3000*	Seed Research	B	Stable
SR 3100* **	Seed Research	C	Stable
Scaldis	Northrup King	B	Stable
Spartan	Lesco/Pickseed	B/C	Stable
Tournament	Pickseed West	C	Stable
Valda	International Seeds, Inc.	A	Stable
Waldina	Vanderhave	C	Stable

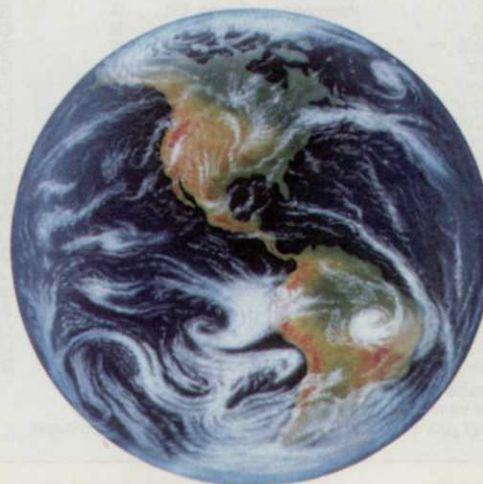
PERENNIAL RYEGRASS

Variety	Marketer	Supply	Price
Accolade	O.M. Scott	C	Lower
Allaire**	Turf Merchants	B	Stable
Alliance blend	Turf Seed, Inc.	B	Lower
All*Star	J&L Adikes/ Northrup King	B	Lower
Aquarius	Turf Merchants	C	Stable
Assure	Lesco	B	Stable
Birdie II	Turf Seed, Inc.	C	Lower
Blazer II	Pickseed West	B	Stable
Brenda	Vanderhave	A	Lower
CBS blend	Turf Seed, Inc.	B	Lower
Caddie	Northrup King	C	Stable
Caliente	Willamette	A	Lower
Calypso	Roberts Seed Co.	B	Stable
Caravelle	O.M. Scott	B	Stable
Champion*	Seed Research	B	Lower
Charger	Turf Seed, Inc.	B	Lower
Citation II	Turf Seed, Inc.	A	Lower
Competitor**	Burlingham	B	Lower
Cowboy	Lofts Seed Inc.	B	Lower
Cutless**	International Seeds, Inc.	B	Stable
Dandy	Northrup King	B	Stable

WHY OUR FERTILIZERS ARE GOOD FOR THIS SYSTEM...



THIS SYSTEM...



AND YOUR IMAGE, TOO.

Your decision to use Harmony fertilizers shows your knowledge of good turf and soil management, along with respect for the environment.

High organic content feeds turf as well as the soil it depends on for vigorous growth.

With slow-release action and an extremely low salt index, Harmony fertilizers are extra gentle to turf and to the environment.

Take a more natural approach to turf care with highly effective, organic base fertilizers from Harmony.



Call or write for details.

Harmony Products, Inc., 2121 Old Greenbrier Road
Chesapeake, VA 23320 (804) 523-2849

Circle No. 102 on Reader Inquiry Card

PERENNIAL RYEGRASS (cont.)

Variety	Marketer	Supply	Price
Derby	International Seeds, Inc.	A	Stable
Derby Supreme**	International Seeds, Inc.	A	Stable
Dimension	Vanderhave	A	Lower
Edge**	Pickseed West	C	Stable
Envy**	Zajac	B	Stable
Express**	Pickseed West	C	Stable
Fiesta II	Pickseed West	B	Stable
F.puccinellia	Northrup King	B	
StableGator	International Seeds, Inc.	A	Stable
Goalie	Northrup King	B	Stable
Jazz	Pickseed West	B	Stable
Legacy**	Lesco	B	Stable
Lindsay	International Seeds, Inc.	B	Stable
Lowgrow	Pickseed West	C	Stable
Loretta	O.M. Scott	B	Stable
Manhattan II	Turf Seed, Inc./TMI.	B/C	Lower/ Stable
Manhattan II* **	Turf Seed, Inc./TMI	C/B	Stable
Mondial	Vanderhave		
NK 89001**	Northrup King	C	Stable
Nomad**	Turf Merchants	C	Lower
Nova	Seed Research/ Vanderhave	B/A	Lower
Omega II	Zajac	B	Stable
Ovation	O.M. Scott	C	Lower
Palmer	Lofts Seed, Inc.	B	Lower
Palmer II* **	Lofts Seed, Inc.	C	n/a
Patriot II**	Turf Merchants	C	Lower
Pebble Beach*	Fine Lawn Research	B	Lower
Pennant	Burlingham	B	Lower
Playmate blend	Roberts Seed Co.	B	Stable
Prelude	Lofts Seed, Inc.	B	Lower
Prelude II* **	Lofts Seed, Inc.	C	n/a
Quickstart**	Turf Seed, Inc.	B	Lower
Ranger	Vanderhave	A	Lower
Regal	International Seeds, Inc.	A	Stable
Repell	Lofts Seed, Inc.	B	Lower
Repell II* **	Lofts Seed, Inc.	C	Stable
Riviera	Roberts Seed Co.	B	Stable
Rodeo**	Turf Merchants	B	Lower
Rodeo II**	Turf Merchants	C	Lower
SR 4000*	Seed Research	B	Lower
SR 4100*	Seed Research	B	Lower
SR 4200*	Seed Research	B	Lower
SR 4300*	Seed Research	C	Lower
Satum	Zajac	B	Stable
Seville	Willamette	B	Lower
Stallion *	Fine Lawn Research/ TMI	B	Lower/ Stable
Sunrye 246	Turf Seed, Inc.	B	Lower
Target	Northrup King	B	Stable
Troubadour	International Seeds, Inc.	B	Stable
Vantage	Proprietary Seeds	B	Lower
V.I.P. blend	Turf Merchants	B	Lower
Yorktown III* **	Lofts Seed, Inc.	C	Stable

*Contains endophytes

**New variety

***Final year of production. To be replaced by Shademaster.

Irrigation tubing analysis is free to green industry

DANBURY, Conn.—Union Carbide Chemicals and Plastics Co. invites landscapers and golf superintendents to get a free irrigation tubing analysis.

Landscape professionals can send a two-foot sample of the irrigation tubing they are using to verify the tubing's quality and components.

Until now, the green industry could not be certain that the irrigation tubing they purchased was manufactured from high-quality resins, Union Carbide points out.

The company's Fingerprint

Program has introduced a trace element into its mixing bins which identifies top-quality resins in its products.

The Fingerprint Program analysis provides a quality check that identifies ingredients and tells whether the tubing's carbon black is spread uniformly to prevent leaks and premature aging.

Landscapers and superintendents should contact: Union Carbide, Dept. QA, Bldg. 561, P.O. Box 186, Port Lavaca, TX 77979. There is no charge for this service.

Rogers, Bradshaw to highlight annual GCSAA extravaganza

LAWRENCE, Kans.—Record-breaking attendance is expected at the 63rd International Golf Course Conference and Trade Show, Feb. 10-17 in New Orleans, La.

According to the Golf Course Superintendents Association of America (GCSAA), last year's conference and show in Las Vegas drew more than 16,400 people, including many foreign visitors.

Features of the 1992 show are 60 educational sessions and seminars, a three-day trade show, a gala banquet with a

performance by country musician Kenny Rogers, and a keynote speech by National Football League Hall-of-Famer Terry Bradshaw.

Nearly 600 manufacturers and distributors of products, supplies and services are expected to exhibit at the trade show Feb. 15-17 in the New Orleans Convention Center.

For more information on attending or exhibiting, write the GCSAA at 1421 Research Park Drive, Lawrence, KS 66049; or phone (913) 841-2240.

Quality is defined as 'process' to an end—not the end

SUSSEX, Wisc.—"Quality" is not the end result of a landscaping job, but rather a process that ultimately reflects a quality end result.

This definition comes from the most recent meeting of the Associated Landscape Contractors of America's Crystal Ball Committee.

Fifteen of the landscape industry's movers and shakers met here to issue this definition of quality:

"The process of continuous improvement of a product, service or organization that meets the requirements of the customer and ultimately exceeds their expectations."

Thus, quality, according to the committee, was defined not as "curb appeal," but as a business philosophy that is carried out in every aspect of a company. The highest quality companies, the committee decided, have a customer-focused management whereby they careful-

ly guard and improve each step of meeting a client's wishes.

"You not only deliver a quality product, but each step of the way within your company, as you produce the product or service, is quality. You carefully control each of the processes that lead to the end result," says committee chairman Tom Lied. "You are improving a bit at a time in each step of the process and always focusing on the customer. So that as soon as you create a new plateau of effectiveness in a particular process, you immediately begin to look for another way to do it a little bit better."

Two Crystal Ball Committee reports on quality are available this month from the ALCA office. Both reports will also be discussed in depth at ALCA's Executive Forum in Naples, Fla. Jan. 26-29, 1992.

For more information, phone ALCA at (703) 241-4004.