

PRODUCTS

Introducing two new vertical shaft engines

Teledyne Total Power now markets two new vertical shaft models of the Wisconsin Robin Sovereign engine series.

The WO1-170V is a single-cylinder, 5.5 hp engine that operates at 3600 rpm.

The WO2-560V is a twin-cylinder, 18-hp engine, that also operates at 3600 rpm.

The new models bring to 12 the number of engines available in the Sovereign Series.

Included in the series are seven horizontal shaft models with 4 to 18 hp. Five vertical shaft models have horsepower of 5.5 to 18. Every Sovereign model offers easy, dependable starting. Compact size and light weight, smooth, quiet operation, and long service life.

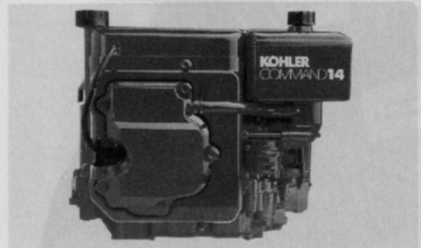
Teledyne Total Power says its engine models fit a wide range of lawn and garden equipment applications. **Circle No. 191 on Reader Inquiry Card**

New, 14-hp engine most powerful overhead

Kohler's new Command 14-hp engine is one of four models in this innovative line of vertical and horizontal shaft engines.

The most powerful model in Kohler's overhead valve engine series, the Command 14 is conservatively rated at 14 hp gross.

Features include Kohler's exclusive hydraulic valve lifter, high



torque at low rpm, a mechanical governor to maintain constant rpm, and a computer-designed balanced shaft which reduces first order forces while inhibiting engine vibration.

Circle No. 192 on Reader Inquiry Card

New shovel maneuvers well in tight spaces

Kobelco America, Inc. has introduced the Super Shovel, model SS-60, which it says is the first machine of its kind to enter the American market.

Small enough to pass through a

standard door frame and capable of digging to a depth of 3'4", the SS-60 was specifically designed to work in confined spaces and around obstacles.

The SS-60 is mounted on crawler treads, and powered by a 3.5-hp Ka-



wasaki engine with 12.3-cubic inch displacement.

Its compact dimensions, safety and ease of operation make it ideal for landscaping projects such as irrigation, ditch digging, flowerbed maintenance, and water features excavation.

Circle No. 193 on Reader Inquiry Card

Information manuals cover green industry

Nilsson Associates, green industry consultants based in Southington, Conn., has published an extensive business information reference library designed and written specifically for the green industry.

The management guides are the end result of over 20 years of experience and research in green industry contracting, management, accounting, marketing and sales.

These how-to management guides zero in on profit improvement, contract costing, sales, finance, operations and virtually every aspect of green industry business management. **Circle No. 194 on Reader Inquiry Card**

Business management easy with intelligence software

A new artificial intelligence software package for microcomputers is making it easier for landscapers to manage their businesses.

The new software, called the Management Information Query System, is from the Datasphere Division of Doane Information Services. It is an English language interface for Datasphere's Terra System.

The query system allows landscapers to search the many files and data bases kept by the Terra System and produce custom-designed reports.

For example, a landscaper could find out about all jobs performed by a certain individual or analyze the effect of a percentage increase in labor or material on the profitability of a job.

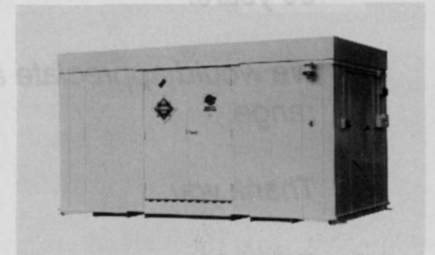
MIQS and the Terra System operate on MS-DOS microcomputers as well as multi-user networks. The software permits reports to be designed graphically on the computer screen. **Circle No. 195 on Reader Inquiry Card**

Storage building provides safe chemical storage

Safety Storage, Inc. of Campbell, Calif. announces the availability of its new, fire-rated model FR-30 storage building, designed to provide a prefabricated, relocatable structure for safe storage of hazardous liquids and other flammable materials.

FR-30 offers two-hour fire-rated walls extending to ground level, two-hour, fire-rated roof and ceiling and 1 1/2-hour fire-rated doors.

Building walls are constructed of layers of 18-gauge sheet steel and double-thick fire-rated gypsum boards separated by heavy-duty steel studs incorporated within a 3 1/2-inch air space. All materials are corrosion protected and interior surfaces are coated with chemical-resistant epoxy paint.



Circle No. 196 on Reader Inquiry Card

New transmission feature for more productivity

A 12x12-speed shuttle shift transmission for Models 1720 and 1920 Ford compact diesel tractors boosts productivity in loader and landscape work.

Available as an option to the standard 12x4 transmission, the 12x12 shuttle is synchronized for smooth, easy shifting.

With the shuttle, the operator can shift without coming to a complete stop, "feather" to the opposite direction and also change speed on the go.

As a result, cycle time is shortened for loading and other work that requires frequent direction change.

Circle No. 197 on Reader Inquiry Card

continued on page 70

Walk-behind mower for commercial users

The W5021-PCC walk-behind mower is the newest addition to Kubota Tractor's commercial turf maintenance line.

The mower is equipped with a 5-hp, 8.91-cubic inch overhead valve engine that delivers high torque at low speeds, so it easily handles a variety of terrains. With long-lasting components like cast-iron cylinder sleeves, cast-iron flywheel and ball-bearing supported crankshaft, the mower is designed with built-in durability.

The large capacity fuel tank minimizes the need for refueling. High-suction turbo fan produces Turbo-Suction, inhaling grass, leaves and twigs, and sweeping up debris and leaving behind nothing but a well-maintained lawn.

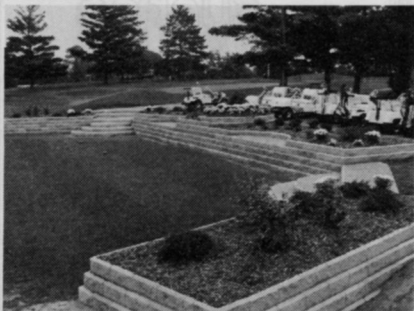
Circle No. 201 on Reader Inquiry Card

Retaining wall system used by many sectors

The landscape, golf and roadside maintenance industries can benefit from the many applications of mortarless Allan Block concrete retaining wall system.

"We've seen an immediate acceptance of Allan Block for many different applications—residential and commercial landscaping, roadway construction and golf course design," says Robert Gravier, product designer and president of Allan Block Corp., located in Minneapolis.

Allan Block is a patented landscape retaining wall system which does not require mortar, footings or pins, and can be used in a variety of site and soil conditions. The block is uniquely designed with a raised lip on the front upper edge, allowing blocks to interlock without mortar as they are stacked.



Circle No. 198 on Reader Inquiry Card

Edging system holds stonework in place

Bric-Edg is a new landscape edging system from Oly-Ola Sales of Villa Park, Ill.

The PVC edging is designed specif-

ically to support and contain bricks, cobblestones or patio blocks. It can be used for sidewalk, driveway, courtyard or patio installations.

Lightweight and easy-to-install, Bric-Edg is available as a rigid edging, or, for contoured or circular areas, in a flexible V-cut style that can be curved to a radius of about 36 inches.

Oly-Ola Sales says the Bric-Edg is suitable for use in any climate. Once



installed, an invisible, clean line is formed between the brickwork and adjacent areas.

Circle No. 199 on Reader Inquiry Card

Stump cutter improved with new features

The Rayco RG-1635A stump cutter has three new standard features which have improved performance.

Now, the 35-hp Rayco makes up to 3 1/2-inch deep cut with each pass of the 23-inch cutter wheel.

Cutting larger stumps is now easier, according to Rayco. This is possible thanks to an all-new 32-tooth "Deep Bite" cutter pattern, and significantly reduces cutting time on stumps.

Chip collection capacity has been increased to 22 cubic feet to handle more chips. The larger chip capacity, coupled with the units exceptionally big cutting dimensions, are two performance features that enable this 35-hp machine to tackle big stumps easily.

Dual cross-travel cylinders control the speed at which the cutter wheel slices through the stump. Cylinders



feed at the same rate on inclines.

Circle No. 200 on Reader Inquiry Card

AD INDEX

NO. ADVERTISER	PAGE NO.
101 American Cyanamid (Regional)	71
102 Briggs & Stratton Corp. ...	20-21
103 Cascade International Seed Co.	54
104 Cushman	CV3
297 Cushman	27
105 Cushman	41
106 Cushman	41
107 Cushman	41
108 Cushman	41
109 Deutz Corp.	61
110 Deere and Co., John	2-3
111 DowElanco/Reemay	24-25
112 Grace Sierra	47
213 Gravely International, Inc. ...	57
114 ICI Americas, Inc.	33
115 Jacobsen Div. of Textron ...	51
116 Lebon Chemical Corp. ...	6-7
117 Lesco, Inc.	23
118 Lofts Seeds, Inc.	CV4
119 Mazda Motor of America, Inc.	67
120 Mitsubishi Motor Sales of America, Inc.	53
121 Mustang Manufacturing, Inc.	22
122 Nor Am Chemical Co.	59
123 Olathe Manufacturing, Inc. ...	26
124 Olathe Manufacturing, Inc. ...	26
125 Olathe Manufacturing, Inc. ...	26
126 Oregon Fine Fescue Commission	43
127 Oregon Tall Fescue Commission	44
128 Pennington Seed, Inc.	69
129 Promark Products, Inc.	52
130 Ransomes, Inc.	49
131 Scotts Proturf, O.M.	28-29
132 Standard Tar Products Co., Inc.	26
295 Simplicity Manufacturing, Inc.	45
134 Tee 2 Green Corp.	CV2
135 Toro Co.	12-13
214 Turf Seed Co.	5
137 Turf Merchants, Inc.	39
138 Tecumseh Products Co.	55
139 Valent USA Corp.	68
140 Yazoo Manufacturing Co. ...	34
Literature Roundup	
150 Bandit Industries, Inc.	36
151 Bowie Industries	37
152 Coron Corp.	36
153 DowElanco/Gallery	35
154 DowElanco/Rubigan	35
155 DowElanco/Surflan	35
156 DowElanco/Cutless	35
157 Growth Products	36
158 Mobay Chemical Co.	37
159 Pennington Seed Co.	36
160 Proprietary Seed, Inc.	37
161 Roots, Inc.	37
162 UAP Specialty Products ...	36
163 Walker Manufacturing Co. ...	36
164 Woods Division of Hesston Corp.	36
165 Woods Division of Hesston Corp.	36

This index is provided as an additional service. The publisher does not assume any liability for errors or omissions.