

# THE CLOUDS BREAK

Welcome spring and summer rains  
nourished much of this year's seed crops for one of the best  
harvests in recent memory.

by Terry McIver, associate editor

**S**eed growers had high hopes for a good 1990 harvest after an average 1989, and this year they weren't to be denied. Company officials used words like "stable," "good yields" and "bumper crop" to describe the harvest of 1990.

The key factor in the yields was—of course—the weather, or more precisely, the well-timed periods of rain and sunshine. Ample rain fell on seed

production areas in the Pacific Northwest, but the clouds broke over most areas just in time for healthy harvests.

Bill Young, sales manager of Lofts/Great Western, in Bound Brook, N.J., says Lofts enjoyed "the most ideal harvest we've had in years.

"The weather cooperated," says Young. "And except for the rain we had in early July, which slowed harvest down 5 to 10 days, the harvest has

been excellent. We had satisfactory yields on perennial ryegrass, Kentucky bluegrass and turf-type tall fescue."

Another New Jersey-based company, Zajac Performance Seeds of North Haledon, also had a good summer.

"It was a good growing season," says Sandy Zajac, "with all the crops looking very good. This year we have





### TURF TYPE TALL FESCUE

VARIETY	MARKETER	AVAILABILITY
Adventure	Warren's	B
Apache	Turf Seed	B
Aquara	O.M. Scott	C
Arid	Jacklin/Olsen-Fennel/ Northrup King/ Vaughan's	B/B/B/B
Arriba	Northrup King	C
Avanti	Warren's	C
Bar-None	Lofts/Great Western	B
Bonanza	Proprietary/ VanderHave/Turf Seed	B/A/B
Brahma	Roberts	C
Carefree	Olsen-Fennel	B
Chieftan	Roberts	B
Cimarron	Lesco	B
Clemfine	Lofts/Great Western	B
Crew-Cut	Proprietary	C
Crossfire	Pickseed	C
Earthsaver	Turf Merchants	C
Eldorado (dwarf)	Turf Seed	C
Emperor (dwarf)	Zajac Performance Seeds	B
ERA	International	C
Falcon	E.F. Burlingham & Sons	B
Finelawn I	Fine Lawn Research	B
Gala	International	C
Galway	Northrup King	B
Guardian	Roberts	B
Houndog	International	C
Hubbard-87	Hubbard Seed & Supply	C
Jaguar	Zajac Performance Seeds	B
Jaguar II	Zajac Performance Seeds	B
Maverick II	Pickseed	C
J-89	Jackon	C
Micro	Turf Merchants	C
Mojave	Olsen-Fennel	B
Monarch (dwarf)	Turf Seed	B
Murietta (dwarf)	Turf Seed	C
Mustang	Pickseed	C
Olympic	Turf Seed	B
Rebel	Lofts/Great Western	C
Rebel II	Lofts/Great Western	B
Rebel Jr.	Lofts/Great Western	C
Sapphire	VanderHave	C
Silverado (dwarf)	Turf Seed	C
Shortstop	Pickseed	C
Survivor	Seed Research of Oregon	B
Taurus	Turf Merchants	B
Thoroughbred	Pickseed	C
Thunderbird	E.F. Burlingham & Sons	C
Traiblazer	Lesco	B
Triathalawn (blend)	Turf Seed	B
Tribute	Lofts/Great Western	B



### TURF TYPE TALL cont.

VARIETY	MARKETER	AVAILABILITY
Trident	Seed Research of Oregon	B
Trophy (blend)	Seed Research of Oregon	B
Twilight (dwarf)	Turf Merchants	B
Winchester	E.F. Burlingham & Sons	C
Wrangler	Jacklin/Lesco/Turf Merchants	B/B/B
SR 2000 (dwarf)	Seed Research of Oregon	C

### KENTUCKY BLUEGRASS

VARIETY	MARKETER	AVAILABILITY
A-34 Ben Sun	Warren's	C
Abbey	O.M. Scott	B
Able 1	Warren's	C
Adelphi	Jacklin/J&L Adikes/ Northrup King/ Vaughan's	B/C/C/B
Alpine	Pickseed	C
Amazon	Jacklin	C
America	Pickseed	C
Aspen	Northrup King	B
Banff	Pickseed	B
Baron	Lofts/Great Western	B
Blacksburg	Turf Seed	B
Bristol	O.M. Scott	C
Bronco	Pickseed	B
Challenger	Turf Seed	B
Chateau	Fine Lawn Research	B
Chelsea	Turf Merchants	C
Cheri	Olsen-Fennel/Jacklin	B/B
Classic	Peterson/Jacklin	B/B
Columbia	Turf Seed	B
Compact	E.F. Burlingham & Sons	C



### KENTUCKY BLUEGRASS cont.

VARIETY	MARKETER	AVAILABILITY
Coventry	O.M. Scott	B
Cynthia	VanderHave Oregon	C
Dawn	Lesco	B
Destiny	Jonathan Green	B
Eclipse	Jacklin/Peterson/ Vaughan's	B/B/C
Enmundi	Seed Research of Oregon	C
Estate	Roberts	B
Freedom	Jacklin/Vaughan's	B/B
Fyking	Jacklin	B
Georgetown	Lofts/Great Western	B
Geronimo	VanderHave Oregon	A
Glade	Jacklin/Vaughan's	B/C
Gnome	Turf Merchants	A
Haga	E.F. Burlingham & Sons	C
Huntsville	Jacklin	B
Indigo	Pickseed	C
Kelly	Northrup King	B
Liberty	Zajac Performance Seeds	B
Limousine	Roberts	C
1757	Lofts/Great Western	
Marquis	Roberts	C
Merion	Jacklin	C
Midnight	Turf Seed	B
Merit	Full Circle/Seed Research of Oregon	B/B
Minstrel	VanderHave	C
Monopoly	Peterson	C
Mystic	Lofts/Great Western	Fail, 1991
Nassau	Lofts/Great Western/ Jacklin	B/B
Nugget	Jacklin	B
Opal	E.F. Burlingham & Sons	C
Princeton	Lofts/Great Western	C
Parade	Northrup King/ VanderHave Oregon	B/C
RE 88	Turf Seed	B
Ram I	Lofts/Great Western/ Jacklin	C/B
Rugby	Northrup King/Turf Merchants	B/B
Sophia	VanderHave Oregon	C
Suffolk	Jacklin/Lofts/ Great Western	B/C
Touchdown	Pickseed	B
Trenton	Northrup King	B
Victa	O.M. Scott	B
Wabash	Jacklin	
SR 2000	Seed Research of Oregon	C
SR 2100	Seed Research of Oregon	C

Key:  
A = Surplus  
B = Adequate supply  
C = Limited supply



Mike Robinson: Tall fescue yields are above average.

a bumper crop."

However, Zajac reports a slight demand downturn in the Northeast due to slow building starts, proving that there are a few bad seeds in every harvest.

"The turf-type perennial ryegrass production looks good following the favorable moisture and in spite of the hot temperatures of this spring," says Art Wick of Lesco.

Wick reports that "the 1989 crop was good and inventories of most varieties are stable." According to Wick, Lesco's proprietary bluegrasses were in reasonably good supply this spring. We've had just about ideal conditions since last fall," remarks Tom Stanley, marketing manager for Turf Seed, Inc.

"Production of the Penn varieties is very good," says Stanley. "It seems to be at least an average crop, and may be a solid average crop."

Stanley also credits favorable weather conditions. "The growers don't change fertility or herbicide practices from year to year," he explains, "so the big variable was the weather."

Pricewise, bluegrass has been reported to be at about 20 cents less per pound thanks to good harvests, and ryegrass is down about a nickel.

"Prices of common bluegrass are soft," admits Gayle Jacklin, of Jacklin Seed Co., reflecting excellent yields.

"This has resulted in an increase in usage of common Kentucky bluegrass," Jacklin explains, as "seed

## ROUGH BLUEGRASS

VARIETY	MARKETER	AVAILABILITY
Colt	Pickseed	C
Cypress	Turf Merchants	C
Laser poa trivialis	Lofts/Great Western	C
Sabre	International	C

## COMMON BLUEGRASS

VARIETY	MARKETER	AVAILABILITY
Delta	Jacklin	B
Kanblue	Jacklin/Lofts	B/A
Newport	Lofts/Great Western/ Jacklin	A/B
Park	Jacklin/Lofts	B/A
S-21	Jacklin	B
Garfield	Jacklin	B
98/85	Jacklin	B
85/80	Jacklin	B

## WINTER OVERSEEDING BLENDS

VARIETY	MARKETER	AVAILABILITY
Alliance	Turf Seed	B
Dixie	International	B
Dixie Green tall fescue	International	B
Dixie Green + Sabre	International	B
Double Eagle blend	Lesco	B
Double Eagle + Sabre	Lesco	B
Eagle Blend	Lesco	B
Futura tee & fairway	Pickseed	B
Futura 2000	Pickseed	B
Marvelgreen Brand	Lofts/Great Western	B
Medalist 6	Northrup King	B
Medalist 7	Northrup King	B
Medalist 7 + Sabre	Northrup King	B
Medalist 300	Northrup King	B
Medalist 400	Northrup King	B
Medalist 400 + Sabre	Northrup King	B
Medalist 60/40	Northrup King	B
Par 3	Lofts/Great Western	B
Ph.D	International	B
Ph.D + Sabre	International	B
Playmate	Roberts	B
Problend	Lesco	B
Quartet	VanderHave Oregon	B
Spectrum	Turf Merchants	A
Sunbird	Turf Merchants	B
Symphony	E.F. Burlingham & Sons	B
Tara-Green	Hubbard Seed & Supply	B

## WINTER OVERSEEDING BLENDS cont.

VARIETY	MARKETER	AVAILABILITY
Triple Play	Fine Lawn Research	B
Triplets	Lofts/Great Western	B
Ultima (blue tag)	Lofts/Great Western	B
V.I.P. Rye	Turf Merchants	A
Vintage Plus	Lesco	B
Winter Turf I	O.M. Scott	B
Winter Turf III	O.M. Scott	B/C
Winter Turf V	O.M. Scott	B
Winter Turf IX	O.M. Scott	B
Winter Turf X	O.M. Scott	B
Yahoo!	Northrup King	B

## PERENNIAL RYEGRASS

VARIETY	MARKETER	AVAILABILITY
Accolade	O.M. Scott	B/C
Accord	Olsen-Fennel	B
Advent	Jacklin	B
Allaire	Turf Merchants	A
All-Star	Jacklin/Vaughan's/ J+L Adikes, Inc.	B/B/C
Asure	Lesco	B
Aquarius	Turf Merchants	B
Belle	E.F. Burlingham & Sons	C
Birdie II	Turf Seed	C
Blazer II	Pickseed	C
Brenda	VanderHave	B
Caddie	Northrup King	C
CBS (blend)	Turf Seed	B
Calypto	Roberts	B
Champion	Seed Research of Oregon	B
Charger	Turf Seed	B
Citation II	Turf Seed	B
Commander	Lesco	B
Competitor	E.F. Burlingham & Sons	B
Cowboy	Lofts/Great Western	B
Dandy	Northrup King	B
Dasher	Pickseed	B
Delray	Northrup King	B
Derby	International	B
Dimension	VanderHave Oregon	C
Edge	Pickseed	C
Envy	Zajac	C
Fiesta II	Pickseed	B
Gator	International Seeds	C
Goalie	Northrup King	C
Jazz	Pickseed	B
Laredo	Turf Merchants	A
Lariat	Turf Merchants	C
Legacy	Lesco	C
Lindsay	International Seeds	C
Lowgrow	Pickseed	C

## PERENNIAL RYEGRASS cont.

VARIETY	MARKETER	AVAILABILITY
Manhattan II	Turf Seed/Turf Merchants	B/B
Mondial	VanderHave	B
NK 200	Northrup King	B
Nova	VanderHave Oregon	B
Nomad	Turf Merchants	B
Omega II	Zajac Performance Seeds	B
Ovation	O.M. Scott	B
Palmer	Lofts/Great Western	B
Patriot	Turf Merchants	B
Pebble Beach	Fine Lawn Research	C
Pennant	E.F. Burlingham & Sons	B
Plus	Olsen-Fennel	B
Ranger	VanderHave Oregon	B
Regency	Lesco	B
Repell	Lofts/Great Western	C
Regal	International	B
Prelude	Lofts/Great Western	B
Riviera	Roberts	B
Rodeo	Turf Merchants	B
Saturn	Turf Seed/Zajac Performance Seeds	B/B
Sheriff	VanderHave Oregon	B
Stallion	Fine Lawn Research	B
SR4000	Seed Research of Oregon	B
SR4100	Seed Research of Oregon	B
SR4200	Seed Research of Oregon	C
246 Sunrye	Turf Seed	B
Target	Northrup King	B
Vantage	Proprietary Seeds	B
Vintage 2DF	Lesco	B
Yorktown II	Lofts/Great Western	C

## CREEPING RED FESCUE

VARIETY	MARKETER	AVAILABILITY
Cindy	International	B
Dawson	VanderHave	C
Fortress	Turf Seed	C
Jasper	Pickseed	C
Shademaster	Lesco/Turf Seed	B/C
Vista	Zajac Performance Seeds	C

## CHEWINGS FESCUE

VARIETY	MARKETER	AVAILABILITY
Atlanta	VanderHave Oregon	B
Camaro	Fine Lawn Research	1991
Center	Turf Merchants	B

packaging programs which formerly had a competing commodity as their primary ingredient are now changing



back to Kentucky bluegrass."

Mike Robinson of Seed Research of Oregon had good news to report in the tall fescue department. "We had a dry fall last year, and some very hot weather during pollination," explains Robinson, adding that tall fescue yields were above average.

Jacklin of reports that there has

*'Seed production acres are up and very good yields are anticipated.'*

—Joe Churchill  
Northrup King

been "a tremendous increase" in turf-type tall fescue acreage.

"This year, there will be an adequate amount of tall fescue available," says Jacklin, "with selected shortages on some of the newer, elite dwarf types."

Both Wick and Robinson say the fine fescue crop was light. "The 1990 Oregon fine fescue crop looks thin," says Wick. "Many of the fields are four years or older, which may reduce yields. Coupled with hot weather stress early this spring, these factors point to a 'short' crop. No one expects anything above an average crop of fine fescues."

Churchill says yields on perennial ryegrasses came in "as expected, if not a little better. One field of Dandy

perennial ryegrass cleaned out at 2,450 pounds per acre, a great increase from what would usually be 1600 pounds per acre."

According to Steve Tubbs, vice president/general manager of Turf Merchants, Inc., the harvest in general was good, except for the Madras area, where a good portion of the proprietary bluegrasses are grown. Tubbs says yields in that area were off about 30 percent. "In fact," says Tubbs, "one major proprietary is being allocated. The common bluegrass in Washington and Idaho was out-yielding the

proprietarys in Madras."

"The bentgrass supply has finally caught up with demand," says Tubbs. "There are no shortages in VIP creeping bent blend, and no price erosion except in the commons like Seaside."

Tubbs says the seed market is in a near-price war situation.

"People are getting more aggressive," says Tubbs. "Companies that have never been guilty of price cutting are (cutting prices) for various inventory and cash flow reasons."

*continued on page 46*

**TURF TYPE  
OREGON TALL FESCUE  
SEED FROM OREGON**

**Beautiful or Functional**

Have them both! Rich, green Turf Type Tall Fescue gives you the beauty you want with a minimum of care.

Excellent for lawns, play areas, parks, airfields, roadways, golf courses and industrial sites.

Proven disease resistant, Oregon Grown Tall Fescue seed produces an adaptable, weed free turf that not only persists through summers and winters, but maintains its beauty.

Insist on Turf Type Tall Fescue seed grown in Oregon.

For more information contact your seed dealer, or write to:  
**OREGON TALL FESCUE COMMISSION**  
 866 Lancaster Dr. SE, Salem, Oregon 97301  
 Phone: (503) 585-1157

Circle No. 127 on Reader Inquiry Card



**CHEWINGS FESCUE cont.**

VARIETY	MARKETER	AVAILABILITY
Dawson	Northrup King	C
Enjoy	International	B
Epsom	VanderHave Oregon	C
Jamestown	Lofts/Great Western	B
Jamestown II	Lofts/Great Western	NA
Jasper	Pickseed	NA
Koket	E.F. Burlingham & Sons	B
Longfellow	International	C
Mary	VanderHave Oregon	C
Roulette	Olsen-Fennel	C
Shadow	Turf Seed	B
SR 5000	Seed Research of Oregon	C
Victory	Pickseed	B
Waldorf	VanderHave Oregon	B

**HARD FESCUE**

VARIETY	MARKETER	AVAILABILITY
Attila	Turf Merchants	B
Aurora	Turf Seed	B
Crystal	Lofts/Great Western	B
Reliant	Lofts/Great Western	B
Scaldis	VanderHave Oregon	C
Silvana	VanderHave Oregon	C
SR 3000	Seed Research of Oregon	B
Spartan	Pickseed	B
Valda	International Seeds	C

**SHEEP FESCUE**

VARIETY	MARKETER	AVAILABILITY
Azay	Pickseed	C
Bighorn	Turf Seed	C
MB-86	Jacklin	C

**ANNUAL RYEGRASS**

VARIETY	MARKETER	AVAILABILITY
Common	Pickseed	A
Concord	Olsen-Fennel	B
Gulf	Proprietary Seeds	B

**BENTGRASS**

VARIETY	MARKETER	AVAILABILITY
Carmen	VanderHave Oregon	C
Cobra	International Seeds	B
Emerald	International Seeds	B
National (creeping)	Pickseed	B
Pennecross	Northrup King/Turf Seed	B/B
Penneagle	Northrup King/Turf Seed	B/B
Penlinks	Northrup King/Turf Seed	B/B
Penrway	Northrup King/Turf Seed	B/B
Penrtio	Northrup King/Turf Seed	B/B
Providence	Seed Research of Oregon	B
Putter	Jacklin	B
SR 1020	Seed Research	B
Traconta	VanderHave Oregon	C
V.I.P. blend	Turf Merchants	A
Southshore	Lofts/Great Western	Fall, 1991

**FINE FESCUE**

VARIETY	MARKETER	AVAILABILITY
SR 3200 (blue fescue)	Seed Research of Oregon	C
Dawson red	Northrup King	B
Dover chewings	Northrup King	B
Ruby creeping	Northrup King	B
Scaldis hard	Northrup King	B
Flyer creeping red	Fine Lawn Research	C

## Planted seeds yield new varieties

**Northrup King** has begun to market two new perennial ryegrasses, Andy and Target. Joe Churchill says both contain endophytes, and will exhibit good insect resistance. Both have a dark green color described as "exceptional," and good tillering capability.

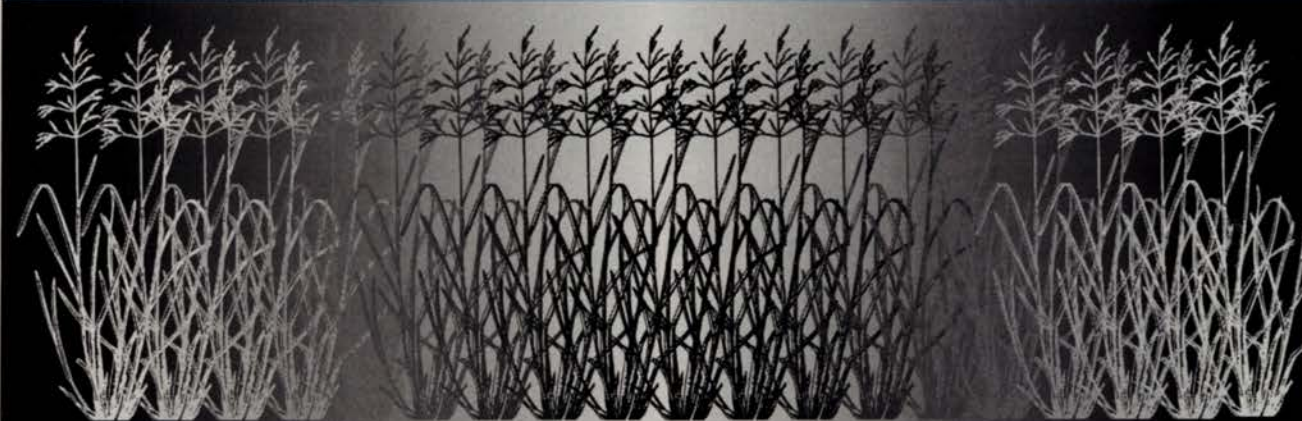
Sheri Burlingham reports that **E.F. Burlingham & Sons** has begun production of Opal, the latest Ken-

ety available in greater quantities next year. Robinson describes Crusader as a high endophyte mixture that is very low maintenance. The mix consists of SR 4200 perennial ryegrass, SR 3000 hard fescue, and SR 5000 chewings fescue.

Cobra creeping bentgrass now appears on golf course spec sheets for tees and fairway, says Doug Toews of **International Seeds**. Toews says

very heat and drought tolerant and has high disease resistance. Gayle Jacklin says Advent is good for overseeding dormant winter grasses and can be used on the entire golf course.

From **VanderHave Oregon, Inc.** comes word of Sapphire, a new release turf-type tall fescue, which will be in adequate supply until 1991. James Butala of VanderHave



tucky Bluegrass to come from the breeders of Naga and Sydsport. Supply of Opal is very limited. Opal is listed in the national trials as WWAG 495.

**Lesco's** Art Wick says the new Legacy dwarf perennial ryegrass is a new "elite" variety selected for its dwarf growth habit, fine texture and very dark green color.

According to Wick, Legacy exhibits improved resistance to leaf-spot and brown patch, and contains a 94 percent endophyte level, providing resistance to above-ground feeding insects.

Wick also reports that Lesco is evaluating new experimental tall fescues for regional use. "Several experimentals, especially targeted for the Southeast, are in their final stages of evaluation and release of two varieties from this program is expected in 1990," says Wick.

From Seed Research of Oregon comes a favorable report on SR 2000, a Kentucky bluegrass developed to blend with turf-type tall fescues. **Mike Robinson** says the variety is very compatible with the fescues, yet can also do well on its own. "It's lower growing and very attractive," says Robinson, "with nice density, color and leaf texture."

Crusader is a Seed Research vari-

ety available in greater quantities next year. Robinson describes Crusader as a high endophyte mixture that is very low maintenance. The mix consists of SR 4200 perennial ryegrass, SR 3000 hard fescue, and SR 5000 chewings fescue.

Scott Patterson of **Peterson Seed Co.** tells us that Monopoly bluegrass was rated No. 1 in Kentucky and No. 2 in Iowa, in the USDA's low maintenance trials.

"With the turf-type tall fescues, we've taken a grass that we've known for years to have good drought tolerance, but has never been overly attractive," says Toews. "So now we have varieties that are darker in color, more attractive for home lawns, and that also work in golf course bunkers."

**Lofts Seed, Inc.** recently introduced "an unusually aggressive" new Kentucky bluegrass. The company reports that P-104, marketed under the name Princeton, is so vigorous that only between 5 and 15 percent completely dominates a sod blend in two-three years. Princeton, says Lofts, is the only commercial bluegrass that combines aggressive growth with high quality.

**Jacklin Seed Co.** reports that Advent, a new release from Rutgers University, is a new class of perennial ryegrass: slow growing, low-growing, and very dense. It's also

also reports that Dimension, a new turf-type perennial ryegrass is also available, but quantities are limited at this time.

Customers of **Zajac Performance Seeds** have two new varieties to choose from, says Sandy Zajac: Vista, a spreading red fescue, and Envy, Zajac's new perennial ryegrass.

Bill Junk reports that Flyer creeping red fescue from **Fine Lawn Research**, Dublin, Ohio marks a new generation of that variety, usually referred to as the turf market's "poor cousin." Flyer is a low-growing turf-type spreading red, capable of producing an attractive, dense, fine-textured turf with a dark green color. It has performed well in U.S. turf trials, and exhibits excellent resistance to powdery mildew and red thread.

New from Turf Seed, Inc. is Penntrio, a certified blend of Pennncross, Pennegle and Pennlinks.

"There has been a demand from superintendents for a certified bentgrass blend," explains marketing manager **Tom Stanley**. "The broader genetic base from the three-way blend," says Stanley, makes Penntrio more adaptable to wide range of conditions."

—Terry McIver □