

## LANDSCAPE MANAGEMENT

### ASSOCIATIONS

# Research a key to keeping the green industry green

#### NATIONAL REPORT —

Major organizations within the green industry are realizing how important research money has become.

On one hand, the Golf Course Superintendents Association of America (GCSAA) recently contributed \$25,000 to the USGA/GCSAA Turfgrass Research Committee. On the other hand, the American Society of Nurserymen (AAN) has told the House and Senate Appropriations Committee that more money must be made available for agricultural research programs.

The GCSAA's money will support ongoing scientific work on new turfgrass varieties that would require less water and be more disease resistant.

GCSAA President Dennis D. Lyon made this observation at the annual USGA/Golf Writers Association of America banquet held during the U.S. Open in Rochester, N.Y.

William H. Bengeyfield, national director of the USGA Green Section, noted that more than \$2.8 million has been distributed by the committee since 1983. "We thank GCSAA for the research funding they provide, and we appreciate the time people like (GCSAA vice president) Jerry Faubel, Lyon and (executive director) John Schilling contribute to the committee."

"GCSAA sincerely sup-



Chinese interns look over seed samples at Jacklin Seed in Post Falls, Ida., where research is a continuing project.

ports the USGA turfgrass research project." said Lyon. "We look forward to working together with the USGA on other projects in

the future."

AAN representatives, appearing in Washington, D.C. recently, cited a report by the U.S. Department of

Agriculture and Economic Research Service. The report estimated 1987 grower cash receipts from environmental horticulture crops at \$4.3 billion.

"Due in part to this continuing rate of growth," said Duane Jelinek, AAN director of horticultural research, "tremendous potential exists for increased job opportunities as well as positive impacts on the environment."

However, the AAN said it is aware of federal deficit woes, and insisted it doesn't want a handout.

"We have restricted our recommendation to maintaining the integrity of research programs which are absolutely vital to the nursery industry," said Ben Bolusky, AAN's director of government affairs.

Of greatest concern to the association is continued funding for its plant science research programs, the cooperative state research service and extension services. □

#### GOLF

## Designers should respect nature, Dye says

CHICAGO — Today's golf course designers face many new challenges, thanks to heightened concerns about environmental preservation, says Pete Dye, president of the American Society of Golf Course Architects (ASGCA).

Dye says designers must

comply more with standards relative to wetland preservation, use of freshwater supplies and the impact of pesticides on groundwater. And while he supports such standards, he believes the approval process can defer a project for years, and hold up the nec-

essary permits until issues can be studied completely.

For that reason, Dye says ASGCA members are working to identify the problem areas and propose positive alternatives.

"The ASGCA Foundation, for instance, recently

*continued on page 11*

**DESIGN** from page 8

commissioned a study by Dr. Martin Petrovic of Cornell University on the effects of nitrates on groundwater." That report was to be available in May.

Dye believes more concrete data is required to support the idea that properly maintained facilities embellish, rather than destroy the environment.

"No issue has raised the level of consciousness higher than the subject of wetland and marshland boundaries," says Dye. "Thus, integrating wetlands into the framework of a Master Plan without jeopardizing the natural habitat or course playability has become a major challenge to golf course architects."

Dye says wetlands have become a high priority of regulatory agencies. That concern and subsequent public hearings have resulted in a slower permit procurement process.

"Wetlands have been reduced to less than 99 million acres from the 215 that existed in 17th century America," says Dye. "So it is imperative we protect a valuable natural resource." □

**NEXT MONTH:**

Bio-control of turf pests

**TREES**

# Universal Studios gets a giant

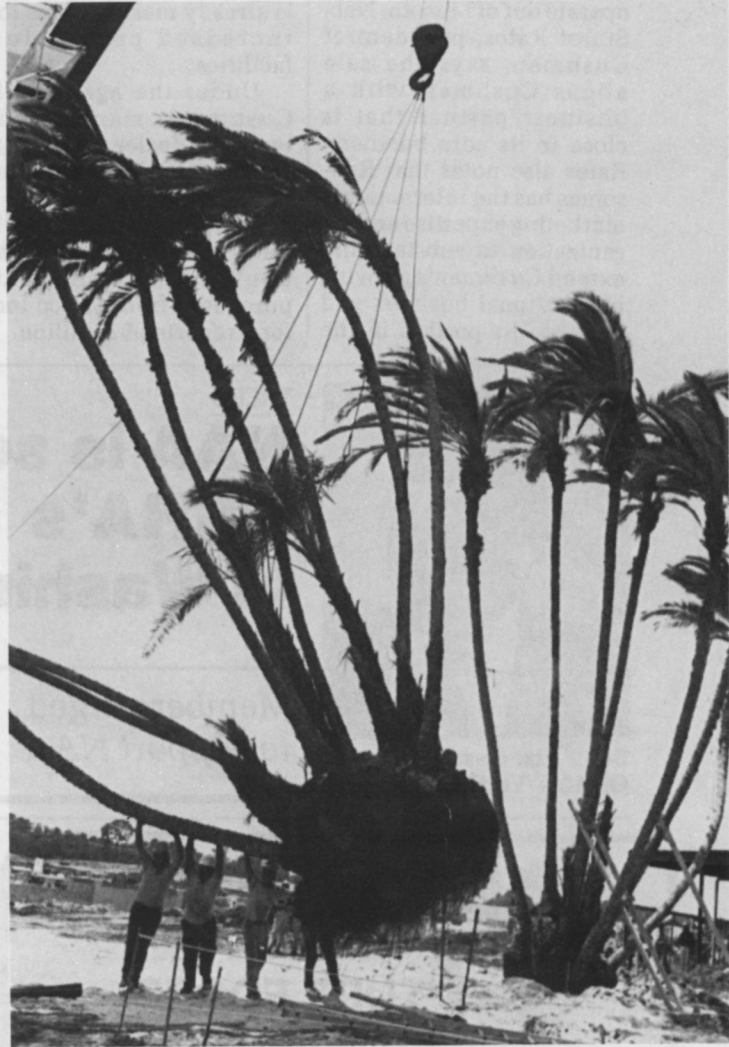
ORLANDO, Fla. — An extraordinary project came Ed Yates's way recently: uproot, transport and replant a 38-foot Phoenix reclinata palm tree.

Yates's Lakeshore Tree Moving was contracted by Universal Studios to move the tree from an area nursery to the movie company's soon-to-be-completed Orlando lot. Developer Marshall Cohn had purchased the nursery land, and was looking for ways to clear it for a condominium complex.

Moving the 43-year-old tree 13 miles required a lot of planning. "We had some small problems, but we solved them as they came up," says Yates. "We started by going up into the tree with a sky reach to clean it. We then dug a 12-inch trench around the ball, and filled the trench with sawdust. We cut the ball in two halves with chain saws and cross-cut saws."

The police escort would not be available for two days, during which time the tree ball was insulated and received constant watering. Yates says replanting the two halves exactly as they had originally been took about two hours

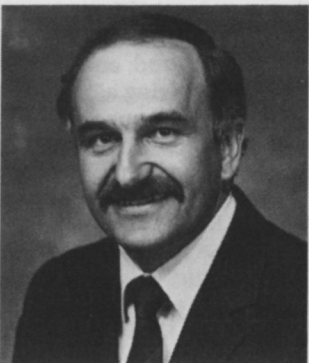
Universal Studios/Florida opens in May, 1990. □



Workers support a lower trunk as one half of a 38-foot highpalm tree is positioned at Universal Studios in Florida.

**INDUSTRY**

## Ransomes consummates Cushman buy; also purchases Salsco line of products



Adam: Cushman, Ryan and Brouwer will continue to be run independently.



Rafos: Partnership will enhance Ransomes' domestic and international markets.

JOHNSON CREEK, Wisc. — Landscape managers will still be able to purchase Cushman equipment from their usual distributors despite a major deal in which product lines changed hands last month.

Ransomes PLC added to its influence on the turf equipment market by first purchasing products previously marketed by Salsco Inc. Then, it purchased Cushman from OMC Lincoln for a reported \$150 million.

The Cushman group includes Cushman turf vehicles and mowers, Ryan aerators and sod cutters, and Brouwer mowers, vacuums and sod harvesting equipment. The group will be run as an independent entity under the Ransomes America umbrella.

"Cushman will operate as before," says Helmut Adam, president of Ransomes America. "It is a well-run company with a good name. We are not going to change something

**RANSOMES** from page 11  
Cushman."

Manufacturing and marketing of Cushman products will continue to operate out of Lincoln, Neb. Stuart Rafos, president of Cushman, says the sale aligns Cushman with a business partner that is close to its core business. Rafos also notes that Ransomes has the international marketing expertise and organization to substantially extend Cushman's growing international business and enhance its position in the

domestic market.

Rafos believes Cushman's annual sales of \$100 million will double in the near future. The company is already making plans for increased production facilities.

Under the agreement, Cushman's management team and dealer network in the U.S. and Canada will retain the status quo.

It's not the same with Ransomes' "Turf Renovation" line of equipment, purchased from Salsco Inc. for a reported \$2 million.

Those products—which include walk-behind, tow and riding core aerators; a slicer/seeders; a walk-behind dethatcher; self-propelled drop spreaders; tailgate and towed truck loaders and a walk-behind leaf blower—will now be marketed through Ransomes dealers.

Despite the sale, Salsco plans to remain in the turf field. President Sal Rizzo says the company will introduce new products at the upcoming PLCAA show next month. □

## TURFGRASS

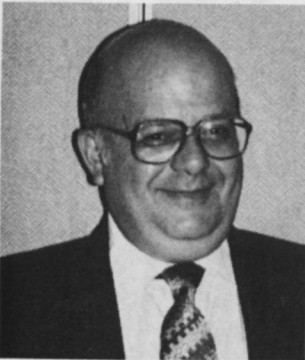
### Pre-grown grass to enter the U.S.

ESSONE, France — A new pre-grown grass said to be weed- and disease-resistant is being marketed in the U.S. by France's Darbonne Corp.

According to press reports, Minute Grass is more flexible and durable than sod grown in soil, and is said to remain green year-round.

Minute Grass uses a technology that involves mixing a customer's choice of grass seed with bark containing natural resins. The mix is then spread mechanically over a perforated micro-plastic film. Because Minute Grass is grown densely above the surface, it is impervious to weed and other impurities, according to Darbonne Corp. Minute Grass can be grown on tile, concrete, sloped hillsides, balconies and patios. Darbonne reports that it is three times lighter than sod, three times more prolific in growing season and can be stored under 29°F refrigeration for up to six months.

For more information on Minute Grass, contact Darbonne Corp. at: 6, BD, Joffrey, Milly La Foret, Essone, France 91490. □



Bob Felix: dissatisfied with OSHA's Vertical Standard

## TREES

# NAA is set to battle OSHA's regulation in Washington soon

Members urged to support NAA

AMHERST, N.H. — The National Arborist Association is preparing to meet with representatives of the Occupational Safety and Health Administration in Washington next month to challenge OSHA's proposed Vertical Standard regulation.

The NAA will give testimony at public hearings in Washington on Nov. 28 and in California Dec. 12.

By late August, more than 75 firms had expressed dissatisfaction to the regulation with OSHA, according to NAA executive vice president Bob Felix.

The regulation, OSHA Proposed Sec. 1910.269 Electric Power Generation, Transmission and Distribution Standard, "is a very important matter for the entire tree care industry," says Felix.

According to the NAA, undesirable aspects of the regulation include:

- barring line clearance tree contractors from performing storm work;

- requiring all crews of two or more employees that work on a tree any branch of which is within 10 feet of a power line to have at least two crew members trained in CPR;

- allowing only a line

clearance tree trimmer to do work on a tree that has a branch within 10 feet of a conductor;

- requiring all tree trimmers working trees proximate to overhead conductors to be tied into the tree once they reached four feet above ground; and

- requiring a chipper to be treated as energized if "it is possible" that the truck boom can be brought within 10 feet of an overhead line.

NAA members are urged to support the organization in its upcoming efforts. Write to the NAA at The Meeting Place Mall, Route 101, P.O. Box 1094, Amherst, NH 03031-1094; (603) 673-3311. □

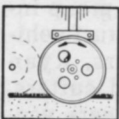
## TURFCO EDGE-R-RITE

### MULTI-PURPOSE TURF EDGER

Just like a small sod cutter, the Blade does not spin, the oscillating motion does not throw debris.

Self-propelled and push models available.

Rugged design for commercial use.



Optional Blades:

Disc Blade for cutting straight edge along sidewalks and driveways.



Right Angle Blade for golf course sand traps, and flower beds.

"V" Blade for removing a strip of turf along a sidewalk.



Right Angle Blade

Turfco Mfg., Inc.  
3456 N. Washington Ave.  
Minneapolis, MN 55412-2688  
Ph. 612/588-0741  
Telex 5106013762

Write or call for detailed literature

**TURFCO**

Circle No. 136 on Reader Inquiry Card