

# INSECT CONTROL FOR WOODY PLANTS

Insect control measures for woody plants can be quite involved. Here's a season-by-season strategy for battling the most common yet damaging pests.

by D. G. Nielsen, Ph.D., and J. R. Baker, Ph.D.

**T**rees and shrubs are valuable components of residential and commercial landscapes and other parts of our community and urban forests. Although they can add significantly to real estate values, poorly managed trees and shrubs may become a liability.

With proper attention to site selection, careful planting and scheduled maintenance, landscape plants are excellent investments providing many years of diverse benefits such as shading, screening, noise abatement, beautification and air purification.

The following guides discuss some of the most important arthropod (insect and mite) pests of trees and shrubs, and explain how to control them most efficiently. The information is organized by seasons to help you know when to implement pest management procedures.

(In all cases, whenever a pesticide is used, the practitioner should read the label on the container before the insecticide, miticide or other pesticide is used.)

## Control tactics

Some insect and mite pests are vulnerable to control tactics after plants have become acclimated to winter temperatures. Landscape managers can capitalize on this window of op-



If the plant is under water stress and aphid numbers are building up, an insecticidal spray should be used to prevent premature leaf drop on valuable specimen trees.

portunity by performing pest control functions when other maintenance activities are not competing for their time.

Horticultural spray oils can be used safely on a variety of woody plants to control overwintering stages of spider mites, aphids, adelgids, and armored scales.

Oils can be used throughout the year whenever the temperature is above freezing and plants are not under moisture stress, except when the new growth has just emerged and the leaves are tender. The following cautions should be considered before and when using oils to control pests on

trees and shrubs:

1. Read the label to make sure the product is not phytotoxic to the plants to be sprayed.

2. Do not use oils in the fall after leaves have begun to change color and before the trees have become dormant. (In the South, woody plants may not become dormant until late December).

3. Do not apply oils to tender new growth in the spring.

## WINTER

### November-March

Adelgids are small, soft-bodied sucking insects that feed on the needles or bark of conifers, including spruces, pines, and Douglas fir. On spruce they cause

pineapple-shaped galls to form on the base (Eastern spruce gall adelgid on Norway and white spruce) or at the terminal end (Cooley spruce gall adelgid on Colorado spruce) of new growth in the spring. On Douglas fir they feed on the underside of needles, causing needle distortion and minor chlorosis.

Most adelgids overwinter as young nymphs on the undersides of branches or needles. Pine bark adelgids overwinter as eggs, nymphs, or adults in bark cracks and crevices on white pine. Copious production of fluffy filaments by nymphs and adults often cause trunks of white pine to be

almost solid white. This population density can debilitate a tree, reduce growth rate and cause tree decline.

Adelgids can be controlled on spruces any time after galls open in late summer until just prior to bud break the following spring.

Every effort should be made to get the toxicant (spray) to the underside of branches where the overwintering stage is located. Horticultural oils may provide good control, but they often remove the bloom from Colorado spruce that gives them their blue cast. Although the bloom will return later in the year, customers are commonly upset when their blue spruce changes color following a pesticide treatment.

Sevin or lindane, applied as a thorough-coverage, hydraulic spray, provide excellent control of adelgids. Recent studies have shown that some of the newer synthetic pyrethroids and Safer's insecticidal soap show promise for controlling adelgids. Be sure to check the pesticide container label to determine that the pest target and its host are cleared for the intended use.

### Mite control

Spider mites, including spruce spider mite on coniferous evergreens and southern red mite on hollies, azaleas and other broadleaf evergreens, remove plant juices and deposit silk and waste material on their hosts, causing leaves to become dull and bronze colored.

Most mite feeding damage is done in spring and fall when temperatures are not extreme. They overwinter as eggs, which are usually susceptible to control with horticultural oil used at the dormant season rate.

Be especially watchful for damaging spider mite populations during and following periods of drought. Spider mites were a serious problem during the drought of 1988 and may be abundant again in 1989.

False spider mites are tiny, flat organisms that feed and reproduce slowly throughout the year in the South. Most "winter injury" symptoms on aucuba, azalea, and Japanese hollies are due to feeding by false spider mites.

Horticultural oil and other miticides give adequate control of these pests. Treatment is appropriate at any time of year except in early spring when new, tender growth is emerging.

**Aphids** are small, soft-bodied sucking insects that insert their mouthparts into the phloem of leaves, stems, and roots to remove sap. They excrete honeydew, a sweet, clear liquid that coats heavily infested plants and drips on cars, walkways, and other surfaces, often causing severe nuisance problems.

### Aphid damage

Honeydew serves as a substrate for sooty mold fungi that reduce the aesthetic appeal of host plants and limit their ability to manufacture food



Large caterpillars are difficult to control with insecticides. After they have finished feeding there is little justification for applying one.

through the process called photosynthesis. Some species (melon and apple aphids) feed on the most succulent part of the plant. Others (giant willow, giant bark, and Cinara aphids) feed on stems.

High aphid populations can cause leaves to yellow and fall prematurely. Many aphids overwinter as exposed eggs on conifer needles or on stems and buds of other kinds of woody plants. If damaging aphid populations were present the previous summer or fall, an application of horticultural oil before bud break will reduce the spring aphid population, thereby giving the tree a chance to recover before aphids build up again during the following spring and summer.

**Soft scales** are another kind of sucking insect that drains a tree's energy and reduces its ability to manufacture food by producing honeydew, on which saprophytic sooty mold fungi grow. Heavily infested tulip trees or agnolias may be killed outright by soft scales.

Soft scales that overwinter as nymphs (including cottony maple, cottony maple leaf, magnolia, pine tor-

toise, and Fletcher scales) are at least somewhat vulnerable to horticultural oils during the dormant season. Even a moderate level of control during the dormant season will be beneficial, because soft scales consume copious amounts of plant fluid in the spring and summer before completing their development and before the highly vulnerable crawler stage is present.

## SPRING

### (April-late June)

Most insects become active in the spring, responding to warmer weather and resumption of plant growth and development. Monitoring trees and shrubs or pests during this time is one of the most important tactics in rational control programs.

Newly-expanding or expanded leaves should be checked for the presence of sucking insects and mites, leafminers, and defoliators. Tree limbs and trunks should be inspected for presence of active borer galleries as evidenced by sawdust or oozing from entrance holes.

Although borer sprays are not effective after the larvae have become established beneath the bark surface, spring is a good time to determine if plants are infested, so appropriate plant health care and direct insect control practices can be implemented when they will be most successful.

### Defining defoliators

Insects that consume foliage are commonly called **defoliators**. They are one of the earliest insects to become active in the spring. Eastern tent caterpillar, whitemarked tussock moth, fall cankerworm, and some pine sawflies seem to begin feeding even before we notice new leaf growth.

At times, their populations are high enough to cause significant defoliation.

Commonly, their presence and the webbing that tent caterpillars produce an unsightly appearance. If the infestation is not noticed until much of the plant has already been defoliated, it may be too late to use a direct control measure that season.

Large caterpillars are much more difficult to control with insecticides, and after they have finished feeding there is little justification to apply a control measure. Instead, they should

be controlled during their next generation while caterpillars are still small.

Most lepidopterous defoliators (moths and butterflies) and hymenopterous foliators (sawflies are relatives of bees and wasps) are susceptible to insecticidal control. Sevin, Orthene, diazinon, Dursban, Turcam/Dycarb, malathion, Dylox, and synthetic pyrethroids are all effective against lepidopterous defoliators.

Preparations of the bacterium, *Bacillus thuringiensis*, more commonly known as Bt, are also effective against these pests, especially if used when larvae are small. The hymenopterous sawflies are susceptible to Sevin, Orthene, Dursban, and synthetic pyrethroids.

Elm leaf beetle larvae and adults consume elm foliage throughout the spring and summer. They overwinter as adults, lay eggs on the underside of leaves in the spring, and complete two generations per year throughout much of their range.

Sevin, Orthene, Turcam/Dycarb, and synthetic pyrethroids are effective against both larvae and adults, as is a new strain of Bt known as "San Diego." Furthermore, Sevin or a synthetic pyrethroid sprayed on elm trunks just prior to the descent of the mature larvae of the first generation kills many of the larvae and may reduce defoliation by the second generation. This tactic can be expected to have best results when an entire neighborhood is treated.

Trunk spraying might be especially useful in areas like Manhattan, New York, where canopy spraying is not permitted.

**Armored scales** are soft-bodied, sucking insects that remove plant fluids from stems, leaves, or roots. They do not produce honeydew, but may become numerous enough to dramatically reduce plant vitality or even cause its death. They are called armored scales because after the first nymphal stage has molted, the succeeding stages are protected by its shed skin and the secreted "test" or armor.

### Scale protection

Pesticidal sprays that are effective against active crawlers and settled first nymphs are usually ineffective once the nymph has molted and is protected by the test. Consequently, one window of opportunity to control armored scales should be when they are crawlers or newly settled nymphs.

Determining when this occurs requires close inspection of infested plants with the aid of magnification device such as 10x hand lens. (To use a hand lens, hold the lens near your

## Preventive maintenance still the best defense

Plants growing on undisturbed, native sites are often vigorous and suffer little from attack by insects, mites, or pathogens. However, many landscapes are on disturbed or non-adaptive sites like city streets, parking lots, malls and parks. In these places human activities or harsh environmental factors decrease the vitality of trees and shrubs and they are commonly attacked by damaging organisms that further decrease their aesthetic appeal and longevity.

Many insects and mites are opportunistic in that they cannot successfully attack a healthy tree or shrub. Therefore, the first line of defense against these opportunistic pests is to keep trees and shrubs healthy and vital. This can be done by preventive maintenance in the form of plant health care.

Preventive maintenance includes mulching trees to keep mowers from wounding the bark; irrigating during summer and fall droughts; aerification of the soil to provide oxygen to roots; and proper fertilization (following the directions of a soil test report). Still, some pests such as the Japanese beetle can attack perfectly healthy host plants. The landscape manager will have to directly intervene to prevent damage that may threaten plant beauty or survival. □

—the authors

eye, and stabilize it by pressing the side of your thumb against your cheek. Then, bring infested foliage into focus by moving it toward the lens.)

Plants infested with armored scales should be sprayed after all crawlers have hatched. The only way to determine when this has occurred is to check for crawler hatch and to overturn female coverings to make sure eggs are no longer present. This procedure works well for those armored scales that overwinter as eggs, including pine needle scale and oystershell scale.

Pine needle scale can be controlled

with a single application of an effective insecticide applied sometime in late April or early May, depending upon your geographical area. Oystershell scale crawler hatch occurs at different times on different hosts within any one geographical area. Also, hatch on a single host plant occurs over a period of at least two weeks in some parts of the country. Therefore, two applications spaced about 10 days apart, beginning several days after first crawler hatch in late May or early June, are required to achieve successful control of this pest.

Euonymus scale, which attacks both euonymus and pachysandra overwinters as inseminated females, and crawler hatch is protracted in the spring. Before spraying, prune out the most heavily infested branches if feasible. Two or three applications of Cygon or another effective insecticide, spaced at 10 day intervals, beginning several days after first crawler hatch, are required to control this pest. In all cases, high pressure, high volume sprays should be used to control all armored and most soft scale infestations.

All armored scales that have more than one generation per year (pine needle, euonymus, and white peach scales) should always be controlled during the spring crawler hatch, because the hatching period is shorter at that time and fewer pesticide applications are required to provide control. Orthene, diazinon, Dursban, and Sevin have been used to control armored and soft scales for a number of years.

During the past three years Safer's insecticidal soap has been the best product against pine needle scale crawlers in tests in Ohio. It should be equally effective against other scales if applied as a thorough-coverage spray during the crawler and first nymphal stages.

### Horticultural oil

Horticultural oil may also be effective against armored scale crawlers and settled first nymphs. Be sure to check the container label to determine that the product is labeled for the specific target pest on the host that will be sprayed.

Aphid populations can explode since a new generation can be produced every 10 to 15 days in the North and even faster in the South. In the North, they are often at damaging population density during summer drought or just after a drought. Check the underside of leaves periodically, especially during hot, dry weather to determine if aphids are present and whether their population is increas-



Clearwing moth borers are common in ash, dogwood, flowering fruit trees, lilac, oak and rhododendron. Borer larvae feeds beneath bark.

ing. If the plant is under water stress and aphid numbers are building up, an insecticidal spray should be used to prevent premature leaf drop on valuable specimen trees.

Be sure to thoroughly irrigate plants under moisture stress before applying a pesticide to avoid pesticide injury to the plant. In the North, aphid impact is most common on maples and oaks. In the South, aphid populations are often high in late winter and early spring before lady beetles and

other predators become active and abundant enough to provide control.

On the other hand, crape myrtle aphid populations often become damaging later in the summer. Mist-blower applications are excellent against free-living aphids. Insecticidal soaps are registered for use against aphids on shade trees and shrubs, but they have not been effective by themselves against the common birch aphid.

Soaps may be more effective when

combined with horticultural oil or a conventional insecticide. There are many other aphicides labeled for use in nursery and landscape management.

#### Lindane kills adelgids

Overwintering adelgids can be controlled by using hydraulic application of lindane or Sevin, stressing coverage to the underside of branches and leaves before budbreak. Cooley spruce gall adelgid on Douglas-fir is most vulnerable to contact action when the insecticide is sprayed just when the bud scales are being pushed away from expanding needles.

Once buds have broken, adelgids on spruce are protected within galls. They do not become vulnerable again until the gall matures, splits open and new adelgids emerge to mate and lay eggs the following August or September.

Birch, boxwood, and holly leaf-miners are highly specialized insects whose larval stages injure trees and shrubs by destroying leaf tissue. The results of their activity is analogous to that caused by defoliators.

Birch leafminer is a sawfly (related to honey bees) that overwinters in cocoons in the soil. Adults emerge in

## The Brouwer difference...

"dollar for dollar there is no better triplex mower on the market today"



**BROUWER TRIPLEX-376...** designed from "the grass up" for the professional. Compare the high quality engineering, rugged reliable performance, and you will be convinced that in the long-run your equipment investment should include a Brouwer Triplex-376. It is the perfect mower for a wide range of applications where grass requires the best in routine maintenance.

#### SOME OUTSTANDING FEATURES:

- 5.8 m.p.h. (9.4 Km/h) transport speed
- 74 in. (188 cm.) width of cut
- Rear reel can be operated independently
- Height of cut: 1/2 in. to 3 in. (1.3 cm. to 7.6 cm.)
- Transport width only 69 in. (175 cm.)
- Low center of gravity
- Differential lock

Call your Brouwer dealer for more information... TODAY

Woodbine Ave., Keswick,  
Ont., Canada L4P 3E9  
Tel. (416) 476-4311  
Fax. (416) 476-5867

**BROUWER**™  
TURF EQUIPMENT LIMITED  
An Outboard Marine Corporation Company

7320 Haggerty Rd.,  
Canton, MI. 48187  
Tel. (313) 459-3700  
Fax. (313) 459-8778

May; there are three or more generations per year in much of its range.

Foliage can be protected by spraying when the adult sawflies are actively mating and feeding on birch leaves. Sevin, malathion, lindane and synthetic pyrethroids are effective when used before eggs are deposited within leaf tissue. After egg laying has begun or mines have formed, a systemic insecticide like Orthene or Cygon should be used.

Holly leafminer is a true fly that overwinters in the larval stage within mined leaves and emerges in May. Spring application of Orthene, diazinon, Dursban, Sevin, or a synthetic pyrethroid is effective before eggs are laid. After oviposition has begun, Orthene should be used to kill newly established larvae.

Boxwood leafminer is a gall midge that also has just one generation per year. A mid- to late-spring application of Cygon will provide adequate control of this pest.

#### What to use

**Spider mites**, such as two-spotted spider mite and tumid mite, are common and damaging on plants under water stress and during long, hot summers. They complete many generations

throughout the spring and summer.

Kelthane, Mavrik, Talstar, Soap and Pentac are usually effective against spider mites. Whenever a product is used that does not kill mite eggs, you must make two applications

---

### The first line of defense against these opportunistic pests is to keep trees and shrubs healthy and vital.

---

at a five day (South) or ten day (North) interval to achieve an acceptable level of control. A hydraulic sprayer must be used to insure thorough coverage, especially for plants with dense foliage like foundation plantings, conifers, and other evergreens.

**Root weevils** (black vine, strawberry root) can be destructive in both adult and larval stages. Adults chew notches in leaf margins. Larvae consume small roots and debark larger roots, sometimes causing death of

foundation plants like rhododendron, azalea, and yew (taxus).

The best approach for controlling root weevils is to spray foliage after adults emerge above ground in spring and summer but before they begin to produce eggs. Hydraulic sprays of Turcam/Dycarb, Mavrik, Talstar or Tempo 2 should begin in mid-June, followed by repeat applications at three to four week intervals until August.

Every effort must be made to achieve thorough coverage, spraying all adult hosts, including conifers, taxus, rhododendrons and azaleas, euonymus, hosta, Japanese holly, etc.

Level of control is directly related to degree of coverage and following through with repeat applications at three to four week intervals. Drenching soil beneath host plants during the August adulticide application may help reduce larval populations.

Clearwing moth **borers** are common in ash, dogwood, flowering fruit trees, lilac, oak, and rhododendron. Flatheaded borers (adults are called metallic wood borers) are common in oaks, white barked birches, and other stressed hardwoods. Borer larvae cause damage by feeding beneath bark, disrupting movement of water and sugars, destroying the cambium (the cells that give rise to lateral growth), and reducing structural integrity.

#### Using borer traps

Clearwing borer presence and flight periods can be monitored with pheromone traps. These cost-effective clearwing borer monitoring traps are available from: Trécé, Incorporated, P.O. Box 5267, Salinas, CA 93915; Great Lakes IPM, 10220 Church Road N. E., Vestaburg, MI 48891; Scentry Monitoring Products, P.O. Box 426, Buckeye, AZ 85326-0090.

A four trap kit costs about \$35 and will be efficient to monitor clearwing moths throughout your service area for an entire year.

A single, thorough-coverage bark spray of Dursban or lindane, 10 to 14 days after first male moth capture, will provide season long control of most clearwing moth borers.

Three applications of bark/foliage sprays with Turcam/Dycarb, Dursban, or lindane are required to control flatheaded borers.

The first application should be made just prior to first adult emergence (some time in May). Bark and foliage should be sprayed because adults feed on leaves for several days before they begin egg production.

LM

*"With a Wells Cargo Behind... You Never Look Back"*



28 FT. WELLS CARGO EXPRESS WAGON

#### ALL YOUR GEAR...

#### SECURE, ORGANIZED AND READY TO ROLL

We can say, "We build the best". Our specifications sheets will back that up. But why else should you consider Wells Cargo? How about:

- Factory Service Facilities - GA, IN, TX, UT.
- US Wide Dealer & Service Network.
- A Product Designed & Built for 15 Yrs. Hard Service, and More.
- Second-to-None 3 Yr. Warranty Coverage.
- Full Line Ball-Hitch Units 6" - 32" and Up.
- Full Line Fifth Wheel Units 20' - 40' and Up.

CATALOGS  
SPECIFICATIONS

CALL

1-800-348-7553  
SAY YOU SAW IT IN  
LANDSCAPE MGT.



**WELLS CARGO**

**SINCE  
1954**

WELLS CARGO, INC. P.O. BOX 728-837 ELKHART, IN 46515

Circle No. 161 on Reader Inquiry Card

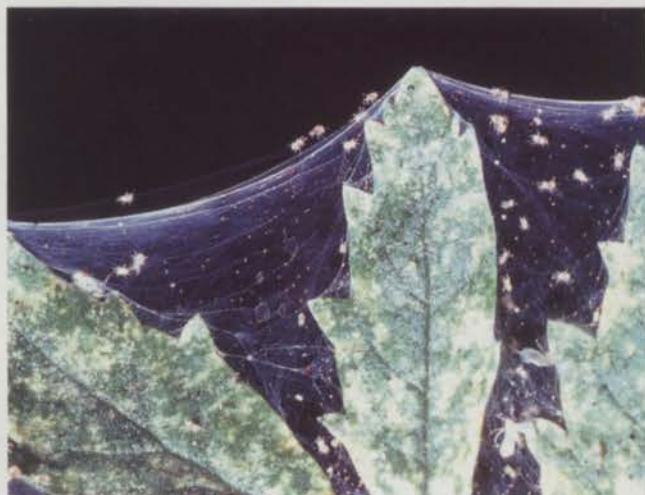
# SUMMER/FALL CONTROL OF ORNAMENTAL PESTS

Drought conditions have had a great impact on pest populations. Early detection is the key to successful control at this time.

by J. R. Baker, Ph.D., and D. G. Nielsen, Ph.D.



Plants infested with armored scales should be sprayed after all crawlers have hatched. The only way to determine when this has occurred is to check for crawler hatch and to overturn female coverings to make sure eggs are no longer present.



Woody plants, such as some euonymus varieties and roses, are frequently infested by two-spotted spider mites and tumid mites. These pests are dispersed on air currents and may appear suddenly in large numbers during hot, dry weather.

**T**he summer season (July through September) is when many of the most damaging landscape pests get down to serious business. Mimosa webworm, bagworm, fall webworm, Japanese beetle adults and second generation elm leaf beetle sometimes become common in early summer. All of these pests should be controlled when larvae are small to minimize damage and to maximize effectiveness of the insecticidal spray.

These pests are known as defoliators. This group includes caterpillars, which can be controlled with BT or one of the conventional products listed previously (under defoliators in spring).

Insecticide application by mist-blower, though cost effective, may result in unacceptable drift of sprays to neighboring properties. In addition, they should not be used when it's windy.

### Beetles prevalent

Japanese beetle adults feed on many kinds of trees, shrubs and roses in July and August. They are most easily controlled with weekly sprays of Sevin, Turcam/Dycarb, or one of the synthetic pyrethroids.

Area-wide grub control is the most effective way to reduce the number of Japanese beetle adults locally, thereby minimizing defoliation of nearby woody plants.

Second generation elm leaf beetles can cause significant defoliation if heavily infested trees are not sprayed or bark-banded with Sevin or a synthetic pyrethroid when first generation larvae begin to descend tree trunks.

Birch leafminer can be controlled during summer if trees are sprayed when second or third generation adults are mating and ovipositing. Remember, after egg laying has occurred and mines have begun to develop, only a systemic material like Orthene or Cygon will control leafminers.

Crawlers of several soft scales (Fletcher, cottony maple, cottony maple leaf, pine tortoise, wax and tulip tree) hatch in late June or early July

## INSECTICIDE/MITICIDE DIRECTORY FOR LANDSCAPE USES

COMMON NAME	TRADE NAME	COMPANY	USES
acephate	Orthene	Valent	aphids, bagworms, black vine weevil, cankerworms, eastern tent caterpillar, fall webworms, lace bugs, leaf rollers, scales, webworms.
<i>Bacillus thuringiensis</i> (Bl, BT)	Dipel SOK BT Thuricide	Abbott Nor-Am Sandoz	bagworms, cankerworms, fall webworms, gypsy moth, lo moth, loopers, mimosa webworm, cleander moth, omnivorous leafroller, saddleback caterpillar, tent caterpillars, tobacco budworm.
bendiocarb	Ficam Dycarb Turcam	Nor-Am Mallinckrodt Nor-Am	bagworms, black vine weevil, cankerworms, eastern tent caterpillar, fall webworms, Japanese beetles, momosa webworm, yellownecked caterpillar.
bifenthrin	Talstar	FMC	aphids, bagworms, black vine weevil, caterpillars, fall webworms, Japanese beetles, lace bugs, leafhoppers, leafminers, leaf rollers, loopers, mealybugs, spider mites, whiteflies.
carbaryl	Sevin	Rhone-Poulenc	bagworms, cankerworms, eriophyid mites, Japanese beetles, June beetles, lace bugs, leafhoppers, leaf rollers, mealybugs, sawflies, scales, tent caterpillars.
chlorpyrifos	Dursban	Dow	aphids, bagworms, clearwing and flatheaded boreis, eastern tent caterpillar, fall webworms, leafhoppers, lilac borer, mealybugs.
fenitrothion	Sumithion	Sumitomo	fall webworms, mealybugs, southern red mites.
fluvalinate	Mavrik	Sandoz	aphids, caterpillars, leafhoppers, lygus bugs, mites, whiteflies.
lindane	Lindane	Drexel	borers, lace bugs, leafminers, spittlebugs.
malathion	Malathion	Cyanamid	aphids, bagworms, Japanese beetles, lace bugs, mealybugs, scales.
methoxychlor	Mariate	Kincaid Enter.	cankerworms, Japanese beetles, leafhoppers, tent caterpillars.
oil	Hort oils etc.	several	scales, especially armored scales, mealybugs, red spider mites, whitefly larvae.
oxamyl	Vydate	Dupont	aphids, black vine weevil, Japanese beetles, leafhoppers, leafminers, mealybugs, mites, scales, whiteflies.
oxythioquinox	Morestan	Mobay	mites, mite eggs, whiteflies.
phosmet	Imidan	ICI Americas	aphids, cankerworms, eastern tent caterpillar, fall webworms, Japanese beetles, leaf tiers, mealybugs, mimosa webworms, woolly apple aphid, woolly beech aphid.
propargite	Ornamite	Uniroyal	spider mites.
soap	Insecticidal	Safer, Inc.	aphids, adelgids, balsam woolly aphid, Cooley spruce gall aphid, mealybugs, pine needle scale, psyllids, sawflies, spider mites, spruce spider mite, spruce woolly aphid, whiteflies.
trichlorfon	Dylox, Proxol	Mobay, Nor-Am	bagworms, leafminers, lygus bugs, stink bugs, webworms.

SOURCE: Drs. Baker and Nielsen

(up to a month earlier in the South).

Crawlers and settled nymphs are susceptible to many scalcicides, including Sevin, Orthene, diazinon, Dursban, Turcam/Dycarb, and synthetic pyrethroids in early July. A single, thorough-coverage, hydraulic spray should provide excellent control.

### Scale vulnerability

Settled first nymphs and other nymphal stages of soft scales are vulnerable to contact insecticides because they are not protected by cast skins and wax. Sprays to control soft scales should always be applied after all eggs have hatched to minimize the impact of pesticides on lady beetles

and other predatory insects, to minimize insecticide usage and to maximize control.

Second generation pine needle scale, euonymus scale, and white peach scale crawlers hatch during early July through the first of August. Two sprays at a 10 to 14 day interval may be required to control pine needle scale and white peach scale because crawlers hatch over a two to three week period.

Summer generation of euonymus scale crawlers hatch over an even longer period, so three applications at 10-day intervals are required for adequate control.

Aphid infestations should be controlled before they are abundant

enough to produce copious amounts of honeydew or do irreversible damage to leaves. If aphids are allowed to build up in high numbers, plant growth may be distorted and leaves may fall prematurely.

Once honeydew and sooty mold are present they may persist long after aphids have been controlled by pesticides or natural enemies. Also, honeydew attracts yellowjackets and other stinging wasps, creating an additional nuisance.

Most kinds of aphids are vulnerable to contact sprays whenever they are active.

Spider mites can be controlled whenever they are active by spraying twice at a 5-day (South) or 10-day (North) interval. If trees are receiving repeated applications of Sevin to control other insects, be especially watchful for mite buildup.

### Control of mites

Sevin selectively kills natural enemies of mites, thereby contributing to increases in spider mite population density.

Woody plants like some euonymus varieties and roses are frequently infested by two-spotted spider mites and tumid mites. These pests are dispersed on air currents and may appear suddenly in large numbers during hot, dry weather. When detected in potentially damaging numbers, they should be controlled as previously mentioned.

The second and third applications to control black vine weevil adults should be made in July and August. In the South, Japanese weevil and Fuller rose beetle can be controlled with Orthene as a spray and drench in July. A single spring application will not control black vine weevil or other weevils that attack landscape plants.

### The injection option

White barked birches infested with bronze birch borer can be controlled during the summer by injecting trees with Inject-A-Cide B (Bidrin) using microinjection technology developed by the J.J. Mauget Co. Installation must be done by an experienced professional.

This is an extremely effective stop-gap measure that can be used to save infested birches that are diagnosed as infested after it is too late to begin bark/foilage sprays in spring. Infested birches should be watered thoroughly and weekly during summer and fall droughts and fertilized in the fall after the first hard frost. The following year, bark/foilage sprays should be used as indicated earlier.

Injection should not be used annually on a preventive basis.

The peachtree borer (a clearwing moth) can be controlled with a single application of Dursban or lindane in late June (in the North) or late August (in the South). The second application of Dursban or lindane for control of lesser peachtree borer (also a clearwing moth) can also be made at this time to protect infested ornamental flowering fruit trees.

## FALL

### (September-October)

The defoliators Mimosa and fall webworms reach their highest population density and cause most defoliation during late summer and early fall. They should be controlled as soon as first generation larval webs are detected in early summer. However, both pests are still susceptible to larvicides in late August and early September. If Bt is to be used, it must be applied when the caterpillars are small to achieve desired results.

Magnolia and tulip tree scale crawlers are produced in late August and early September. Infested trees should be sprayed when goldenrod is in full bloom (early September). A single, thorough-coverage, hydraulic

spray with one of the aforementioned scalicides will provide excellent control. Both magnolias and tulip trees can be severely stunted or even killed by heavy infestations of these pests.

Galls on spruce turn brown and open in August and September. After galls open, adelgids are vulnerable to contact insecticides. Adelgids on spruce, Douglas fir, and pine remain

## Using pesticides judiciously is top priority

We all share the responsibility to manage pesticide use more wisely. We can do that by following these steps:

- **Use insecticidal sprays** only after determining that a pest species is present at a density that will cause plant damage if the infestation is ignored and the pest is in a stage vulnerable to pesticide treatment.

- **Treat only infested plants** in the landscape rather than spraying all woody plants on the property. This is a biologically and financially rational approach, because most kinds of plants are resistant to most insect or mite pests.

- **Make the effort** to continually

inspect your properties for pest problems. By doing so it's more likely that only a small part of a plant or a single plant will be infested when the pest's presence is first detected.

As more tree care specialists begin to adopt this process of landscape management and pest control, use of pesticides for managing our precious urban and community tree populations will be reduced, pest control will become more effective, the acquisition of resistance to insecticides by pests will be lowered and beneficial insects and mites can assume a larger role in maintaining pest species below damaging levels. □



# “Who Would've Thought Just One

Duosan® broad-spectrum fungicide combines both contact and systemic ingredients to kill and prevent a wide range of diseases on turf, trees, shrubs, and flowers.

Duosan goes to work immediately, and keeps on working, giving you immediate curative disease control plus preventive

activity for up to two weeks. And the synergistic action provides

a higher level of disease control than would be achieved by using

#### DUOSAN CONTROLS MAJOR TURF DISEASES

Dollar Spot	Fusarium Patch
Anthracnose	Leaf Spots
Brown Patch	Red Thread
Copper Spot	Rust





The peachtree borer (a clearwing moth) can be controlled with a single application of Dursban or lindane in late June (in the North) or late August (in the South).

vulnerable to insecticidal sprays until the following spring when new buds open.

Attempts to control **root weevil** larvae should be made in early September or October. A single drench with Turcam/Dycarb should be effective against larvae established in soil surrounding roots of field plants. Turcam/Dycarb, Orthene, or Furadan 4F

can be used to control larvae established in containers, using one pint of solution per gallon of container volume.

#### Maintenance important

The best way to minimize insect damage is to maintain healthy trees and shrubs. Trees should be planted at sites where they can be expected to

survive and thrive, and they should be watered during the first year after planting and subsequently whenever soil moisture becomes low. Proper pruning, fertilization, mulching, and aerification will promote plant vitality, helping trees and shrubs to help themselves against opportunistic pests.

When a pest is detected on a valuable landscape plant, it must be properly identified, its vulnerable stage(s) determined, control practices learned and a determination if direct control measures are warranted. If intervention is justified, the pest should be controlled with minimal impact on non-target organisms.

Remember, coverage and timing are often more important than the pesticide chosen for an insect or mite control program. In all cases, read the label on the pesticide container and follow all instructions to make sure you comply with the law.

Rational pesticide use does not constitute a threat to the quality of our urban environment. Informed landscape managers can use a combination of horticultural practices and pesticidal treatments to enhance the vitality and quality of our urban and community forests. **LM**



# Fungicide Could Do So Much."

either ingredient separately.

So you save all the time, labor and material costs of applying separate products. And you achieve

real control over a wider range of turf and ornamental disease

problems with just a single product—Duosan.

Contact your

Sierra distributor today and order Duosan. Or call us toll-

free at 1-800-492-8255.

**SIERRA**  
Tournament Condition  
Every Day

#### DUOSAN CONTROLS MAJOR ORNAMENTALS DISEASES

Anthracnose	Stem & Twig Blight
Blackspot	Downy Mildew
Flower Spot & Blight	Powdery Mildew
Leaf Spot & Blight	Scab and Rust



Circle No. 152 on Reader Inquiry Card