

# ATHLETIC TURF

**LOTS OF HOLES...**Fifty-three cleat marks per square foot. That's what you should expect if you have a heavy-traffic football field. That's the number of holes put into a professional football field between the hash marks, according to Sports Turf Managers Association president **Steve Cockerham**. Of course, because the hash marks are closer together in professional football than in college and high school, that number would be high for most fields. The answer to these high-wear areas? "The new ryegrasses just may be something that we can consider as an athletic turf, at least here in Southern California," Cockerham said at an STMA meeting in Anaheim recently.

**CHANGES FOR THE CHIEFS...**Chip Toma has been named head groundskeeper for the Kansas City Chiefs, effective July 1. Toma takes over from his father **George Toma**, who will remain as head groundskeeper for the Royals and also consult for the Chiefs. George will also be doing more consulting and speaking nationwide. "I'm definitely going to finish my career with the Royals," he promises. "They've treated me like a king."

Chip visits the Orient in August to help the Asian Games Committee and conduct athletic turf seminars in Hong Kong and Taiwan. "China is hungry for information," says Chip. "They're competent people, and they want nice fields, but they don't yet have the know-how or proper equipment."

**BRONCOS SEED NEW FIELD...**If all goes well, the Denver Broncos' new practice field will begin to take seed sometime in mid-July. **Ross Kurcab**, practice field manager, will use a 70/30 blue/rye turf mix after construction crews install an underground heating system. "The bluegrass comes through the winter better," says Kurcab, "and the rye gives us the aggressiveness we need. Our goals for this field are safety and playability." The team expects to be using the new practice field and facility by March of 1990.

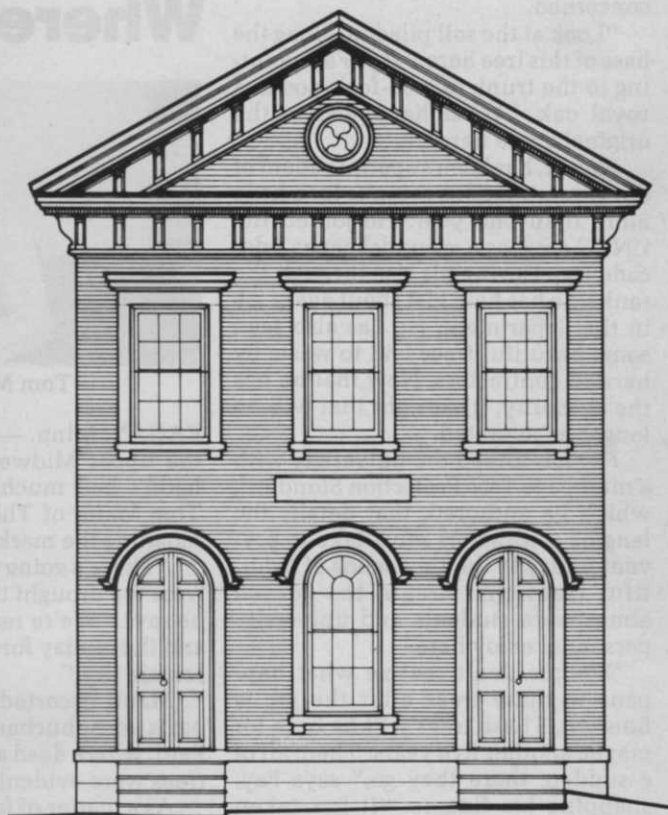
The mix includes Touchdown, Challenger, Columbia, 834, Del Ray and All\*Star.

# PRESERVATION PLAN ON IT

Planning on restoring a house, saving a landmark, reviving your neighborhood?

No matter what your plans, gain a wealth of experience and help preserve our historic and architectural heritage. Join the National Trust for Historic Preservation and support preservation efforts in your community.

Make preservation a blueprint for the future.



SOUTHPORT SAVINGS BANK, SOUTHPORT, CT.



Write:

**National Trust for Historic Preservation**  
Department PA  
1785 Massachusetts Ave., N.W.  
Washington, D.C. 20036