

PROJECT PROFILE



Kesterson preserved several trees at this Oregon residence, which create a focal point and balance the front entry.

Sculpting The Stratford

Every once in a while, a designer is offered the ideal project.

by Will Perry, managing editor

In many ways, landscape designer Daniel L. Kesterson couldn't have asked for a better assignment than to landscape The Stratford, a West Linn, Ore. residence to be featured in the summer house show, *Tour of Elegance*.

There was a nice budget to work with. About \$70,000 worth of

landscaping had been allotted for the 16,000 sq. ft. lot. Also, because the home was to serve as a model for a local developer, Kesterson was given a great deal of freedom in choosing and implementing his design.

There were however, some serious deficiencies that needed attention. For example, the architect

had miscalculated the site elevations on the downhill side of the house, leaving 10 feet of the foundation exposed. Also, more than eight feet of earth washed into the street off the house's north facade.

Kesterson, a designer with Drake's 7 Dees Nursery & Landscaping, Portland, responded to these



yard and into a pool at the entry area. The water is generated through the stream via a submersible pump and cascades over stones specially selected and placed by Kesterson. Invisible from the street, the stream "is a nice surprise when you come around the corner to the entrance," says Kesterson.

He handpicked undamaged, natural-looking stones that have mosses in place for the streambed. "The stones should be shaped to fit into the flow of the stream." The larger stones were installed by using gunite and the smaller stones were placed later. A second water feature is located next to the back patio. It is a three-level, 40-gallon pool that operates via a remote pump. Its placement beneath a kitchen window creates a trickling water sound "while preparing a gourmet's delight," says Kesterson.

Concerning the front of the house, Kesterson said he was fortunate that the three large Japanese maples and Douglas firs were preserved as they provide a balance between yard and house and establish a relationship with the deciduous trees in the area. Also in the front yard is a nine-foot Aristata pine that was brought in from another of the company's sites.

"I used several different grasses around this area and I feel it really blends in well. It creates the natural feeling I was looking for.

"There's a noticeable trend in the area to implement perennials and create the feel of an English garden," says Kesterson of the numerous varieties of perennials in and around the front tree bed. These include Fountain grass, Purple Noose Stripe, White Yarrow and Baby's Breath.

The backyard features a formal, three-level rose garden where 10 varieties of hybrid-T roses are in blossom. "The three garden levels in the backyard presented a classic opportunity to use roses. After all, this is the Rose City," says Kesterson, adding, "Overall I'm very happy with the way the project turned out."

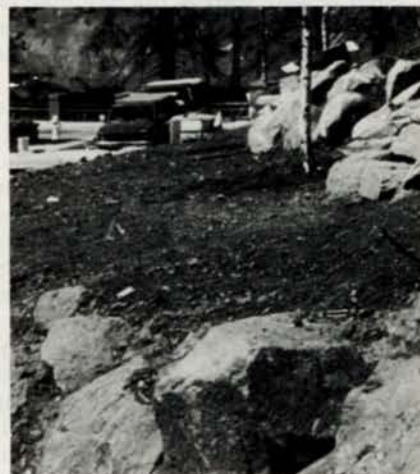
challenges by creating an elegant, functional landscape that solved the design flaws while providing the intimate, private setting the house and neighborhood demanded.

"The most cost-effective and efficient way to bridge the gap between the foundation and the ground level was to bring in a number of boulders from another site we were involved with across the Columbia River," says Kesterson. The boulders, weighing as much as 5,000 pounds each, were laid in by back hoe at the base of the house and along the sidewalk. The walls were complemented by a brick wall that levelled the ground along the house entrance.

Perhaps the most unique feature of the landscape is an artificially created stream that runs through the



This "Ottercrest" bronze sculpture comes into view as you near the front entry. It is placed close to the stream, which is also invisible from the street. An excellent view of the stream is from the Stratford's living room.



Boulders as large as 5,000 pounds each were laid in by back hoe to create a level area at the front entry. LM