

DISEASE CONTROL

(WARM-SEASON)

Robert Haygood, Ph.D. and Walker Miller, Ph.D.

Trade Names for the Common Turf Fungicides

Common Name	Trade Name*
anilazine	Dyrene
benomyl	Tersan 1991, Benlate
chloroneb	Terraneb SP
chlorothalonil	Daconil 2787
etridiazole	Koban, Terrazole
fenarimol	Rubigan
iprodione	Chipco 26019
maneb	Dithane M-22 Special
mancozeb	Fore, Tersan LSR, Dithane M-45, Manzate 200 Flowable, Penncozeb
metalaxyl	Subdue
PCNB	Terraclor, Turfcide
propiconazole	Banner
propamocarb	Banol
thiophanate	Cleary's 3336
thiophanate-methyl	Fungo 50
triadimefon	Bayleton
vinclozolin	Vorlan

*The mention of a product does not constitute a recommendation or an endorsement, and discrimination by the Clemson University Cooperative Extension Service is not implied by the exclusion of any comparable product. Each specific label is the final authority on application rates and uses.

Turfgrass Disease Control

Read and follow label directions closely

Fungicide*	Product Rate/1,000 sq ft	Fungicide*	Product Rate/1,000 sq ft
Brown Patch			
anilazine 50WP	4-8 oz	iprodione 50WP	1.5-2 oz
benomyl 50WP	2 oz	maneb 80WP	3-8 oz
chlorothalonil 75WP	2-8 oz	mancozeb 37%	5-14 fl oz
chlorothalonil 29.6%	8-12 fl oz	mancozeb 80WP	4 oz
chlorothalonil 40.4%	3-11 fl oz	PCNB 75WP	3-16 oz
triadimefon 25WP	1-2 oz	10G	2-7.5 lb
propiconazole	1-2 fl oz	thiophanate 50WP	1-2 oz
fenarimol 50WP	4-8 oz	thiophante-methyl 50WP	2 oz
Dollar Spot			
anilazine 50WP	4-8 oz	fenarimol 50WP	2-4 oz
benomyl 50WP	1 oz	iprodione 50WP	1.5-2 oz
chlorothalonil 75WP	2-8 oz	maneb 80WP	6-8 oz
chlorothalonil 29.6%	8-12 fl oz	mancozeb 37%	10-14 fl oz
chlorothalonil 40.4%	3-11 fl oz	mancozeb 80WP	6-8 oz
triadimefon 25WP	1-2 oz	propiconazole	1 fl oz
vinclozolin 50WP	2 oz	thiophanate 50WP	1-2 oz
		thiophante-methyl 50WP	1-2 oz
Melting out, Helminthosporium Leaf Spot			
anilazine 50WP	4-6 oz	iprodione 50WP	1.5-2 oz
chlorothalonil 75WP	2-8 oz	maneb 80WP	3-8 oz
chlorothalonil 29.6%	8-12 fl oz	mancozeb 80WP	4 oz
chlorothalonil 40.4%	3-11 fl oz	mancozeb 37%	5-14 fl oz
Pythium Blight			
chloroneb 65WP	4 oz	metalaxyl 2E	1-2 fl oz
etridiazole 30WP	2-8 oz	propamocarb 6E	1.33-4 fl oz

*Current recommendations of Clemson University Cooperative Extension Service. The mention of a product is not an endorsement, and discrimination by the Clemson University Cooperative Extension Service is not implied by the exclusion of any comparable product.

Each specific label is the final authority on application rates and uses.

continued

Turfgrass Disease Control (Cont.)

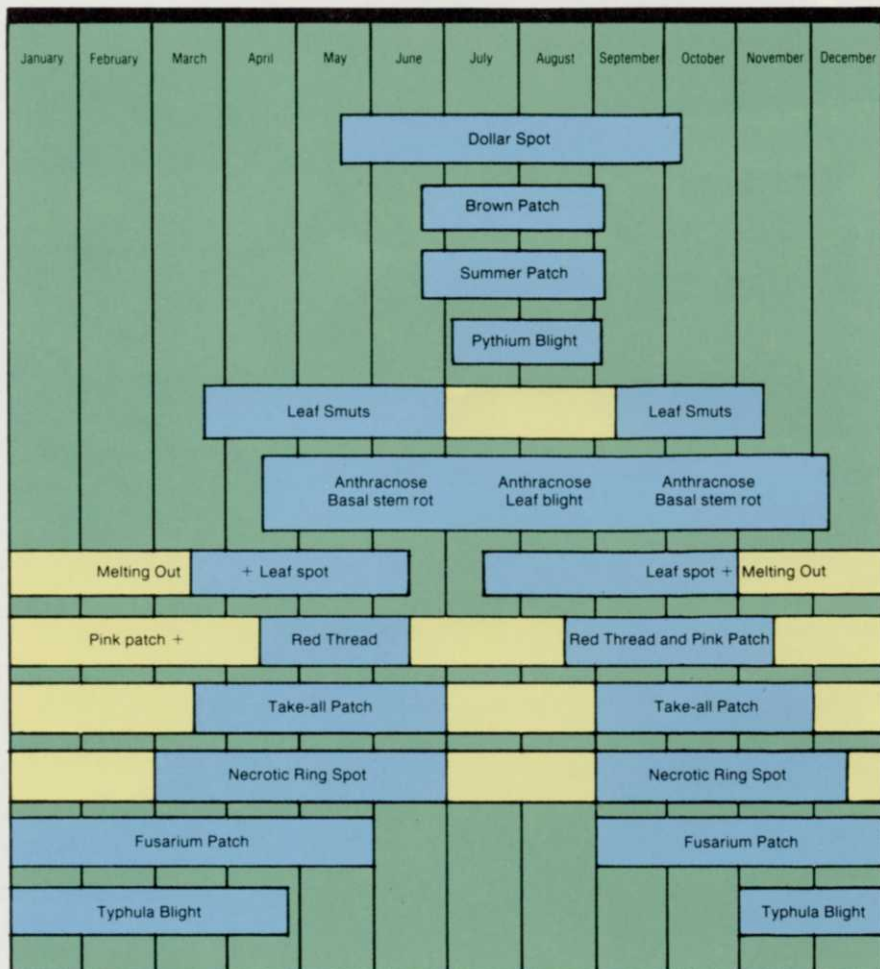
Read and follow label directions closely

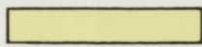
Fungicide*	Product Rate/1,000 sq ft	Fungicide*	Product Rate/1,000 sq ft
Rust			
anilazine 50WP	4-8 oz	maneb 80WP	3-8 oz
propiconazole	1-2 fl oz	mancozeb 37%	5-7 fl oz
triadimefon 25WP	1-2 oz	mancozeb 80WP	4 oz
Fairy Ring			
Vapam			
<i>see label for detailed instructions</i>			
Powdery Mildew			
triadimefon 25WP	1-2 oz	propiconazole	1-2 fl oz
Gray Leaf Spot			
chlorothalonil 75WP	2-8 oz		
chlorothalonil 29.6%	8-12 fl oz		
chlorothalonil 40.4%	3-11 fl oz		
Slime Mold			
None recommended.			
Easily controlled by cultural methods.			
Spring Dead Spot			
fenarimol 50w	1-2 oz	propiconazole (calif only)	1-2 fl oz
St. Augustine Downy Mildew			
metalaxyl	see label		
Anthracnose			
propiconazole	1-2 oz	triadimefon 25WP	2 oz


*Current recommendations of Clemson University Cooperative Extension Service. The mention of a product is not an endorsement, and discrimination by the Clemson University Cooperative Extension Service is not implied by the exclusion of any comparable product.
Each specific label is the final authority on application rates and uses.

(COOL-SEASON)

Common Diseases of Cool-Season Turf




Persistent symptoms often still visible.


Pathogen most active.