

PRODUCTS

Flood bubbler nozzle installs on pop-ups

Toro's new PC Flood Bubbler nozzle can be installed on a pop-up sprinkler. It takes advantage of pop-up features



like safe ground-level installation and smooth retraction when not in use.

The nozzle allows even flow of water from 30 psi to 75 psi, with no effect on performance from lateral

line friction loss. The PC Flood Bubbler is available in ¼, ½ and 1 gallon-per-minute flow sizes.

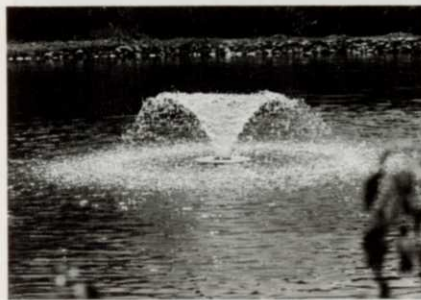
Circle No. 195 on Reader Inquiry Card

Water aerator line gets product entry

Barebo has added the 175 Sunburst model to its product line of floating mechanical aerators.

This latest Otterbine comes equipped with 50 ft. of underwater power cable and a standard 115-volt plug.

The 175 Sunburst was designed for use in small water settings. It needs a minimum operating depth of just 13 in. A spray pattern of five feet in diameter may be obtained. Ideal for small

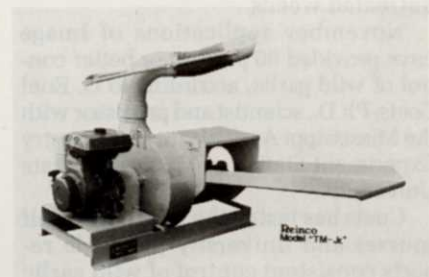


ponds with landscape architecture applications, the 175 Sunburst provides aesthetic water quality management.

Circle No. 196 on Reader Inquiry Card

Power mulcher can throw 1½ tons of mulch per hour

The TM-Jr. portable power mulcher from Reinco, Inc. is powered by a Ka-



wasaki 8.5 hp air-cooled gas engine, and can blow hay or straw mulch at a rate of 1½ tons per hour to distances of 35 feet. With an optional flexible hose, that range can be increased to 100 feet.

The introductory price of the TM-Jr. is \$4000.

Circle No. 197 on Reader Inquiry Card

The Advanced System for

Billy Goat's TR Truck Loader System is a complete lawn maintenance system that makes fall leaf cleanup easy. Call us today and find out how your lawn service crew can use these four pieces of equipment to clean up in record time.



**BILLY
GOAT**
INDUSTRIES, INC.

P.O. Box 308
Lee's Summit, MO
64063-0308
(816) 524-9666
Telex 91099770014



Use the backpack blower to remove debris from shrubs and hard-to-reach areas.



The suction sweeper is used for sweeping up leaves in outlying areas, away from the truck.

Absorbent sock system contains hazardous spills

The Haz Mat Pig from the New Pig Corporation, is an absorbent sock which sucks up and contains hazardous material spills. The system is designed to replace old methods of using loose clay to contain spills.

According to the company, a bucket of six pigs will absorb five gallons of acids, caustics or flammable solvents within five minutes. The saturated pigs can be returned to their resealable polyethylene bucket for temporary storage.

Circle No. 198 on Reader Inquiry Card

Four-wheel drive moves mower on steep terrain

The F2000 front mount mower from Kubota is designed for commercial use with a 20 hp diesel engine, four-wheel drive and rear wheel power steering. The four-wheel drive coupled with a front differential lock gives stability and traction on steep terrain.

A 60-inch mower is standard, with a 72-inch optional. The mower is



lifted hydraulically, with cutting heights from 1.5 to 4.0 inches. Independent front brakes allow for zero turning radius at mowing point by applying one brake.

Safety features include a safety start switch, a roll-over protective structure and a seat safety device which automatically shuts off the engine if the driver leaves the seat with the engine running.

Circle No. 199 on Reader Inquiry Card

Portable computer sensor monitors turf water needs

The ST27 from Standard Oil Engineered Materials Company allows a

golf course superintendent to base watering decisions on turf's actual water needs, reducing costs and preventing over- or under-watering.

The infrared thermometer measures turf temperature, sensors measure air temperature, humidity and solar radiation. A shoulder-pack computer calculates water needs based on these factors.

The monitor can maintain records for 135 areas on a golf course, sufficient information for 27 golf holes. Data can be transferred to a personal computer easily for permanent filing.



Circle No. 200 on Reader Inquiry Card

Lawn Maintenance

The TR Truck Loader System



Use the heavy duty wheeled blower to move large quantities of leaves toward the truck.



The intake hose vacuums leaves piled up around the truck and sends them through the four-bladed steel impeller in the truck loader. By crushing leaves and debris into small particles, the impeller greatly reduces bulk. This allows the truck to hold more debris and prevents operators from having to unload the truck as often.

Circle No. 104 on Reader Inquiry Card