

Poast for centipedegrass.

Besides improving the appearance of a centipedegrass lawn by removing annual grasses, Evans adds, Poast reduces the number of necessary mowings, saving on the total maintenance cost. The herbicide will not harm ornamentals, trees or shrubs growing near lawns, Evans says.

The first application will burn down the bahiagrass and suppress seedhead production for 40 days, he says. Due to the plant's extensive rhizome system, however, weak regrowth will occur. A second

application should be made soon after regrowth appears.

A rate of 1/2 fluid ounce of Poast and 3/4 fluid ounce of oil concentrate per 1,000 square feet is recommended.

"(Extension of the label to seedling centipedegrass) should be of interest to centipede sod producers who previously had to rely on pre-emergence herbicides for annual grass control," Evans says. "If a late-season frost occurs, the interaction of cold weather with pre-emergence herbicides can damage centipedegrass seedlings. With Poast, you can delay treatment

until any danger of killing frost has passed without sacrificing control."

PESTICIDES

Andersons announces 2,4-D-less herbicide

Amidst the controversy over the safety of 2,4-D herbicide, The Andersons has introduced a herbicide for broadleaf weed control which does not contain 2,4-D.

Hybrid Cide Break-Thru is designed to be used most effectively in conjunction with other herbicides, though it can be used alone on easy-to-kill weeds such as black medic, chickweed, clovers, cudweed and dandelions.

The Andersons made the announcement at November's Professional Lawn Care Association of America convention and trade show.

"We've been working on the product for eight years," says Joe DeLuca of The Andersons. "(The convention) was, we felt, an appropriate time to introduce it."

Response to the new herbicide was overwhelming, DeLuca says. Orders have been pouring in, with some lawn care companies planning to switch entirely to the non-phenoxy Break-Thru, while others will give it a trial run this year.

The company is expecting a large sales increase from the chemical division as a result, though DeLuca says it is too early to speculate on how much.

Dr. Ray Freeborg of Purdue University says, "The three-way combination of Break-Thru plus clorpyralid from Dow plus triclopyr appears to be the best non-phenoxy herbicide combination available."

Cost of the product, which, according to DeLuca, is the only non-phenoxy on the market that kills dandelions, will vary with quantity bought, and how it is purchased, either direct or through a distributor.

TURF

Tall fescues win shade tolerance test

Researchers have tried to study turf shade tolerance in controlled laboratory situations, but it can't be done accurately, says Dr. Paul Henderlong of Ohio State University.

"You cannot duplicate the variation in light intensity," Henderlong explained at this year's Ohio Turfgrass Research Field Day. "One minute it's under shadows, the next, there's a burst of light. That burst is more significant than constant light."

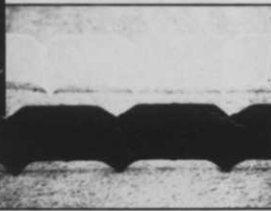
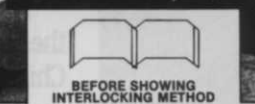
WE ARE ABOUT TO TURN THE PLASTIC LAWN EDGING INDUSTRY UPSIDE DOWN!

INTRODUCING NEW "EDGE LOCK™" THE SUPERIOR INTERLOCKING PLASTIC LAWN EDGING SYSTEM! (Patent Pending)

- *No trenches to dig
- *No connectors needed
- *New PVC construction



- *No stakes needed
- *No cutting to fit
- *One person installation



The new "Edge Lock™" interlocking lawn edging system, is unlike any lawn edging you've ever used before. We've eliminated those "other" edgings. For example, no more long strips to fumble with. Each "Edge Lock™" section is only 6 1/2" wide x 4 1/4" tall, and, each one locks inside the other, giving you the freedom to create any length you desire. And once it's locked in, it won't pull apart. Not to mention that any number of feet, or any configuration, can be easily installed by one person! There are no clumsy stakes to struggle with, and no time consuming trenches to dig. Edge Lock™ is self trenching and self supporting too! And since landscaping isn't just

"straight lines", Edge Lock™ edging goes around corners without a fight. You can form a complete 18" circle without bending or forcing because each Edge Lock™ section swivels inside the other so it won't hamper your creativity. A 20' section of interlocking pieces comes in a small box 10 1/2" x 7" x 5 1/4" that weighs 6 lbs., making it possible to transport thousands of feet in a small pickup truck! Edge Lock™ doesn't look like

those "other" edgings either, it has a distinctive new beveled appearance, in fact it's so attractive when installed, you'll want to incorporate it as an integral part of your overall design! Want more? How about competitive pricing, colors like black, ivory and green, taller pieces for softer soil, & high impact plastic construction. But then we could go on and on about the benefits of our new edging. If you would like to know more about Edge Lock™ the revolutionary new interlocking lawn edging system, call or write us for more information, and look for more innovations from the company that has been engineering quality products for over 35 years. (Patent pending).

EBERHART STEEL PRODUCTS CORPORATION / PLASTICS DIVISION

417 E. Jefferson Boulevard, Mishawaka, IN 48545-6594, (219) 259-2461, Ask for the Plastics Division

Circle No. 111 on Reader Inquiry Card

Ohio State University's natural shade study results—1986

Cultivars	Turf Density				Turf Quality
	23 April	26 June	15 July	13 August	13 August
Rebel tall Fescue	8.0	7.7	7.7	6.7	7.7
Falcon tall fescue	8.3	8.0	8.0	7.3	7.3
Olympic tall fescue	8.0	8.3	8.0	7.3	7.7
Pennlawn red fescue	6.7	6.0	6.7	6.0	4.3
Sabre rough bluegrass	8.0	6.0	7.0	4.7	3.0
Bristo Ky. bluegrass	8.0	8.0	7.7	6.7	7.0
Glade Ky. bluegrass	6.3	7.3	7.3	6.7	7.3
Baron Ky. bluegrass	5.7	7.7	7.0	6.7	7.0
Touchdown Ky. bluegrass	6.7	6.7	7.0	7.0	5.7
VA-70-139 Ky. bluegrass	7.3	8.0	7.7	7.0	7.3

Rating scale 1-9, with 9 = best. Average of three replications.

Henderlong implemented a study of turf varieties under naturally shaded conditions in 1983. The study has shown tall fescues to remain the healthiest under shade.

The plots have been maintained at a low fertility and a 2-inch mowing height, with no special treatments. For overall turf quality, Rebel and Olympic tall fescue received a 7.7 rating on a 0-9 scale (9 is highest). Falcon tall fescue, Glade Kentucky bluegrass, and VA-70-139 bluegrass were rated 7.3.

Sabre rough bluegrass and Pennlawn red fescue received the lowest ratings and had considerable fusarium problems.

Despite close ratings among some varieties of bluegrass and tall fescue, the fescues developed no disease problems, making them the best choice for shaded conditions.

Coming Next Month....

WT&T's annual look at the Top 50 Landscape Companies.

PROFESSIONAL!

COMMERCIAL BROADCAST SPREADER



CAN BE SHIPPED VIA UPS



Handle mounted on off trim control (optional)



Spread pattern with trim control!



Adjust both the pattern and product flow!



Spread pattern without trim control!



3-way height adjustment!

The best got even better! It was tough, but we've found a way to improve the best broadcast spreader on the market: first, add our patent pending trim control device* and, second, make the height adjustable for operator convenience. Best of all, both improvements are retrofitable to our classic CB-85.

Other features include: improved, hi-impact, rust free hopper; epoxy coated metal parts; cushioned hand grips; spring loaded on/off lever; 5/8" #304 stainless steel axle; heavy duty gears; ball bearing wheels with grease seals; 3/8" stainless steel agitator; hopper screen; more.

Manufacturers of millions of quality lawn spreaders since 1946.

Specifications subject to change without notice.

PSB Company

Manufacturers of millions of quality lawn spreaders since 1946.

555 West Goodale Street • P.O. Box 1089 • Columbus, Ohio 43216-1089 • (614) 228-5781

Circle No. 152 on Reader Inquiry Card