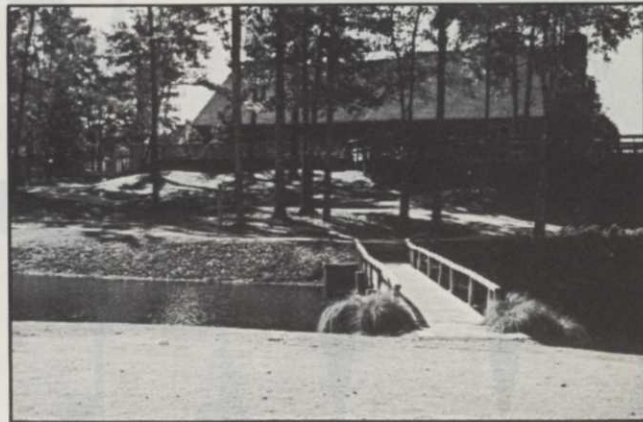


# WEEDS TREES & TURF

The Magazine of **LANDSCAPE MANAGEMENT**



28



34

**28 COVER STORY: WHERE WERE YOU IN '62?**

WEEDS TREES & TURF turns 25 this year. To celebrate the quarter-century mark, we take a look back and look toward the next 25 years in the turf industry. This month, the subject is chemicals.

**34 'I NEED A DRINK!'**

Many golf course superintendents could be uttering that phrase in the not-too-distant future. But it's not water they'll be drinking.

- 35 The Comeback
- 40 Making a Living
- 44 Slow Release, Fast Relief
- 48 Bentgrass Showcase

**56 LAWN AND LANDSCAPE FERTILIZATION**

Fertilizers have a definite impact on root growth, carbohydrate reserves and stress tolerance. The dedicated turf manager closely monitors his fertilizer application timing, rate and method.

**60 ENDOPHYTES: AN UPDATE**

In 1983, WEEDS TREES & TURF first reported on insect-resistant turf containing endophytes. Today, researchers are discovering more about the fungus.

**65 GCSAA SCHEDULE**

**66 1986 ARTICLE, AUTHOR INDEX**

**72 AN OUTDOOR ART MUSEUM**

Rich in tradition, Druid Ridge cemetery in Baltimore is a unique 230 acres. Its unique head landscaper could be the reason.

**80 DIVINE DIVISIONS**

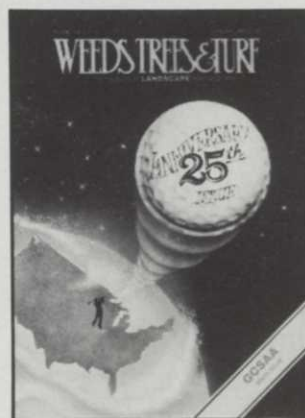
More and more, major companies are moving their division headquarters to country settings. Here's a look at what AT&T and Mobil Oil have done.

**88 PAY AS INCENTIVE**

Good salaries alone are not enough to motivate employees. Special incentives should be required for exceptional performance.

**DEPARTMENTS**

- 4 NEWS/TRENDS
- 6 GREEN INDUSTRY NEWS
- 92 JOBTALK
- 94 PROBLEM SOLVERS
- 96 LETTERS
- 102 PRODUCTS
- 116 CLASSIFIED
- 121 AD INDEX
- 122 OUTLOOK



Cover illustration by Joel Rogers

WEEDS TREES & TURF (ISSN 0043-1753) is published monthly by Harcourt Brace Jovanovich Publications. Corporate and Editorial offices: 7500 Old Oak Boulevard, Cleveland, Ohio 44130. Advertising Offices: 7500 Old Oak Boulevard, Cleveland, Ohio 44130, 111 East Wacker Drive, Chicago, Illinois 60601 and 455 East Paces, Ferry Road, Suite 324, Atlanta, Georgia 30305. Accounting, Advertising Production and Circulation offices: 1 East First Street, Duluth, Minnesota 55802. Subscription rates: \$25 per year in the United States; \$35 per year in Canada. All other countries: \$70 per year. Single copies (pre-paid only): \$2.50 in the U.S.; \$4.50 in Canada; elsewhere \$8.00; add \$3.00 for shipping and handling per order. Second class postage paid at Duluth, Minnesota 55806 and additional mailing offices. Copyright © 1987 by Harcourt Brace Jovanovich, Inc. All rights reserved. No part of this publication may be reproduced or transmitted in any form or by any means, electronic or mechanical including photocopy, recording, or any information storage and retrieval system, without permission in writing from the publisher.

POSTMASTER: Send address changes to WEEDS TREES & TURF, P.O. Box 6198, Duluth, Minnesota 55806-9898.

ABP ▽ BPA

**(HBJ)** A HARCOURT BRACE JOVANOVIH PUBLICATION