

# Weed and disease control for ornamentals



■ ■ *It's a time-saver and a labor-saver.* ■ ■

—Jimmy Collins  
Houston, Tex.

Because of the trend toward more complex and beautiful landscape designs, preventing weed encroachment in more and larger plant beds is becoming a higher priority of landscape managers everywhere.

Two factors are foremost in the landscape manager's mind when selecting the appropriate herbicide: safety to plantings and length of control. Safety because ornamental materials are a costly part of the landscape, and length of control because longer residual means fewer herbicide treatments.

Two products which have excellent safety margins and longer-lasting control of weeds in plant beds are Surflan and Treflan. Season-long control of grassy and broadleaf weeds in more than 150 species of ornamentals is possible with them.

Treflan is a granular formulation offering the most convenient and economical control of annual grasses and broadleaf weeds. Surflan is a liquid that can be sprayed around the base of established plants or broadcast over the top of plants. Surflan can be tank-mixed with other herbicides such as Fusilade, Poast, or Goal to control specific weed problems.

In areas where vegetation exists such as fence rows, sidewalks, and around trees, Surflan can be tank-mixed with Roundup for complete weed control. Roundup provides the knockdown required to kill the existing vegetation, and Surflan provides the residual control necessary to keep the susceptible weeds

from germinating for the entire season.

To treat 1,000 sq. ft., mix 3 oz. of Surflan A.S. (liquid measure) with 4 oz. of Roundup in 2 gal. of water. Spray the entire area to wet only, not to drip.

"We've used Surflan in combination with Roundup around trees," says John Luper, superintendent at Bardmoor Country Club, Seminole, Fla. "We've cut back considerably—perhaps as much as 20 to 30 percent—the number of times that we have to spray around trees and ditchbanks."

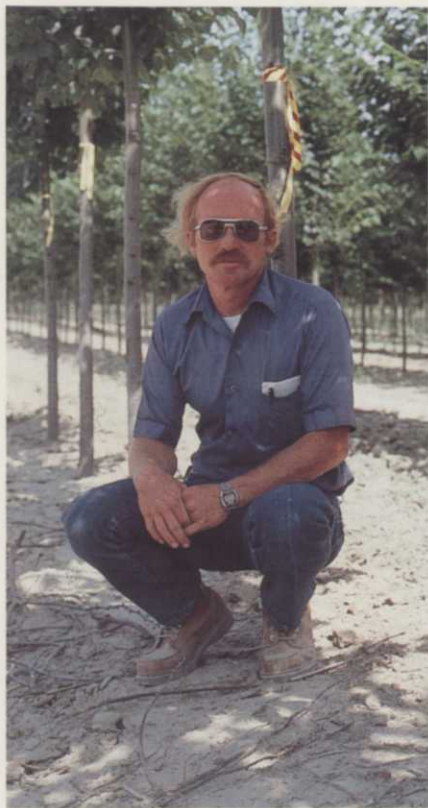
"I can't say enough about the product. It's a time saver and labor saver," says Jimmy Collins, operations manager for Earth Tone Development in Houston, Tex.

Collins applies Surflan around March 1 to ornamental beds. If weeds appear, he'll do a second application of Surflan and Roundup as needed. He also applies the mixture regularly in August.

In the past, Collins has applied Surflan at a rate of 2 qts. per acre, but has found better control with 4 qts. per acre. His crew has also discovered the Surflan/Roundup mix works well in expansion joints in concrete areas, although he still uses the product most frequently in ornamental beds.

In Whiteland, Ind., state-certified applicator Dave Jenkins of Maschmeyer Nursery uses the Surflan/Roundup mix for control between the rows of the nursery's 3 million trees. His goal is bareground control so there's no competition between the weeds and





■ ■ I'm real happy with it. It does a good job. ■ ■

—Dave Jenkins  
Whiteland, Ind.

trees for the soil's nutrients.

He sprays all 300 acres single-handedly. This is his fifth year using the mix.

"I'm real happy with it. It does a good job. We use 120 gallons a year and I've only got 20 left," he says. Jenkins says sometimes in the early spring he uses Surflan by itself and then mixes with Roundup later in the spring for post-emergent control.

He uses Surflan at the rate of 1 gal. per acre per year.

One of the most devastating diseases of ornamentals is powdery mildew. Locally systemic fungicides like Rubigan EC are rapidly absorbed and used by ornamentals to prevent and control powdery mildew.

Rubigan has been proven effective and economical for powdery mildew or roses, myrtle, lilacs and other popular ornamental plantings. Without damage to roses and ornamentals by powdery mildew, they remain as beautiful as they are popular.

Landscape plantings provide a valuable addition to the landscape. Controlling weeds and diseases in these plantings with Surflan, Treflan and Rubigan is necessary to maximize their beauty and value.

