

Balan[®] saves more money & more lawns.

Compare Balan[®] with any other preemergence herbicide, and you'll find there's not a more economical way to effectively control undesirable, troublesome weedgrasses like crabgrass, goosegrass, foxtail and others.

Balan or benefin is available in many formulations. Whether you choose a sprayable or a granular, you know you will get the same results—excellent weedgrass control at an economical price.

Effective turfgrass management doesn't have to be expensive. With Balan at work, both weedgrasses and your expenses tend to stop growing.

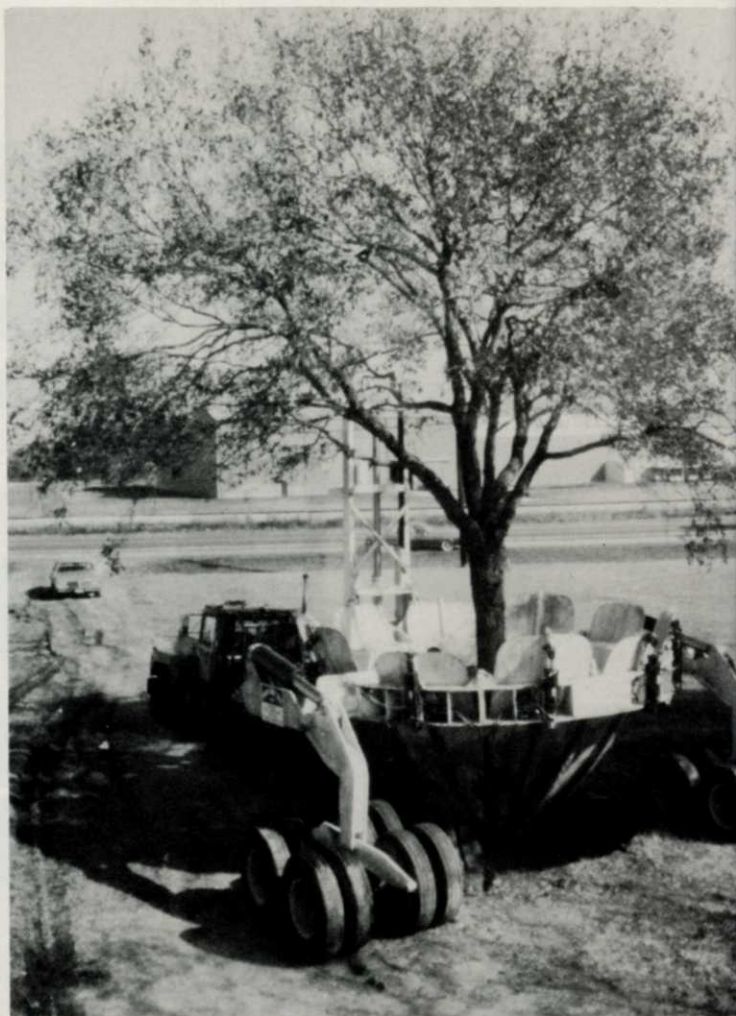
Balan

Balan[™] —
(benefin, Elanco
Products Company)

Elanco Products Company, a Division of Eli Lilly and Company, Dept. E-455, Indianapolis, IN 46285, U.S.A.



JOB TALK



Truck pulls Texas Tree Shovel with 40-foot-tall tree to new location.

Moving big trees Texas style

The massive hydraulic tree spade can move trees with 24-inch trunks, 60 to 70 feet tall.

Even Hurricane Alicia couldn't budge more than 1,000 large oaks in a housing development moved by the Texas Tree Shovel.

Tired of the labor costs and tedious root pruning associated with tree transplants? So was Al Korenek, who decided it was time to make transplanting easier for everyone.

Everyone would like to transplant full-grown trees and enjoy their aesthetic and protective values right away. But it's been easier to move younger specimens and wait for them to grow than moving mature trees with a huge ball of earth.

Korenek sat down and designed an all-hydraulic tree transplanter that can dig a cone-shaped hole 14 feet in diameter and 6 1/2 feet deep. The giant tree transplanter, dubbed the "Texas Tree Shovel," can handle 24-inch trunk diameters for trees 60 to 70 feet tall.

The patented system handles those massive root systems by pulling 10 pointed blades into the ground with hydraulic cylinders. The blades form a cone at the bottom of the hole and hold in roots and earth while three large hydraulic cylinders lift the tree and earth high enough for transport.

The shovel carries about 55,000 pounds of earth (not counting the tree) to the new site. A Mack tandem R 600 tractor powers the hydraulic cylinders and pulls the entire unit to the new planting site. In wet or unstable conditions the unit can be towed with a bulldozer or crawler loader coupled to a special tandem dolly using a fifth wheel.

Vermeer Manufacturing of Pella, IA, built and marketed the first shovel last January. It was put to the test that same month on Texas Arbor Day in Houston, where the Texas firm of Instant Shade Trees, Inc., moved a 20-inch caliper live oak tree.

The Texas Tree Shovel then moved on to Hanna-Barbera Land, where it transplanted several mature trees from neighboring property to strategic locations throughout the park. Ground conditions were so unstable in some areas that bulldozers were used to position the unit, but the results were successful.

The Texas Tree Shovel has also been used successfully to transplant 1,000 5-1/2 to 6-inch caliper live oak trees in a housing development. To date, all the trees survived and thrived after the move. Even Hurricane Alicia couldn't touch the new plantings, as they all withstood the high winds without support lines or other precautions.

While the first projects proved Korenek's invention worked, he also designed it to work anywhere. The 27-foot wide shovel can be dismantled and transported on two trailer trucks to any site in the country. The unit can also be assembled and used on the same day.

WT&T

And more golf courses.

The toughest battle on the golf course doesn't always involve the players. Sometimes it's the golf course itself versus weeds. Fortunately, turf managers and superintendents have an ally—Balan® preemergence herbicide.

Balan takes on the toughest annual weedgrasses like crabgrass, goosegrass, poa annua, and foxtail as well as any herbicide around. Yet it's still one of the most economical. And it's gentle to your turf. With those kind of credentials, it's easy to see why Balan's popularity continues to grow each year.

Golf course management isn't complete without economical, effective weedgrass control. And with Balan, that's par for the course.

Balan

Balan®
(benefin, Elanco
Products Company)

Elanco Products Company, a Division of Eli Lilly and Company, Dept. E-455, Indianapolis, IN 46285, U.S.A.

