

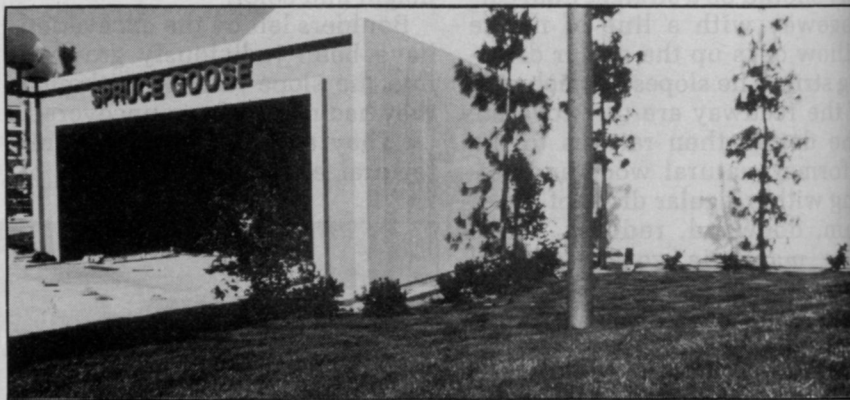
Sprucing up a roost for the Goose

How do you landscape the world's largest nest? Landscape Architect Ron Sidell was faced with that question when he was hired as a consultant to the \$200,000 landscape renovation project for the Queen Mary/Spruce Goose display in Long Beach, CA.

Howard Hughes' plywood plane was given a new home last spring when the Wrather Corp. erected a dome to display the mammoth aircraft. As part of a 10-year development improvement plan, the landscaping surrounding the dome, the Queen Mary dock and the English village setting was renovated.

The 20,000 square feet of turf at the site was bluegrass, but "We wanted to make it (the turf) public so people could picnic and relax under shade trees," Sidell says. "With the anticipated increase in traffic, we needed a hardier turfgrass than bluegrass."

Another consideration along the Pacific waterfront site was high winds coming inland. "These daily winds are so severe that we had to devise a special layout for our irrigation sys-



The Spruce Goose display at Long Beach CA. opened last May. A \$200,000 landscape renovation job complimented the "nest."

tem" to offset the drying out, Sidell recalls.

To meet those requirements he chose Southland Sod Farms' Marathon Sod for the new turf. Marathon has an extensive deep root system, Sidell notes, which complimented the irrigation system installed to offset those drying winds.

Sidell also incorporated a year-

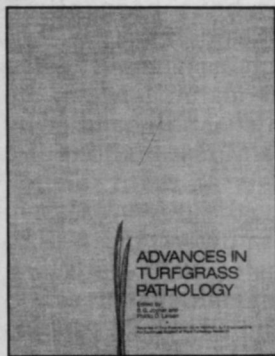
round color program for the foliage installed at the site.

Although the Spruce Goose flew only once, with the eccentric millionaire at the controls, its presence in Long Beach has brought 5-6,000 tourists in on an average weekday. Before the new 'nest' was built, the Queen Mary received that number of visitors on weekends.

WTT

Advances in Turfgrass Pathology

published by HARCOURT BRACE JOVANOVIICH PUBLICATIONS in cooperation with Dr. B. G. Joyner, Dr. P. O. Larsen and Chemlawn Corporation



This extensive volume contains chapters on:

- turfgrass diseases
- cool v.s. warm season pythium blight and other related pythium problems
- snow molds of turfgrasses
- fairy rings
- leaf spot of Kentucky Bluegrass in Minnesota
- initial and filed fungicide screening
- turfgrass disease resistance
- PLUS MUCH MORE!

\$27.95* (hardcover)

COPIES LIMITED — DON'T DELAY!

ADVANCES IN TURFGRASS PATHOLOGY is a compilation of more than 23 reports and discussions by the nation's leading turfgrass pathologists. Explore the diseases that attack turfgrass. Find out how to conquer the battle of turfgrass diseases.

KEEP CURRENT WITH NEW IDEAS ON HOW TO HANDLE TURFGRASS PROBLEMS WITH ADVANCES IN TURFGRASS PATHOLOGY.

\$27.95* hardcover
Quantity rates available on request.

Return this coupon to: Book Sales
Harcourt Brace Jovanovich Publications
One East First Street, Duluth, MN 55802
YES! Please send me _____ copy(ies) of ADVANCES IN TURFGRASS PATHOLOGY.

A check or money order for _____ is enclosed.

*Please add \$3.00 per order plus \$1.00 per additional copy for postage and handling.

Name _____
Address _____
City _____ State _____ Zip _____
Phone _____

Please charge to my Visa, Master Card, or American Express (circle one)
Account Number _____
Expiration Date _____
Please allow 6-8 weeks for delivery.

WTT 113