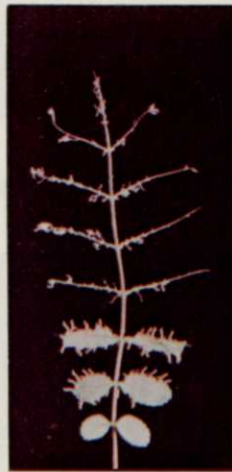




# Tree Insect Identification Quiz

Quiz yourself. Answers are on the next page.

A. \_\_\_\_\_ B. \_\_\_\_\_



C. \_\_\_\_\_

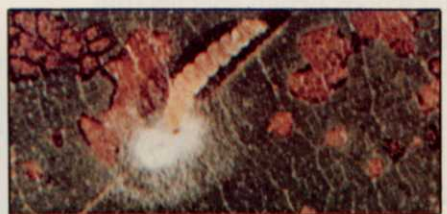


D. \_\_\_\_\_ E. \_\_\_\_\_ F. \_\_\_\_\_

G. \_\_\_\_\_



H. \_\_\_\_\_ I. \_\_\_\_\_ J. \_\_\_\_\_



K. \_\_\_\_\_ L. \_\_\_\_\_ M. \_\_\_\_\_ N. \_\_\_\_\_

# Landscape

blow in or be carried by other insects and birds or were missed early in the season, can explode and nullify all previous treatment. Use Sevin, Diazinon, Dymet, and Acephate on the crawler stage.

3. Fletcher Scale — Watch for

crawler stage at this time of year on prone plants and use Sevin, Malathion, and Acephate.

## II. Adelgids

1. Cooley Gall — This adelgid leaves the gall in late summer to

start a new life cycle or may return from fir trees if the alternate host of this pest is in the area. Good coverage of the new growth with Diazinon, Sevin or Malathion is important.

2. Eastern Spruce Gall — Similar in nature to the cooley gall, but activity is later so timing is important for the particular area.

## III. Leaf Feeders

1. Fall Web Worms — The second generation becomes very obvious at this time of year with extensive webbing of the foliage. Suppression can be obtained with Sevin or Methoxychlor.

2. Japanese Beetle — This colorful insect is destructive on many other plants. Weather conditions play an important role in these numbers. Control with Sevin or Methoxychlor will be dependant on local analysis.

3. Mimosa Webworm — Webbing similar to fall web worm where leaves are pulled together. Several generations, Sevin, Acephate, Diazinon

4. Oak Leaf Skeletonizer — Second Generation on Oak.

## IV. Borers

1. Locust Borer — A problem on black locust — Emergency occurs in the fall and egg laying is when golden rod in bloom. Lindane as a trunk protectant where a problem exists.

2. Peach Tree Borer — Mid-late summer treatment may be necessary on valuable plants. Use Lindane or Lorsban.

## Hahn SPRAY-PRO 44

Versatile! Multi-Use Vehicle . . . quickly converts to SPRAYER, SPREADER, AERIFIER, UTILITY BED



• 16 hp Kohler engine • Hi-flotation tires • 4-wheel stability • 3-speed transmission up to 11 mph. • Easy on, easy off attachments

### the sprayer . . .

160 gal. poly tank with jet agitation. 3-section folding boom for 18½ ft. coverage. Fingertip control of all spray system functions.

### the utility truck bed . . .

Reinforced steel, 1500 lbs. capacity. Converts to dump truck with addition of Hydraulic Package.



### the aerifier . . .

Cultivates a full 42 inch width. Cleanly penetrates to 3 inches, depending on soil condition. Optional Slicing Blades to open up the soil with a minimum of turf disturbance.

**Hahn** AG/TURF DIVISION  
1625 N. Garvin St. Evansville, IN 47711



### the spreader . . .

Precise rate settings for a uniform pattern. Top dress sand in 12 to 20 ft. swath, apply seed, fertilizer and lime 20 to 40 ft. Up to 500 lbs. per minute.

Manufacturing quality  
equipment since 1948

Some Dealerships available,  
Phone (812) 428-2025 Telex: 27-8429

Circle No. 122 on Reader Inquiry Card

## ANSWERS TO TREE INSECTS

- A. aphids
- B. eastern tent caterpillar
- C. euonymus scale
- D. pin oak sawfly
- E. mountain ash sawfly
- F. dogwood borer (larvae)
- G. mimosa webworm
- H. willow leaf beetle
- I. spruce mite webbing/damage
- J. fall webworm
- K. gypsy moth (larvae)
- L. oystershell scale
- M. pine tube moth damage
- N. birch lead skeletonizer