

The central feature of the Salem, Oregon, park system is a small river. The turf area around the river is periodically aerified to prevent compaction problems from foot traffic. Photo by Larry Kassell.

JUNE 1983/VOL. 22, NO. 6



Baseball field renovation, see page 28

22 Thatch Control by Core Cultivation

Complete removal of thatch may not be the most desirable way to solve thatch problems. Karl Danneberger of Michigan State University suggests coring and cultivating the cores with the thatch creates a hybrid thatch with improved characteristics. Disruption of the turf by thatch removal is lessened.

28 Giving New Life to Old Baseball Fields

Managers of baseball fields in the transition zone should get special benefit from this article by Professor Portz, of Southern Illinois University-Carbondale. Correcting drainage and compaction problems are preferred over building new fields. Portz gives tips to construction and maintenance of baseball fields.

38 Parks Stretch to Meet Field Demand

A survey of park superintendents reveals park budgets and staff have not matched the demand for playing fields. The superintendents report 40 percent allow sports leagues to perform some maintenance tasks. Field maintenance programs remain at utility only levels. Resources seem to be falling behind field needs.

40 The Orange Bowl After the Storm

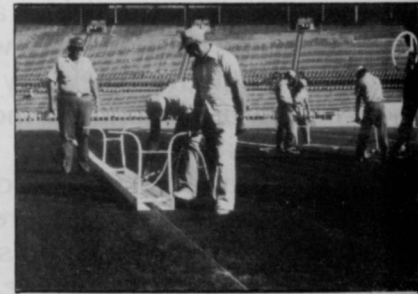
Millions of television viewers saw the New York Jets-Miami Dolphins playoff game on the rain-soaked Orange Bowl field. Field manager Dale Sandin discusses that day and the field's qualities.

46 New Vitality In Growth Regulators

Changing uses and objectives for growth regulators have added new life and a line of new products. Mowing reduction, seedhead suppression, and new products are covered by Purdue University expert on growth regulators, Dr. Ray Freeborg.

52 PGRs and Poa: Golf Course Trials

Many of the early kinks with growth regulators have been solved with rate and timing studies. Now golf course superintendents can use PGRs to reduce Poa annua seedheads and improve heat tolerance. Superintendents and researchers cite examples.



The Orange Bowl, see page 40.

DEPARTMENTS

Outlook	6
Green Industry News	8
Golf Update	10
Landscape Update	14
Government Update	16
Landscape Log	20
Problem Solver	64
Products	68
Classifieds	70
Advertiser Information	72

Robert L. Edgell, Chairman; Richard Moeller, President; Lars Fladmark, Executive Vice President; Arland Hirman, Treasurer; Thomas Grenev, Senior Vice President; Ezra Pincus, Senior Vice President; Pat O'Rourke, Group Vice President; Joe Bilderbach, Vice President; James Gherna, Vice President; George Glenn, Vice President; Harry Ramaley, Vice President.

WEEDS TREES & TURF (ISSN 0043-1753) is published monthly by Harcourt Brace Jovanovich Publications. Corporate and Editorial offices: 7500 Old Oak Boulevard, Cleveland, Ohio 44130. Advertising Offices: 757 Third Avenue, New York, New York 10017, 111 East Wacker Drive, Chicago, Illinois 60601 and 3091 Maple Drive, Atlanta, Georgia 30305. Accounting, Advertising Production and Circulation offices: 1 East First Street, Duluth, Minnesota 55802. Subscription rates: \$16 per year in the United States; \$20 per year in Canada. All other countries: \$45 per year. Single copies (pre-paid only): \$2 in the U.S.; elsewhere \$4.50; add \$3.00 for shipping and handling per order. Second class postage paid at Duluth, Minnesota 55806 and additional mailing offices. Copyright © 1983 by Harcourt Brace Jovanovich, Inc. All rights reserved. No part of this publication may be reproduced or transmitted in any form or by any means, electronic or mechanical including photocopy, recording, or any information storage and retrieval system, without permission in writing from the publisher. Microfilm copies of articles are available through University Microfilm, International, 300 N. Zeeb Road, Ann Arbor, Michigan 48106.

POSTMASTER: Send address changes to WEEDS TREES & TURF, P.O. Box 6198, Duluth, Minnesota 55806-9898.



A HARDCOURT BRACE JOVANOVIICH PUBLICATION