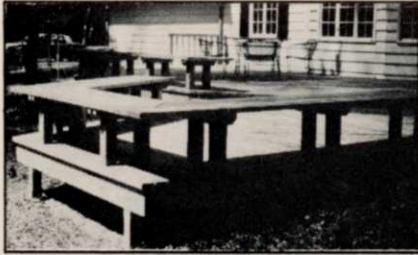




Students compete at ALCA Student Field Day in Stillwater, OK, in March. Oklahoma State University hosted competitors from ten schools with landscape contracting programs.

JUNE 1982/VOL. 21, NO. 6



Deck construction for extra profits . . . page 24

18

Kentucky Bluegrass Seed May Exceed Demand

Annual survey of seed producers prior to harvest indicates potential oversupply of Kentucky bluegrass and spot shortages of fescues and ryegrasses.

38

Clematis: Climbing To Brighten Landscapes

Doug Chapman looks into the differences among varieties of Clematis for professional landscapes. This perennial standout fits in low maintenance landscapes.



The forest is Alex Shigo's laboratory . . . page 28

24

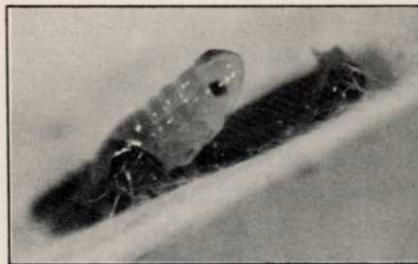
Deck Construction Strong Despite Economy

Landscape contractors show that all is not lost by a falloff in new construction. Decks are elements of the landscape logically provided by contractors.

44

Aquatrols Earns a Role In Water Short World

The 20th Anniversary celebration continues with the story of Aquatrols, a supplier of wetting agents to the landscape industry.



Greenbug aphid survives Ohio winter . . . page 36

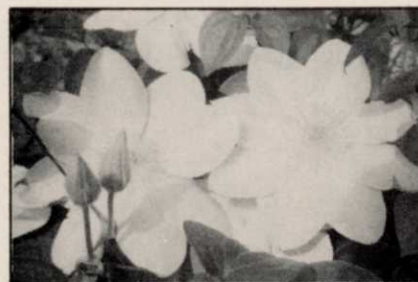
28

Tree Defenses Studied By Forest Service' Shigo

Dr. Alex Shigo, the man who brought you the theory of tree compartmentalization has found evidence that energy reserves in elms may be related to tree health.

DEPARTMENTS

Outlook	6
Green Industry News	8
Golf Update	12
Landscape Update	14
Government Update	16
Vegetation Management	50
Letters	52
Products	55
Events	64
Classifieds	66
Advertiser Index	68



Old or new wood matters for Clematis . . . page 38

36

Greenbug Aphid Eggs Hatch After Ohio Winter

Dr. Harry Niemczyk confirms theory that this new turf pest overwinters instead of migrates. Natural selection pits the aphid against the contractor.

Robert L. Edgell, Chairman; Richard Moeller, President; Lars Fladmark, Executive Vice President; Arland Hirman, Treasurer; Thomas Greney, Group Vice President; Ezra Pincus, Group Vice President; Larry Witchel, Group Vice President; Joe Bilderbach, Vice President; James Gherna, Vice President; George Glenn, Vice President; Harry Ramaley, Vice President.

WEEDS TREES & TURF [ISSN 0043-1753] is published monthly by Harcourt Brace Jovanovich Publications. Corporate and Editorial offices: 757 Third Avenue, New York, New York 10017. Advertising offices: 757 Third Avenue, New York, New York 10017 and 111 East Wacker Drive, Chicago, Illinois 60601 and 3091 Maple Drive, Atlanta, Georgia 30305. Accounting, Advertising Production and Circulation offices: 1 East First Street, Duluth, Minnesota 55802. Subscription rates: \$15 per year in the United States; \$18 per year in Canada. All other countries: \$40 per year. Single copies [prepaid only]: \$2 in the U.S.; elsewhere \$4.50; add \$3.00 for shipping and handling per order. Second class postage paid at Duluth, Minnesota 55806 and additional mailing offices. Copyright © 1982 by Harcourt Brace Jovanovich, Inc. All rights reserved. No part of this publication may be reproduced or transmitted in any form or by any means, electronic or mechanical, including photocopy, recording, or any information storage and retrieval system, without permission in writing from the publisher. Microfilm copies of articles are available through University Microfilms, International, 300 N. Zeeb Road, Ann Arbor, Michigan 48106

POSTMASTER: Send address changes to WEEDS TREES & TURF, P.O. Box 6198, Duluth, Minnesota 55806-9898.

(HBJ) A HARCOURT BRACE JOVANOVIH PUBLICATION