



Business conditions are tough, but landscape businessmen are tougher. Diversification and foresight have prevented major losses or cutbacks. See State of the Industry Report.

JULY 1982/VOL. 21, NO. 7



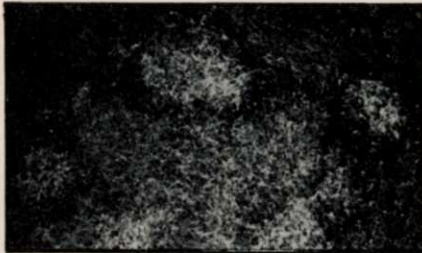
Northrup King's sales forces nearly a century ago, page 18.

18 Northrup King Nears Century Seed Mark

Northrup King first entered the professional turf field in 1970, but its agricultural and general turf seed business goes back to the turn of the century. Today, turf professionals know Northrup King as Medalist Turf Products.

32 State of the Industries: Diversity Provides Strength

When many other markets are severely affected by recession, the diversity of the market and the cautiousness of its members are providing a large degree of security.



Fusarium, one of the serious turf diseases, page 24.

24 Landscapers Incorporate Turf Disease Gains

Improved turfgrasses, altered cultural practices, and modern fungicides have helped landscape managers get a handle on turf diseases. Three turf pathologists cite the primary and secondary turf diseases and give keys to cultural practices to reduce disease incidence.

38 Hollies Stand Up To Urban Conditions

Doug Chapman covers a number of Ilex species for urban tolerance, foliage, fruit, and management. The shrub forms of Ilex have a wide range and offer diversity to landscape designers.



Deriving new business from old landscapes, page 28.

28 Award Winners Show Renovation Solutions

WTT selected landscape renovations projects from this year's award winners to show that new construction isn't the only game in town. Judges provide their reasoning for selecting this year's winners.



Fruit and foliage in urban conditions, Ilex, page 38.

DEPARTMENTS

Outlook	4
Green Industry News	6
Golf Update	12
Landscape Update	14
Government Update	16
Vegetation Management	49
Products	50
Events	57
Classifieds	58
Advertiser Index	60

Robert L. Edgell, Chairman; Richard Moeller, President; Lars Fladmark, Executive Vice President; Arland Hirman, Treasurer; Thomas Greney, Group Vice President; Ezra Pincus, Group Vice President; Joe Bilderbach, Vice President; James Gherna, Vice President; George Glenn, Vice President; Harry Ramaley, Vice President.

WEEDS TREES & TURF (ISSN 0043-1753) is published monthly by Harcourt Brace Jovanovich Publications. Corporate and Editorial offices: 757 Third Avenue, New York, New York 10017. Advertising offices: 757 Third Avenue, New York, New York 10017 and 111 East Wacker Drive, Chicago, Illinois 60601 and 3091 Maple Drive, Atlanta, Georgia 30305. Accounting, Advertising Production and Circulation offices: 1 East First Street, Duluth, Minnesota 55802. Subscription rates: \$15 per year in the United States; \$18 per year in Canada. All other countries: \$40 per year. Single copies (prepaid only): \$2 in the U.S.; elsewhere \$4.50; add \$3.00 for shipping and handling per order. Second class postage paid at Duluth, Minnesota 55806 and additional mailing offices. Copyright © 1982 by Harcourt Brace Jovanovich, Inc. All rights reserved. No part of this publication may be reproduced or transmitted in any form or by any means, electronic or mechanical, including photocopy, recording, or any information storage and retrieval system, without permission in writing from the publisher. Microfilm copies of articles are available through University Microfilms, International, 300 N. Zeeb Road, Ann Arbor, Michigan 48106.

POSTMASTER: Send address changes to WEEDS TREES & TURF, P.O. Box 6198, Duluth, Minnesota 55806-9898.

HB A HARDCOURT BRACE JOVANOVIH PUBLICATION