

GREEN INDUSTRY NEWS

TURF

In-state expertise shines at NJ Expo

Many states have turf conferences, but few can provide the collection of expertise within the state as New Jersey can.

This is most evident at the VIP luncheon held during the Expo each year. New Jersey representatives included Reed Funk, the dean of improved turfgrasses; Peter Loft of Loft Seed Company; Henry Indyk and Ralph Engel of Rutgers; Al Radko, recently retired director of the USGA Green Section; Spencer Davis, retired New Jersey extension turf pathologist; and Eb Steiner of Pine Valley Golf Club. Add to this list out of staters such as Jim Watson of Toro; Rich Valentine of Merion Country Club; Bill Meyer of Turf Seed Inc. (one of Reed Funk's graduates); John Hall of VPI; and Geoffrey Cornish, the famous golf course architect; and you have a turf homecoming of sorts.

The New Jersey Expo carefully protects all turf specialties and resists devoting too much to lawn care. Sod producers, golf course superintendents, estate managers, landscape contractors and government landscape managers are all served by the two specialty sessions, golf and fine turf and lawn and utility turf. Lawn care firms are not forgotten, but lawn care is not a new thing to New Jersey, the state



Peter Loft received New Jersey Turfgrass Hall of Fame Award.

where the market became a specialty.

The educational program began with two-hour concurrent workshop sessions on diesel engines (Duncan Macrae, Toro) irrigation pumps (Jerry Pettengill, Pumping Systems) and weed

identification (Barbara Emerson, Union Carbide Agricultural Products). The sessions were all well-attended and informative. Macrae's workshop on diesel engines was a virtual primer

Continues on page 11

TURFGRASS

Pennsylvania Turf Show set for March 1-4

The 1982 Pennsylvania Turfgrass Conference and Trade Show will be held at the Hershey Lodge and Convention Center, Hershey, PA, March 1-4.

This year's educational sessions will concentrate on golf course management and lawn care and grounds maintenance. The general sessions Monday afternoon and Tuesday will include discussions on the gypsy moth, water management, natural versus artificial turf, varietal resistance to insect attack,

the effect of herbicide use on disease occurrence and the preparation of Merion Golf Club for the 1981 U.S. Open.

Wednesday and Thursday will offer separate sessions for golf turf and lawn care and grounds maintenance. The golf turf sessions will have presentations of *Poa annua*-bentgrass competition, disease control, solutions to drainage problems, difficulties associated with highly modified greens, winter injury to perennial ryegrass, new insecticide results, goose grass control and colonial bentgrass development.

The lawn care and grounds maintenance sessions will feature presenta-

tions on handling customer complaints, applicator training, customer communications, fertilizer programs, species selection and management in the shade, high school athletic field maintenance, managing for better wear tolerance, growth retardants, insecticides renovations, and diagnosing turf problems.

The list of scheduled speakers includes: Dr. James Watson, The Toro Co.; Dr. Robert Shearman, University of Nebraska; Dr. Clinton Hodges, Iowa State University; Dr. Keith Karnok, Ohio State University; Dr. Richard Ratcliffe, USDA, Beltsville; Jim Samis, Monsanto Corp.; and Ken Hinson, Sears Lawn Care.

on the subject. He went over the basic differences between diesel and gasoline engines, including the benefits and drawbacks of each. In reference to diesel engine maintenance, Macrae stressed filtration. "You should perform recommended maintenance at or before the manufacturer's specified intervals," noted Macrae. "Keeping dirt and water out of the injection system is the number one priority." In terms of cost efficiency, on the positive side the diesel is fuel efficient, requires less maintenance, is very reliable and produces increased power; while on the negative side it has a high purchase price, Macrae added.

Dr. John Hall III, extension turf agronomist at VPI, Blacksburg VA, delivered the keynote address, "Looking Ahead In Turf." Hall noted that these are "exciting times" due to advances in chemicals and genetics. He warned that the 1974 oil embargo showed that the green industry was on the bottom of the energy totem pole and it has to compete with other areas for the population's disposable income. With the number of new golf courses increasing at a decreasing rate, Hall predicted a trend to multiple uses of courses and an increase in maintenance efficiency. He added that the rapid expansion of the lawn care industry could lead to price wars, expansion into smaller towns and a decrease in operator turnover.

Hall's observations on the future of the green industry included a trend towards higher mowing heights, less fertilizer usage, the use of low pressure heads in irrigation, an increase in diesel equipment, a trend towards grasses with low nitrogen requirements and high drought tolerance, and an increase in the use of effluent water.

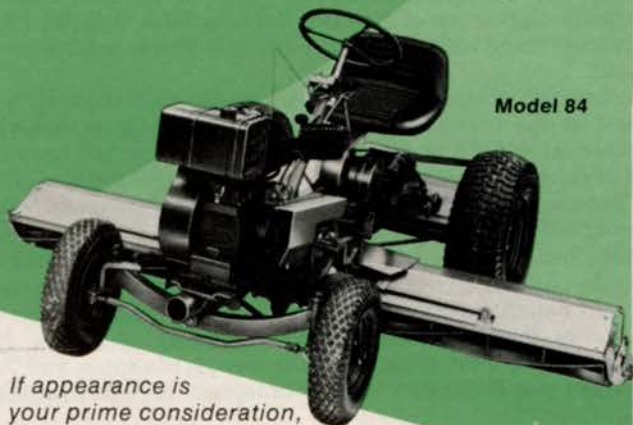


Turf Seed Company's Bill Meyer and Toro's Jim Watson share prespeech jitters during New Jersey Expo.

Other noteworthy educational sessions included C. Reed Funk on turf-type ryegrasses, Toro's Jim Watson on adjusting the water system, Turf-Seed's William Meyer on athletic field grasses and Henry Indyk on athletic field construction. Indyk educated the audience on the problem of contractors who purposely bid low and then cut specifications. He advocated the use of resident managers to keep the job to

Continues on page 12

Ugly, but Economical!



Model 84

If appearance is your prime consideration, better think about another mower.

If economy and quality is what you want — you want a National Mower!

In today's economy, one of the most difficult engineering tasks is to produce a completely functional and easily maintainable machine with a minimum number of components. *We've been doing just that since 1919.*

In addition, we skimp on styling in order to lower initial price and to build mowers that give you years of extra service.

Rather than adding fancy shrouds, shiny hubcaps and frills, we concentrate on providing mowers with maneuverability and superb performance on banks and hillsides. For better quality, we use Timken bearings; automotive-type transmissions and heavy-duty, tubular steel frames. Reels adjust down to fixed bed bars providing for more rigid and longer lasting mowing units. Bed knives have turned up lips for extra wear... *a feature we introduced as early as 1925.* For professional results, National's three power-driven, free-floating reels follow ground contour and cut without skip or scalping.

Chrome accent strips don't add to serviceability, so we don't use them. National's no-nonsense design makes normal service faster than any mower on today's market.



Model 68

Check out the economies of these ugly beauties... we've been adding nothing but quality since 1919.

WRITE for detailed literature on all National Mowers



NATIONAL
Mower Company

660 Raymond Avenue • St. Paul, Minnesota 55114
Phone: 612/646-4079

Circle No. 135 on Reader Inquiry Card

GOLF

UPDATE

Four receive Distinguished Service award

Superintendents Sherwood Moore and Milton Bauman, USGA Green Section National Director Alexander Radko and turf nurseryman Ben Warren received Distinguished Service awards at the Golf Course Superintendents Association of America Show in New Orleans, LA. The award denotes "outstanding service to the golf course superintendent's profession."

Milton Bauman is superintendent of the Seattle Golf Club. He was instrumental in the founding of the Northwest Turfgrass Association. Bauman served as NTA president for three terms and has been on the board of directors for over 20 years. Since coming to the Seattle Golf Club in 1970, Bauman has worked with Washington State University researchers on using sulfur to control soil pH and inhibit *Poa annua* growth.

Al Radko has spent the last 34 years with the USGA Green Section spanning the positions of research assistant, agronomist, eastern regional director and national director. Additionally, Radko was involved in research studies that developed Merion Kentucky bluegrass, Meyer zoysiagrass, U-3 bermudagrass, C-strain creeping bluegrass, and Touch-down, RAM I and Bellevue Kentucky bluegrass. He was also editor of the USGA Green Section Record.

Sherwood Moore is currently superintendent of Winged Foot Golf Club, Mamaroneck, NY. A golf course superintendent since 1939, Moore has worked at various clubs in New York, New Jersey and Connecticut. He has also been president of the New Jersey GCSA and the Metropolitan GCSA.

Ben Warren founded Warren's Turf Nurseries in 1938 and it grew to become one of the largest of its kind in the world. Warren's turf is grown and sold in five midwest states, New York and California. He has been instrumental in the founding of the Sod Growers of Illinois, the Midwest Regional Turf Foundation, and Illinois Turf Foundation and the American Sod Producers Association. Additionally, Warren is well known for the innovations (both mechanical and research) that he has contributed to the green industry.

GCSAA consolidates committee functions

The Golf Course Superintendents Association of America have consolidated their 19 standing committees into nine. In the process committee functions were merged to make the association's administrative duties more workable.

The nominating and election committees and the President's Council were left unchanged by the redistribution. The nine new committees will be chaired by executive committee members. The consolidation was structured so that subcommittees could be established under the new committees but no committee vice chairmen will be appointed.

Fream Group to design three new courses

The Ronald Fream Design Group, Santa Rosa, CA, have been awarded three new contracts. The golf course architect/resort master planning consulting firm will design and prepare working drawings for the 27-hole Chaguaramas Public Golf Course to be constructed near Port of Spain, Trinidad, West Indies. A 36-hole resort course is being master planned for Nongsa Beach, offshore from Singapore. Preparation of a master plan for the remodeling of the Jockey Club Golf Course in Buenos Aires, Argentina is also underway.

The Fream Group is currently involved in three other projects under construction. They are the Genting Highlands Golf Course in Malaysia, the Pantai Mentiri Golf Club in Brunei and The Serapong Course in Singapore. At the Serapong site over one-half of the course is being built on land dredged from the sea which involves more than two million cubic yards of earthmoving.

specifications and having each phase of construction approved before the start of the next phase. Indyk cautioned the listeners about "file-dipping" architects. He noted that some architects use standard specifications for many different sites in an effort to cut costs.

One session which seemed to sparkle, although the topic could have appeared weak, was a two-hour session on bunkers. Golf course architect Geoffrey Cornish, USGA Green Section's Carl Schwartzkopf, Rich Valentine of Merion Country Club, Stan Helstowski of Wheatley Hills Country Club, Dave Canavan of Moore Golf Inc., and Byron Phoebus of Farmstead Golf and Country Club gave all sides of the bunker issue. The benefits have too often been overlooked for maintenance considerations. Bunkers can and do help golfers and the course. They have special problems such as drainage, an sand composition, and improper location, but they also save the golfer from worse hazards and add challenge to the course.

One of the highlights of the show was the annual banquet. Peter Loft of Lofts Seed Co., Bound Brook, NJ, was the recipient of the New Jersey Turfgrass Hall of Fame Award for 1981.

LAWN CARE

PLCAA elects 1982 slate of officers

At the annual business meeting of the Professional Lawn Care Association of America in Louisville, KY, the following officers and directors were elected to serve during the coming year.

For the office of president, J. Martin Erbaugh, Lawnmark, Division, Erbaugh Corporation, Peninsula, OH; vice president, Ronnie L. Zwiebel, Green Care Lawn Service (formerly Chem-Care Lawn Service of Alabama, Inc.) Birmingham, AL; and secretary-treasurer, Donald Burton, Lawn Medic, Inc., Rochester, NY. These newly elected officers will serve one-year terms.

New directors are Paul Bizon, Pro-Grass Lawn Service, Inc., Hubbard, OR; Des Rice, the Weed Man Ltd., Mississauga, Ontario; William Fischer, Spring Green Lawn Care Corp., Plainfield, IL; and John Kenny, Turf Doctor, Framingham, MA. All will serve a three-year term.

Remaining on the board to complete their terms are: Richard L. White, Village Green Ltd., West Chicago, IL; John A. Latting, Lawn Groomer, Normal, IL; Douglas Baker, Leisure Lawn, Inc.,

Continues on page 14

ASLA annual meeting posts record

More than 2300 landscape architects traveled to Washington, DC to participate in the 1981 Annual Meeting of the American Society of Landscape Architects.

Under the theme, "Action by Design," delegates witnessed four major presentations and more than twenty specialized education sessions geared to help make them active participants in society's decision-making process. The expanded educational exhibit was sold out with over 100 exhibitors participating. Ambassador Elliot Richardson delivered the keynote address on becoming active societal participants at the global level. Other speakers included former Secretary of the Interior Stewart Udall, Executive Director of the Greater Cleveland Roundtable Sarah Short Austin, and Charleston, SC Mayor Joseph Riley Jr.

At the meeting, Calvin Bishop, Bishop & Walker, Houston, TX, was installed as president. Other officers installed include: Theodore Wirth, president-elect; Cameron Man, vice president; and Donald Fox and Brian Kubota, vice presidents (continuation of their two-year terms). Past President William Behnke will continue on the ASLA Executive Committee for one year.

Sir Geoffrey Jellicoe, a British landscape architect, was awarded the ASLA Medal, the society's highest and most prestigious award. Past President Lane Marshall, head of Texas A&M University's department of landscape architecture, was awarded the ASLA President's Medal. This award is offered in recognition of unselfish and devoted service to the Society at the national level over a period of five years or more. The 1982 Annual Meeting will be held in Honolulu, Hawaii in November.

AAN publishes computer guide

The *AAN Computer Directory*, published by the American Association of Nurserymen, was conceived and designed to assist nursery business firms contemplating installation of a computer.

The 28-page directory lists 153 firms—retail, landscape, mailorder and grower—which have computers plus eight others which use service or accounting firms or which use time-sharing. The directory gives complete name, address and phone number of the nursery firm by state; business classification (i.e. retail, etc.); manufacturer, model and language of the computer and what type programs are being handled (i.e. personnel, payroll, inventory, billing receivables, payables, general ledger, bookings, other).

Many of the firms in this directory have indicated they are willing to share their experiences and/or information about their computer operations. In addition, many firms are willing to sell and/or rent their company-owned programs.

A single free copy is available to AAN members on receipt of a self-addressed business size envelope. Non-members may obtain a copy for \$3 each. Send pre-paid order to American Association of Nurserymen, 230 Southern Building, Washington, D.C. 20005.

NMC to publish landscaping research

The Nursery Marketing Council is compiling statistics on landscaping that it has isolated from consumer research within its all-industry marketing program. A detailed analysis of the home building industry and related landscape services will be the subject of an NMC "white paper" due out in the next few months. A few preliminary details currently available are: 70.5% of all homeowners strongly agree that you plant to increase property value; 50.7% strongly agree that the main reason to plant is to help sell house at the asking price; and 43.9% strongly agree that one of the main reasons to plant is to sell a house faster.

Dayton, OH; Larry Brandt, Spray-A-Lawn, Cincinnati, OH; Gordon Ober, Davey Lawnscape, Kent, OH; and Robert W. Miller, ChemLawn Corporation, Columbus, OH. Jerome R. Faulring, Professional Turf Corp./Hydro Lawn, Gaithersburg, MD, remains on the Board as immediate past president.

Serving as the associate member representative for the year 1982 is William Stinson III, O.M. Scott & Sons, Marysville, OH.

GYPSY MOTH

Gypsy moth spreading out of Northeast

Gypsy moth caterpillars, which defoliated about 13 million acres of trees during 1981, appear to be hitchhiking out of the Northeast, according to the U.S. Department of Agriculture.

In 1981, traps turned up new infestations of gypsy moths in Arkansas, California, North Carolina, Oregon, Virginia, West Virginia and Wisconsin. "We're also concerned about small concentrations of male gypsy moths that were trapped in Alabama, Indiana, Minnesota, Ohio and South Carolina," said Harvey Ford, deputy administrator of the USDA's Animal and Plant Health Inspection Service. "These moths had human help in traveling so far from home. The female moths lay eggs in any protected spot out-of-doors, and some of the favorite spots are on vehicles, lawn furniture and camping gear."

Ford said several hundred moths were trapped in Florida campgrounds, possibly the result of northeastern campers who vacationed there during Easter, when gypsy moth egg masses on their camping equipment were hatching.

USDA researchers have been making progress in their studies of natural enemies of the gypsy moth. In laboratory tests two species of parasitic wasps brought by U.S. scientists from India attacked and destroyed the gypsy moth caterpillars. The researchers now plan field tests to determine the overall effectiveness of the wasps as biological controls to help curb gypsy moth infestations. According to Joan Wallace, administrator of the USDA's Office of International Cooperation and Development, the wasps will cause no disruption to the U.S. environment and pose no threat to other animal species or to humans. Research on the two species of wasp, *Apanteles flavicoxis* and *Apanteles indiensis*, is being conducted at the USDA's Beneficial Insects

Continues on page 16

UPDATE

BY WILLIAM HOFFMAN

New nematode threatening pines

The U. S. Department of Agriculture reported that the pine wood nematode has been identified in pine species in 38 states. Ornamental pines seem to be the most susceptible with the Japanese black pines in the ocean beach areas from Long Island to North Carolina especially hard hit in the last two years. Some damage to Scots pine Christmas trees have been found especially in areas where dry summers and falls have placed added stress on the trees. The nematode is carried by long-horned beetles. Pest management is based on control of the beetles and by direct tree injection of a nematicide. The pine knot nematode, probably native to the United States, was first identified with pine tree deaths in Missouri in 1979.

Floraboard attached to Farm Bill

Proponents of Floraboard were able to add the "Floral Research and Consumer Information Act" to the U. S. Senate Farm bill. The Senate version differs slightly from the bill originally introduced in the House in that the Floraboard shall convene an advisory panel drawn from the wholesale and retail segments of the flower and plant industry and shall consult it frequently on all marketing, promotion and research programs.

This new legislation was adopted by the Farm Bill conferees with no serious adverse comments since the costs to the Federal government will be minimal. Floraboard came into effect when President Reagan signed the 1981 Farm bill.

EPA relaxes pesticide advertising

The 1978 amendments to the Federal Insecticide Fungicide and Rodenticide Act (FIFRA) defined "use of a registered pesticide in a manner inconsistent with its labeling" so that the following are not misuses: (1) applying a pesticide at any dosage, concentration, or frequency less than specified on the label; (2) applying a pesticide against any target pest not specified on the labeling if the application is to the site named on the labeling and not specifically forbidden by the labeling; (3) using any method of application not prohibited by the labeling and (4) mixing a pesticide or pesticides with a fertilizer unless labeling prohibits such mixtures.

Not All MH Products Cancelled

Government Update in *Weeds, Trees & Turf*, December, 1981, implied that all MH registrations were suspended. This is not the case.

On August 14, 1980, EPA issued a 3 (c) (2) (B) notice to maleic hydrazide (MH) registrants requesting them to arrange for the submission of additional data. Registrants who did not respond to that notice would have both their diethanolamine (DEA) and potassium salt (K) registrations suspended. EPA issued their follow up notice of an Intent to Suspend Registrations on September 16, 1981. (Please find a copy of the Federal Register notice attached to this letter.)

Since one company has made a commitment to produce and submit the necessary toxicological studies on the potassium salt formulation of MH, that formulation *will not be suspended*. (Only those companies who did not respond in any way to EPA's notice will have their potassium salt formulations suspended.)

Since no registrant agreed to initiate studies for the DEA salt, all registrations were suspended. Registrants, however, will be allowed to sell or distribute existing stocks until they are exhausted.

Willard Cummings
Product Registration Specialist
Uniroyal Chemical
Bethany, CN

Research Laboratory, Newark, DE.

In other gypsy moth news, both Maryland and Delaware are gearing up to combat the defoliating caterpillars. The University of Maryland Cooperative Extension Service is no longer recommending the use of oak, particularly white oak, as a tree for home plantings. "White oak is the preferred food plant of the gypsy moth," explains Extension entomologist John Davidson. "Unfortunately, oak trees are among the most widely planted ornamental species." Davidson suggests planting tree varieties which gypsy moth caterpillars will not eat. He lists tulip poplar, sycamore, ash, catalpa, dogwood, hackberry, honey locust, horse chestnut, persimmon, walnut, osage orange and mulberry (all deciduous); and holly, arborvitae and juniper (evergreen) as food plants the insects avoid.

The Delaware Cooperative Extension Service and Department of Agriculture is currently planning meetings in New Castle and Kent counties to coordinate its 1982 control efforts. With Delaware having its first sizable outbreak of gypsy moths last spring, it is being especially vigilant. "One defoliation usually doesn't kill most trees," said University of Delaware extension pesticide specialists John McDaniel. "But if it occurs two years in a row, some may die."

EQUIPMENT

Lawn and garden shipments show decline

Twelve-month shipments by reporting members of the Outdoor Power Equipment Institute (OPEI) statistical program declined 20.6% when compared with the same period in 1980.

The 4.6 million walk-behind power mowers shipped in 1981 compares with 5.7 million units in the 1980 model year. Factory values declined from \$701 million to \$606 million, or 13.6%.

Shipments of riding garden tractors

Continues on page 74



Incoming ASLA President Calvin Bishop (left) is congratulated by outgoing President William Behnke at the ASLA Annual Meeting in Washington, DC. (For information on the meeting turn to this issue's Landscape Update column.)

declined 31.4% to 151,000 units having a F.O.B. value of \$266 million. Last year's 220,000 units were valued at \$351 million.

Estimated shipments of lawn tractors/riding mowers totalled 620,000 for the 1981 model year, down 23.3% from 1980. F.O.B. factory value also dropped to \$453 million or 14.5% less than 1980 values.

Rotary tiller shipments were off 24.9% to 501,000 units, a decline of 166,000 units from the 667,000 shipped

in 1980. Factory value decreased 13.2% from \$159 million to \$138 million.

The twelve-month across the board declines can be attributed in part of high interest rates and a decline in household spending.

The twelve-month period begins in September and ends August 31, 1981. Companies participating in the OPEI statistical reporting program account for a vast majority of total industry shipments of the above products.

EQUIPMENT

Jacobsen posts 1981 sales increase

In an address to a group of major U.S. and Canadian turf product distributors, John Dwyer Jr., president of Jacobsen Division of Textron, Racine, WI, said that company volume for the sales year ending September 30, 1981, was up over the previous year. He added that continued gains are predicted for 1982.

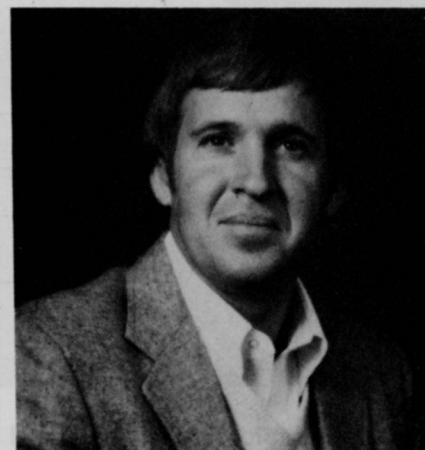
Dwyer told the distributors, who represent approximately \$200 million annually in total turf-related sales, that Jacobsen's sole focus is turf and grounds maintenance equipment now that consumer lawn and garden care products are part of Textron's Homelite Division. "The company's operations have been streamlined by the change," Dwyer told the group.

The distributors noted that in the future customers will look less at unit price and more at efficiency, durability, service and parts backup. They indicated that while "systems" machines will probably continue to be offered, market direction will focus on units designed to perform one specific job well.

GOLF

Steve Tyler Joins Standard Golf Co.

Standard Golf Co., Cedar Falls, IA, has named Steve Tyler sales representative to represent Standard's Pro-Line golf course accessories throughout the U.S.



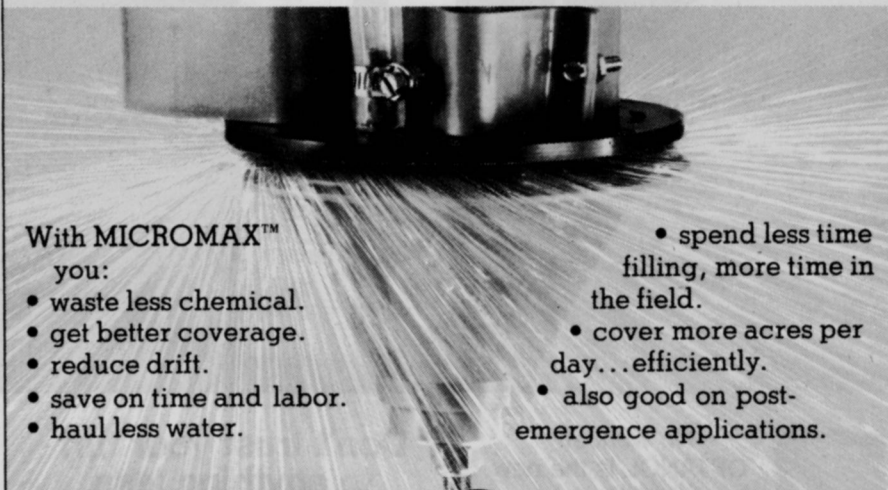
Steve Tyler with Standard Golf.

Before joining Standard, Tyler managed two municipal golf courses in Cedar Falls. He has been a superintendent or assistant superintendent for 14 years. He is affiliated with the Golf Course Superintendents Association of America, the Iowa Golf Course Superintendents

Continues on page 76

SAVE TIME & MONEY ON PRE PLANT INCORPORATED & PRE EMERGENCE APPLICATIONS

*MICROMAX™ does the job with 1½ to 3
gallons of total spray per acre!*



With MICROMAX™
you:

- waste less chemical.
- get better coverage.
- reduce drift.
- save on time and labor.
- haul less water.

- spend less time filling, more time in the field.
- cover more acres per day...efficiently.
- also good on post-emergence applications.

MICROMAX™

MICRON CORPORATION

P.O. Box 19698/Houston, TX 77024/(713)932-1405/TELEX 79 2511 MICRONW HOU

Circle No. 129 on Reader Inquiry Card

Association (president in 1978) and the Iowa Turfgrass Institute (president in 1980).

Standard Pro-Line accessories include ball washers, benches, flags, flag poles, putting cups, club washers and sighs.

FORESTRY

Karnosky named to Consortium post

Dr. David Karnosky has been named to succeed Dr. Lee Herrington as executive secretary of the Consortium for Environmental Forestry Studies.

A graduate of the University of Wisconsin with a Ph.D. in forest genetics, Dr. Karnosky has conducted research on the effects of air pollution on forest trees. Currently he is forest geneticist at the New York Botanical Garden Cary Arboretum in Millbrook, NY, where his work includes developing disease-resistant elms and examining stresses on trees in the urban environment. He is also adjunct associate professor at Marist College in Poughkeepsie, NY, and at the State University of New York (SUNY) College of Environmental Science and Forestry.

Karnosky will administer Consortium programs under an Intergovernmental Personnel Act agreement with the USDA Forest Service's Northeastern Forest Experiment Station. The Consortium consists of 12 northeastern universities and the Forest Service.

Through grants to individual universities, the Forest Service funds community and environmental forestry research projects, which are coordinated by the Consortium. Their aim is to improve the quality of life in the northeast. More than 200 papers and six major publications have been produced by Consortium members over the past ten years.

As executive secretary, Karnosky will oversee the coordination of continued research in such areas as tree breeding, insect and disease control, air quality, urban microclimate, and forest planning and management.

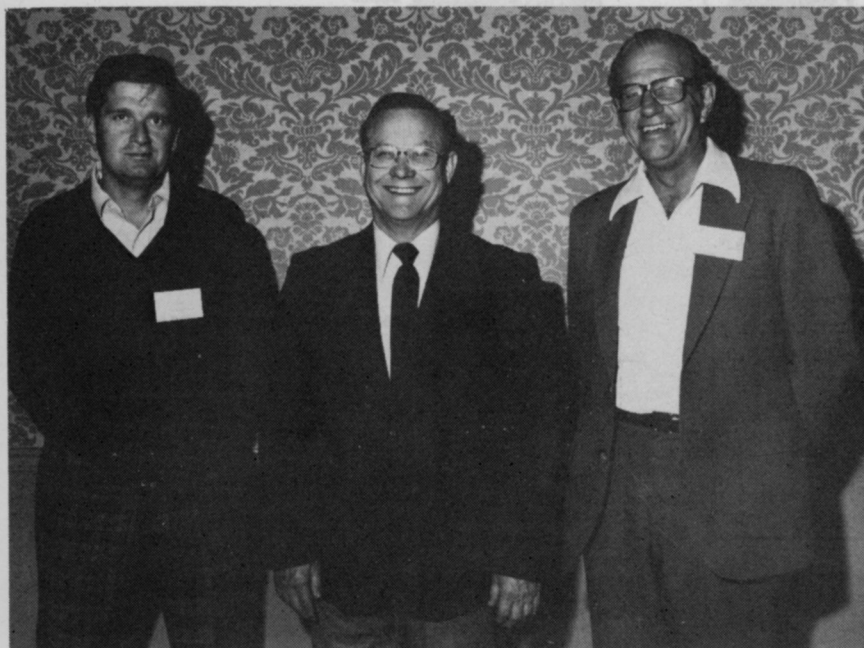
TURF

Midwest groundskeepers get tips on field care

Featured at the clinic were Gene Bossard, head groundskeeper at Comiskey Park since 1940, and his son Roger Bossard, who serves as assistant in charge of a staff of 18 grounds personnel at the oldest par in the major leagues. The Bossards explained how local park districts and high schools could adapt the major league club's grounds program to suit individual needs and budgets.

Among the more important topics covered in the clinic were the proper

Continues on page 80



Officers of the Lawn Seed Division of the American Seed Trade Association were elected at their joint meeting with the Atlantic Seedmen's Association in Providence, RI. They are (left to right) William Junk, secretary-treasurer; Willard Hovde, chairman; and Bob Peterson, vice president.

KEESTM

Better lawn care products to do the job easier & faster

21" Commercial MOWER



Model 210356

This powerful 21" F. D. Kees mower with heavy gauge steel deck and frame is built to stand up under rough use and keep on working year after year.

- Choice of 4 cycle, 3.5 or 5 hp Briggs & Stratton engine.
- Heavy gauge steel handle folds down without tools for easy transport and storage. Rigid "T" type handle also available.
- Special one-piece, suction-lift blade with tempered cutting edges. Adjustable cutting heights 1 to 3.5 inches.
- Heavy-duty steel wheels with grease fitting and sealed ball bearings. 8 x 1.75 tires.
- Special crankshaft protector.
- Extra large 1½ bushel nylon bag grass catcher available.
- Dual filter air cleaner.

Model 100528

POWERAKE®

(THATCHER)

Fold-over handle



- Rakes out thatch ■ Cleans 20" swath ■ Powerful 5 hp engine with dual filter air cleaner ■ 28 hardened steel plate, self-cleaning fingers
- Improved heavy-duty wheels ■ Raking assemblies interchangeable with aerator assembly ■ 2" single-action raking height adjustment ■ Semi self-propelled



Since 1874

Write P. O. Box 983

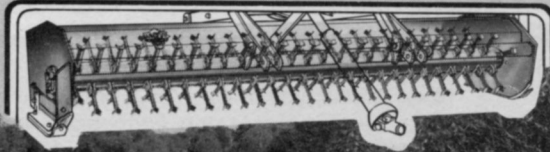
F. D. KEES MFG. CO.
Beatrice, Nebraska 68310

Circle No. 124 on Reader Inquiry Card

mott Flail Mowers HAMMER KNIFE **can cut your** **TURF CARE COSTS**

Mott Flail Mowers reflect extra value through greater versatility, added production with longer trouble-free life, and safer operation. No other mowing system is as versatile as the flail. With only one mower investment, you can trim fine lawns, shred tough weeds, mulch, renovate, dethatch and scalp. You can work any area that is smooth or rough, clean or trashy, level or steeply banked, dry or "liquid wet". And you can operate with much greater safety than with rotary mowers. Mott Flail Mowers are built to last and can be used with most tractors. Models are available in widths from 38 to 88 inches. In combination, they will handle up to 19 foot swaths. Contact us today and discover how the extra value of Mott Flails can pay off by cutting your turf care costs.

MOW LAWNS ■ RENOVATE ■ MULCH LEAVES ■ SHRED WEEDS



Mott Interstater Cuts 19' Swath.



MOTT CORPORATION 514 Shawmut Avenue
P.O. Box 518, LaGrange, IL 60525 (312) 354-7220

Circle No. 133 on Reader Inquiry Card

Why Grass is Greener Under Dedoes Equipment

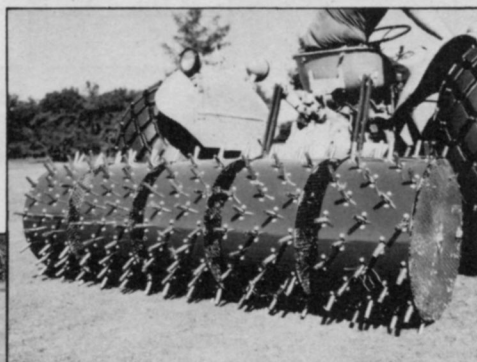
Dedoes Aerators Work Fast, Clean and Smart

One man can aerate an entire golf course or park quickly and easily with no clean-up. Dedoes' patented hinged tines remove consistently clean, round plugs. Choose the best tines, swaths and options for your grounds.



Dedoes Conversions Add Versatility

If you need to roll, slice or spike, conversion is a snap. Side options available, too.



Dedoes Sprayer-Edgers

Spray sharp, clear edges for most liquid applications.

Dedoes Utility Plows

Tough Dedoes Utility Plows smooth things out. Fits most maintenance equipment.



dedoes INDUSTRIES
INCORPORATED

Grounds Maintenance Division

P.O. Box 575
1060 W. West Maple
Walled Lake, MI 48088
(313) 624-7710 Out of state, call toll free 800 521-7086

Get your free brochure and the name of your nearest distributor today.

Circle No. 107 on Reader Inquiry Card

News from page 76

choice and blend of clay dirt and bank sand in a rebuilding plan to upgrade old or improperly built fields, use of irrigation and most effective drainage patterns for fields receiving heavy usage. "Fall is a logical time for local park districts to undertake a rebuilding program because summer athletic programs have ended and the fields can be worked without disrupting playing schedules," said Roger Bossard. Additionally, IMC specialists discussed and distributed technical data on how to rebuild baseball and football fields.

SEED

Northrup King promotes Vetter and Churchill

In an effort to restructure its professional turf department, Northrup King Co., Minneapolis, MN, has promoted Larry Vetter and Joe Churchill.

Vetter has been promoted to national sales manager for the Medalist turf products department. Churchill moves to the marketing department and has been named assistant product manager for Medalist Turf Products, reporting to Dennis Erickson, product manager for all lawn and turf products.

The initial Medalist marketing effort will concentrate on certain regions of the U.S. Future marketing efforts will consist of a national network of Medalist turf product sales specialists.

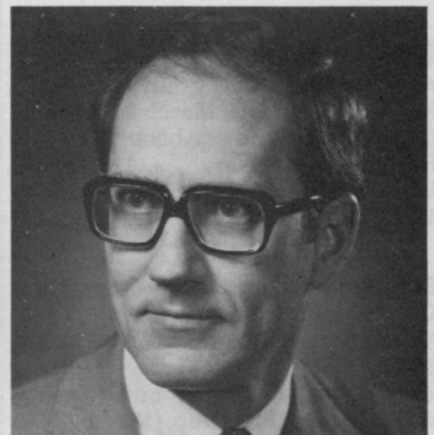
CHEMICALS

Bryson named president of Elanco Products Co.

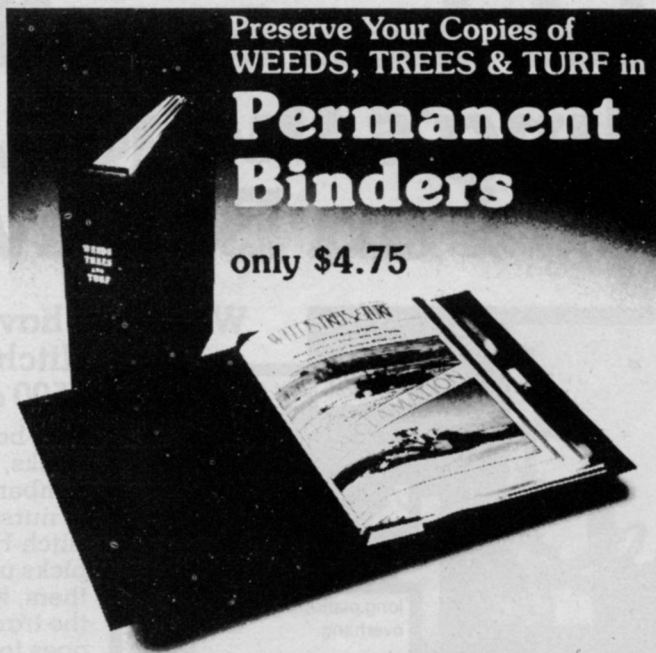
Elanco Products Co., Indianapolis, IN, the agricultural division of Eli Lilly and Co., has named Vaugh Bryson president.

Prior to the appointment, Bryson served as a vice president of Eli Lilly International Corp. with responsibility

Continues on page 82



New Elanco President Vaugh Bryson.



Preserve Your Copies of
WEEDS, TREES & TURF in
Permanent Binders

only \$4.75

Custom-made binder easily holds entire year's copies of WTT magazine. Green binder with gold embossed logo protects your magazines and gives your library a neat appearance. Magazines can be inserted as they are received. Annual index in December issue makes it easy to find information you need quickly . . . Send check or money order to:

WEEDS TREES & TURF

Book Sales

One East First Street, Duluth, MN. 55802

(Add \$2.50 per Binder Shipping Chg.) Allow 6-8 Weeks Delivery.

News from page 80

for pharmaceutical and agricultural product marketing in Europe, the Middle East and Africa. In a previous assignment, he had similar responsibilities for Australia, Canada, Japan, the Far East and South Africa.

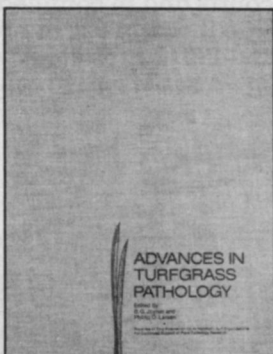
Oftanol adds Virginia registration

Oftanol 5%G, manufactured by Mobay Chemical Corp., Kansas City, MO, has been registered for use in Virginia. Oftanol is a granular organophosphate insecticide that is used for control of white grub larvae (such as Japanese beetle, Black turf grass Ataenius and Green June beetle), Hyperodes weevil, billbugs, chinch bugs and sod webworms.

In an effort to get Oftanol into the hands of potential users more rapidly, Mobay applied for both state-by-state and federal registration. While federal registration is still pending, Oftanol has been approved for use in Connecticut, Delaware, Illinois, Indiana, Kansas, Maryland, Michigan, Missouri, North Carolina, New Jersey, New York, Ohio, Pennsylvania, Rhode Island and West Virginia.

Advances in Turfgrass Pathology

published by **HARCOURT BRACE JOVANOVIH PUBLICATIONS** in cooperation with **Dr. B. G. Joyner, Dr. P. O. Larsen and Chemlawn Corporation**



This extensive volume contains chapters on:

- turfgrass diseases
- cool v.s. warm season pythium blight and other related pythium problems
- snow molds of turfgrasses
- fairy rings
- leaf spot of Kentucky Bluegrass in Minnesota
- initial and field fungicide screening
- turfgrass disease resistance
- PLUS MUCH MORE!

\$27.95* (hardcover)
\$18.95* (paperback)

COPIES LIMITED — DON'T DELAY!

ADVANCES IN TURFGRASS PATHOLOGY is a compilation of more than 23 reports and discussions by the nation's leading turfgrass pathologists. Explore the diseases that attack turfgrass. Find out how to conquer the battle of turfgrass diseases.

KEEP CURRENT WITH NEW IDEAS ON HOW TO HANDLE TURFGRASS PROBLEMS WITH ADVANCES IN TURFGRASS PATHOLOGY.

\$27.95* hardcover \$18.95* paperback
Quantity rates available on request.

Return this coupon to: Book Sales
Harcourt Brace Jovanovich Publications
One East First Street, Duluth, MN 55802

YES! Please send me _____ copy(ies) of ADVANCES IN TURFGRASS PATHOLOGY.

Name _____
Address _____
City _____ State _____ Zip _____
Phone _____

A check or money order for _____ is enclosed.

*Please add \$2.50 per order plus 25¢ per additional copy for postage and handling.

Please charge to my Visa, Master Card, or American Express (circle one)
Account Number _____
Expiration Date _____
Please allow 6-8 weeks for delivery. WTT 22