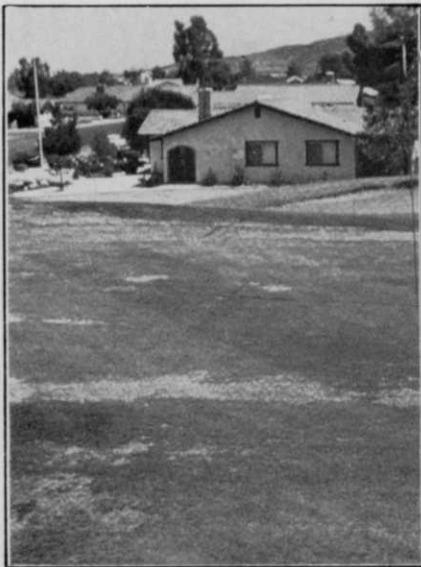




Cover: Wide turf tires lessen equipment-caused compaction on the golf course. See Part 3 of Ron Fream's *Compaction on the Golf Course*, page 22.

DECEMBER 1982/VOL. 21, NO. 12



Compaction-hampered green, see page 22.

## 22

### Soiless Greens Mean Less Compaction and Better Turfgrass

The third part of Golf Course Architect Ron Fream's series on compaction on the golf course. Design and construction can outweigh maintenance considerations.

## 26

### Propagation Changes Result in Hardier, Regional Cultivars

Dow Garden's Douglas Chapman explores today's propagation techniques and their effect upon the speed and variety of landscape plants.

## 29

### Landscape Management Profile: Apartments and Condominiums

Condominium associations are seeking to reduce costs as landscape standards increase. Curb appeal and tenant comfort help apartments and condominiums compete for business. Profiled this month are Peter Cooper Village and Stuyvesant Town in New York City and The Hamlets in Alexandria, VA.

## 44

### WT&T 1982 Index of Articles and Authors

Keep this page for quick reference to articles during the past year. Saves time and helps you find valuable references quickly.



Curb appeal for apartments, see page 29.



Eighty acre oasis in N.Y.C., see page 32.

## DEPARTMENTS

Outlook	6
Green Industry News	8
Golf Update	12
Landscape Update	14
Government Update	16
Vegetation Management	38
Events	40
Products	46
Classifieds	50
Advertiser Information	52

Robert L. Edgell, Chairman; Richard Moeller, President; Lars Fladmark, Executive Vice President; Arland Hirman, Treasurer; Thomas Greney, Senior Vice President; Ezra Pincus, Senior Vice President; Joe Bilderbach, Vice President; James Gherna, Vice President; George Glenn, Vice President; Harry Ramaley, Vice President.

WEEDS TREES & TURF (ISSN 0043-1753) is published monthly by Harcourt Brace Jovanovich Publications. Corporate and Editorial offices: 757 Third Avenue, New York, New York 10017. Advertising offices: 757 Third Avenue, New York, New York 10017 and 111 East Wacker Drive, Chicago, Illinois 60601 and 3091 Maple Drive, Atlanta, Georgia 30305. Accounting, Advertising Production and Circulation offices: 1 East First Street, Duluth, Minnesota 55802. Subscription rates: \$15 per year in the United States; \$18 per year in Canada. All other countries: \$40 per year. Single copies (prepaid only): \$2 in the U.S.; elsewhere \$4.50; add \$3.00 for shipping and handling per order. Second class postage paid at Duluth, Minnesota 55806 and additional mailing offices. Copyright © 1982 by Harcourt Brace Jovanovich, Inc. All rights reserved. No part of this publication may be reproduced or transmitted in any form or by any means, electronic or mechanical, including photocopy, recording, or any information storage and retrieval system, without permission in writing from the publisher. Microfilm copies of articles are available through University Microfilms, International, 300 N. Zeeb Road, Ann Arbor, Michigan 48106.

POSTMASTER: Send address changes to WEEDS TREES & TURF, P.O. Box 6198, Duluth, Minnesota 55806-9898. **(HBJ)** A HARCOURT BRACE JOVANOVIH PUBLICATION