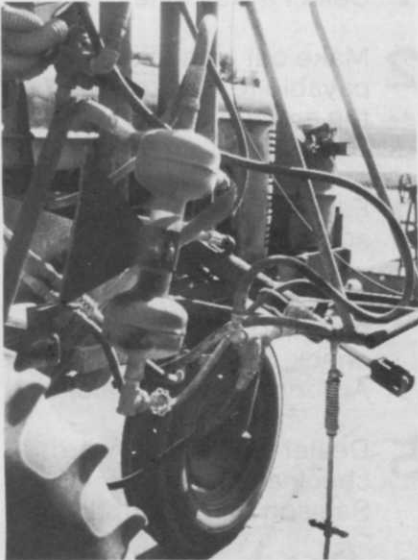


PRODUCTS

Lakos Separators made by the Claude Laval Corp. keep sand and grit from clogging and abrading spray rig nozzles. They can remove



98 percent of all particles as small as 200 mesh from their source water for mixing with chemicals. Only maintenance required is an occasional purge of the solids collection chamber.

Circle 701 on free information card

Hahn, Inc. has introduced a self-propelled, all-purpose sprayer, the Spray-Pro. It has a 16-horsepower engine, 3-speed transmission and 160-gallon poly tank. Standard



sprayer has a centrifugal pump and 16-foot boom. High flotation tires assure little turf loading. Optional features include hand gun kit, 22-foot boom, and high pressure pump kit.

Circle 704 on free information card

A protective hood houses the entire application system of the Kleco drip-proof sprayer made by Buffalo Turbine AG Sales of Texas. This control system works for insecticides, herbi-

cides, fungicides, liquid fertilizers, soil sterilants, and lawn dyes. It helps eliminate chemical drift due to wind and upward movements; protect operator from contact with spray regardless of wind direction; and reduce both stream contamination and the cost of spraying by requiring only the minimum application recommended by chemical manufacturers.

Reliable PTO-driven pump and other parts provide little maintenance problems. It will convert from



three-point to dragtype hitch with gas-inversion power for practically all towing systems.

Circle 703 on free information card

A mobile boom sprayer, the Mark III Spray-Hawk, eliminates all guesswork in applying chemicals to turf. It provides easy, fast spraying; accurate, uniform applications; and positive protection of fine turf. By coordinating the pressure of the sprayer with his natural walking speed, operator can apply the exact amount of turf chemical recommended. You can spray at the exact rates recommended by the manufacturer in a precise, uniform spray pattern to avoid harmful over-spraying and obtain more efficient and economical use of spray chemicals.

Spray-Hawk is lightweight, yet sturdily built with a stainless steel boom for long life. It has a positive on-off spray with easy-to-use pistol grip control. No-drip nozzles automatically close when pressure falls below 3 psi.

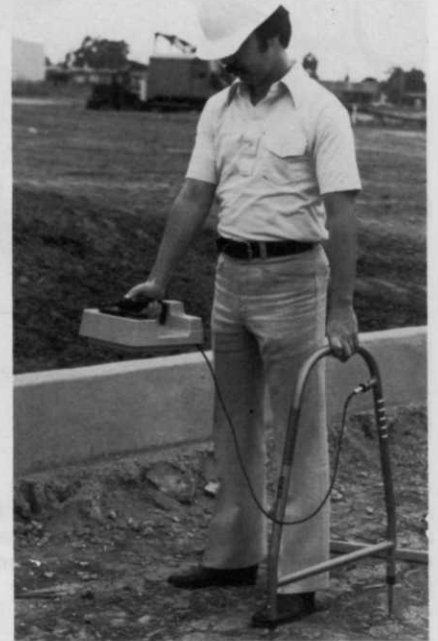
Circle 702 on free information card

Jumbo Sack semi-bulk container cuts losses and damages of changing bags in handling. There is no need to slit or seal bags, a major cause of contamination. Jumbo Sack, which

safely contains 3,300 pounds, comes from Marino Systems, Inc.

Circle 708 on free information card

Fault and cable locator by TelComm Products Div. of 3M is designed to help solve most underground sprinkler system control cable problems.



The device locates cables and gauges their depth. Then any damaged section can be found by following the cable and watching the meter.

Circle 705 on free information card

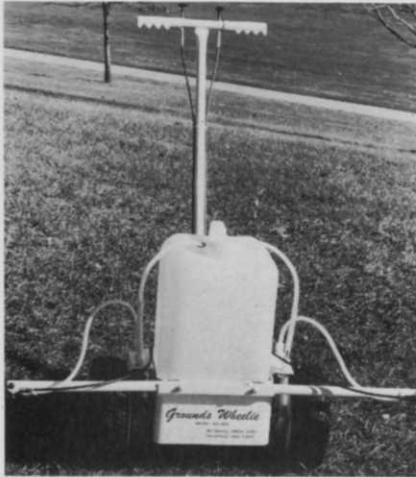
The WS-480 Grounds Wheelie manufactured by Wheel Spray Corp. is a liquid chemical spreader with a ground-driven pumping system. It is motorless and does not require gasoline, batteries, cords, or water hoses. It applies liquid fertilizers, fungicides, herbicides, insecticides, and growth regulators. The twin wheel pumps spray a fan of solution 6 feet wide at 1,000 square feet per gallon. Coverage is relatively unchanged by the speed at which the sprayer is pushed; the faster it is pushed, the faster it pumps.

The pumping system and the 6-gallon container are made of corrosive-resistant materials. The spray comes from two nozzles in the form of tiny droplets providing a steady uniform application which greatly reduces costly chemical

Products

from page 96

drifting. The frame is fabricated of heavy gauge steel with shut-offs



located on the handle grips.

Circle 706 on free information card

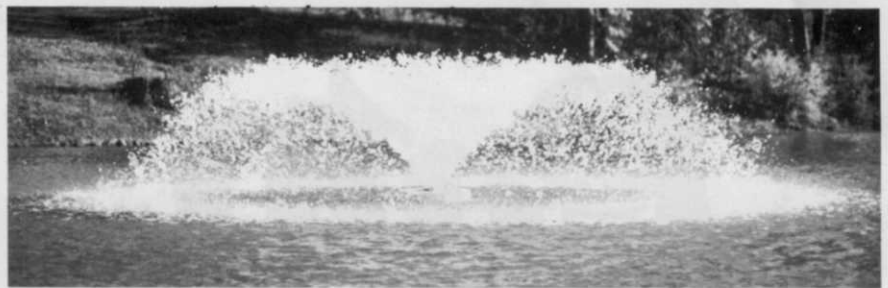
Hydra-Mac, Inc. has introduced model 14C skid steer loader with a 43-horsepower diesel engine and a 1,475 pound operating lift capacity. A dual section gear pump charges the hydrostatic and hydraulic systems.



Front protector gate locks the lift arm in "up" position should operator attempt to dismount the loader with arms in the raised position. The loader also features hydraulically self leveling bucket, operator comfort, and variable capacity radiator which allows for additional cooling elements for operation in high temperatures.

Circle 707 on free information card

A 12-foot rotary hoe, Model 3412, shatters crusty soil, kills weeds, and aerates soil so chemicals are quickly incorporated into the ground. Sixteen spoon-billed, self-sharpening teeth are riveted to each of the 42 21-inch wheels. The wheels turn on sealed ball bearings. Each wheel is suspended on an independent spring



OTTERBINE Spray Sculpture Floating Fountains. Now you can clean up ponds and lakes naturally.

These self-contained water quality improvement systems help you keep unsightly algal growth and objectionable odors under control naturally, without costly chemicals.

And their sparkling spray displays may dramatically change the natural beauty of your ponds and lakes.

For the Otterbine dealer in your area contact:

Rodale Resources Inc.

576 North St., Emmaus, PA 18049 • 1-215-965-6990

Circle 175 on free information card

HYDRO-MULCHER

Dollar for Dollar where quality, performance, and durability count

you can't beat a
Bowie
Hydro-Mulcher



The revolutionary machine for the turf industry that seeds or sprigs, fertilizes, waters, sprays and mulches in one easy operation . . . a totally new method of lawn, turf and ground cover application, plus faster, more effective erosion control.

EXCLUSIVE FEATURES

- Only proven unit for both sprigging and seeding with cellulose fiber mulches.
- Equipped with enclosed shredder bar for shredding full bales of cellulose fibers.
- Centralized tower control with no hoses.
- Equipped with tripple agitators for faster mixing and eliminating sediment build-up.
- Uses pump only for spraying, so pump lasts longer.
- Slurry passes through pump only once, thus reducing seed damage and clogging.

BOWIE INDUSTRIES, INC.

P. O. Box 931 Bowie, Texas 76230 (817) 872-2286

Circle 104 on free information card

Pinto BRAND

WILD FLOWER MIX for NATURAL BEAUTY with LOW MAINTENANCE

Pinto Wild Flower Mix . . . the easy way to beautify any landscape. A blend of wildflowers like Bachelor's Button, Painted Daisy, Foxglove and Black-eyed Susan. A combination of annuals and perennials that requires no mowing . . . and it reseeds itself annually for a lush stand of colorful wildflowers.

Pinto Wild Flower Mix can be used anywhere . . . highways, private homes, waste areas, parks and non-playing areas on golf courses. It's a natural solution for areas that are difficult to mow. And it can be applied with a hydroseeder.

To beautify any area, try Pinto Wild Flower Mix . . . available either as wild flowers only, or mixed with sheep fescue to aid soil stabilization.

Available in 1-acre bags of 4 lbs. (wild flower seeds only) or 30-lb. bags (wild flower/fescue mix).

Pinto is also available in reclamation grass seed mixtures, formulated for hard-to-establish, minimal-maintenance areas.



**Lofts
Pedigreed Seed, Inc.**
Bound Brook, N.J. 08805 / (201) 356-8700

Jacklin Seed Company

Post Falls, ID 83854 / (208) 773-7581

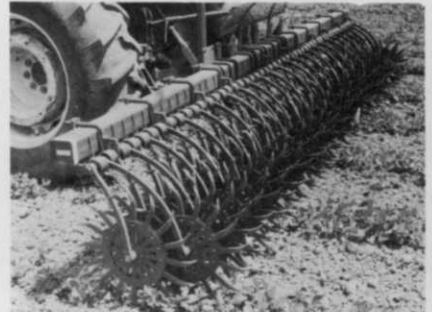


Circle 179 on free information card

Products

from page 99

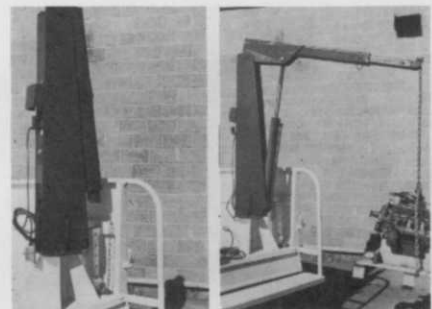
cushioned arm that rises and falls following ground contours and over heavy rocks or other obstructions. The hoe cultivates 30- or 40-inch



rows without adjustment. Its 3-point hitch matches category II, III, and most quick couplers. A safety shield offers operator protection. Yetter Manufacturing Co. makes it.

Circle 709 on free information card

The EH-4 truck crane, an electric/hydraulic model, for use on one ton and heavier trucks, holds 4,000 pounds yet weighs only 350 pounds. A manual extension reaches an additional 15 inches from its max-



imum vertical reach of over 11 feet. The crane stands 64 inches high above the truck bed in the stowed position. The truck's electrical system powers it and a double acting hydraulic cylinder provides both power up and power down to the boom. GS Industries, Inc. makes the crane.

Circle 710 on free information card

Variable length auger extensions from the McMillen Div. of States Engineering Corp. are available to adapt McMillen 6 through 36-inch-diameter augers to most other hydraulic digging heads. They come in two sizes, 24 and 48 inches, both designed to be stored inside the auger shaft, adding 6 inches to the digging depth of the auger. The 24-

Products from page 100

inch extension adjusts in increments of 6 inches. The 48-inch extension's



first increment is at 6 inches with three additional adjustments of 12

inches each. Fully extended, it provides a digging depth of 8 feet with a 4-foot auger.

Circle 712 on free information card

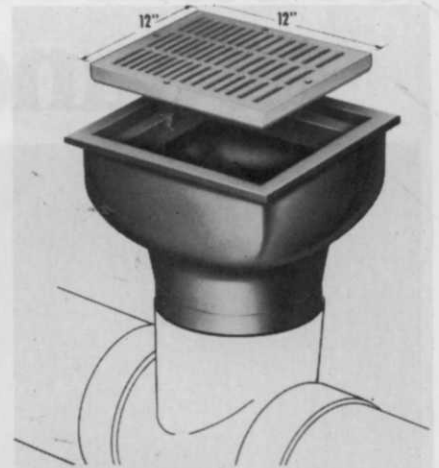
FMC Corp. sprayers have been designed by its Agricultural Machinery Div. for a variety of uses.

Model C005 has a 15-gal., high-density, cross-linked polyethylene tank with 4-in. filler opening and removable drain plug. Its 5-g.p.m. centrifugal pump develops 60 p.s.i. Other features include a 3-hp. engine, bypass agitation, 15 ft. of hose, push handle, parking stand, and rib-type tires.

The 30-gal. Model D003 has a high-density, cross-linked polyethylene tank and positive displacement pump capable of producing 3 g.p.m. at 300 p.s.i. Other equipment includes a relief valve, mechanical agitation, adjustable spray gun with trigger shutoff, 25 ft. of hose, a tow-bar, and push handle. A 5-ft. spray boom is optional.

Circle 711 on free information card

Lightweight yet strong, Spee-D-Tuff grate from National Diversified Sales, Inc., is 12-inches square of



ABS plastic. A standard brick or cement catch basin is not required.

The corrosion- and rust-proof gate installs quickly with fast-drying plastic solvent. Bottom-housing screws stop vandals. It adapts to 8-inch pipe and standard 8-inch tees,



lawn genie®

72" PTO Model



The Pick-Up Mower

Mow smoothly and pick up clippings in one pass! The rugged, versatile Lawn Genie thatches lawns, verti-cuts greens, tees and fairways, sweeps leaves, wades through high weeds and empties easily from the tractor. It's the pick-up mower that cleans, mows and sweeps.



36", 60", 72" cutting widths - with or without loading hopper.

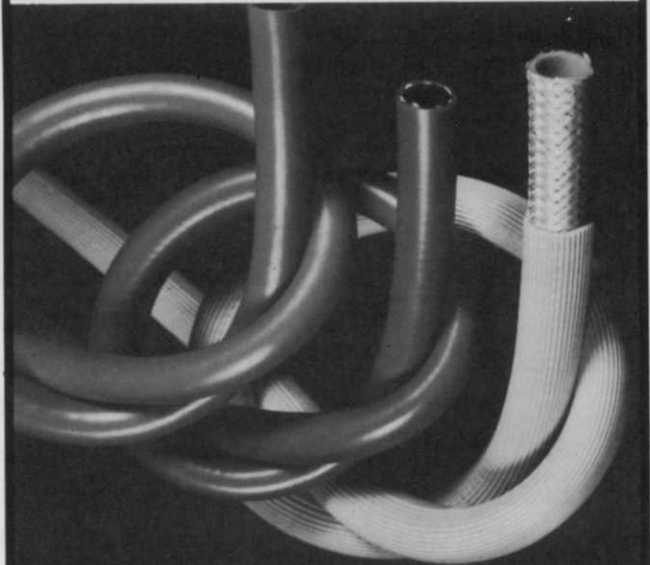


Mathews Company

BOX 70, CRYSTAL LAKE, IL 60014, PHONE: 815-459-2210

Circle 154 on free information card

NOW! ASK FOR IT BY NAME!"



"FLEXISPRA"

HIGH PRESSURE WEED/BUG SPRAY HOSE

- Ideal for sprays, chemicals, air, oil & water
- Withstands up to 800 lbs psi
- Tough, corrugated PVC cover
- Smooth, abrasion-free inner tube for easy flow
- **NEW!** "Supertrel"

Our super-tough spray hose

SEND FOR YOUR FREE NEW CATALOG!

FLEXITUBE INTERNATIONAL CORPORATION

BOX 292, WILLOW GROVE, PA. 19090
TEL: 215 674-8036
TELEX: 834-247 QUICKSHARE PHA

Circle 138 on free information card

Products from page 102

8- and 6-inch corrugated pipe, DWV-size fittings. Adapters allow use of 6-, 4-, or 3-inch pipe or fittings.

Circle 713 on free information card

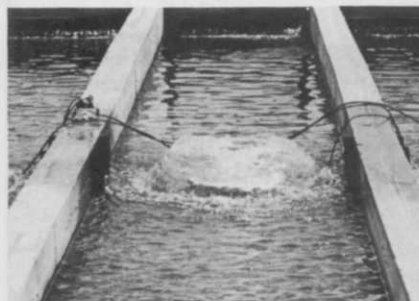
Advanced Drainage Systems, Inc. has available 10, 12, 15, and 18-inch diameter corrugated polyethylene plastic drainage tubing for athletic fields, landscaped areas, and for use



as mains and effluent run-off. The 10, 12, and 15 inch diameters come in 20-foot lengths while the 18 inch comes in 30-foot sections. It is lightweight, easy to install, and strong enough to bear heavy loads.

Circle 711 on free information card

Through continuous oxygenation and mixing, the LSS-100 aerator from Rodale Resources helps control algae and odors naturally, without toxic chemicals. It also provides a sparkling spray display that can



enhance the beauty of a small pond. A 1/20-horsepower motor operates in only 18 inches of water. For installation, simply position the aerator in a pond, then moor or anchor it in place. It comes with 25 feet of underwater power cable and is ready to run when unpacked.

Circle 715 on free information card

Ford Motor Co.'s 755 tractor-loader-backhoe, 8½ tons and 91 horsepower, offers 6¾ tons of loader



breakout force, 5¾ tons of backhoe digging force, and 2 tons of lift capacity to a height of 14 feet.

A turbocharged, 256-cubic-inch diesel engine delivers 91 horsepower to a 3 by 3 full power shift, power reversing, torque converter transmission. The machine holds 39.5 gallons of fuel.

Circle 716 on free information card

Massey-Ferguson has introduced a wide variety of implements for its line of two- and four-wheel-drive compact tractors, the MF205, 205-4, 210, 210-4, 220, and 220-4.

Included are mid-mount and rear-mount mowers, a rotary cutter,



flail mowers, two sickle bar mowers, and two rotary tillers.

One-bottom and two-bottom plows, disc harrows, rear-mounted landscape rakes, row-crop cultivators, planters, box scrapers, a post hole digger, and a front-end loader are also available.

Circle 717 on free information card

A complete, organic, nitrogen fertilizer, Arbor-Green supplies nutrients to shrubs and trees for a full two years. Liquid application of the 30-

10-7 formula promotes strong, healthy root systems. The Davey Tree Expert Co. makes it with no nitrates or chlorides.

Arbor-Green releases slowly because of its fine powder form that



becomes a suspension rather than a solution when mixed with water. When in suspension, it will not leach away, but remains in the soil, releasing nutrients as needed. It can help develop newly transplanted shrubs and trees

Circle 718 on free information card

TreeGARD by Ross Daniels, Inc. expands as it protects trees from sun



scald and animal damage. The vinyl guards extend to 36-in. from the soil line and come packed 200 per case.

Circle 719 on free information card

Scaldis, a hard fescue with plant variety protection, has proven in test over a wide range of conditions to produce a quality turf of good persistence. The Agricultural Service Corp. product has a very dark blue-green color with excellent long-term

Products from page 104

vigor and disease resistance. It has been used successfully under low maintenance situations, such as along roadsides, condominiums, mountain settings, and hillsides where mowing is difficult. It also lends itself well to being used in blends with other quality turf grasses. The fine leaved and dark color is especially desirable with the new perennial ryegrasses and bluegrasses.

Circle 720 on free information card

A heavy-duty stake body helps trucks haul heavy loads. The Reading Body



Works, Inc. body has 14-gauge steel stakes and a 12-foot-long platform of 100-percent, pressure-treated wood. Stakes are reinforced at their base with steel panel at and above the floor line.

Center gates on each side lift and swing out for convenient and safe loading and unloading. A hydraulic hoist with an 8-ton lifting capacity permits easy dumping of loose aggregate, scrap, and materials.

Circle 721 on free information card

Improved front-end loaders are featured on four industrial tractors — the 340, 540 (shown), 445, and 545 — offered by Ford Motor Co.'s Tractor Operations. These models range from 44 to 56 horsepower, and have a wheelbase of 81 inches.

Other features include: easy steering systems, multiple disc brakes, three-point hitch-hydraulics, foot and hand throttles, 16-gallon fuel tanks, two-post or four-post rollover protection (ROPS)



structures and three types of seats with two-way adjustment.

Circle 722 on free information card

A Magnum maul handle is made of high-impact polypropylene molded around a core of fiberglass to withstand damage from overstrikes. The most vulnerable area of the handle is strengthened with extra shock-absorbing polypropylene armor. Collins Axe makes it.

Circle 723 on free information card



“Our TORCO sprayers outlasted and outperformed any other spray units we have tried!”

— Tim Shallcross, Jr.
Greenlawn, Inc.



Durability and dependability are the two main reasons that TORCO lawn sprayers have become the industry leader. If your business is suffering from “down time” and high maintenance costs, find out what our customers like Tim Shallcross already know . . .

TORCO means tough!

TORCO Equipment Company • 207 Eiler Ave. • Louisville, Kentucky • 40214
(800) 626-1818 or (502) 366-1415 (collect in Ky.)

Circle 141 on free information card