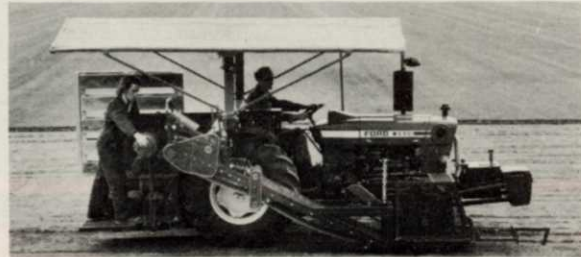


EQUIPMENT

Brouwer Turf Equipment Ltd.

The largest manufacturer of sod harvesters is the Canadian company Brouwer Turf Equipment Limited. A sod producer himself since the mid-60's, Gerry Brouwer began production of the Model A harvester in 1972. Brouwer still farms 1,500 acres of sod in addition to his rapidly expanding equipment business. The unit is designed to either roll, slab or fold and operates off the uncut turf which prevents tracks and turf damage. Brouwer recently announced production of a new line of harvesters, the Model 2000. This unit offers innovative features such as automatic steering, automatic empty pallet loading and four-wall stacking area. It can harvest 2,000 sq. yds. per hour with minimal waste.

Brouwer also makes the light weight Hitch-Hiker fork lift, a side-unloading grass collector, a turf roller, and PTO gang mowers. The company recently established a sales office in Europe to meet sales and service demands of overseas sod producers.



Model 2000 is the newest Brouwer harvester featuring automatic steering and empty pallet loading (top). Model A harvester is used by more sod producers than any other harvester.

Keep plantings, trees, shrubs, sod and indoor plants healthy with

WILT PRUF

ANTI-TRANSPIRANT



WILT-PRUF, the proven anti-transpirant for over 30 years, protects against plant damage due to winter kill, transplant shock, wind burn, drought and air pollution. WILT-PRUF forms a protective coating holding in moisture on plant stems and foliage substantially reducing water loss during periods of excessive evaporation.

WILT-PRUF meets FDA specifications for use on edible crops; is 100% organic and biodegradable. Comes in convenient sizes: Pint, Quart, Gallon, 5-Gallon, 55-Gallon and 16-oz. Redi-Spray can.



For more information call or write Dep't WTT
WILT-PRUF PRODUCTS
Formerly Nursery Specialty Products
P.O. Box 4280, GREENWICH, CONNECTICUT 06830
From the makers of SPRAY-STAY Sticker-Extender

Write 122 on reader service card