

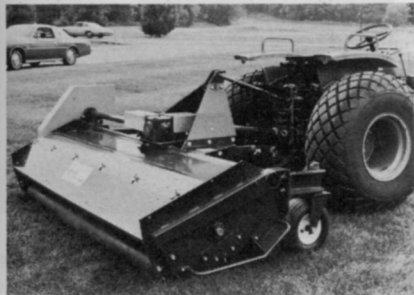
WT&T PRODUCTS

New Mower Models



Commercial trim mowers by Lawn-Boy were introduced in August for professional lawn maintenance and landscape contractors, rental services, and municipal use. All three of the new models have 6-in. front and 8-in. rear steel wheels with greasable ball bearings; full interface hubs; heavy gauge handles and handle brackets; five quart fuel tank; and a die cast aluminum carburetor equipped with heavy duty air filter. The models also feature fingertip height adjustment; heavy, die cast aluminum deck, and solid state ignition. Two push and one self-propelled models are available which cut a 21-in. swath.

Circle 701 on free information card



Two new sized models of the Lawn Genie Pick-Up flail mower have been introduced by the Mathews Company. The new 48-in. and 88-in. models mow, sweep, mulch, chop, shred and thatch for complete lawn care. The 48-in. is available in three styles: a 16 hp Briggs & Stratton engine driven pull-type; a PTO-driven pull-type for a 15 hp tractor; and a PTO-driven lift-type with Category 1, three-point hitch for trac-



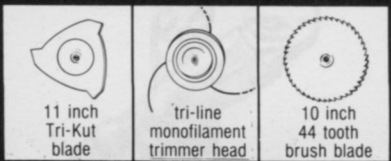
HOFFCO TM Whizz Witch

A tough 85cc engine stands behind trimming head and 2 cutting blades.

- Tri-line, heavy duty monofilament trimmer head.
- 11" Tri-Kut weed blade cuts heavy weeds, briars and brambles.
- 10" 44 tooth brush blade (optional) cuts 3" diameter saplings at ground level.

BRUSHCUTTER/POWER SCYTHE

Offers the same equipment package, but the trimmer head is optional.



The 2 cycle, 22.5cc engine, can be operated in any position. Total wgt. 13½ lbs.

1. Monofilament trimmer head
2. 8" Tri-Kut blade
3. (optional) 8"-44 tooth brush blade

HOFFCO TM genie



HOFFCO ^{T.M.} Brushette

Special merchandising displays available.

CHAIN SAW ATTACHMENT

Also attaches easily to most light-weight chain saws. • 8" Tri-Kut weed blade • 8" 44 tooth brush blade • optional monofilament trimmer • Use for overhead tree and brush trimming.

HOFFCO'S "HUMAN ENGINEERING"

The carrying harness and handle-bars with anti-vibration grips can be adjusted for the comfort, balance and separates operator from cutting and trimming heads.



WPT-1079
358 N.W. "F" Street
Richmond, IN 47374

HOFFCO PH 977-A

A true ONE MAN post hole drill Full wrap-around handles *deadman throttle control and kill switch on handle *Comet auto *centrifugal clutch *18.1 power ratio 2 to 8" earth bits *8" ice bit available. Drill to 30" (4' with extension accessory).

HOFFCO PH 1100-A 2-man

4-cycle engine. Special throttle control and auto. centrifugal clutch.

... clip coupon and we'll send you free brochures and the name of your nearest dealer

- ___ P10-A—85cc, Power scythe/Brushcutter*
- ___ Whizz witch—85cc*
- ___ Genie—22.5cc*
- ___ Aladdin—22.5cc, monofilament trimmer
- ___ GT-14—14cc, monofilament trimmer
- ___ Brushette—CSA*
- ___ Trimette—CSA-monofilament trimmer
- ___ Post Hole Drills—one and two man units
- ___ Whizz winch—Pulls loads to 1,000 lbs.

*Combination Unit—Power Scythe • Brushcutter • Monofilament

NAME _____

ADDRESS _____

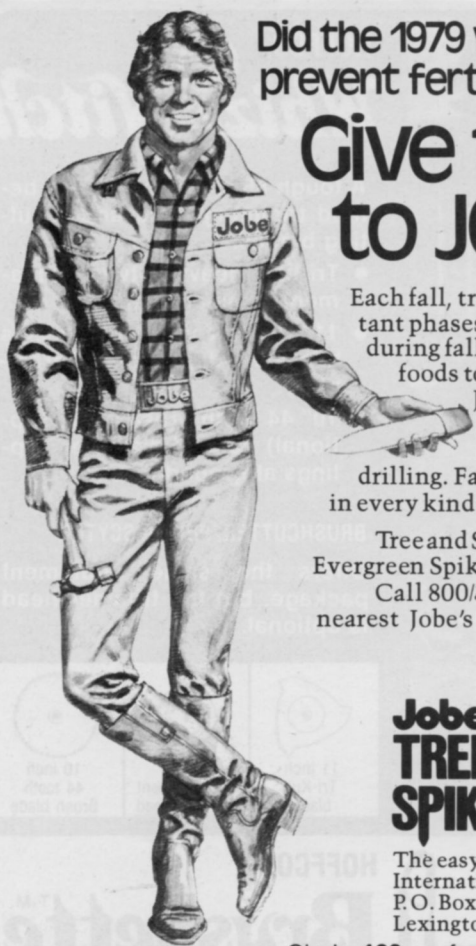
CITY _____ STATE/ZIP _____

Circle 108 on free information card

OCTOBER 1979/WEEDS TREES & TURF

Did the 1979 wet spring prevent fertilizing your trees?

Give the job to JOBE.



Each fall, trees start one of the most important phases in their life cycle. Roots grow during fall and early winter, absorbing plant foods to use for early spring growth.

Jobe's Tree and Shrub Spikes feed trees in about one fourth the time, at less than half the cost of drilling. Fast ... efficient ... less costly ... in every kind of soil.

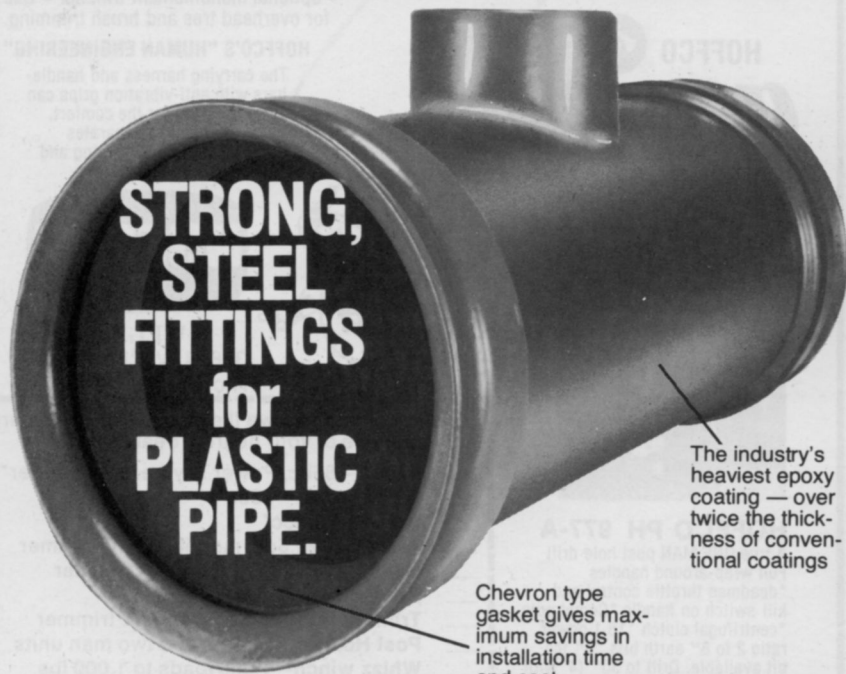
Tree and Shrub Spikes analyze 16-8-8; Evergreen Spikes 12-6-8. Fruit Tree Spikes 5-15-15. Call 800/354-9360 for the name of your nearest Jobe's distributor.

Jobe's... TREE & SHRUB SPIKES

The easy method for professional tree care.
International Spike, Inc.
P.O. Box 1750
Lexington, KY 40593

Circle 168 on free information card

When a turf system needs...



**STRONG,
STEEL
FITTINGS
for
PLASTIC
PIPE.**

The industry's heaviest epoxy coating — over twice the thickness of conventional coatings

Chevron type gasket gives maximum savings in installation time and cost

McDowell EPOXI-LOKT
McDowell Manufacturing Company, An Alco Standard Company, DuBois, PA 15801 • 814/371-6550

Circle 157 on free information card

tor 13-20 hp. Each model has a 22-bushel metal hopper for clippings. The 88-in. model is designed as a mower only and does not have a hopper. Mathews says the mower is a strong performer on roadsides, parks or large acreages.

Circle 702 on free information card



Fifteen-ft., all-hydraulic rotary mower has been designed by Howard Price Turf Equipment for large turf mowing. Powered by a 68 hp, four-cylinder Ford water-cooled engine, the mower has three cutting units which may be operated individually or in any combination. The Hydro-Power 180 has rear power steering, two speed ranges up to 18 mph, and hydraulic transmission. With a cab, heater and 66-in. snow blower, the mower becomes a year-round machine.

Circle 703 on free information card



New mid-size mower by Excel offers maneuverability in a 60-in. rotary. The new patented design mowing deck features a system of built-in adjustments that permit the mower to mulch, discharge to the rear or side or into an optional catcher/compactor. The mode of discharge is easily and quickly changed. The mower deck and engine are mounted on a single floating deck to maintain in-line power. The mower has a 16 hp Briggs & Stratton twin cylinder engine.

Circle 704 on free information card