

PRODUCTS

Garlon 3A liquid amine herbicide controls woody plants and broadleaf weeds on rights-of-way and industrial sites. It is also useful in preparing forest sites, according to Dow Chemical U.S.A.

The herbicide handles more than 10 species of common annual and perennial broadleaf weeds and is active against more than 35 woody species, including ash and oaks.

Used at recommended rates, Garlon is non-injurious to grasses and helps prevent soil erosion in brush control programs. It has a short residual in the soil and relatively low toxicity levels to fish, mammalian wildlife, and non-target plants.

For woody plant control, 2 to 3 gal. of Garlon should be applied in 20 to 100 gal. of water an acre. For broadleaf weed control, 1/3 to 1 1/2 gal. of Garlon is suggested for 20 to 100 gal. of water an acre.

Circle 701 on free information card



Pennfine perennial ryegrass and Roundup herbicide from Monsanto have combined capabilities to provide an effective program for renewing or renovating existing turf areas.

Roundup destroys a variety of annual and perennial grasses and broadleaf weeds. Because Roundup leaves no residual soil activity, Pennfine can be spread over the treated area in about seven days after the herbicide application. It germinates quickly and grows into a dense, full stand of grass.

A test kit contains instructions and enough Roundup and Pennfine to renew approximately 200 sq. ft. of turf.

Circle 702 on free information card



Two all-terrain forklifts with Massey-Ferguson industrial tractor power units have been introduced by Harlo Products Corp. The 4,000-lb. capacity

HECKENDORN's Economical 72" Riding Mower has increased cutting power

Modifications include:

- Even greater cutting power--bigger engine w/electric start, more horsepower and torque;
- Larger spindles;
- Easily replaceable drive sprocket;
- Redesigned instrument panel;
- Comfort, shock mounted seat.

PLUS HECKENDORN standard features;

- Zero turn radius;
- Hinged sidemount units follow ground contours allowing trim to within 1/2" of obstacles;
- Rugged construction;
- Easy maintenance.



Economically priced, used for tough cutting jobs.

For new GSA #, dealer name or product literature, please call or write.

Industrial Grounds Maintenance Equipment
HECKENDORN
 MANUFACTURING CO., INC. / Cedar Point, KS 66843 316 / 274-4201

Circle 137 on free information card

H-30 forklift and the 5,000 and 6,000-lb.-capacity H-50 are powered by 45-hp. and 62-hp. Perkins diesel engines, respectively.

Both models feature heat-treated forks, instant reverse transmissions with torque converters, hydraulic side shifters, and deluxe operator seats.

The machines also provide differential locks for additional traction, planetary drive axles to reduce wear on drive components, wet disc brakes, complete hydraulic operation, and FOPS. Both forklifts are counterweighted and completely tested.

Masts come in 10½, 14, and 21½ ft. lift heights for the H-30. The H-50 provides 21½ and 28 ft. lift heights with 5,000-lb.-capacity. On the 6,000-lb.-capacity H-50 lift heights of 12 and 14 ft. are standard.

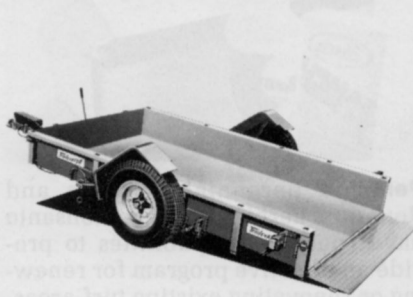
Circle 703 on free information card

Landglas from Owens-Corning Fiberglas contains eroding highway embankments, shoulders, and ditches. It helps beautify construction sites, eliminates unsafe adja-

cent areas, and greatly reduces the run-off silt and surface debris that contributes to pollution of water resources. No need for repetitive treatment with expensive materials.

The strand is applied most effectively with a special gun or else a standard straw mulcher unit. It comes in 1-ft.-high packages, weighing 35 to 40 lbs.

Circle 704 on free information card



For efficient load hauling, Trailevators from Magline Inc. lower to ground level for fast loading and hydraulically elevate the load to towing position in seconds. Eliminate need to lift heavy loads; simplify loading of large, bulky items; improve on-the-job safety; and reduce handling and hauling costs.

The trailers hold either 2,000 or 3,000 lbs. and come in bed sizes from 60 in. wide by 8 ft. long to 70 in. wide by 10 ft. long. Surge hydraulic brakes are standard on 3,000-lb. models; manual, double-acting 5,000-p.s.i. hydraulic pump is on all models. Optional equipment includes electric brakes, 3-in. forged lunette eye couplers, cargo restraints, and electric hydraulic pumps.

Circle 705 on free information card



Field Boss tractors from White Farm Equipment Co. are powered by 3-cylinder diesel engines. Model 2-30, rated at 27 PTO hp., utilizes a 91-cu.-in. displacement diesel; Model 2-35, 31 PTO hp., has 108-cu.-in. displacement.

Compact size of both tractors suits running augers and generators,

WIRE & PIPE LOCATOR 'TRACKER II' by PEI

MODELS 500 LP & 500 HP

Locates - -

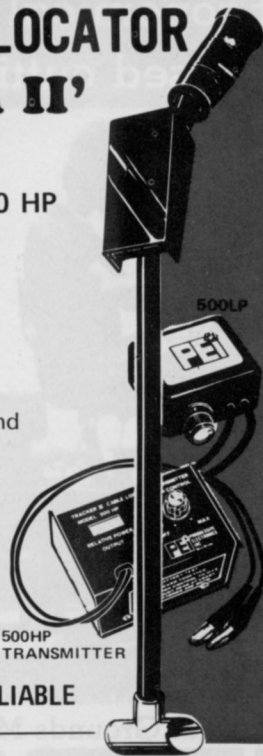
Opens/Shorts in Buried,
Covered or Sheathed
Wires

Tracks - -

Wire or pipes underground
and in walls

- Variable Power Transmitter
- Will operate on active or dead wires
- No earth grounds required

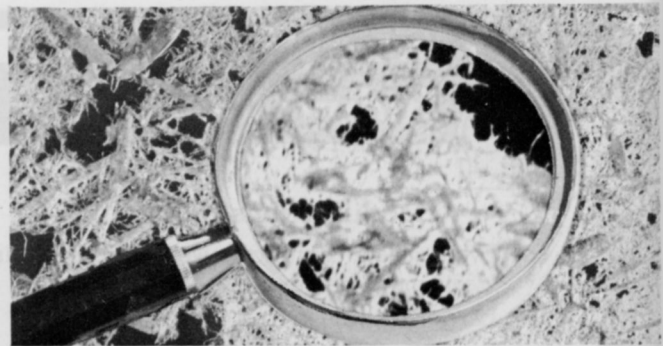
LOW COST - ACCURATE - RELIABLE



Products Designed With You in Mind . . .

PEI PROGRESSIVE ELECTRONICS INC.
432 S. Extension, Mesa, Arizona 85202
(602) 834-4308 or (800) 528-8224

Circle 121 on free information card



Macrophoto of "J-tac" soil stabilizing film.

J-tac™

Soil and mulch tackifier

For Better Revegetation

J-tac provides a means of interlocking surface soil particles with seed, mulch and other additives used in revegetation projects. Helps resist erosion (wind, or rain) and movement of seed during critical establishment period.



RECLAMARE COMPANY

20727 7th Avenue South Seattle, WA 98148
206-824-2385

Circle 138 on free information card

mowing roadsides and headlands. Four forward gears and one reverse work in harmony with a Hi/Lo range selector to produce eight forward and two reverse speed ranges. With Model 1010 loader, each tractor maneuvers easily to clear feedlot areas or alleyways and remove snow and landscape.

Standard features include complete gauge indicator lights; adjustable, padded seat; differential lock; and working headlamps, rear safety lamps, and flashing warning lamps. There is also a live 540-r.p.m. PTO, two-stage clutch control; power steering; Category I three-point hitch; adjustable four-position rear wheels; and five-position front axle.

Circle 706 on free information card

An asphalt replacement tackifier, the Terra Tack AR, substitutes for asphalt emulsion as a straw tackifier. Clean-up and maintenance of the Grass Growers, Inc. product takes a simple rinse with water.

Circle 707 on free information card



Vermeer Manufacturing Co. has introduced Model LM-20 compact riding plow-trencher.

As a lawn plow, it installs pipe and wire of 1/4 in. dia. to 15 in. deep with little surface disturbance. It may also be equipped with a 15-in. wide front-mounted reel carrier.

The trencher attachment digs 24 in. deep and 6 in. wide. Dual augers place the soil to both sides of the trench for easy restoration and a 42-in. front-mounted backfill blade fills in the dirt.

The 19.5-hp. unit is powered by an Onan NHB-MS gas engine coupled to a Sundstrand hydrostatic

drive and reaches ground speeds of 0 to 255 f.p.m., forward or reverse. It weighs 1,600 lbs. and is less than 36 in. wide with a wheelbase of 45 1/2.

Circle 708 on free information card



SK58 sinker from Stanley Hydraulic Tools uses air or water to clear holes from 1 to 3 in. dia. and up to 20 ft. deep, easily penetrating rock or concrete.

Direct drive rotation adjusts from 0 to 300 r.p.m. and is independent from its impact rate of 2,500 blows per minute. A feathering valve makes for easy starting. Comes with an integral hydraulic motor and is available in both open and closed center models. It weighs 65 lbs. and accepts standard steel bits.

Circle 709 on free information card

WATER PENETRATION

AQUA-GRO®

**THE KEY
TO MORE SUCCESSFUL
GROUNDS MAINTENANCE**

REDUCED WATERING • FASTER RESPONSE TO FERTILIZATION AND PESTICIDE CONTROL
• REDUCED LABOR COSTS • ELIMINATE PUDDLES AND DRY SPOTS • REDUCED PROBLEMS WITH THATCH • HEALTHIER AND HEARTIER TURF.



Shallow rooted turf, poor moisture distribution from area not treated with Aqua-Gro amended water.



Deep rooted turf, good moisture distribution from area treated with Aqua-Gro amended water.

Aqua-Gro is available in liquid concentrate or spreadable granular. For additional information write to:

AQUATROLS CORPORATION OF AMERICA

1432 Union Ave. Pennsauken, New Jersey 08110 (609) 665-1130

Circle 139 on free information card