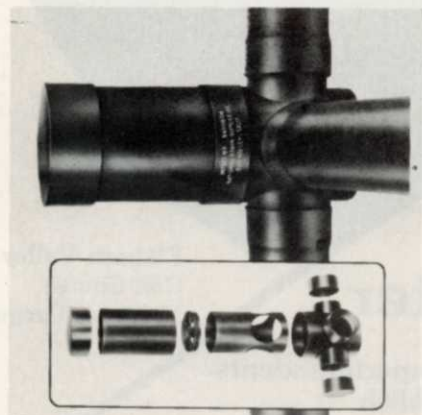


# Products



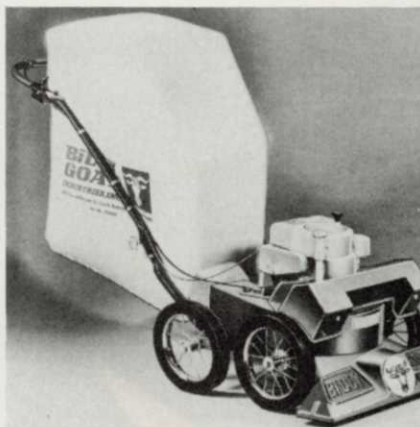
**Massey-Ferguson introduces** the new-from-the-grass up MF 1450 and MF 1650 tractors. Both are designed for a wide variety of lawn care jobs. A 650 lb. capacity, 3-point hitch and rear PTO are available as options. At 14 and 16 hp, they come with hydraulic implement lift and front belt-driven implement device.

Circle 701 on free information card



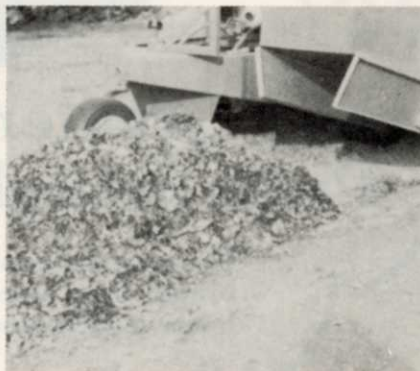
**National Drain Supplies** has a new Spee-D-Valve diverter valve molded in ABS plastic. Spee-D-Valve consists of a four-way distribution box, diverter valve stem, diverter valve shield, valve shield cap and outlet caps. Three interchangeable diverter valve stems permit positive flow control from the distributor box to any combination of one, two or all three outlets. For use in irrigation and drainage systems as well as septic tank leach field control.

Circle 702 on free information card



**Billy Goat introduces the KD-50SP** model suction sweeper with free wheeling in neutral and a "dead-man" clutch for added safety. Self-propelled chains provide power takeoff from engine to axle, adjustable height levels for various terrain, handlebar controls. The KD-50SP is powered by a 187 CC's Briggs and Stratton gas powered engine.

Circle 703 on free information card



**Hustler's new Catcher/Compactor** simplifies disposal of grass clippings and lawn debris without the use of auxiliary power or noisy blowers. It relies on tractor drive wheels for paddle conveyor power.

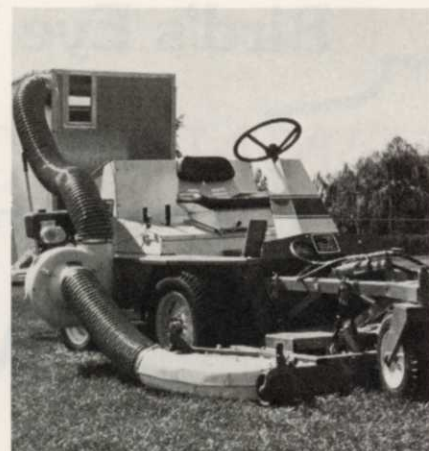
Circle 704 on free information card

**Vandermolen Corp. announces** a new 27 in. DRIFTMASTER with 5.5 gal. capacity to allow coverage of 5



to 6,000 sq. ft. Weed killer is applied to the ground by a ribbed roller.

Circle 705 on free information card



**A new turf vacuum** that uses an independent power source is now available from Jacobsen as an attachment to their Out Front Commercial riding rotary mower. The "Turf Vac" has a 1-cu. yard hopper that attaches to the back of the Out Front Commercial and a 7 hp Kohler engine that attaches to the machine's right side. Power is ample for picking up small debris as well as clippings and leaves. Noncorrosive materials are used wherever moisture might be a problem.

Circle 706 on free information card