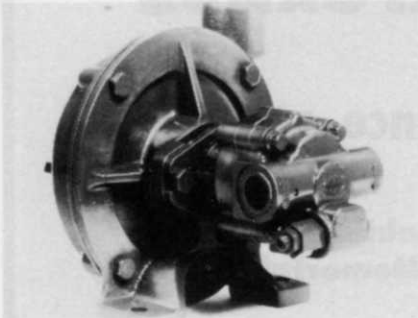


Products

The non-spill coupler from Metro Hydraulics, Inc. has the lowest pressure drop characteristics of all quick-connect-disconnect under



pressure couplers. This convenience works with a flush seal to avoid leaks of fluid loss and helps the device connect and disconnect under full pressure. It measures 1/2 inch and finds use on any OEM design.

Circle 701 on free information card

Bush Hog now features a new grass mower constructed of 7-gauge steel, double metal thickness around its bearing box and 2 taper roller bearings. It also boasts of 3 high-strength suction blades and 2 belts



which reduce belt stretch and a flat front idler pulley. Manufactured in both rear and center mounting designs, the mower cuts a width of 60 inches with a cutting height of 1 to 5 inches.

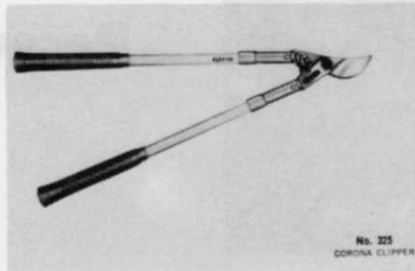
Circle 702 on free information card

The Miralinks plastic chain from Mercury Products Corp. provides both protection and direction for outdoor applications. Made of

colorful plastic forged from a special polyethylene formula, the chain requires no maintenance as well as being non-conductive and rustproof. It's available in a wide variety of colors which withstand rigors of weather and time and supports any message provided such as "walk here," "keep of the grass" or "golf cart area."

Circle 703 on free information card

Corona Clipper Co. is introducing a new No. 325 lopper designed to prune with less fatigue and greater ease. The product uses fiberglass handles which are bolted on to a



drop forged cutting head. Vinyl hand grips come in different colors and a neoprene shock absorber adds to its convenience. It's also smooth and lightweight.

Circle 704 on free information card

The centrifugal pump/hydraulic motor by Delavan Mfg. Co. can convert energy into power to pump agricultural chemicals and solutions. Using larger rigs, its pump has higher volume for tank agitation and boom delivery. Its cast iron structure and glass filled nylon assure long performance of its impeller. Delavan also replaced the traditional lip seal with a mechanical face seal which controls pressure "spikes" usually handled by a manual shutoff valve. The tractor control levers can shut the pump down so extra valves are unnecessary.

Circle 705 on free information card

Dedoes Industries, Inc.

1060 W. WEST MAPLE WALLED LAKE, MICH. 48088
(313) 624-7710

DEDOES AERATOR DISTRIBUTOR LIST

Alabama Birmingham Montgomery	Tieco Tieco
Arizona Phoenix Tucson	Lawn & Garden Supply Co. Lawn & Garden Supply Co.
California Burlingame Sacramento San Diego	Toro Pacific Distributing Brady-Holmes Co. Toro Pacific Distributing
Colorado Denver	The Barteldes Co.
Connecticut South Windsor	Turf Products Corp.
Florida Hollywood Jacksonville Tampa Pensacola	Debra Turf Equipment Zaun Equipment, Inc. Debra Turf Equipment Gulf Shore Turf Supply, Inc.
Georgia Conyers	Lawn & Turf, Inc.
Idaho Boise	Cliff Carlson Co.
Illinois Evanston Itasca	Roseman Tractor Equipment Co. Toro Distributing
Indiana Fort Wayne Indianapolis	Summit Power Equipment Dist. Kenney Machinery Corp.
Iowa Iowa City	Little Wheels, Ltd.
Kansas Wichita	Champion Turf Equipment, Inc.
Kentucky Nashville, TN	Central South Turf, Dist., Inc.
Maine South Portland	Yerxa's, Inc.
Maryland Baltimore Silver Spring	Adams Equipment, Inc. Adams Equipment, Inc.
Massachusetts West Newton	The Clapper Co.
Michigan Birmingham Grand Rapids	W. F. Miller Garden & Lawn Equip. W. F. Miller Garden & Lawn Equip.
Minnesota Minneapolis	Minnesota Toro, Inc.
Missouri Chesterfield Kansas City Springfield	Beckmann Turf & Irrigation Supply Champion Turf Equipment, Inc. Champion Turf Equipment, Inc.
Montana Billings	Turf-Aid, Inc.
Nebraska Omaha	Midwest Toro
New Jersey Westfield	Storr Tractor
New York Brewster Hamburg Latham Syracuse	The Powerhouse Eaton Equipment Corp. Grassland Equipment & Irrigation Haverstick Golf & Tractor, Inc.
North Carolina Shelby	Porter Brothers
Ohio Tiffin	Earl J. Crane, Inc.
Oklahoma Oklahoma City	Paul Blakeney Company
Oregon Portland	Baltz & Son Co.
Pennsylvania Philadelphia Pittsburgh	Farm & Golf Course Supply Co. E. H. Griffith, Inc.
Tennessee Memphis Nashville	Turfaid, Inc. Tieco
Texas Dallas Houston San Antonio	Watson Distributing Co., Inc. Watson Distributing Co., Inc. Watson Distributing Co., Inc.
Utah Salt Lake City	Cliff Carlson Co.
Virginia Richmond	Richmond Power Equipment Co., Inc.
Wisconsin Chilton Pardeeville	Horst Distributors, Inc. Northern Turf Equipment, Inc.
OUTSIDE THE U.S.	
Ontario Burlington	Duke Lawn Equipment, Limited
Quebec Quebec	Spramotor, Limited
Sweden Rimbo	Industri Belos, AB