



JETPAK
425

SOLO ENDS YOUR SPRAYER HEADACHES

Tired of sprayers that corrode, drip...
Seals that dissolve... Valves that shrink
or swell?

The SOLO all-plastic sprayers stand up to all
agrichemicals in water or oil solution. Includ-
ing your most exotic weed and brush killers.
No rubber or metal comes into contact with
the formula.

Made for commercial use, by the world's
oldest and largest manufacturer of portable
high-concentrate mist blowers, SOLO's
manually-operated sprayers are still attractively
priced for the semi-pro and casual markets.



HANJET
455

The HAN-JET-455 is an
all-purpose sprayer for
gardening, weedkilling,
sanitation and many other
outdoor and indoor appli-
cations. It weighs a mere 3
lbs and sprays its entire
1.3-US-gal. contents after
just one pumping.

The famous JET-PAK-425
is surely your best buy for
all casual-to-professional
spraying jobs at any de-
sired pressure from 0 to
90 psi. Ten pump strokes
deliver one quart of liquid.
Ideal for no-drift herbi-
cide spraying at low pres-
sure. Used extensively in
the tropics for more than
ten years — a product of
mature design and ex-
treme reliability.

SOLO supplies a wide line of sprayers,
blowers, chain saws, tillers and other
types of outdoor power equipment. We
invite dealer and distributor inquiries on
all of these products.

SOLO

BOX 5030, NEWPORT NEWS
VA 23605 — (804) 245-4228
BOX 464, BURLINGTON,
ONTARIO L7R 3Y3

Circle 156 on free information card

Tree Evaluation Guidelines Get Green Industry Push

A public relations program being
underwritten by the International
Society of Arboriculture, National
Arborist Association, American
Association of Nurserymen and the
American Society of Consulting Ar-
borists is intended to bring to the
attention of homeowners and others
the value of trees. One of the per-
sons charged with this campaign is
Frederick R. Micha, Monroe Tree
& Landscape, Inc., Rochester, N.Y.

"One of the purposes of our
committee is to work with insurance
companies to see if they can up-
grade some of their principles they
have written into insurance laws and
regulations," he told WEEDS
TREES & TURF. "Primarily the
biggest thing is the loss of an indi-
vidual tree or plant, compensation
for it. \$250 now stands for the basic
homeowner's policy. But we have
gotten it raised to \$500 in six states

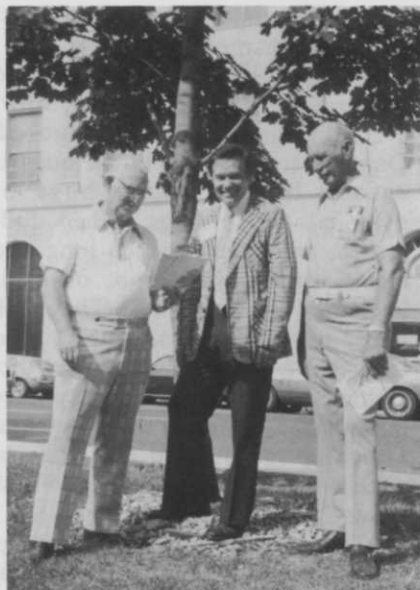
as a trial balloon, and it may go even
further.

"The next big battle that we
started is with the Internal Revenue
Service," he said. "As it stands now,
our shade tree evaluation tech-
niques and our formula for ap-
praising trees is not acceptable un-
der IRS rules. They call it a hypo-
thetical formula, and we feel that is
unfair. That is another hurdle that
we are going to have to try to
change."

"We have already finished our
third phase of this program," he
said. "That was redoing the ap-
praisal techniques of shade tree



*This Guide to the Professional
Evaluation of Landscape Trees, Spec-
imen Shrubs and Evergreens has been
revised and is a tool used by qualified ar-
borists and nurserymen to place a
monetary value on trees.*



*Dr. L. C. Chadwick (left), director
Emeritus of the International Society of
Arboriculture, with Frederick R. Micha,
Rochester, N.Y., and Ray Gustin Jr.,
Silver Spring, Md. These three were part
of the committee to update evaluation
guidelines and to spearhead a publicity
campaign across the country about tree
evaluation by experts.*

values. We took the guts out of our
old guidelines and completely
revised it. "We made it stronger
because the man that now has the
booklet has to be horticulturally
trained as a plantsman to use it."

The committee consisted of Dr.
L. C. Chadwick, director Emeritus
of the International Society of Ar-
boriculture; Dr. Spencer H. Davis
Jr., New Brunswick, N.J.; Ray
Gustin Jr., Silver Spring, Md.; and
Micha. They worked with Valteau
C. Curtis, Callicoon, N.Y., of the
American Association of Nursery-
men. For further information, con-
tact Micha at Monroe Tree & Land-
scape, Inc., 225 Ballantyne Road,
Rochester, N.Y., (716) 432-2900. □