

# New Products

A tree replanter accessory for loaders and tractors has been introduced by Del Zotto Mfg. Inc. The "Hydra-Brute" features a curved-spade design that makes maximum use of available hydraulic power. Other features of the unit, according



to the manufacturer, include an ability to be attached or detached in minutes, quick-couple to available hydraulic-accessory circuits, operate at maximum without outriggers or other accessories, exert more than four tons of pressure to dig in the hardest earth, ball a tree for basket or burlap sacking and load or unload trees from truck-bed heights.

An edger attachment is new for the "Hustler" mower from Excel Industries, Inc. The edger is fast, clean, quiet, easy to use, maintain and store and can be mounted on the mower deck, according to the manufacturer. Because the edger does not hang over the trimming



side of the deck, it is safer than most power edgers, the company said. The broom/scraper attachment for the edger makes trimming tough grasses and weeds easy.

New tee markers on the market from Lesco Products are made of cyclolac plastic, the same material used for



football helmets. The markers are standard five-inch diameter and cemented with epoxy glue. They float and come in red, white and blue colors.

TRIM-IT, a new weed-cutting, grass-trimming machine, utilizes a flexible filament of nylon and stainless steel. It offers total safety — and



gets up close to all jobs. It cuts and trims under benches, bushes, in vines and ground cover, around grave markers, sand traps, chain link fences and any area where operator needs upclose trimming. It operates vibration-free.

A new technical booklet containing complete application and handling information on Sevin 4-Oil carbaryl insecticide is now available from the manufacturer, Union Carbide Corp. The bulletin describes the product's uses, chemical and physical properties, toxicology and special characteristics of importance to users. Sevin 4-Oil is a new oil-based dispersion of Sevin carbaryl insecticide which provides longer residual insect control and affords certain application advantages, according to Union Carbide.

Metal chemical containers for insecticides or herbicides should be



crushed, according to the National Agricultural Chemicals Association. Richway Products is now manufacturing a can crusher that crushes all kinds of metal containers. The unit operates hydraulically and flattens a five-gallon can down to about two inches in a single stroke.

A backhoe/loader, the 580C Construction King, is new from J I Case Co. The unit incorporates a



number of features to improve productivity and serviceability, according to the manufacturers. Two of the most significant are a shock-absorbing unitized main frame and a componentized power train, which permit servicing of individual components without disturbing the rest of the drive line.

Got a problem with

# SAND?

Sand in your water.

Now there's an easy, low-cost way to take sand out of your water. With a Laval Separator. There are no screens, no filters, no backflushing, no maintenance or cleaning. Just results.

There's a Laval Separator for every purpose. For farms. For sprinkler systems. For schools. For irrigation systems. For submersible and turbine pumps. For industry. For you. Whoever you are. Write us now and we'll send you complete information.



1899 N. Helm, Box 6119, Fresno, CA. 93727, Dept. 776

Circle 110 on free information card



with **NITROFORM®** and save!

W.I.N. with Nitroform® nitrogen . . . and save! In lower cost per pound of W.I.N.



**Knox Fertilizer Bags It**



Turf and Horticultural Products  
Wilmington, Delaware 19899  
STH76-12

Circle 146 on free information card

A new model of the T-600 Trencher series, featuring a number of machine improvements, has been announced by Vermeer Mfg. Co. The new T-600C track-mounted



trenching machine now offers the Detroit 4-53 diesel engine as an additional option. Two major improvements are incorporated into the new machine — greater track clearance and enclosure of the final trencher drive in an oil-filled case.

Circle 708 on free information card

A broadcast seeder-spreader series has been introduced by Herd Seeder Co. Inc. The series has eight units,



the top of the line being the model 2440, which comes standard with hydraulic remote control as shown. An eight-page catalog is available.

Circle 709 on free information card

Stauffer Chemical Co. has made available new information bulletins designed to aid in pesticide selection. Each bulletin discusses, in chart form, one type of pest and its control. One bulletin deals with insecticides, a second with fungicides and the third with herbicides.

Circle 710 on free information card

Owners of the John Deere 8430 and 8460 4WD tractors can now mount and use the Waldon 10 1/2-inch dozer



blade with the new mounting kit available from Waldon, Inc. The unit features solid mounting to the tractor frame, direct hydraulic cylinder hook-up, reversible and replaceable cutting edge and dual cylinder operation.

Circle 711 on free information card

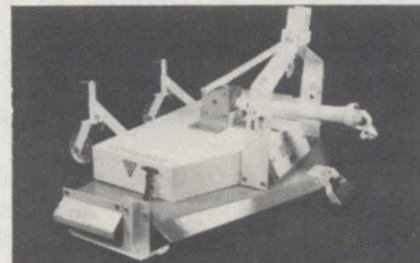
A serrated 16-inch disc harrow is now available for Economy Trac-



tors, according to the manufacturer, Engineering Products Co. The harrow and other rear-mounted tools are attached in minutes by means of a standard three-point hitch. It is not necessary to remove front-mounted tools when using rear-mounted tools.

Circle 712 on free information card

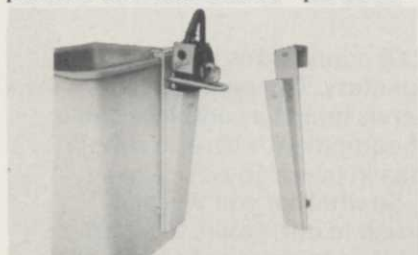
Rear-mount grass mower featuring a gear-box drive has been introduced



by Sun-Mastr Corp. The unit was specifically designed for use with smaller tractors in the 16 to 30 PTO horsepower range. The unit also features drop-design blades.

Circle 713 on free information card

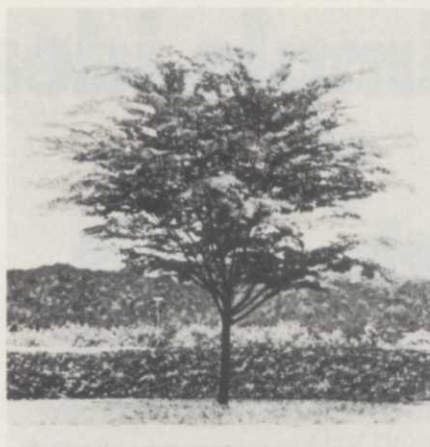
A chain saw scabbard that will accommodate gasoline and hydraulic power saws with blades up to 36 inches



ches has been introduced by Hastings Fiber Glass Products. Made of the non-conductive reinforced fiber glass, the scabbard mounts readily on trucks and buckets for quick and easy access to the saw. The scabbard has an overall length of 36 inches with the top opening measuring 3 inches by 5 3/4 inches.

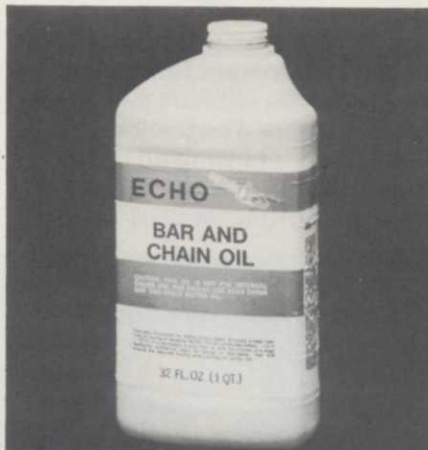
Circle 714 on free information card

A new elm that is as beautiful as the American elm but immune to Dutch elm disease is being offered to nurserymen, land developers and landscapers by Sheerlund Forests. The Sheerlund elm — botanically known as *Zelkova serrata* — is a majestic, useful tree for homes, parks, golf clubs, cemeteries and other locations. It offers a wine glass shape and grows up to three feet a year.



Circle 715 on free information card

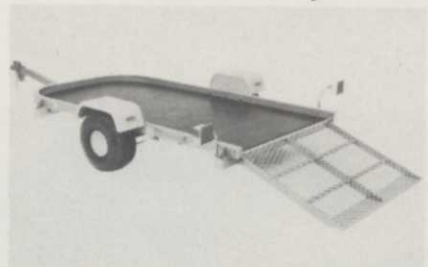
Bar and chain oil contains a special additive designed for most lubricate applications has been introduced by the Echo Chain Saw Division of Kioritz Corp. of America. The ad-



hesive and tackifying properties which have been previously primarily utilized in greases, spindle oils and gear oils.

Circle 716 on free information card

The Snow Co. has published a price list for its utility trailer with loading ramp. The listing includes prices for the trailer, bracket, spare tire



mounting, tongue stand with retractable wheel, tongue jack with caster wheel, cap, hub and tire and wheel.

Circle 717 on free information card

A pick-up truck can do double duty when it is equipped with Crysteel Mfg. Inc.'s new "LO-BOY" pick-up



truck hoist. Patterned after its heavy-duty predecessor, the unit nests within the frame without raising the bed or decreasing road clearance. With a three-ton capacity rating, the manufacturer claims it can lift as much as the truck is built to haul.

Circle 718 on free information card

A rotary tiller, the Krone RL100 lightweight 49-inch unit, has been introduced by KMN Farm Equipment Inc. The company recom-



mends its use for landscaping engineers, parks and orchards because of its small size and low horsepower requirement — 12 to 40 horsepower.

Circle 719 on free information card

Modular electronic irrigation sprinkler controller from Weathermatic Division of Telsco Industries offers 10, 20 or 30 station flexibility. Features include variable timing; alternate day, repeat cycle and calendar programming; dry indexing mode; non-removable trip pins; automatic, semi-automatic or manual operations.

Circle 720 on free information card

**W.I.N.** with **NITROFORM®** and save!

W.I.N. with Nitroform® nitrogen . . . and save! On time and labor.



Lakeshore bags it!



Turf and Horticultural Products  
Wilmington, Delaware 19899

STH76-13A

Circle 140 on free information card

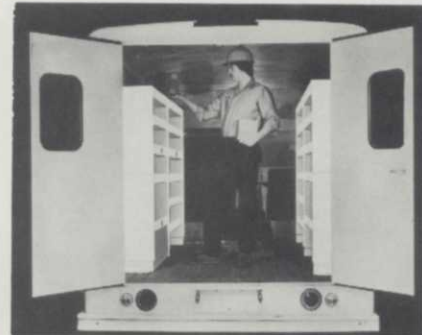
A sod harvester manufactured by Princeton Mfg. Co. is the subject of a new bulletin published by that company. The company's "Tow-Boy" is designed to harvest 16-inch wide sod where vegetative regrowth is required or where weight due to thickness of cut or sand conditions requires small pieces of handling, for the Model 4816. Model 4020 cuts 20-inch wide slabs 40 inches long.

Circle 721 on free information card

Lor-Al Corp. offers the concept of self-nursing in fertilizer application with development of the model 3200 SN Easy-Rider. The heavy-duty diesel applicator mounts a two-compartment, 16-ton dry body or a two-compartment, 3,000-gallon liquid body on a tandem chassis. Features of the self-nursing concept are high load capacity with compartmented bodies and high speeds over the road and in the field.

Circle 722 on free information card

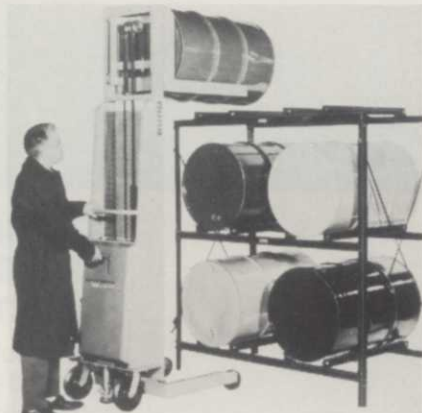
Modular shelves for mobile storeroom vans have been introduced by Knaack Mfg. Co. The shelves are constructed from 18 ga. steel, welded throughout with one-piece



steel back riveted in place for maximum rigidity and convenience. Bin dividers are optional and all shelves install singly or stack.

Circle 723 on free information card

Drum lifters from Weil Service Products Corp. handle drums in any work area with moderate to large drum-handling requirements. The



units can be used for many other materials-handling jobs by simply slipping a low-cost accessory plate over the lift arms.

Circle 724 on free information card

An eight-horsepower front engine riding mower is being manufactured by Allis-Chalmers Corp., Lawn and Garden Equipment Div. The 608 LT has three speeds forward and one reverse with an all-gear, belt-driven transmission. A Briggs and Stratton engine with 12-volt electric starter will be standard. Mower attachments hook to the front axle enabling the deck to follow the contour of the ground and provide non-scalp mowing, the company said.

Circle 725 on free information card



# THE GREEN MACHINE

This is the machine that revolutionized the turf industry . . . the machine that seeds or sprigs, fertilizes, waters, sprays, and mulches in one easy operation . . . the BOWIE HYDRO-MULCHER.

Its performance and reliability are unequalled. Its capabilities have created a whole new industry of lawn and turf, ground cover and erosion specialists. The BOWIE HYDRO-MULCHER is the daddy of them all . . . the green machine!

## EXCLUSIVE BOWIE HYDRO-MULCHER FEATURES:

- Only proven unit for both sprigging and seeding with cellulose fiber mulches.
- Can mulch, fertilize and seed or sprig half an acre in eight minutes.

- Has enclosed shredder bar for shredding full bales of cellulose fibers.
- Has centralized tower control with no hoses.
- Has triple agitators for faster mixing and eliminating sediment build-up.
- Uses pump only for spraying, so pump lasts longer.
- Has spray mist and other accessory nozzles for such uses as insect control, tree spraying and fire fighting.
- Six models — from 350 to 3,000 gallon capacity.

CALL OR WRITE FOR COMPLETE DETAILS:



BOWIE INDUSTRIES, INC.  
P.O. BOX 931, BOWIE, TEXAS 76230  
(817) 872-2286

Circle 155 on free information card