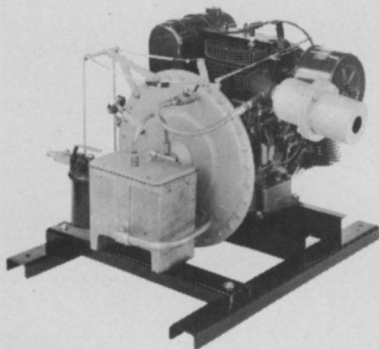


New Products



ALGAE CONTROL: A new approach to algae control is now available from Great Lakes Biochemical Co., Inc. Slow Release Algimycin PLL-C, a pelleted copper-based formulation, is said to save time and labor and require no mixing, special equipment or trailing bags. Application can be made with a hand scoop. PLL-C pellets will stay in place on the bottom and slowly release the algae control chemicals while water currents create natural distribution. Even when water is drawn for irrigation, pellets will remain active in treating the pond and lake water as well as water which may be added. Pellets are available in 50 lb. bags and are broadcast at a rate of 10 to 20 lbs. per acre-foot of water. This product has been registered by the EPA and various state authorities. The use of PLL-C pellets is said to take about 25 percent of the time required by the conventional methods and is particularly effective in the control of hard-to-get-at Chara and Nitella as well as most other algae.

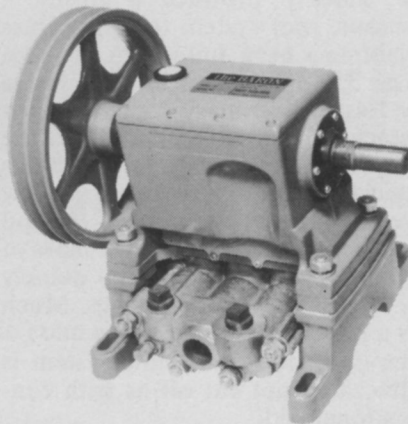
Circle 701 on free information card.



FOGGER: London Fog Co. now manufactures heavy-duty truck-mounted foggers for fogging recreational areas, industrial property and other large areas. The foggers all have piston engine powered turbo fog system. This two-stage fog-producing system produces low temperature fog by mechanical, viscous friction-induced heat from a turbo rotor mounted directly on the engine crankcase. Second stage is produced by brief exposure to engine's hot air blast. Model 500 features 16 hp Kohler four-cycle in-

dustrial type engine with self-starter, alternator and simplified remote control. Model 100 has same features, but doubled fog output with 37 hp Wisconsin engine. Model 250 is a lighter-weight unit powered by a 12 hp manual start Kohler engine.

Circle 702 on free information card.



PUMP: Model 50 high-pressure Baron pump from Britt-Tech Corp. has a capacity range from seven gpm at 800 psi to nine gpm at 700 psi. Dimensions of Model 50 are 7 $\frac{3}{4}$ in. long x 12 $\frac{1}{4}$ in. wide x 10 $\frac{7}{8}$ in. high; weight, 63 pounds. Model 50 has all the standard Baron features including corrosive-resistant components with stainless steel plungers and V-type seals that are acid and solvent resistant. Design features include the near absence of pulsations, an extremely low sound level and easy seal replacement. The pump is designed to keep pumped liquid out of oil bath crankcase.

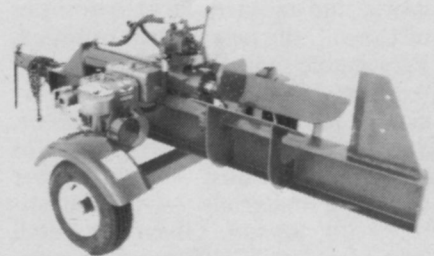
Circle 703 on free information card.



MOWER: Excel Industries has introduced Hustler Model 272A, a 72-inch mower with 20 hp engine, dual path in-

line hydro transmission and adjustable suspension seat. New model retains independent control to each wheel but eliminates transfer gear case. Power is transmitted direct to high torque hydraulic drive motors at the wheels. By reversing one wheel while moving the other forward, operator can reportedly turn machine around in its own length and trim in tight places. According to manufacturer, one man with a Hustler can replace several persons operating smaller units. Hustler is also said to conserve energy in open areas by replacing larger, more expensive tractors. Operator safety features include: a positive interlock ignition, parking brake, electric clutch and highway safety yellow paint. New 20 hp Kohler engine is protected by a heavy-duty, two-stage air cleaner, oil filter and hour meter. Available attachments include: rotary snow blower, broom, cab with heater, dozer blade and 60-inch flail cutter.

Circle 704 on free information card.



WOODSPLITTER: Hy-Draulic Products has designed several new log splitters, including the MS-400 Mini-Splitter. Features of the splitter include: eight horsepower air-cooled engine; heavy-duty ram cylinder; a splitting cycle of 12 seconds; rugged tubular steel frame; a seven-gallon hydraulic oil reservoir; and a splitting length of up to 20 inches.

Circle 705 on free information card.

HYDRO-WET: After four years of field testing, Kalo Laboratories is introducing a new soil and turf wetting agent, Hydro-Wet, designed to aid water penetration in compacted hydrophobic or sloping soils. Hydro-Wet is said to release compaction layers allowing turf to better absorb water and to reduce erosion on slopes because it makes slopes wettable thus keeping water where it is needed, instead of having it flow into low areas. Hydro-Wet is designed to be used in combination with liquid fertilizers and pesticides. Hydro-Wet will reportedly help get these compounds directly to the roots where they are needed. The product is available in one and five gallon metal containers.

Circle 706 on free information card.